

Teaching Pendant **TB-01**



XSEL

SSEL

ASEL

PSEL

TTA

PCON-CA

ACON

SCON-CA

MSEP

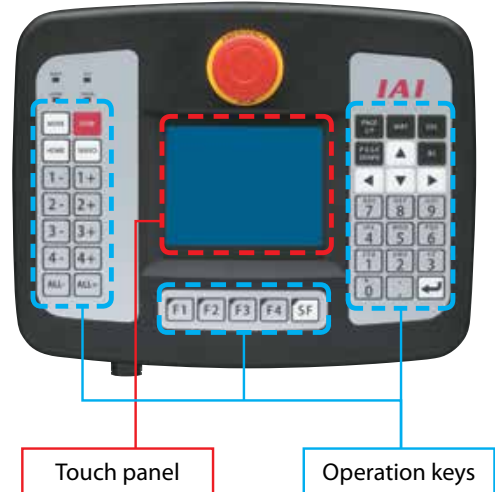
MSCON

All Your Controllers Can Be Operated with One Unit

* Excluding some old controllers.

Features

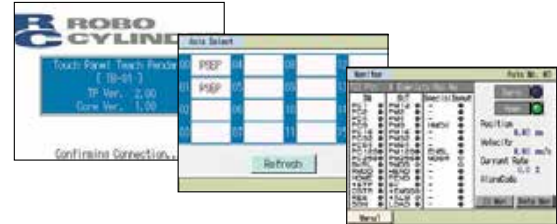
- Supporting both programmable controllers and position controllers
- Easy-to-use design combining a touch panel and keys
- 3.5" full-color touch panel
- SEL programs can be edited
- Programs/data can be saved to SD cards
- Calendar function



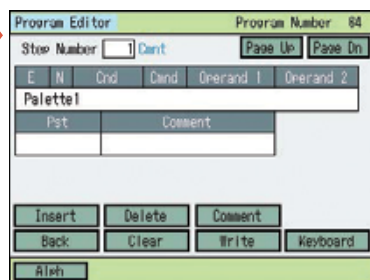
Operation Screens



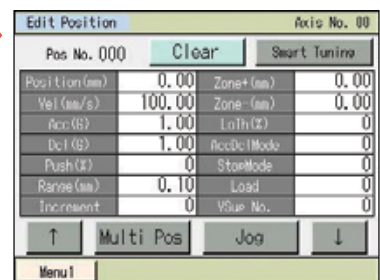
Operation Screens



Programmable data



Position data



Types

The TB-01 supports all of the following controllers, but you need to select an appropriate cable for each controller.

● Teaching Pendant + Cable (Teaching Pendant Only: TB-01-N-ENG)

| Model number | Teaching pendant kit model numbers | | Supported controllers |
|--------------|------------------------------------|--|--|
| TB-01-SC-ENG | TB-01-N-ENG + | ① CB-TB1-C050 | Position controller: PCON-CA, ACON, SCON-CA, PSEP, ASEP, DSEP, MSEP, MSCON |
| | | ② CB-TB1-X050-JS : CB-TB1-X050 + CB-SEL-SJS002 | Programmable controller: PSEL, ASEL, SSEL, XSEL-K/P/Q/R/S, TT, TTA |
| TB-01-C-ENG | TB-01-N-ENG + ① | CB-TB1-C050 | Position controller: PCON-CA, ACON, SCON-CA, PSEP, ASEP, DSEP, MSEP, MSCON |
| TB-01-S-ENG | TB-01-N-ENG + ③ | CB-TB1-X050 | Programmable controller: XSEL-K/P/Q/R/S, TT, TTA |
| TB-01-SJ-ENG | TB-01-N-ENG + ② | CB-TB1-X050-JS : CB-TB1-X050 + CB-SEL-SJS002 | Programmable controller: PSEL, ASEL, SSEL, XSEL-K/P/Q/R/S, TT, TTA |

● Teaching Pendant Only (No Cable)

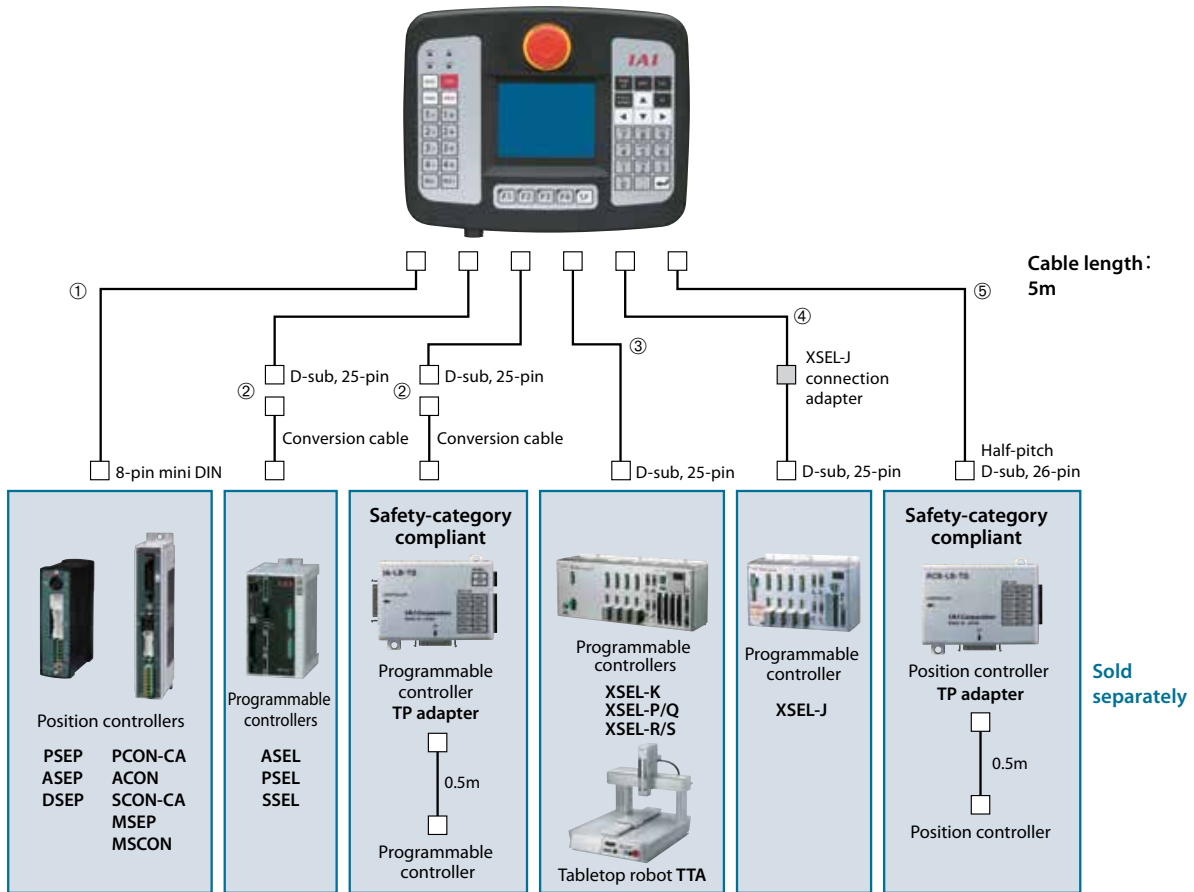
| Model number | Description |
|---------------|---|
| TB-01-N-ENG | Standard specification |
| TB-01D-N-ENG | Deadman switch, left-side mount specification (standard) [for Safety-category compliant system] |
| TB-01DR-N-ENG | Deadman switch, right-side mount specification [for Safety-category compliant system] |

● Cable Only

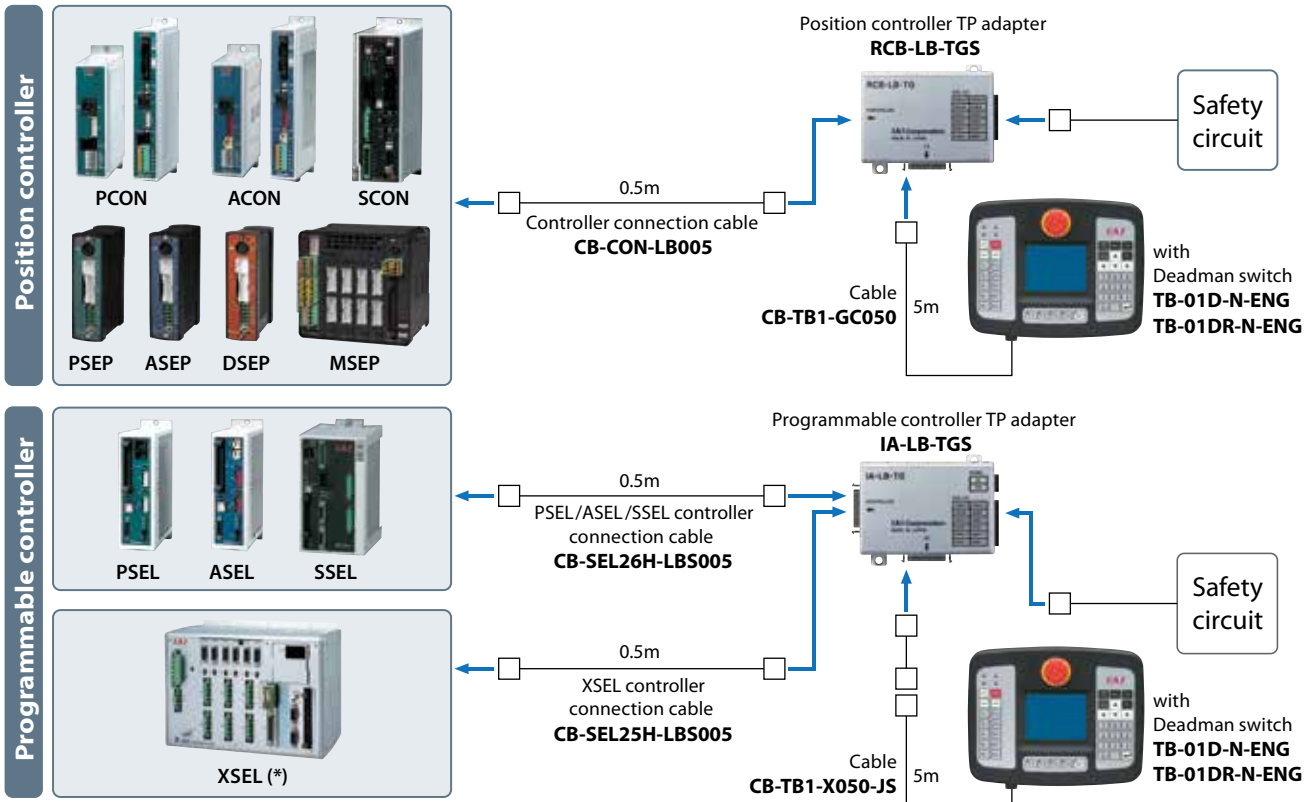
| Model number | Description | Supported controllers |
|----------------|---|---|
| CB-TB1-C050 | ① Position controller cable | Position controller |
| CB-TB1-X050-JS | ② Programmable controller cable + conversion cable | PSEL, ASEL, SSEL, XSEL-K/P/Q/R/S, TT, TTA |
| | Programmable controller TP adapter cable [Safety-category compliant] | |
| CB-TB1-X050 | ③ Programmable controller cable | XSEL-K/P/Q/R/S, TT, TTA |
| CB-TB1-XJ050 | ④ Programmable controller cable | XSEL-J |
| CB-TB1-GC050 | ⑤ Cable between teaching pendant and TP adapter [Safety-category compliant] | Position controller |

(Note) The cable in ② consists of the cable in ③ and a conversion cable (CB-SEL-SJS002).

* The cable in ② can be used with any controller for which the cable in ③ is specified.



Safety-category Compliant

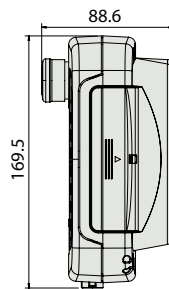
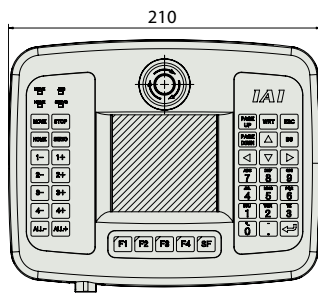


(*1) The XSEL-J/K cannot be made Safety-category compliant even when the TP adapter is used.

Specifications

| | |
|-------------------------------|--|
| Rated voltage | 24V DC |
| Operating voltage range | 21.6 to 26.4V DC |
| Power consumption | 3.6 W or less (150 mA or less) |
| Ambient operating temperature | 0 to 50°C |
| Ambient operating humidity | 20 to 85% RH (non-condensing) |
| Ambient storage temperature | -20 to 60°C |
| Ambient storage humidity | 10 to 85% RH (non-condensing) |
| Product life | 5 years (if operated 24 hours a day at ambient temperature of 40°C; excluding the battery and LCD) |
| LCD life | 20,000 hours (at ambient temperature of 25°C) |
| Vibration durability | 10 to 55 Hz (1 minute periods), double amplitude 0.75 mm, 10 minutes each in X/Y/Z directions |
| Impact durability | 147 m/s ² , 11 msec, 4 times each in X/Y/Z directions |
| Environmental resistance | IP40 (in initial state) |
| Weight | 507g (TB-01-N; teaching pendant only) |

External Dimensions



(Unit: mm)

Option

- Strap: Model number **STR-1**

