

RCS2-RT7R

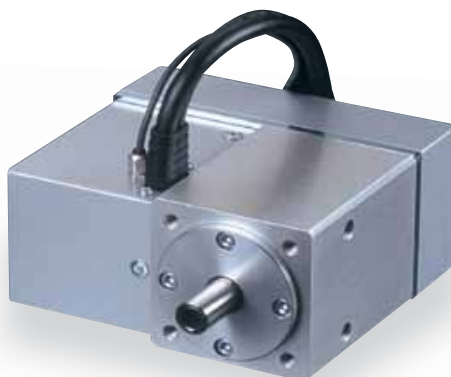
ROBO Cylinder Rotary Side-Mounted Motor (Hollow Motor Shaft) 68mm Width
200V Servo Motor

■ Configuration: **RCS2** — **RT7R** — **I** — **60** — **4** — **300** — — — **L**

Series — Type — Encoder — Motor — Deceleration Ratio — Oscillation Angle — Compatible Controllers — Cable Length — Option

I: Incremental 60 : 60W Servo Motor 4: 1/4 300: 300degrees T1: XSEL-J/K N : None L : Limit switch (equipped as standard)
 T2: SCON P : 4m S : 3m M : 5m X : Custom R : Robot cable
 SSEL XSEL-P/Q

* See page Pre-35 for an explanation of the naming convention.



Technical References P. A-5

POINT Notes on Selection

(1) The thrust load is the mechanical strength of the output axis at rest. When selecting, take into account the load moment and the load inertia.
 (2) The rated acceleration while moving is 0.3G.

Actuator Specifications

Lead and Load Capacity

Model	Motor Output (W)	Deceleration Ratio	Rated torque (N·m)	Allowable Moment of Inertia (kg·m ²)	Oscillation Angle (deg)
RCS2-RT7R-I-60-4-300-①-②-L	60	1/4	0.764	1.25×10 ⁻³ or less	300

Legend: ① Compatible controller ② Cable length

Stroke and Maximum Speed

Deceleration Ratio	Oscillation Angle	300 (deg)
	(deg)	
1/4	500	

(Unit: degrees/s)

Stroke List

Oscillation Angle (deg)	Standard Price
300	-

② Cable List

Type	Cable Symbol	Standard Price
Standard Type	P (1m)	-
	S (3m)	-
	M (5m)	-
Special Lengths	X06 (6m) ~ X10 (10m)	-
	X11 (11m) ~ X15 (15m)	-
	X16 (16m) ~ X20 (20m)	-
Robot Cable	R01 (1m) ~ R03 (3m)	-
	R04 (4m) ~ R05 (5m)	-
	R06 (6m) ~ R10 (10m)	-
	R11 (11m) ~ R15 (15m)	-
	R16 (16m) ~ R20 (20m)	-

* See page A-39 for cables for maintenance.

Actuator Specifications

Item	Description
Drive System	Timing Belt
Positioning Repeatability	±0.1 degrees
Lost Motion	0.5 degrees or less
Base	Material: Aluminum (white alumite treated)
Allowable Load Moment	8.9N·m or less
Thrust load	100N or less
Ambient Operating Temp./Humidity	0 ~ 40°C, 85% RH or less (non-condensing)

369

RCS2-RT7R

- Slider Type
- Mini
- Standard
- Controllers Integrated
- Rod Type
- Mini
- Standard
- Controllers Integrated
- Table/Arm/Flat Type
- Mini
- Standard
- Gripper/ Rotary Type
- Linear Servo Type
- Cleanroom Type
- Splash-Proof
- Controllers
- PMEC /AMEC
- PSEP /ASEP
- ROBO NET
- ERC2
- PCON
- ACON
- SCON
- PSEL
- ASEL
- SSEL
- XSEL
- Pulse Motor
- Servo Motor (24V)
- Servo Motor (200V)
- Linear Servo Motor

