

RCS2-RT6R

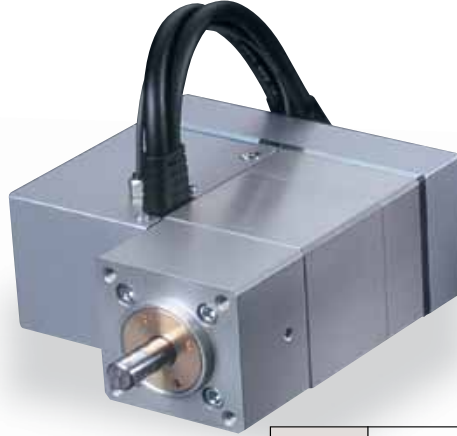
ROBO Cylinder Rotary Side-Mounted Motor 64mm Width 200V Servo Motor

■ Configuration: **RCS2** - **RT6R** - **I** - **60** - **18** - **300** - - - **L**

Series - Type - Encoder - Motor - Deceleration Ratio - Oscillation Angle - Compatible Controllers - Cable Length - Option

I: Incremental 60: 60W Servo Motor 18: 1/18 300: 300degrees T1:XSEL-J/K N: None L: Limit switch (equipped as standard)
 T2:SCON P: 1m S: 3m
 SSEL M: 5m
 XSEL-P/Q X : Custom R : Robot cable

* See page Pre-35 for an explanation of the naming convention.



Technical References P. A-5



- (1) The thrust load is the mechanical strength of the output axis at rest. When selecting, take into account the load moment and the load inertia.
- (2) The rated acceleration while moving is 0.3G.

Actuator Specifications

Lead and Load Capacity

Model	Motor Output (W)	Deceleration Ratio	Rated torque (N·m)	Allowable Moment of Inertia (kg·m ²)	Oscillation Angle (deg)
RCS2-RT6R-I-60-18-300-①-②-L	60	1/18	2.4	2.5×10 ⁻² or less	300

Legend: ① Compatible controller ② Cable length

Stroke and Maximum Speed

Deceleration Ratio	Oscillation Angle	300 (deg)
	300 (deg)	
1/18	500	

(Unit: degrees/s)

Stroke List

Oscillation Angle (deg)	Standard Price
300	-

② Cable List

Type	Cable Symbol	Standard Price
Standard Type	P (1m)	-
	S (3m)	-
	M (5m)	-
Special Lengths	X06 (6m) ~ X10 (10m)	-
	X11 (11m) ~ X15 (15m)	-
	X16 (16m) ~ X20 (20m)	-
	R01 (1m) ~ R03 (3m)	-
Robot Cable	R04 (4m) ~ R05 (5m)	-
	R06 (6m) ~ R10 (10m)	-
	R11 (11m) ~ R15 (15m)	-
	R16 (16m) ~ R20 (20m)	-

* See page A-39 for cables for maintenance.

Actuator Specifications

Item	Description
Drive System	Ball speed reducer + timing belt
Positioning Repeatability	±0.02 degrees
Lost Motion	0.1 degrees or less
Base	Material: Aluminum (white alumite treated)
Allowable Load Moment	6.8N·m or less
Thrust load	100N or less
Ambient Operating Temp./Humidity	0 ~ 40°C, 85% RH or less (non-condensing)

367

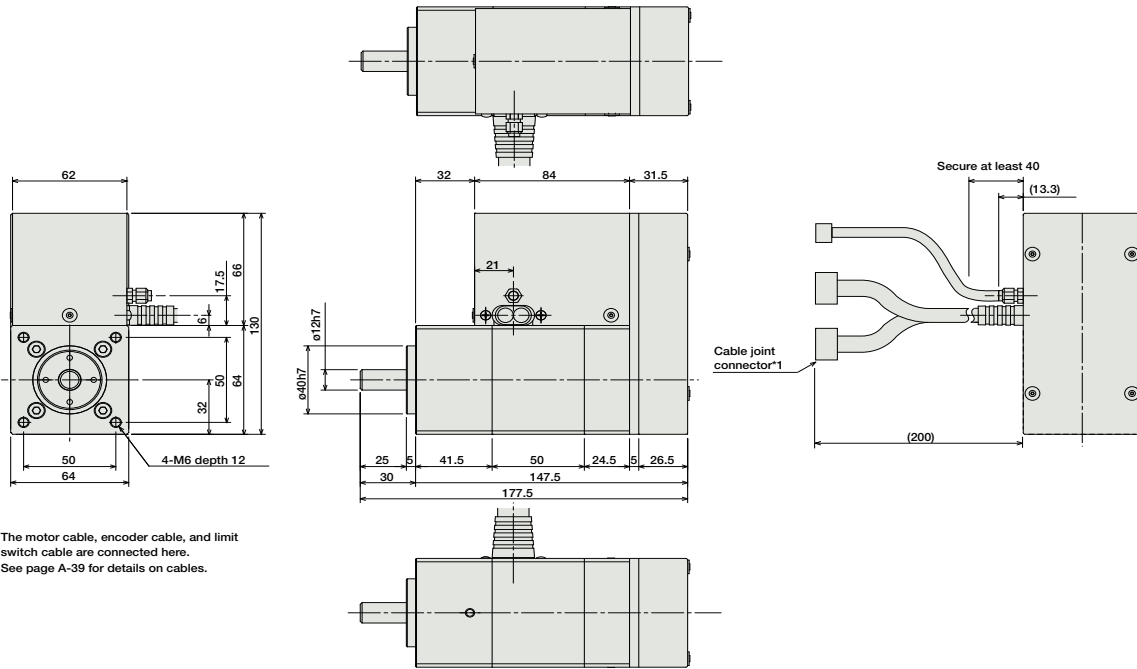
RCS2-RT6R

- Slider Type
- Mini
- Standard
- Controllers Integrated
- Rod Type
- Mini
- Standard
- Controllers Integrated
- Table/Arm/Flat Type
- Mini
- Standard
- Gripper/ Rotary Type
- Linear Servo Type
- Cleanroom Type
- Splash-Proof
- Controllers
- PMEC /AMEC
- PSEP /ASEP
- ROBO NET
- ERC2
- PCON
- ACON
- SCON
- PSEL
- ASEL
- SSEL
- XSEL
- Pulse Motor
- Servo Motor (24V)
- Servo Motor (200V)
- Linear Servo Motor

Dimensions

For Special Orders P. A-9

* For more information on homing, see page A-79.



*1 The motor cable, encoder cable, and limit switch cable are connected here. See page A-39 for details on cables.

Weight (kg) 2.8

① Compatible Controllers

The RCS2 series actuators can operate with the controllers below. Select the controller according to your usage.

Name	External View	Model	Description	Max. Positioning Points	Input Voltage	Power Supply Capacity	Standard Price	See Page
Positioner Mode		SCON-C-60-NP-2-①	Positioning is possible for up to 512 points	512 points	Single-phase AC100V Single-phase AC200V Three-phase AC200V (XSEL-P/Q only)	360VA max. * When operating a 150W single-axis model	-	→ P547
Solenoid Valve Mode			Operable with the same controls as the solenoid valve	7 points				
Serial Communication Type			Dedicated to serial communication	64 points				
Pulse Train Input Control Type			Dedicated to pulse train input	(-)				
Program Control 1-2 Axes Type		SSEL-C-1-60-NP-2-①	Programmed operation is possible Operation is possible on up to 2 axes	20000 points			-	→ P577
Program Control 1-6 Axes Type		XSEL-2-1-60-N1-EEE-2-③	Programmed operation is possible Operation is possible on up to 6 axes	20000 points			-	→ P587

* For SSEL and XSEL, only applicable to the single-axis model.
 * ① is a placeholder for the power supply voltage (1: 100V, or 2: single-phase 200V).
 * ② is a placeholder for the type name of XSEL ("J", "K", "P", "Q").
 * ③ is a placeholder for the type of power supply voltage (1: 100V, 2: single-phase 200V, or 3: 3-phase 200V).

- Slider Type
- Mini
- Standard
- Controllers Integrated
- Rod Type
- Mini
- Standard
- Controllers Integrated
- Table/Arm /Flat Type
- Mini
- Standard
- Gripper/ Rotary Type
- Linear Servo Type
- Cleanroom Type
- Splash-Proof
- Controllers
- PMEC /AMEC
- PSEP /ASEP
- ROBO NET
- ERC2
- PCON
- ACON
- SCON
- PSEL
- ASEL
- SSEL
- XSEL
- Pulse Motor
- Servo Motor (24V)
- Servo Motor (200V)
- Linear Servo Motor