

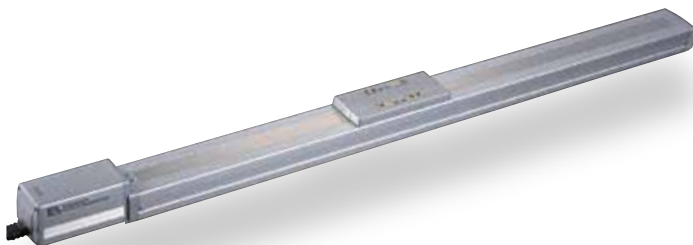
RCP2-SS7C ROBO Cylinder Slider Type 60mm Width Pulse Motor Straight Type Coupled

■ Configuration: **RCP2** — **SS7C** — **I** — **42P** — — — — —

Series — Type — Encoder — Motor — Lead — Stroke — Compatible Controllers — Cable Length — Option

I: Incremental 42P: Pulse motor 12: 12mm 50: 50mm P1: PCON N: None B: Brake
 * The Simple absolute encoder models are labeled as "I". 42 □ size 6: 6mm 600: 600mm (50mm pitch increments) RPCON P: 1m NM: Reversed-home
 PSEL S: 3m SR: Slider Roller
 P3: PMEC M: 5m X □ □: Custom Length
 PSEP R □ □: Robot cable

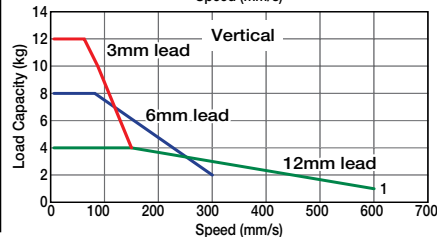
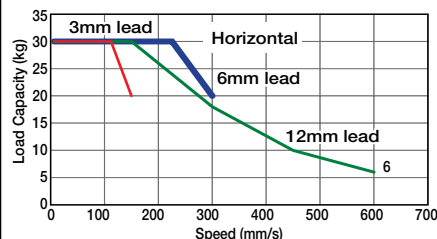
* See page Pre-35 for explanation of each code that makes up the configuration name.



Technical References A-5

- POINT** Notes on Selection
- (1) When the stroke increases, the maximum speed will drop to prevent the ball screw from reaching the critical rotational speed. Use the actuator specification table below to check the maximum speed at the stroke you desire.
 - (2) Since the RCP2 series use a pulse motor, the load capacity decreases at high speeds. Check in the Speed vs. Load Capacity graph to see if your desired speed and load capacity are supported.
 - (3) The load capacity is based on operation at an acceleration of 0.3G (0.2G for the 3mm-lead model, or when used vertically). These values are the upper limits for the acceleration.

■ Speed vs. Load Capacity
 Due to the characteristics of the pulse motor, the RCP2 series' load capacity decreases at high speeds. In the table below, check if your desired speed and load capacity are supported.



Actuator Specifications				
■ Lead and Load Capacity (Note 1) Please note that the maximum load capacity decreases as the speed increases.				
Model	Lead (mm)	Max. Load Capacity (Note 1)		Stroke (mm)
		Horizontal (kg)	Vertical (kg)	
RCP2-SS7C-I-42P-12-①-②-③-④	12	~ 30	~ 4	50 ~ 600 (50mm increments)
RCP2-SS7C-I-42P-6-①-②-③-④	6	~ 30	~ 8	
RCP2-SS7C-I-42P-3-①-②-③-④	3	~ 30	~ 12	

Legend ① Stroke ② Compatible controller ③ Cable length ④ Options

■ Stroke and Maximum Speed		
Stroke / Lead	50 ~ 500 (50mm increments)	
	50 ~ 500 (50mm increments)	~ 600 (mm)
12	600	470
6	300	230
3	150	115

(Unit: mm/s)

① Stroke List

Stroke (mm)	Standard Price
50/100	-
150/200	-
250/300	-
350/400	-
450/500	-
550/600	-

③ Cable List

Type	Cable Symbol	Standard Price
Standard	P (1m)	-
	S (3m)	-
	M (5m)	-
Special Lengths	X06 (6m) ~ X10 (10m)	-
	X11 (11m) ~ X15 (15m)	-
	X16 (16m) ~ X20 (20m)	-
	R01 (1m) ~ R03 (3m)	-
Robot Cable	R04 (4m) ~ R05 (5m)	-
	R06 (6m) ~ R10 (10m)	-
	R11 (11m) ~ R15 (15m)	-
	R16 (16m) ~ R20 (20m)	-

* See page A-39 for cables for maintenance.

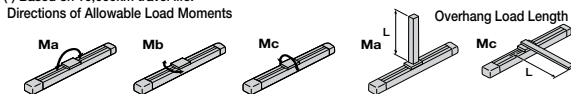
④ Option List

Name	Option Code	See Page	Standard Price
Brake	B	→ A-25	-
Reversed-home	NM	→ A-33	-
Slider Roller	SR	→ A-36	-

Actuator Specifications

Item	Description
Drive System	Ball screw Ø10mm C10 grade
Positioning Repeatability	±0.02mm
Lost Motion	0.1mm or less
Base	Material: Special alloy steel
Allowable Static Moment	Ma: 79.4 N·m Mb: 79.4 N·m Mc: 172.9 N·m
Allowable Dynamic Moment (*)	Ma: 14.7 N·m Mb: 14.7 N·m Mc: 33.3 N·m
Overhang Load Length	Ma direction: 300mm or less; Mb-Mc direction: 300mm or less
Ambient Operating Temp./Humidity	0 ~ 40°C, 85% RH or less (Non-condensing)

(*) Based on 10,000km travel life.



33 RCP2-SS7C

