

RCP2W-GRLS

ROBO Cylinder 2-Finger Gripper Mini Lever Type 42mm Width Pulse Motor

■ Configuration: **RCP2W** — **GRLS** — **I** — **20P** — **30** — **180** — — —

Series — Type — Encoder — Motor — Lead — Stroke — Compatible Controllers — Cable Length — Option

I: Incremental Type
 * The simple absolute encoder is also considered type "I".

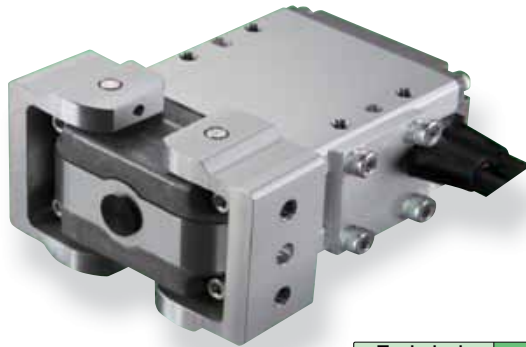
20P: Pulse motor 20 □ size
 30: Deceleration ratio 1/30
 180: 180 Degree (One side 90 degrees)

P1: PCON
 RPCON
 PSEL
 P3: PMEC
 PSEP

N: None
 P: 1m
 S: 3m
 M: 5m
 X □ □: Custom Length

NM: Reversed-home
 FB: Flange Bracket
 SB: Shaft Bracket

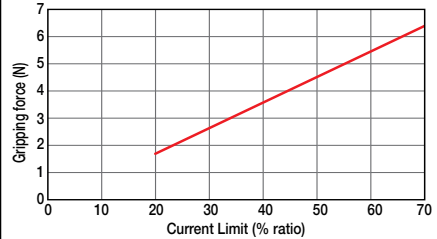
* See page Pre-35 for explanation of each code that makes up the configuration name.



Technical References P. A-5

■ **Grip Force Arrangement**
 Through push operation the grip force (push force) can be arranged freely within the range of 20%~70% of current limit value of the controller.

* Grip force noted in the figure below is the sum of the grip force of two fingers.



- POINT**
 Notes on Selection
- (1) The max. open/close speed represents one side operating speed.
 - (2) The max. grip force will be the sum of the two fingers grip force when the distance for grip point and over hang is 0. The actual work part weight which can be transported depends on the friction constant between finger and work part material, and the form; typically it is 1/10 ~ 1/20 or less than gripping force. (See page A-77 for details.)
 - (3) The rated acceleration at transportation is 0.3G.
 - (4) Please note that the product has no splash-proof function.

* Please note when gripping (pushing) is performed the speed will be fixed at 5 degrees/sec.

Actuator Specifications				Stroke and Maximum Open/Close Speed	
■ Lead and Load Capacity				■ Stroke and Maximum Open/Close Speed	
Model	Deceleration ratio	Max. Grip Force (N)	Stroke (degrees)	Stroke (degrees) Deceleration ratio	180 (degrees)
RCP2W-GRLS-I-20P-30-180-①-②-③	30	6.4	180 (One side 90)	30	600
Legend ① Compatible controller ② Cable length ③ Options				(Unit: degrees/s)	

① Stroke List

Stroke (degrees)	Standard Price
180	-

② Cable List

Type	Cable Symbol	Standard Price
Standard (Robot Cables)	P (1m)	-
	S (3m)	-
	M (5m)	-
Special Lengths	X06 (6m) ~ X10 (10m)	-
	X11 (11m) ~ X15 (15m)	-
	X16 (16m) ~ X20 (20m)	-
		-

* The standard cable is the motor-encoder integrated robot cable.
 * See page A-39 for cables for maintenance.

③ Option List

Name	Option Code	See Page	Standard Price
Reversed-home	NM	A-33	-
Flange Bracket	FB	26	-
Shaft Bracket	SB	36	-

Actuator Specifications

Item	Description
Drive System	Worm gear + Helical gear
Positioning Repeatability	±0.01mm
Backlash	1 degree or less for one side (stressed by spring on the side which is opened always)
Lost Motion	0.1 mm or less one side
Guide	-
Statically Allowable Load Moment	-
Weight	0.2kg
Ambient Operating Temp./Humidity	0~40°C, 85%RH or less (Non-condensing)

453

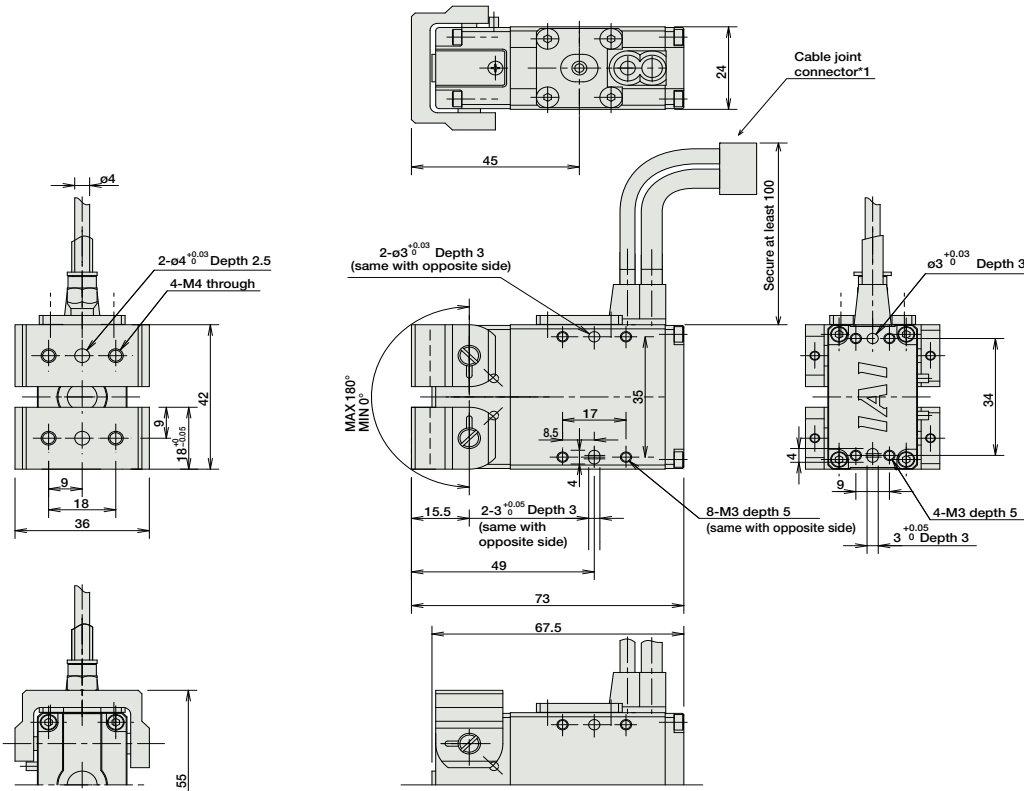
RCP2W-GRLS

- Slider Type
- Mini
- Standard
- Controllers Integrated
- Rod Type
- Mini
- Standard
- Controllers Integrated
- Table/Arm /Flat Type
- Mini
- Standard
- Gripper/ Rotary Type
- Linear Servo Type
- Cleanroom Type
- Splash-Proof
- Controllers
- PMEC /AMEC
- PSEP /ASEP
- ROBO NET
- ERC2
- PCON
- ACON
- SCON
- PSEL
- ASEL
- SSEL
- XSEL
- Pulse Motor
- Servo Motor (24V)
- Servo Motor (200V)
- Linear Servo Motor

Dimensions

For Special Order P. A-9

- * Open side of slider will be home position.
- *1 A motor-encoder cable is connected here. See page A-39 for details on cables.



Weight (kg) 0.2

① Compatible Controllers

The RCP2W series actuators can operate with the controllers below. Select the controller according to your usage.

Name	External View	Model	Description	Max. Positioning Points	Input Voltage	Power Supply Capacity	Standard Price	See Page
Solenoid Valve Type		PMEC-C-20PI-NP-2-①	Easy-to-use controller, even for beginners.	3 points	AC100V AC200V	See P481	-	→ P477
		PSEP-C-20PI-NP-2-0	Operable with same signal as solenoid valve. Supports both single and double solenoid types. No homing necessary with simple absolute type.				-	→ P487
Splash-Proof Solenoid Valve Type		PSEP-CW-20PI-NP-2-0					-	
Positioner Type		PCON-C-20PI-NP-2-0	Positioning possible for up to 512 points	512 points	DC24V	2A max.	-	
Safety Category Compliant Positioner Type		PCON-CG-20PI-NP-2-0					-	
Pulse Train Input Type (Differential Line Driver)		PCON-PL-20PI-NP-2-0	Differential line driver support Pulse Train Input Type	(-)	DC24V	2A max.	-	→ P525
Pulse Train Input Type (Open Collector)		PCON-PO-20PI-NP-2-0	Open Collector Pulse Train Input Type				-	
Serial Communication Type		PCON-SE-20PI-N-0-0	Dedicated to serial communication	64 points			-	
Field Network Type		RPCON-20P	Dedicated to field network	768 points			-	→ P503
Program Control Type		PSEL-C-1-20PI-NP-2-0	Programmed operation is possible Can operate up to 2 axes	1500 points			-	→ P557

* This is for the single-axis PSEL.
* ① is a placeholder for the power supply voltage (1:100V / 2:100~240V).

IAI

RCP2W-GRLS

454

Sold & Serviced By:

Toll Free Phone (877) SERV098
Toll Free Fax (877) SERV099
www.electromate.com
sales@electromate.com

- Slider Type
- Mini
- Standard
- Controllers Integrated
- Rod Type
- Mini
- Standard
- Controllers Integrated
- Table/Arm /Flat Type
- Mini
- Standard
- Gripper/ Rotary Type
- Linear Servo Type
- Cleanroom Type
- Splash-Proof
- Controllers
- PMEC /AMEC
- PSEP /ASEP
- ROBO NET
- ERC2
- PCON
- ACON
- SCON
- PSEL
- ASEL
- SSEL
- XSEL
- Pulse Motor
- Servo Motor (24V)
- Servo Motor (200V)
- Linear Servo Motor