

# IAI

Quality and Innovation

SPLASH-PROOF SINGLE-AXIS ROBOT

# ISWA/ISPWA



Sold & Serviced By:

 **ELECTROMATE**

Toll Free Phone (877) SERV098

Toll Free Fax (877) SERV099

[www.electromate.com](http://www.electromate.com)

[sales@electromate.com](mailto:sales@electromate.com)

**First in the industry!**  
**The lineup of splash-proof sliders has been extended.**  
**You can now choose a splash-proof actuator of desired size to match your specific application.**

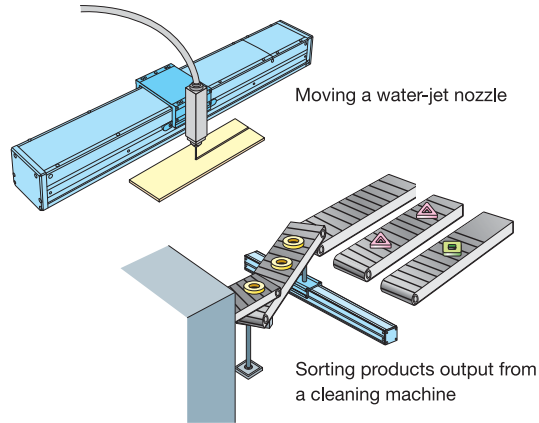


**Features**

- The new slider structure keeps water out of the internal parts. When air purge is performed, the robot conforms to IP65. (Note 1)  
 The high-speed robot achieves a maximum speed of 1,000 mm/sec. (Note 2)
- The maximum load capacity is 70 kg, so heavy loads can be transferred effortlessly. (Note 3)
- The high-precision specification (ISPWA) with a C5-equivalent precision rolled screw boasts a positioning repeatability of  $\pm 0.01$  mm.  
 The standard specification (ISWA) also ensures high accuracy equivalent to  $\pm 0.02$  mm.
- Select from the three sizes of S (94 mm wide), M (125 mm wide) and L (155 mm wide).

(Note 1) The protection class is IP54 without air purge.  
 (Note 2) M type, 200 W/20-mm lead.  
 (Note 3) M type, 100 W/5-mm lead or 200 W/10-mm lead.  
 L type, 200W/10-mm lead or 400W/20-mm lead.

**Example of Use**



**Model**

Actuator Model

**ISWA - M - A - 200 - 20 - 500 - T1 - M - RT**

Series	Type	Encoder type	Motor Output	Lead	Stroke	Applicable controller	Cable length	Options
ISWA Standard specification ISPWA: High-precision specification	S: Actuator width 94 mm M: Actuator width 125 mm L: Actuator width 155 mm	A: Absolute I: Incremental	60:60W 100:100W 200:200W 400:400W	4:4mm 5:5mm 8:8mm 10:10mm 16:16mm 20:20mm	100~1200mm *Varies depending on the model.	T1: XSEL-J/K E-Con P-Driver T2: XSEL-P/Q	N: No cable S:3m M:5m X□□: Specify the desired length. * The standard cable is a robot cable.	RT: Guide with ball-retaining mechanism

\* The selectable leads vary depending on the model.

Controller Model See the back cover.

**Specification Table**

Slider type	Motor straight type	Stroke (mm) and maximum speed (mm/sec) (Note 1)																Load capacity (Note 2)		Motor (W)	Lead (mm)	Model	
																		Horizontal (kg)	Vertical (kg)				
		100	150	200	250	300	350	400	450	500	550	600	650	700	750	800	850	900	950				1000
Motor straight type	Motor straight type	800																7	-	60	16	IS(P)WA-S-60-16-□□□	
		400																20	-		8	IS(P)WA-S-60-8-□□□	
		200																45	-		4	IS(P)WA-S-60-4-□□□	
	Motor straight type	Motor straight type	500																30	-	100	10	IS(P)WA-M-100-10-□□□
			250																70	-		5	IS(P)WA-M-100-5-□□□
		Motor straight type	1000																30	-	200	20	IS(P)WA-M-200-20-□□□
			500																70	-		10	IS(P)WA-M-200-10-□□□
			1000																30	-		200	20
		500																70	-	10	IS(P)WA-L-200-10-□□□		
		1000																70	-	400	20	IS(P)WA-L-400-20-□□□	

(Note 1) The figure in each band indicates the maximum speed at the applicable stroke.  
 (Note 2) The load capacity is based on operation at an acceleration of 0.3 G.

**Notes on Use**

- ◎ The ISWA/ISPWA must always be used in a horizontal application in the specified orientation. Be sure to observe this requirement, since water will enter the housing if these robots are positioned on their side or used in a vertical application.
- ◎ The protection class of each splash-proof model indicates protection against entry of water. Please contact IAI if you require protection against oil and coolant.
- ◎ Be sure to implement air purge if the robot is used in a humid place (humidity of 85% or above). The purge air must be clean, dry air supplied from an air drier.

1

ISWA/ISPWA

Sold & Serviced By:  
**ELECTROMATE**

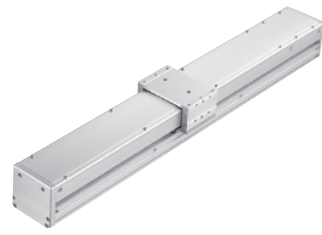
Toll Free Phone (877) SERV098  
 Toll Free Fax (877) SERV099  
[www.electromate.com](http://www.electromate.com)  
[sales@electromate.com](mailto:sales@electromate.com)

# ISWA-S

Single-Axis Robot, Compact Splash-Proof Type,  
Actuator Width 94 mm, 60 W, Straight Shape

# ISPWA-S

Single-Axis Robot, Compact Splash-Proof Type,  
Actuator Width 94 mm, 60 W, Straight Shape **High-precision specification**



Type / Compact splash-proof    Stroke / 100-600mm    Load capacity / 45 kg (horizontal)

Model specification items    Series    Type    Encoder type    Motor output    Lead    Stroke    Controller    Cable length    Options

(Example) ISWA - S - A - 60 - 8 - 600 - T1 - S - RT

## Model/Specifications

Model	Encoder type	Motor output (W)	Lead (mm)	Stroke (in increments of 50-mm)	Speed (Note 1) (mm/s)	Load capacity (kg) (Note 2)		Rated thrust (N)
						Horizontal (kg)	Vertical (kg)	
ISWA [ISPWA]-S- <u>1</u> -60-16- <u>2</u> - <u>3</u> - <u>4</u> - <u>5</u>	A: Absolute	60	16	100-600	800	7	—	63.7
ISWA [ISPWA]-S- <u>1</u> -60-8- <u>2</u> - <u>3</u> - <u>4</u> - <u>5</u>	I: Incremental		8		400	20	—	127.4
ISWA [ISPWA]-S- <u>1</u> -60-4- <u>2</u> - <u>3</u> - <u>4</u> - <u>5</u>			4		200	45	—	254.8

\*1, \*2, \*3, \*4 and \*5 in the model numbers shown above respectively indicate the encoder type, stroke, applicable controller, cable length and applicable options.

## Options

Name	Type	Page	Remarks
Reverse Home Specification	NM	—	
Guide with ball-retaining mechanism	RT	—	

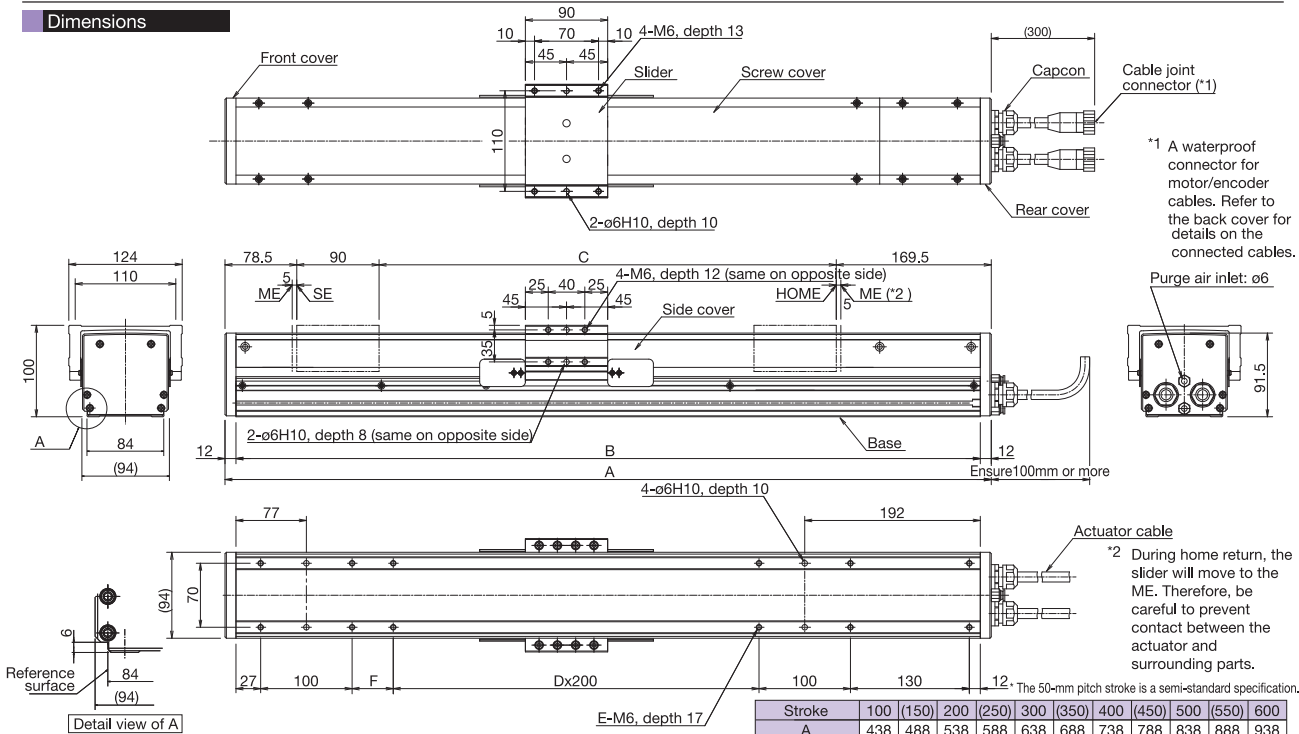
## Materials of Key Components

Name	Materials
Base, slider	Aluminum (A6063S-T5 or equivalent) with white alumite treatment
Side cover, screw cover	Aluminum (A6063S-T5 or equivalent) with white alumite treatment
Front cover, rear cover	A5052 with white alumite treatment
Actuator cable	PVC
Capcon	Nylon 66

## Common Specifications

Drive System (Note 3)	Ball screw, rolled C10 [rolled C5 or equivalent]
Positioning repeatability (Note 3)	±0.02mm [±0.01mm]
Backlash (Note 3)	0.05 mm or less [0.02 mm or less]
Guide	Integrated with the base
Allowable load moment	Ma: 14.2 N • m, Mb: 20.1 N • m, Mc: 32.9 N • m
Overhang load length	450 mm or less in Ma, Mb or Mc direction
Grease	Food grease (Medallion FM Grease No. 1)
Cable length (Note 4)	N: No cable, S: 3 m, M: 5 m, X□□: Specified length
Protection class (Note 5)	IP65
Operating temperature/humidity	0 ~ 40°C, 85%RH or below (non-condensing)

## Dimensions



Stroke	100	150	200	250	300	350	400	450	500	550	600
A	438	488	538	588	638	688	738	788	838	888	938
B	414	464	514	564	614	664	714	764	814	864	914
C	100	150	200	250	300	350	400	450	500	550	600
D	—	—	—	—	1	1	1	1	2	2	2
E	10	10	10	10	12	12	12	12	14	14	14
F	45	95	145	195	45	95	145	195	45	95	145
Weight (kg)	6.9	7.4	7.8	8.3	8.7	9.2	9.6	10.1	10.5	11.0	11.4

Maximum speed (mm/s)  
\* Varies depending on the stroke.

Lead: 16	800	760
Lead: 8	400	380
Lead: 4	200	190

## Applicable Controller Specifications

Applicable controller	Maximum number of controlled axes	Connectable encoder type	Operating method	Power-supply voltage
X-SEL - P/Q	6 axes	Absolute/incremental	Programming	3-Phase AC200V
XSEL - J/K	4 axes	Absolute/incremental	Programming	
SSEL	1 axis	Absolute/incremental	Programming	AC100V AC200V
SCON	1 axis	Absolute/incremental	Positioner/Pulse-train	



(Note 1) A longer stroke will result in a lower maximum speed to prevent the ball screw from reaching a dangerous speed. (Refer to the above table for the maximum speed at a given stroke.)  
(Note 2) Based on an acceleration of 0.3 G.  
(Note 3) The figures in square brackets apply to the ISPWA series.  
(Note 4) The maximum cable length is 30 m. Specify the desired length in meters (e.g., X08 = 8 m).  
(Note 5) IP65 applies when air purge is performed. Without air purge, the protection class is IP54. The ISWA/ISPWA must be installed horizontally. If the actuator is installed on its side or oriented vertically, water may enter the interior.

ISWA/ISPWA

2

Sold & Serviced By:

**ELECTROMATE**

Toll Free Phone (877) SERV098

Toll Free Fax (877) SERV099

www.electromate.com

sales@electromate.com

# ISWA-M-100 Single-Axis Robot, Medium Splash-Proof Type, Actuator Width 125 mm, 100 W, Straight Shape

# ISPWA-M-100 Single-Axis Robot, Medium Splash-Proof Type, Actuator Width 125 mm, 100 W, Straight Shape High-precision specification

Type Medium splash-proof Stroke 100~1000mm Load capacity 70 kg (horizontal)

Model specification items Series Type Encoder type Motor output Lead Stroke Controller Cable length Options

(Example) ISWA [ISPWA] - M - A - 100 - 10 - 1000 - T1 - S - RT



### Model/Specifications

Model	Encoder Type	Motor output (W)	Lead (mm)	Stroke (in increments of 50-mm)	Speed (Note 1) (mm/s)	Load capacity (kg) (Note 2)		Rated thrust (N)
						Horizontal (kg)	Vertical (kg)	
ISWA [ISPWA]-M- [1]-100-10 - [2]- [3]- [4]- [5]	A: Absolute	100	10	100~1000	500	30	—	169.5
ISWA [ISPWA]-M- [1]-100-5- [2]- [3]- [4]- [5]	I: Incremental		5		250	70	—	340.1

[1] [2] [3] [4] and [5] in the model numbers shown above respectively indicate the encoder type, stroke, applicable controller, cable length and applicable options.

### Options

Name	Type	Page	Remarks
Reverse Home Specification	NM	—	
Guide with ball-retaining mechanism	RT	—	

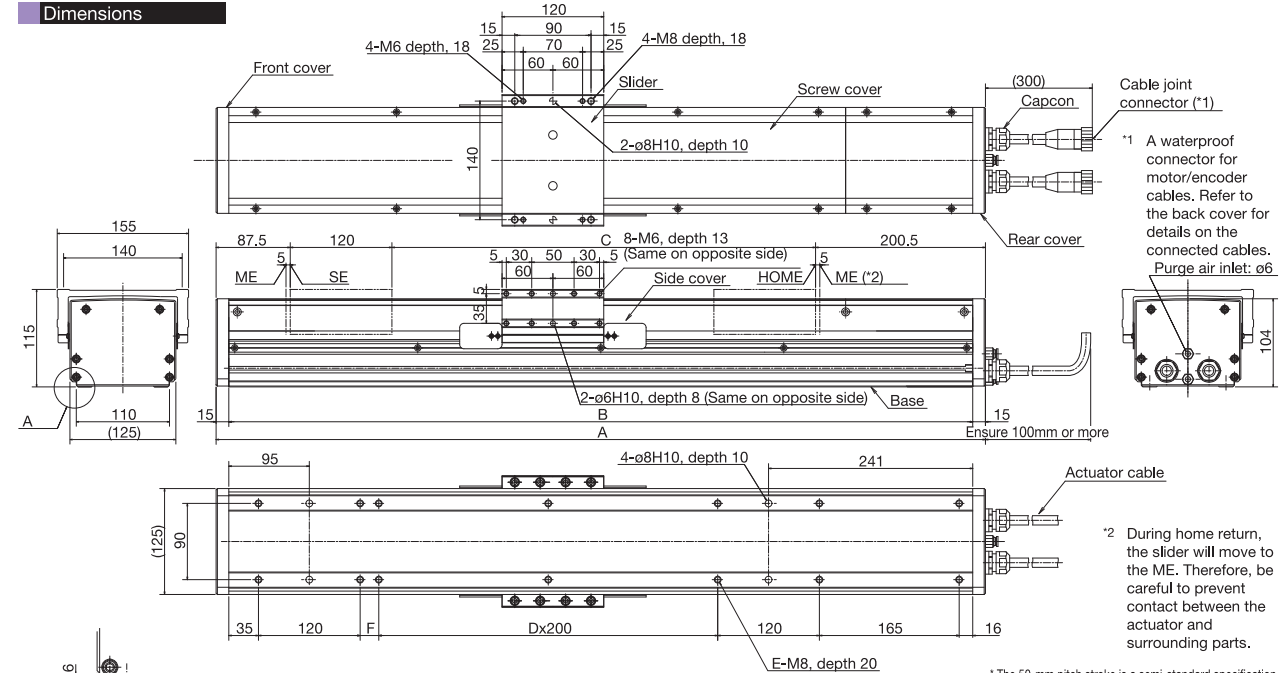
### Materials of Key Components

Name	Materials
Base, slider	Aluminum (A6063S-T5 or equivalent) with white alumite treatment
Side cover, screw cover	Aluminum (A6063S-T5 or equivalent) with white alumite treatment
Front cover, rear cover	A5052 with white alumite treatment
Actuator cable	PVC
Capcon	Nylon 66

### Common Specifications

Drive System (Note 3)	Ball screw, rolled C10 [rolled C5 or equivalent]
Positioning repeatability (Note 3)	±0.02mm [±0.01mm]
Backlash (Note 3)	0.05 mm or less [0.02 mm or less]
Guide	Integrated with the base
Allowable load moment	Ma: 34.8 N · m, Mb: 49.5 N · m, Mc: 80.8 N · m
Overhang load length	600 mm or less in Ma, Mb or Mc direction
Grease	Food grease (Medallion FM Grease No. 1)
Cable length (Note 4)	N: No cable, S: 3 m, M: 5 m, X□□: Specified length
Protection class (Note 5)	IP65
Operating temperature/humidity	0 ~ 40°C, 85%RH or below (non-condensing)

### Dimensions



\*1 A waterproof connector for motor/encoder cables. Refer to the back cover for details on the connected cables. Purge air inlet: ø6

\*2 During home return, the slider will move to the ME. Therefore, be careful to prevent contact between the actuator and surrounding parts.

\* The 50-mm pitch stroke is a semi-standard specification.

Stroke	(50)	100	(150)	200	(250)	300	(350)	400	(450)	500	(550)	600	(650)	700	(750)	800	(850)	900	(950)	1000
A	458	508	558	608	658	708	758	808	858	908	958	1008	1058	1108	1158	1208	1258	1308	1358	1408
B	428	478	528	578	628	678	728	778	828	878	928	978	1028	1078	1128	1178	1228	1278	1328	1378
C	50	100	150	200	250	300	350	400	450	500	550	600	650	700	750	800	850	900	950	1000
D	—	—	—	—	—	1	1	1	1	2	2	2	2	3	3	3	3	4	4	4
E	10	10	10	10	10	12	12	12	12	14	14	14	14	16	16	16	16	18	18	18
F	-28	22	72	122	172	22	72	122	172	22	72	122	172	22	72	122	172	22	72	122
Weight(kg)	10.9	11.7	12.6	13.4	14.3	15.1	16.0	16.8	17.7	18.5	19.4	20.2	21.1	21.9	22.8	23.6	24.5	25.3	26.2	27.0
Maximum speed (mm/s) * Varies depending on the stroke.	Lead 10	500										455		365		300		250		
	Lead 5	250										225		180		150		125		

### Applicable Controller Specifications

Applicable controller	Maximum number of controlled axes	Connectable encoder type	Operating method	Power-supply voltage
X-SEL - P/Q	6 axes	Absolute/incremental	Programming	3-Phase AC200V
XSEL - J/K	4 axes	Absolute/incremental	Programming	AC100V AC200V
SSEL	1 axis	Absolute/incremental	Programming	
SCON	1 axis	Absolute/incremental	Positioner/Pulse-train	



(Note 1) A longer stroke will result in a lower maximum speed to prevent the ball screw from reaching a dangerous speed. (Refer to the above table for the maximum speed at a given stroke.)  
 (Note 2) Based on an acceleration of 0.3 G.  
 (Note 3) The figures in square brackets apply to the ISPWA series.  
 (Note 4) The maximum cable length is 30 m. Specify the desired length in meters (e.g., X08 = 8 m).  
 (Note 5) IP65 applies when air purge is performed. Without air purge, the protection class is IP54. The ISWA/ISPWA must be installed horizontally. If the actuator is installed on its side or oriented vertically, water may enter the interior.

# 3

ISWA/ISPWA

Sold & Serviced By:

Toll Free Phone (877) SERV098  
 Toll Free Fax (877) SERV099  
 www.electromate.com  
 sales@electromate.com

# ISWA-M-200

Single-Axis Robot, Medium Splash-Proof Type,  
Actuator Width 125 mm, 200 W, Straight Shape

# ISPWA-M-200

Single-Axis Robot, Medium Splash-Proof Type,  
Actuator Width 125 mm, 200 W, Straight Shape High-precision specification

Type Medium splash-proof Stroke 100~1000mm Load capacity 70 kg (horizontal)

Model specification items Series Type Encoder type Motor output Lead Stroke Controller Cable length Options

(Example) ISWA [ISPWA] - M - A - 200 - 20 - 1000 - T1 - S - RT



## Model/Specifications

Model	Encoder Type	Motor output (W)	Lead (mm)	Stroke (in increments of 50-mm)	Speed (Note 1) (mm/s)	Load capacity (kg) (Note 2)		Rated thrust (N)
						Horizontal (kg)	Vertical (kg)	
ISWA [ISPWA]-M- [1]-200-20- [2]- [3]- [4]- [5]	A: Absolute	200	20	100~1000	1000	30	—	169.5
ISWA [ISPWA]-M- [1]-200-10- [2]- [3]- [4]- [5]	I: Incremental		10		500	70	—	340.1

\* [1] [2] [3] [4] and [5] in the model numbers shown above respectively indicate the encoder type, stroke, applicable controller, cable length and applicable options.

## Options

Name	Type	Page	Remarks
Reverse Home Specification	NM	—	
Guide with ball-retaining mechanism	RT	—	

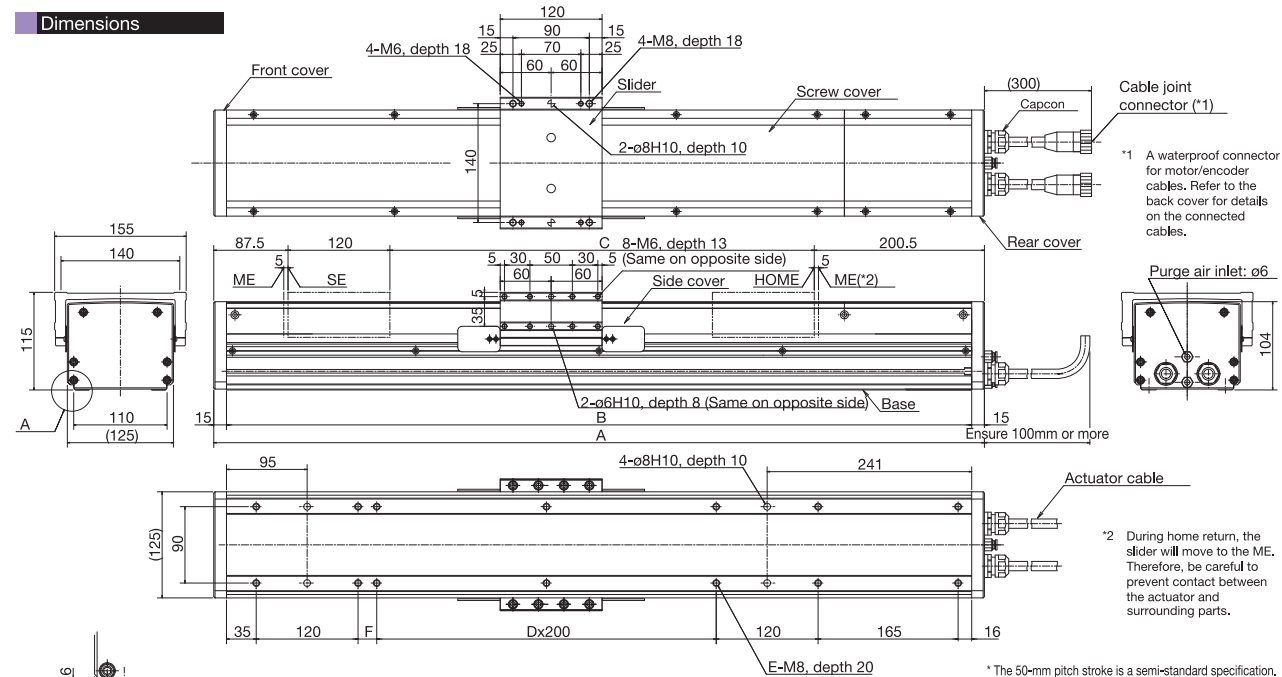
## Materials of Key Components

Name	Materials
Base, slider	Aluminum (A6063S-T5 or equivalent) with white alumite treatment
Side cover, screw cover	Aluminum (A6063S-T5 or equivalent) with white alumite treatment
Front cover, rear cover	A5052 with white alumite treatment
Actuator cable	PVC
Capcon	Nylon 66

## Common Specifications

Drive System (Note 3)	Ball screw, rolled C10 [rolled C5 or equivalent]
Positioning repeatability (Note 3)	±0.02mm [±0.01mm]
Backlash (Note 3)	0.05 mm or less [0.02 mm or less]
Guide	Integrated with the base
Allowable load moment	Ma: 34.8 N • m, Mb: 49.5 N • m, Mc: 80.8 N • m
Overhang load length	600 mm or less in Ma, Mb or Mc direction
Grease	Food grease (Medallion FM Grease No. 1)
Cable length (Note 4)	N: No cable, S: 3 m, M: 5 m, X□□: Specified length
Protection class (Note 5)	IP65
Operating temperature/humidity	0 ~ 40°C, 85%RH or below (non-condensing)

## Dimensions



\*1 A waterproof connector for motor/encoder cables. Refer to the back cover for details on the connected cables.

\*2 During home return, the slider will move to the ME. Therefore, be careful to prevent contact between the actuator and surrounding parts.

\* The 50-mm pitch stroke is a semi-standard specification.

Stroke	(50)	100	(150)	200	(250)	300	(350)	400	(450)	500	(550)	600	(650)	700	(750)	800	(850)	900	(950)	1000
A	458	508	558	608	658	708	758	808	858	908	958	1008	1058	1108	1158	1208	1258	1308	1358	1408
B	428	478	528	578	628	678	728	778	828	878	928	978	1028	1078	1128	1178	1228	1278	1328	1378
C	50	100	150	200	250	300	350	400	450	500	550	600	650	700	750	800	850	900	950	1000
D	—	—	—	—	—	1	1	1	1	2	2	2	2	3	3	3	3	4	4	4
E	10	10	10	10	10	12	12	12	12	14	14	14	14	16	16	16	16	18	18	18
F	-28	22	72	122	172	22	72	122	172	22	72	122	172	22	72	122	172	22	72	122
Weight (kg)	11.1	11.9	12.8	13.6	14.5	15.3	16.2	17.0	17.9	18.7	19.6	20.4	21.3	22.1	23.0	23.8	24.7	25.5	26.4	27.2
Maximum speed (mm/s) <small>* Varies depending on the stroke.</small>	Lead 20	1000										915	735	600	500					
	Lead 10	500										455	365	300	250					

## Applicable Controller Specifications

Applicable controller	Maximum number of controlled axes	Connectable encoder type	Operating method	Power-supply voltage
X-SEL - P/Q	6 axes	Absolute/incremental	Programming	3-Phase AC200V
XSEL - J/K	4 axes	Absolute/incremental	Programming	AC100V
SSEL	1 axis	Absolute/incremental	Programming	AC200V
SCON	1 axis	Absolute/incremental	Positioner/Pulse-train	AC200V

**Caution**

(Note 1) A longer stroke will result in a lower maximum speed to prevent the ball screw from reaching a dangerous speed. (Refer to the above table for the maximum speed at a given stroke.)  
 (Note 2) Based on an acceleration of 0.3 G.  
 (Note 3) The figures in square brackets apply to the ISPWA series.  
 (Note 4) The maximum cable length is 30 m. Specify the desired length in meters (e.g., X08 = 8 m).  
 (Note 5) IP65 applies when air purge is performed. Without air purge, the protection class is IP54.  
 The ISWA/ISPWA must be installed horizontally. If the actuator is installed on its side or oriented vertically, water may enter the interior.

# ISWA-L-200

Single-Axis Robot, Large Splash-Proof Type,  
Actuator Width 155 mm, 200 W, Straight Shape

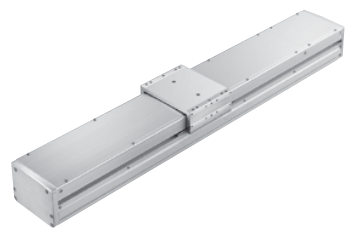
# ISPWA-L-200

Single-Axis Robot, Large Splash-Proof Type,  
Actuator Width 155 mm, 200 W, Straight Shape High-precision specification

Type Large splash-proof Stroke 100~1200mm Load capacity 70 kg (horizontal)

Model specification items Series Type Encoder type Motor output Lead Stroke Controller Cable length Options

(Example) ISWA - L - A - 200 - 10 - 1200 - T1 - S - RT



## Model/Specifications

Model	Encoder Type	Motor output (W)	Lead (mm)	Stroke (in increments of 50-mm)	Speed (Note 1) (mm/s)	Load capacity (kg) (Note 2)		Rated thrust (N)
						Horizontal (kg)	Vertical (kg)	
ISWA [ISPWA]-L- [1]-200-20-[2]-[3]-[4]-[5]	A: Absolute	200	20	100~1200	1000	30	—	169.5
ISWA [ISPWA]-L- [1]-200-10-[2]-[3]-[4]-[5]	I: Incremental		10		500	70	—	340.1

[1][2][3][4]and[5]in the model numbers shown above respectively indicate the encoder type, stroke, applicable controller, cable length and applicable options.

## Options

Name	Type	Page	Remarks
Reverse Home Specification	NM	—	
Guide with ball-retaining mechanism	RT	—	

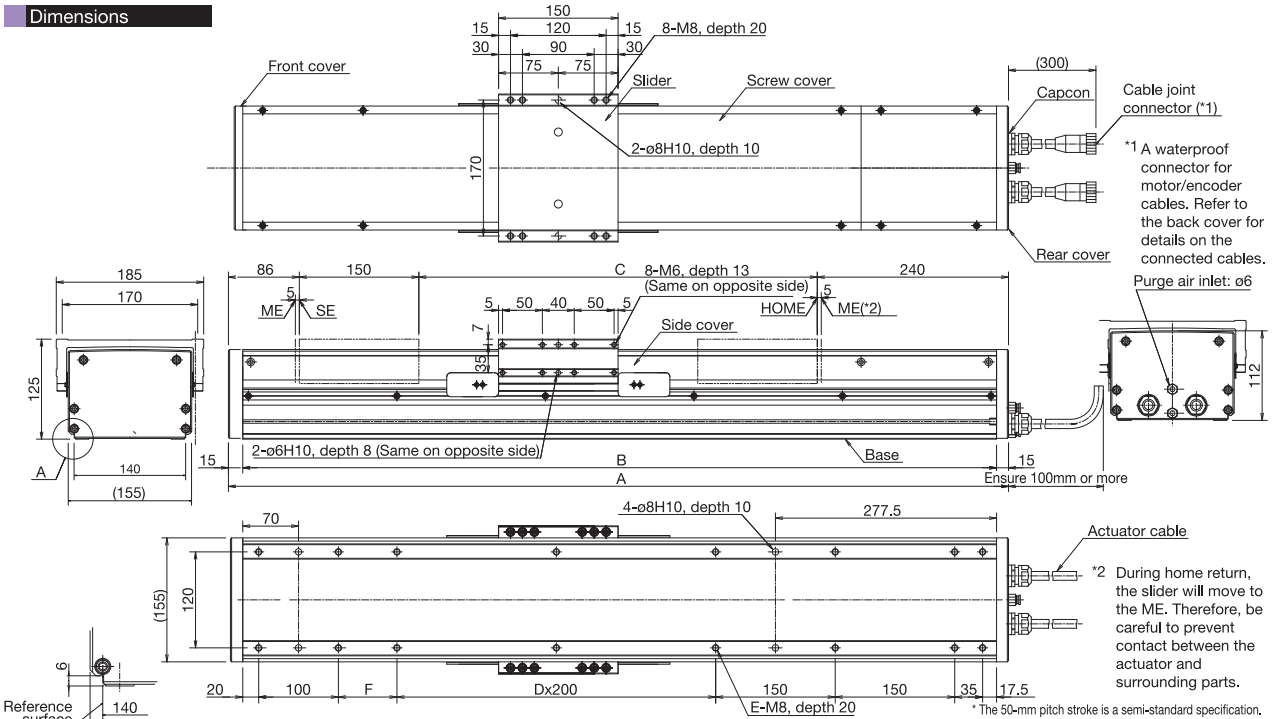
## Materials of Key Components

Name	Materials
Base, slider	Aluminum (A6063S-T5 or equivalent) with white alumite treatment
Side cover, screw cover	Aluminum (A6063S-T5 or equivalent) with white alumite treatment
Front cover, rear cover	A5052 with white alumite treatment
Actuator cable	PVC
Capcon	Nylon 66

## Common Specifications

Drive System (Note 3)	Ball screw, rolled C10 [rolled C5 or equivalent]
Positioning repeatability (Note 3)	±0.02mm [±0.01mm]
Backlash (Note 3)	0.05 mm or less [0.02 mm or less]
Guide	Integrated with the base
Allowable load moment	Ma: 52.5 N • m, Mb: 75.0 N • m, Mc: 124.5 N • m
Overhang load length	750 mm or less in Ma, Mb or Mc direction
Grease	Food grease (Medallion FM Grease No. 1)
Cable length (Note 4)	N: No cable, S: 3 m, M: 5 m, X□□: Specified length
Protection class (Note 5)	IP65
Operating temperature/humidity	0 ~ 40°C, 85%RH or below (non-condensing)

## Dimensions



Stroke	100	(150)	200	(250)	300	(350)	400	(450)	500	(550)	600	(650)	700	(750)	800	(850)	900	(950)	1000	(1050)	1100	(1150)	1200	
A	576	626	676	726	776	826	876	926	976	1026	1076	1126	1176	1226	1276	1326	1376	1426	1476	1526	1576	1626	1676	
B	546	596	646	696	746	796	846	896	946	996	1046	1096	1146	1196	1246	1296	1346	1396	1446	1496	1546	1596	1646	
C	100	150	200	250	300	350	400	450	500	550	600	650	700	750	800	850	900	950	1000	1050	1100	1150	1200	
D	—	—	—	1	1	1	1	2	2	2	2	3	3	3	3	4	4	4	4	5	5	5	5	
E	12	12	12	14	14	14	14	16	16	16	16	18	18	18	18	20	20	20	20	22	22	22	22	
F	73.5	123.5	173.5	23.5	73.5	123.5	173.5	23.5	73.5	123.5	173.5	23.5	73.5	123.5	173.5	23.5	73.5	123.5	173.5	23.5	73.5	123.5	173.5	
Weight (kg)	19.9	20.9	21.8	22.8	23.7	24.7	25.6	26.6	27.5	28.5	29.4	30.4	31.3	32.3	33.2	34.2	35.1	36.1	37.0	38.0	38.9	39.9	40.8	
Maximum speed (mm/s) <small>*Varies depending on the stroke.</small>	Lead 20		1000												930		765		640		545		465	
	Lead 10		500												465		380		320		270		230	

## Applicable Controller Specifications

Applicable controller	Maximum number of controlled axes	Connectable encoder type	Operating method	Power-supply voltage
X-SEL - P/Q	6 axes	Absolute/incremental	Programming	3-Phase AC200V
XSEL - J/K	4 axes	Absolute/incremental	Programming	AC100V AC200V
SSEL	1 axis	Absolute/incremental	Programming	
SCON	1 axis	Absolute/incremental	Positioner/Pulse-train	

**Caution**

(Note 1) A longer stroke will result in a lower maximum speed to prevent the ball screw from reaching a dangerous speed. (Refer to the above table for the maximum speed at a given stroke.)  
 (Note 2) Based on an acceleration of 0.3 G.  
 (Note 3) The figures in square brackets apply to the ISPWA series.  
 (Note 4) The maximum cable length is 30 m. Specify the desired length in meters (e.g., X08 = 8 m).  
 (Note 5) IP65 applies when air purge is performed. Without air purge, the protection class is IP54. The ISWA/ISPWA must be installed horizontally. If the actuator is installed on its side or oriented vertically, water may enter the interior.

**5**

ISWA/ISPWA

Sold & Serviced By:  
**ELECTROMATE**

Toll Free Phone (877) SERV098  
Toll Free Fax (877) SERV099  
www.electromate.com  
sales@electromate.com

# ISWA-L-400

Single-Axis Robot, Large Splash-Proof Type,  
Actuator Width 155 mm, 400 W, Straight Shape

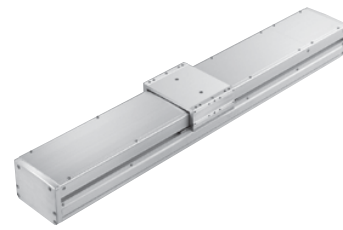
# ISPWA-L-400

Single-Axis Robot, Large Splash-Proof Type,  
Actuator Width 155 mm, 400 W, Straight Shape High-precision specification

Type / Large splash-proof    Stroke / 100~1200mm    Load capacity / 70 kg (horizontal)

Model specification items    Series    Type    Encoder type    Motor output    Lead    Stroke    Controller    Cable length    Options

(Example) ISWA - L - A - 400 - 20 - 1200 - T1 - S - RT



## Model/ Specifications

Model	Encoder type	Motor output (W)	Lead (mm)	Stroke (in increments of 50-mm)	Speed (Note 1) (mm/ s)	Load capacity (kg) (Note 2)		Rated thrust (N)
						Horizontal (kg)	Vertical (kg)	
ISWA [ISPWA]-L- [1]-200-20- [2]- [3]- [4]- [5]	A: Absolute I: Incremental	400	20	100~1200	1000	70	—	340.1

[1] [2] [3] [4] and [5] in the model numbers shown above respectively indicate the encoder type, stroke, applicable controller, cable length and applicable options.

## Options

Name	Type	Page	Remarks
Reverse Home Specification	NM	—	
Guide with ball-retaining mechanism	RT	—	

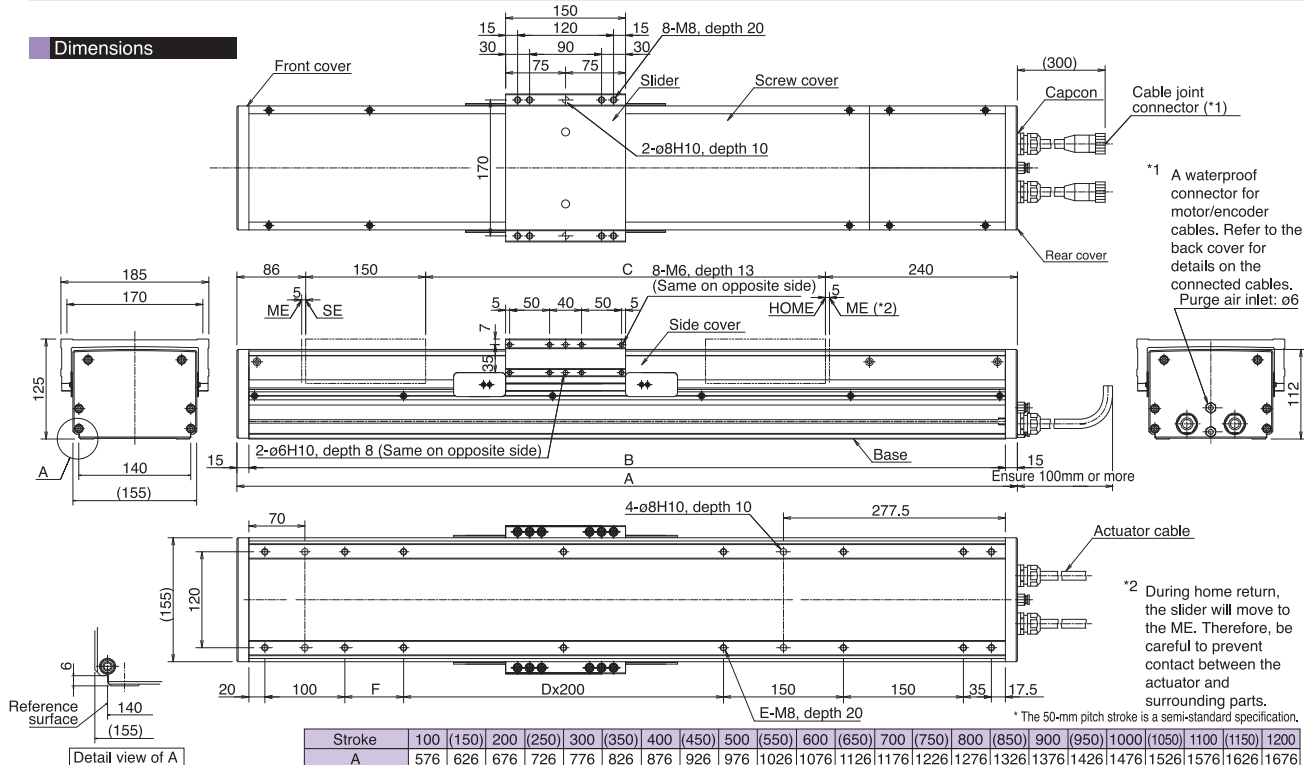
## Materials of Key Components

Name	Materials
Base, slider	Aluminum (A6063S-T5 or equivalent) with white alumite treatment
Side cover, screw cover	Aluminum (A6063S-T5 or equivalent) with white alumite treatment
Front cover, rear cover	A5052 with white alumite treatment
Actuator cable	PVC
Capcon	Nylon 66

## Common Specifications

Drive System (Note 3)	Ball screw, rolled C10 [rolled C5 or equivalent]
Positioning repeatability (Note 3)	±0.02mm [±0.01mm]
Backlash (Note 3)	0.05 mm or less [0.02 mm or less]
Guide	Integrated with the base
Allowable load moment	Ma: 52.5 N · m, Mb: 75.0 N · m, Mc: 124.5 N · m
Overhang load length	750 mm or less in Ma, Mb or Mc direction
Grease	Food grease (Medallion FM Grease No. 1)
Cable length (Note 4)	N: No cable, S: 3 m, M: 5 m, X□□: Specified length
Protection class (Note 5)	IP65
Operating temperature/humidity	0 ~ 40°C, 85%RH or below (non-condensing)

## Dimensions



\*1 A waterproof connector for motor/encoder cables. Refer to the back cover for details on the connected cables. Purge air inlet: ø6

\*2 During home return, the slider will move to the ME. Therefore, be careful to prevent contact between the actuator and surrounding parts.

\* The 50-mm pitch stroke is a semi-standard specification.

Stroke	100	150	200	250	300	350	400	450	500	550	600	650	700	750	800	850	900	950	1000	1050	1100	1150	1200
A	576	626	676	726	776	826	876	926	976	1026	1076	1126	1176	1226	1276	1326	1376	1426	1476	1526	1576	1626	1676
B	546	596	646	696	746	796	846	896	946	996	1046	1096	1146	1196	1246	1296	1346	1396	1446	1496	1546	1596	1646
C	100	150	200	250	300	350	400	450	500	550	600	650	700	750	800	850	900	950	1000	1050	1100	1150	1200
D	—	—	—	1	1	1	1	2	2	2	2	3	3	3	3	4	4	4	4	5	5	5	5
E	12	12	12	14	14	14	14	16	16	16	16	18	18	18	18	18	20	20	20	22	22	22	22
F	73.5	123.5	173.5	23.5	73.5	123.5	173.5	23.5	73.5	123.5	173.5	23.5	73.5	123.5	173.5	23.5	73.5	123.5	173.5	23.5	73.5	123.5	173.5
Weight (kg)	20.1	20.6	22.0	22.5	23.9	24.4	25.8	26.3	27.7	28.2	29.6	30.1	31.5	32.0	33.4	33.9	35.3	35.8	37.2	37.7	39.1	39.6	41.0

Maximum speed (mm/s)  
\* Varies depending on the stroke.

## Applicable Controller Specifications

Applicable controller	Maximum number of controlled axes	Connectable encoder type	Operating method	Power-supply voltage
X-SEL - P/Q	6 axes	Absolute/incremental	Programming	3-Phase AC200V
XSEL - J/K	4 axes	Absolute/incremental	Programming	AC100V
SSEL	1 axis	Absolute/incremental	Programming	AC200V
SCON	1 axis	Absolute/incremental	Positioner/Pulse-train	

**Caution**

(Note 1) A longer stroke will result in a lower maximum speed to prevent the ball screw from reaching a dangerous speed. (Refer to the above table for the maximum speed at a given stroke.)  
 (Note 2) Based on an acceleration of 0.3 G.  
 (Note 3) The figures in square brackets apply to the ISPWA series.  
 (Note 4) The maximum cable length is 30 m. Specify the desired length in meters (e.g., X08 = 8 m).  
 (Note 5) IP65 applies when air purge is performed. Without air purge, the protection class is IP54.

## Controller

A controller of one of three types—programming type, positioner type and pulse-train input type—can be selected according to your specific control needs.

\* Refer to the separate catalog for the details of each controller.

### XSEL Controller

A high-function, multi-axis controller equipped with Super SEL, a programming language that allows for easy programming of complex operations.

- [Features]
- Simultaneous control of up to 6 axes
  - Registration of up to 64 programs/3,000 positions
  - Absolute or incremental specification
  - Supporting DeviceNet, CC-Link, ProfiBus and Ethernet
  - CE Mark certification



### SSEL Controller

Up to 2-axes of program control that enables easy positioning operation. The SSEL program controller has various control functions combined into a single unit similar to that of the XSEL.

- [Features]
- Up to 1,500 positioning points
  - Support of both absolute and incremental actuators
  - and FieldBus Networks, (DeviceNet/CC-Link/ProfiBus)
  - With 2 axes, arc interpolation and path operation can be performed



### SCON Controller

Position controller capable of 1 axis control.

- [Features]
- Supports up to 512 positioning points
  - FieldBus Network (DeviceNet/CC-Link/ProfiBus)
  - Post Driver

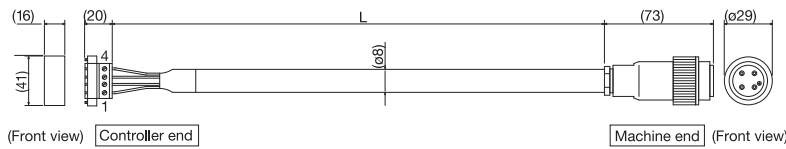


## Motor/Encoder Cables

\* Enter the desired cable length up to 30 m (L) in . Example:080 = 8 m

### Motor Cable (Splash-Proof Specification) for XSEL-J/K/P/Q, SSEL and SCON

[Model: CB-XEU-MA□□□]



#### Wiring Diagram

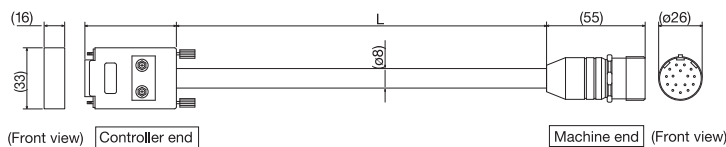
Plug GIC2.5/4-STF-7.62. (Phoenix)

Wire	Signal	No.	No.	Signal	Wire
0.75sq	PE	1	①	PE	0.75sq (crimped)
	U	2	1	U	
	V	3	2	V	
	W	4	3	W	

Plug connector 99-4222-00-04 (BINDER)

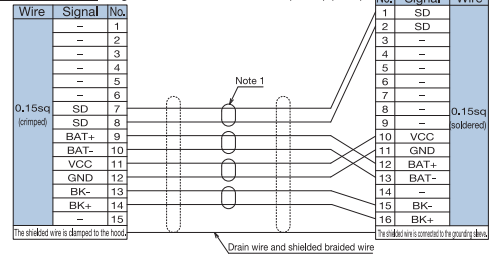
### Encoder Cable (Splash-Proof Specification) for XSEL-J/K

[Model: CB-X-PA□□□-WC]



#### Wiring Diagram

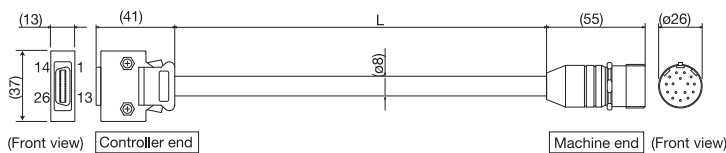
Plug connector :17HE-23150-C (D13A) (DDK)



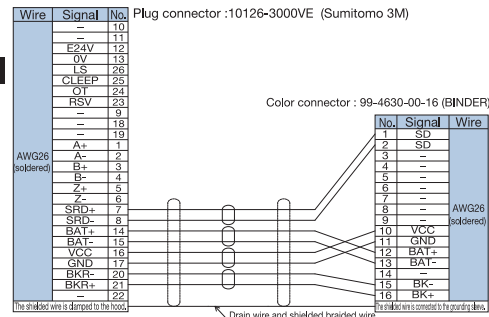
Color connector : 99-4630-00-16 (BINDER)

### Encoder Cable (Splash-Proof Specification) for XSEL-P/Q, SSEL and SCON

[Model: CB-X1-PA□□□-WC]



#### Wiring Diagram



Color connector : 99-4630-00-16 (BINDER)