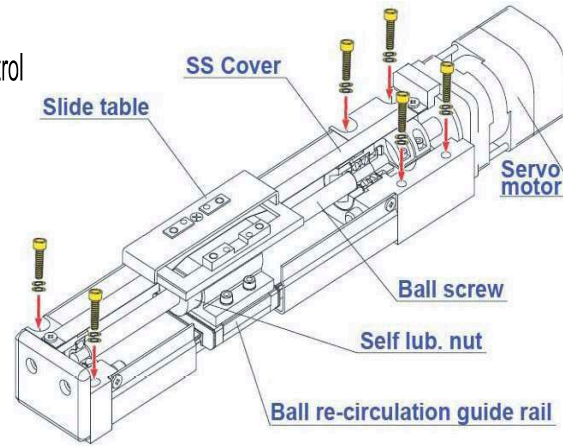
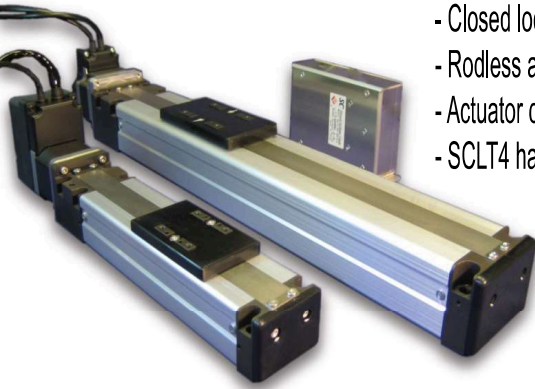




INTRODUCTION

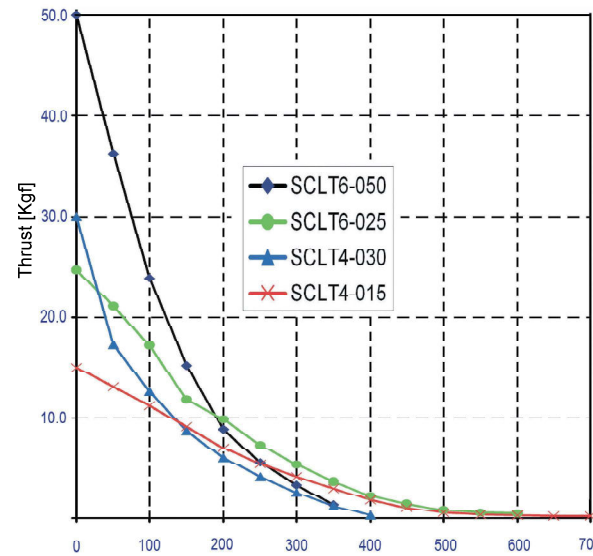
- Closed loop servo motor, built-in/external servo amplifier and control
- Rodless actuator with recirculating ball screw and profile rail.
- Actuator can be mounted from above or below.
- SCLT4 has built in servo amplifier for easy installation.



SPECIFICATIONS

MODEL	SCLT4-015 -XXX AS	SCLT4-030 -XXX AS	SCLT6-025 -XXX AB	SCLT6-050 -XXX AB
Amplifier	Built-in to actuator		External	
Stroke (mm)	50 / 100 / 150 / 200 / 300 / 400 / 500		50 / 100 / 150 / 200 / 300 / 400 / 500 / 600 / 700	
Max. Hor Load weight (kg)	5	10	16	30
Max. Thrust (N) / (kgf)	150 / 15	300 / 30	250 / 25	500 / 50
Push mode max. Thrust (N)/(kgf)	105 / 10.5	210 / 21	175 / 17.5	350 / 35
Ball screw lead (mm)	12	6	12	6
Max. Speed (mm/s) * note 1	700 (680mm/s for 500mm stroke)	400 (340mm/s for 500mm stroke)	600 (500mm/s for 700mm stroke)	350 (600mm: 340mm/s) (700mm: 250mm/s)
Repeatability (mm)	± 0.02	± 0.02	± 0.02	± 0.02
Backlash (mm)	0.1	0.1	0.1	0.1
Max. vertical load (kg)	1.5	2.5	4	6
Max. axial thrust at power ON (N)	15	25	40	60
Load moment (Nm / kgf-cm)	Mp=12 / 120, My=12 / 120, Mr=31 / 310		Mp=25.7 / 257, My=25.7 / 257, Mr=58 / 580	
Overhang length (mm) * note 2	100 or less			
Weight (kg)	1.42/1.53/1.64/1.74/1.96/2.18/2.4			

SPEED-THRUST CURVE



Notes: (*1) Typical data



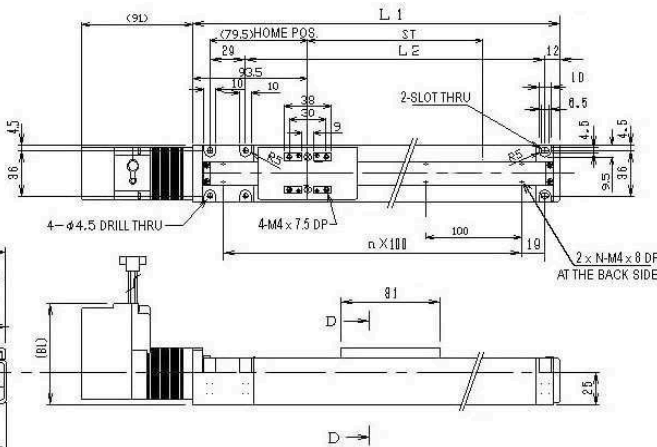
(The calculation of the load moment (kgf-cm) is: $m \text{ (kg)} \times L \text{ (cm)} < M_p, M_y, M_r$)

Notes: (*2) This is the acceptable over hand length from the slider carriage.

The actual moment will be combinations of those moments (Mp, Py, Mr).

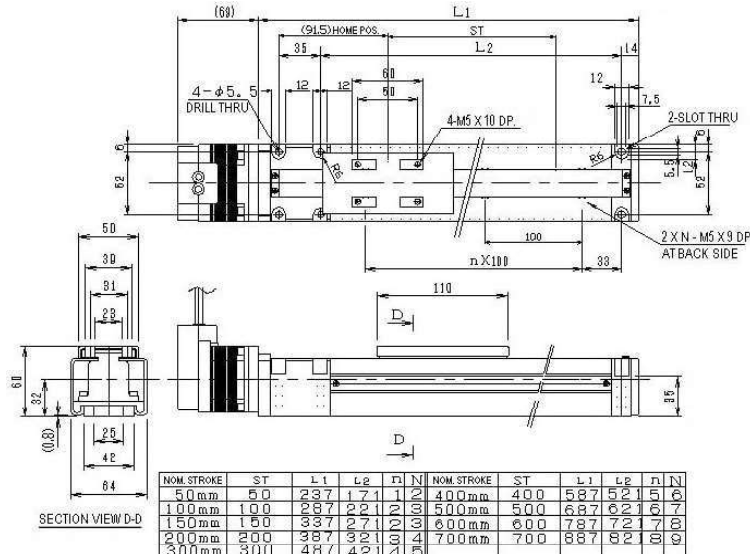
DIMENSIONS (mm)

SCLT4 MODEL



NOM STROKE	ST	L1	L2	n	N	NOM STROKE	ST	L1	L2	n	N
50mm	50	206	151	1	2	300mm	300	456	401	4	5
100mm	100	256	201	2	3	400mm	400	556	501	5	6
150mm	150	306	251	2	3	500mm	500	656	601	6	7
200mm	200	356	301	3	4						

SCLT6 MODEL



NOM STROKE	ST	L1	L2	n	N	NOM STROKE	ST	L1	L2	n	N
50mm	50	237	171	1	2	400mm	400	587	521	5	6
100mm	100	287	221	2	3	500mm	500	687	621	6	7
150mm	150	337	271	2	3	600mm	600	787	721	7	8
200mm	200	387	321	3	4	700mm	700	887	821	8	9
300mm	300	487	421	4	5						



Position Data Programming

Teach Pendant
(CTA-23-EN-SET) Kit price US\$455

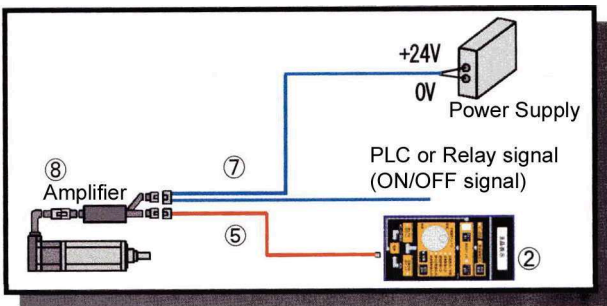
FEATURES

- Easy programming with jog handle
- Jog handle has choice of standard jog and fine jog
- Handle allows data input without jog movement if desired
- Visual indication of the programming procedure
- Complete control over all actuator capabilities
- Program one actuator at a time,

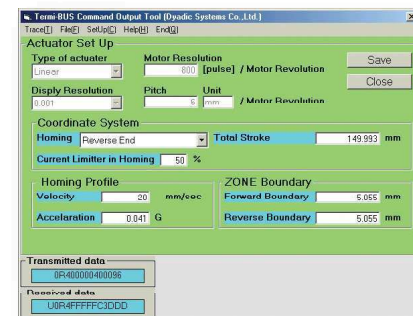
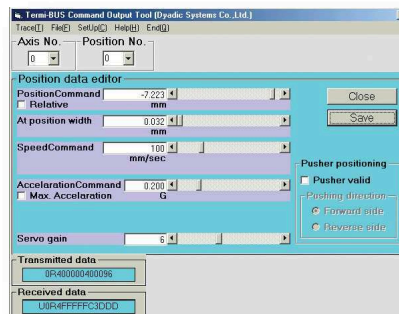
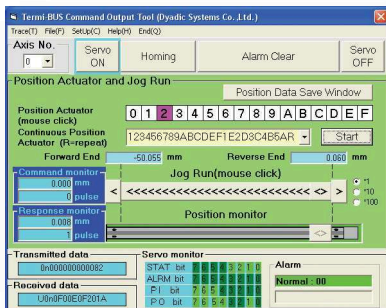
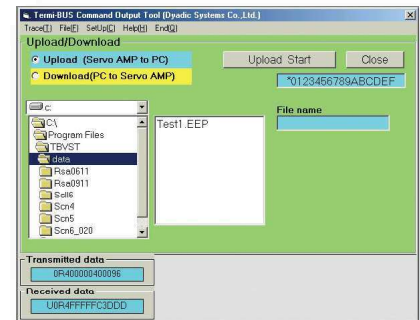
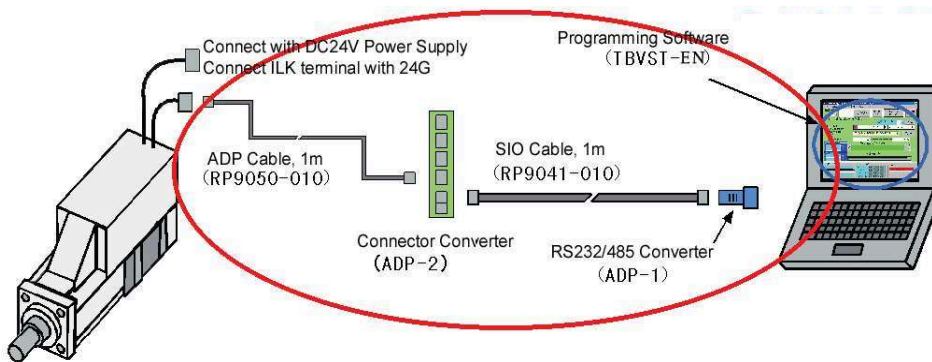
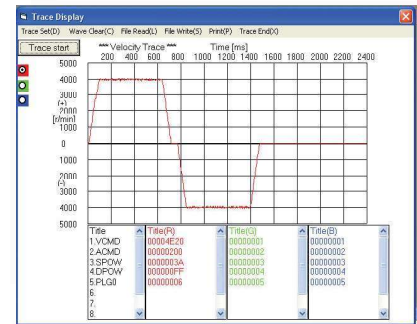
**For multi synchronized actuator motion programming tool, please contact Mirai.



CONNECTION LAYOUT



TBVT SOFTWARE FOR PC



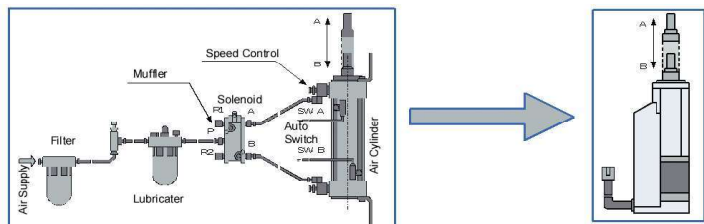
- * Easy Window-based programming
- * Programming with jog and data entry
- * Download & Upload functions
- * Actual movement result analysis function
- * Able to program position parameter/data and sequence program for CTC pendants.
- * Contains all software in one package (TBVT, MVST, CTA-1EX and CTCTOOL)



FREE Download at:
www.miraiintertech.com

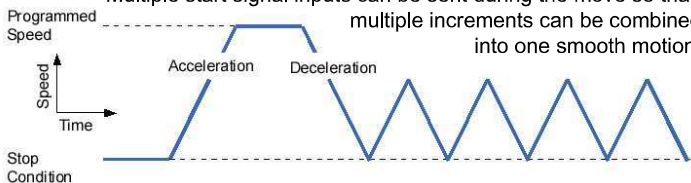
Mechatronics Cylinder Application Notes

Much Simpler Than An Air Cylinder

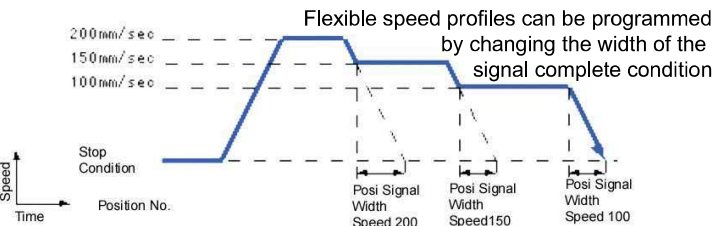


Incremental Movement

Incremental (relative) motions can be programmed for palletizing, etc. Multiple start signal inputs can be sent during the move so that multiple increments can be combined into one smooth motion.

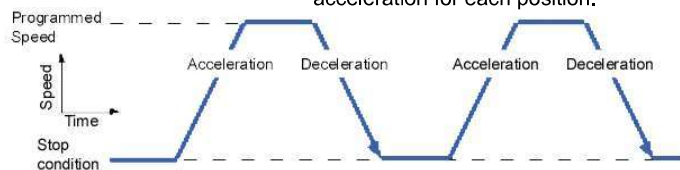


Speed Profile



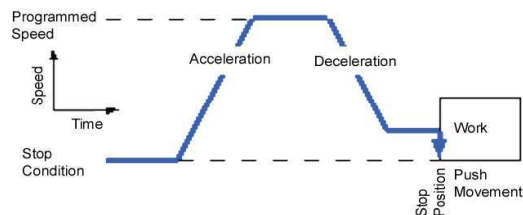
Standard Positioning

Positioning can be programmed with speed and acceleration for each position.



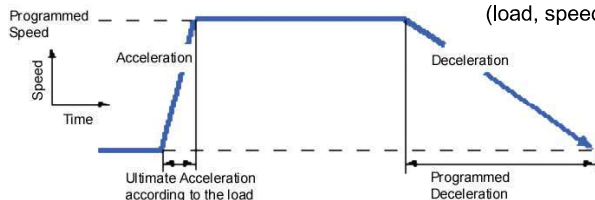
Push Force Mode

Push force mode can be programmed with force data entry (% of max force)



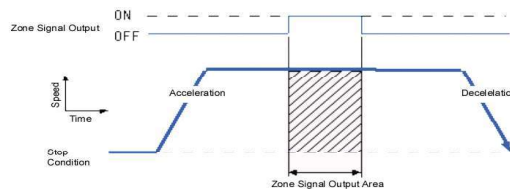
Auto Maximum Acceleration

Ultimate acceleration can be set for the condition (load, speed) automatically and then the deceleration can be programmed.



Zone signal output

The Mechatronics Cylinder can be programmed to energize an output when it is in the desired zone. Duration of the signal can be specified.



PC-CTC Tool Kit

(TBVST-CTC-EN-SET) US\$275

PLC Board

(CTC-67-EN-SET) Kit price US\$395

RP9050-010: ADP cable

ADP-2-4: Connector junction

RP9041-010: SIO Cable

Software

ADP-1: 232/485 Adaptor

FEATURES

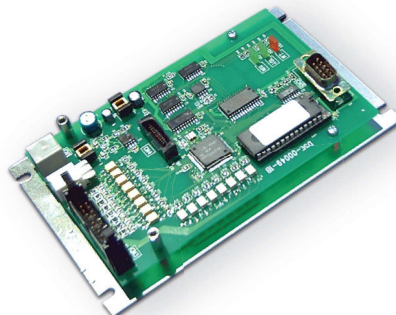
- Easy programming by CTCTOOL software
- Program up to 100 steps, each with timers, I/O conditions, etc.
- Connect up to 8 actuators
- Control up to 5 axes per step
- 6 inputs/6 outputs for users

BENEFITS

- Reduce I/O using pre-made cables
- In complex systems the PLC programming can be simplified by allowing the CTC-67 to execute subroutines selected by the PLC.
- For simple systems (lab scale, bench top), the CTC-67 can be the only controller. System elements can be easily controlled through the programmable I/O.
- Debug mode allows the user to run the sequence one step at a time.
- The time monitor function can ensure the sequence is complete in the required time.

OPTIONAL

USB-RS485-1800-9050
USB Programming Cable For PC



Sold & Serviced By:



Canadian and International Sales

ELECTROMATE

877-737-8698

sales@electromate.com

www.electromate.com

U.S. Sales

SERVO2GO.com

877-378-0240

sales@servo2go.com

www.servo2go.com