



# AXIOM<sup>®</sup> PLUS IS NOW STANDARD WITH ANALOG INPUT AND MODBUS

## Announcing... Version 2.5x

As part of our ongoing commitment to continuation engineering, Tol-O-Matic is pleased to announce the release of version 2.5x of the AxiomPlus. We have incorporated a variety of user-requested features, intended to enhance connectivity, expand the possible applications and increase usability of the AxiomPlus. These features will allow users to connect to a wide range of human interface and analog devices, connect several controllers together and interact in real-time with both the sequential program and the PLC.

For a more in-depth understanding of all these features and their use, you can visit [www.tolomatic.com](http://www.tolomatic.com) and view or download the most recent AxiomPlus Software User's Manual, or call our technical sales group at 1-800-328-2174.

### New Features Including Analog Input

- Dual use analog input (use as analog or opto-isolated input)

- Debug mode added to sequential program

Run program in single steps, multiple steps or to a specified line number

"Watch window" for monitoring and changing values of registers and flags

- Registers have been expanded to include counter, timer and analog values in addition to position, velocity and torque limit

- PLC flags and I/O can be read and written via ModBus or serial port ASCII commands

- Sequential programming instructions added:

Absolute position feedback based on analog input

Analog input position and velocity (force control) moves

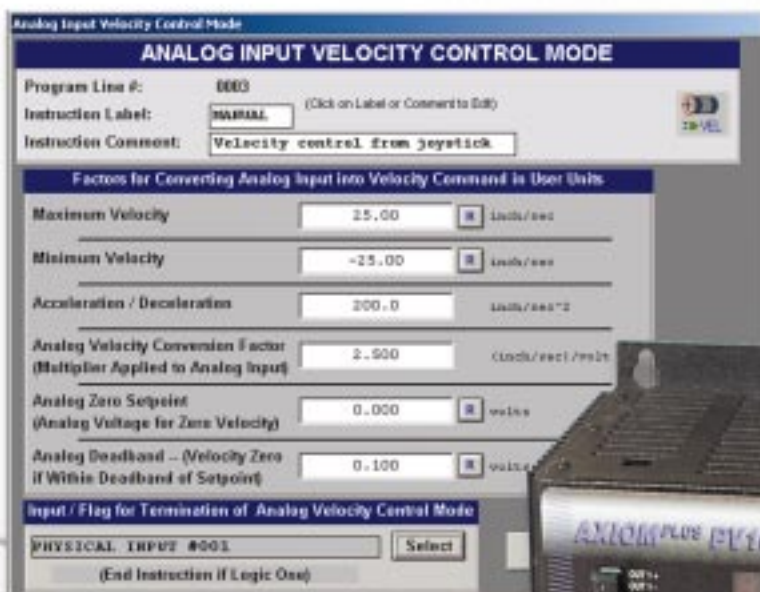
Save analog input to register

Branch on analog input compare

Modify count register value

- PLC instructions added:

"Range window" to process variable compare instruction



Sold & Serviced By:



Toll Free Phone (877) SERV098

Toll Free Fax (877) SERV099

[www.electromate.com](http://www.electromate.com)

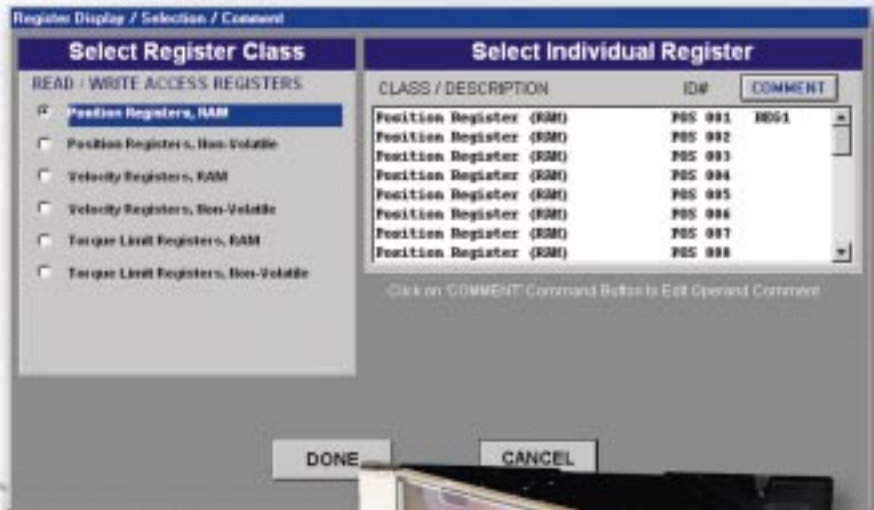
[sales@electromate.com](mailto:sales@electromate.com)



# This new release makes **AXIOMPLUS** the most versatile all-in-one motion control system available in its price range

## **Additional ModBus, Register and PLC Features**

- ModBus RTU and ASCII connectivity
- More registers added along with the ability to use them in more instructions.
- Project Save and Load, Upload and Download.
- Automatic prompting for serial port selection and opening
- Sequential programming instructions added:
  - Assign value to a register.
  - Save Position to Register
  - Maximum Torque Limit Parameter Change
  - Software Travel Limits
  - Branch on Position Compare
  - In-Position Band value can now be entered as user units
- PLC instructions added:
  - Register Compare Input Logic
  - Indexer Status Flag for Torque Peak Limit



Sold & Serviced By:



Toll Free Phone (877) SERV098  
 Toll Free Fax (877) SERV099  
[www.electromate.com](http://www.electromate.com)  
[sales@electromate.com](mailto:sales@electromate.com)