

ES 10 - A

End Support Block _____

Shaft Diameter _____

- 8** - 0.500 inch diameter
- 12** - 0.750 inch diameter
- 16** - 1.000 inch diameter
- 20** - 1.250 inch diameter
- 24** - 1.500 inch diameter
- 32** - 2.000 inch diameter

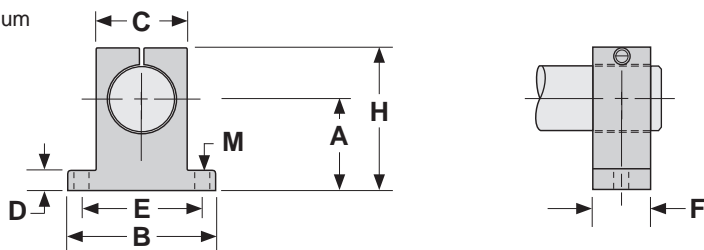
Support Material _____

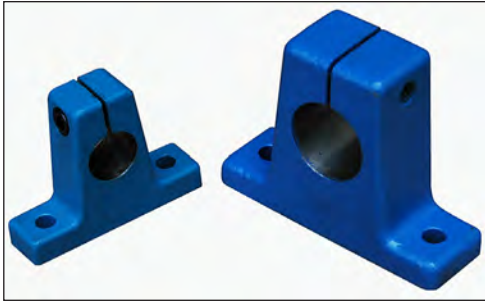
- A** - Aluminum

Dimensions & Specifications: **ES-A** End Shaft Support Block

Model Number	Nominal Shaft Diameter (inches)	Dimensions (inches)									Support Weight (lbs)
		A +/- .001	B	C	D	E +/- .010	F	H	M		
									hole	bolt size	
ES8-A	0.500	1.000	2.000	0.875	.250	1.500	0.625	1.625	.188	#8	.08
ES12-A	0.750	1.250	2.500	1.250	.313	2.000	0.750	2.063	.218	#10	.16
ES16-A	1.000	1.500	3.063	1.500	.375	2.500	1.000	2.500	.281	1/4	.30
ES20-A	1.250	1.750	3.750	2.000	.438	3.000	1.125	3.000	.346	5/16	.53
ES24-A	1.500	2.000	4.375	2.250	.500	3.500	1.250	3.437	.346	5/16	.73
ES32-A	2.000	2.500	5.500	3.000	.625	4.500	1.500	4.500	.406	3/8	1.40

Material: 6061-T6 aluminum
Finish: natural finish





ES 10 - S

End Support Block _____

Shaft Diameter _____

- 8** - 0.500 inch diameter
- 10** - 0.625 inch diameter
- 12** - 0.750 inch diameter
- 16** - 1.000 inch diameter
- 20** - 1.250 inch diameter
- 24** - 1.500 inch diameter
- 32** - 2.000 inch diameter

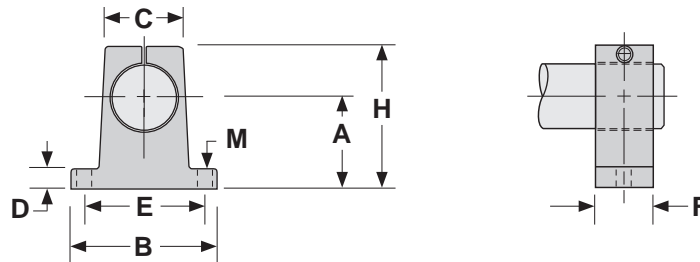
Support Material _____

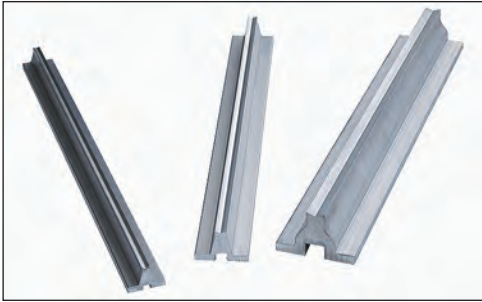
S - Steel

Dimensions & Specifications: **ES-S** End Shaft Support Block

Model Number	Nominal Shaft Diameter (inches)	Dimensions (inches)									Support Weight (lbs)
		A +/- .001	B	C	D	E +/- .010	F	H	M		
									hole	bolt size	
ES8-S	0.500	1.000	2.000	0.750	.250	1.500	0.625	1.625	.218	#10	.28
ES10-S	0.625	1.000	2.500	0.875	.312	1.875	0.750	1.750	.218	#10	.36
ES12-S	0.750	1.250	2.750	1.000	.375	2.000	0.750	2.125	.281	1/4	.53
ES16-S	1.000	1.500	3.312	1.375	.375	2.500	1.000	2.625	.281	1/4	1.00
ES20-S	1.250	1.750	4.000	1.750	.438	3.000	1.250	3.000	.343	5/16	2.10
ES24-S	1.500	2.000	4.750	2.000	.500	3.500	1.250	3.500	.343	5/16	2.80
ES32-S	2.000	2.500	6.000	2.625	.625	4.500	1.500	4.500	.406	3/8	5.10

Material: C1045 steel
Finish: blue enamel





ARS 10 - PD - 24

Aluminum Rail Support

Shaft Diameter Supported

- 8** - 0.500 inch diameter
- 10** - 0.625 inch diameter
- 12** - 0.750 inch diameter
- 16** - 1.000 inch diameter
- 20** - 1.250 inch diameter
- 24** - 1.500 inch diameter
- 32** - 2.000 inch diameter

Pre-Drilled

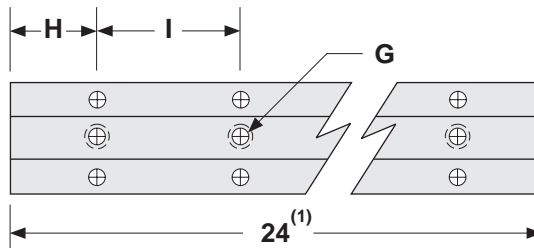
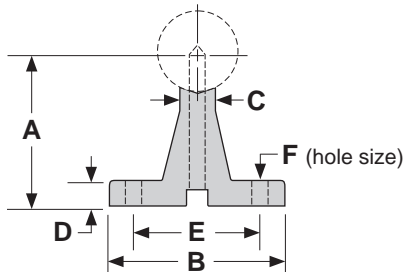
- No mounting hole pattern
- PD** - pre-drilled hole pattern

Support length

- 24** - 24 inch length

Dimensions & Specifications: **ARS-PD** Shaft Support

Model Number Without Holes	Model Number With Pre-drilled Holes	Nominal Shaft Diameter (inches)	Dimensions (inches)										Support Weight (lbs/in)
			A +/- .002	B	C	D	E +/- .010	F hole	G bolt size	H	I		
ARS8	ARS8-PD	0.500	1.125	1.500	.250	.187	1.000	.169	#6-32 x 0.87	2.00	4.00	.050	
ARS10	ARS10-PD	0.625	1.125	1.625	.312	.250	1.125	.193	#8-32 x 0.87	2.00	4.00	.063	
ARS12	ARS12-PD	0.750	1.500	1.750	.375	.250	1.250	.221	#10-32 x 1.25	3.00	6.00	.083	
ARS16	ARS16-PD	1.000	1.750	2.125	.500	.250	1.500	.281	1/4-20 x 1.50	3.00	6.00	.108	
ARS20	ARS20-PD	1.250	2.125	2.500	.562	.312	1.875	.343	5/16-18 x 1.75	3.00	6.00	.146	
ARS24	ARS24-PD	1.500	2.500	3.000	.687	.375	2.250	.406	3/8-16 x 2.00	4.00	8.00	.213	
ARS32	ARS32-PD	2.000	3.250	3.750	.875	.500	2.750	.531	1/2-13 x 3.25	4.00	8.00	.342	



Material: 6061-T6 aluminum
Finish: natural finish

Shorter lengths available. Contact the factory.



LSRS 10 - PD - 48

Low Profile Steel Rail Support

Shaft Diameter Supported

- 8** - 0.500 inch diameter
- 10** - 0.625 inch diameter
- 12** - 0.750 inch diameter
- 16** - 1.000 inch diameter
- 20** - 1.250 inch diameter
- 24** - 1.500 inch diameter
- 32** - 2.000 inch diameter

Pre-Drilled

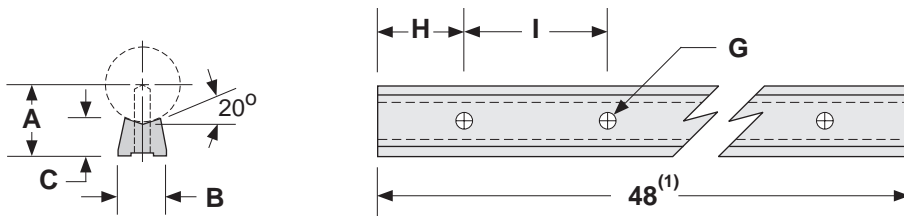
- No mounting hole pattern
- PD** - pre-drilled hole pattern

Support length

- 48** - 48 inch length

Dimensions & Specifications: LRS-PD Shaft Support

Model Number		Nominal Shaft Diameter (inches)	Dimensions (inches)							Support Weight (lbs/in)	
Without Holes	With Pre-drilled Holes		A +/- .002	B	C	G		H	I		
						hole	bolt size				
LSRS8	LSRS8-PD	0.500	0.562	0.37	.341	.169	#6-32	2.00	4.00	.028	
LSRS10	LSRS10-PD	0.625	0.687	0.45	.412	.193	#8-32	2.00	4.00	.041	
LSRS12	LSRS12-PD	0.750	0.750	0.51	.420	.221	#10-32	3.00	6.00	.047	
LSRS16	LSRS16-PD	1.000	1.000	0.69	.560	.281	1/4-20	3.00	6.00	.089	
LSRS20	LSRS20-PD	1.250	1.187	0.78	.626	.343	5/16-18	3.00	6.00	.106	
LSRS24	LSRS24-PD	1.500	1.375	0.93	.703	.406	3/8-16	4.00	8.00	.140	
LSRS32	LSRS32-PD	2.000	1.750	1.18	.845	.531	1/2-13	4.00	8.00	.230	



Material: AISI C-1018 steel
Finish: natural finish

Shorter lengths available. Contact the factory.