

**LBCA** - **12** - **S**

**Linear Bearing Series**

- LBCA** - One Precision linear bearing (closed - all steel)
- LBOA** - One Precision linear bearing (open - all steel)

**Nominal Diameter**

- 4** - 0.250 inch diameter
- 6** - 0.375 inch diameter
- 8** - 0.500 inch diameter
- 10** - 0.625 inch diameter
- 12** - 0.750 inch diameter
- 16** - 1.000 inch diameter
- 20** - 1.250 inch diameter
- 24** - 1.500 inch diameter
- 32** - 2.000 inch diameter

**Wiper Seals**

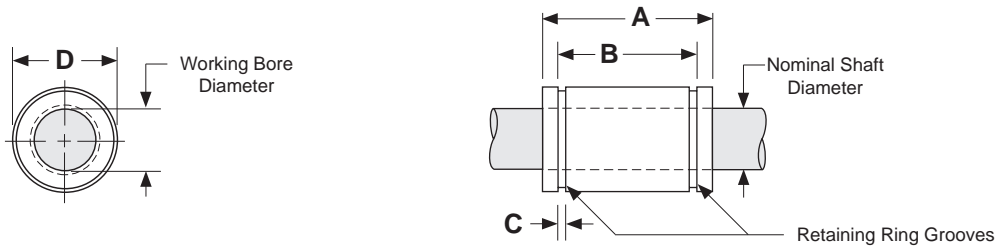
- No seals
- S** - Seals at both ends

## Specifications: LBCA & LBOA Linear Bearings

|  |   |                                 |   |   |  |
|--|---|---------------------------------|---|---|--|
| <b>Operating Temperature</b>               | 0° F to + 600° F (without seals)  |                                 | 0° F to + 185° F (with seals)               |   |  |
| <b>Maximum Speed</b>                       | 10 ft/second  |                                 |   |   |  |
| <b>Bearing Seals (optional)</b>            | Internal Wiper Seals on both ends, Plastic Bearing Retainer                 |                                 |   |   |  |
| <b>Matching Shaft</b>                      | Class S ( <b>SS</b> series), hardened & ground shafting (see pages 38 - 39) |                                 |   |   |  |
| <b>Housing Tolerances</b><br>C = clearance | <b>LBCA</b><br>(closed style)   |                                 |   | <b>LBOA</b><br>(open style)               |  |
|  | <b>Nominal Shaft Diameter</b><br>(inches)                                   | <b>Recommended Housing Bore</b> |   | <b>Nominal Shaft Diameter</b><br>(inches) | <b>Recommended Housing Bore</b><br>before adjustment<br>(inches) |
|  | Normal Fit<br>(inches)  | Press Fit<br>(inches)           | <b>Bearing and Shaft Fit-up</b><br>(inches) |   |  |
|  | 0.250   | .5005 / .5000                   | .4995 / .4990                               | .0015C / .0005C                           |  |
|  | 0.375   | .6255 / .6250                   | .6245 / .6240                               | .0015C / .0005C                           |  |
|  | 0.500   | .8755 / .8750                   | .8745 / .8740                               | .0015C / .0005C                           | 0.500 .8760 / .8740  |
|  | 0.625   | 1.1255 / 1.1250                 | 1.1245 / 1.1240                             | .0015C / .0005C                           | 0.625 1.1260 / 1.1240  |
|  | 0.750   | 1.2505 / 1.2500                 | 1.2495 / 1.2490                             | .0015C / .0005C                           | 0.750 1.2510 / 1.2490  |
|  | 1.000   | 1.5630 / 1.5625                 | 1.5620 / 1.5615                             | .0015C / .0005C                           | 1.000 1.5635 / 1.5615  |
|  | 1.250   | 2.0010 / 2.0000                 | 1.9993 / 1.9983                             | .0015C / .0004C                           | 1.250 2.0010 / 1.9990  |
|  | 1.500   | 2.3760 / 2.3750                 | 2.3743 / 2.3733                             | .0016C / .0005C                           | 1.500 2.3760 / 2.3740  |
|  | 2.000   | 3.0010 / 3.0000                 | 2.9992 / 2.9982                             | .0020C / .0005C                           | 2.000 3.0010 / 2.9990  |

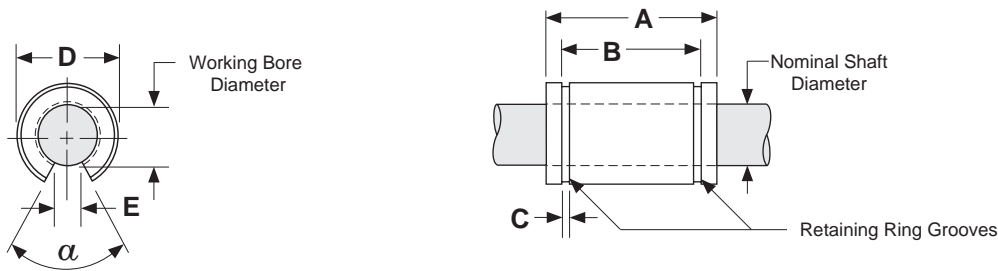
Dimensions & Specifications: **LBCA** Precision Linear Bearing (closed)

| Model Number  |                              | Nominal Shaft Diameter<br>(inches) | Working Bore Diameter<br>(inches) | Dyn. <sup>(1)</sup><br>Load Capacity<br>(lbs) | Dimensions<br>(inches) |             |       |               | Bearing Weight<br>(lbs) |
|---------------|------------------------------|------------------------------------|-----------------------------------|---|------------------------|-------------|-------|---------------|-------------------------|
| Without Seals | With <sup>(2)</sup><br>Seals |                                    |                                   |   | A                      | B           | C     | D             |                         |
| LBCA-4        | LBCA-4-S                     | 0.250                              | 0.2500/0.2495                     | 19  | 0.750/0.735            | 0.515/0.499 | 0.039 | 0.5000/0.4996 | 0.02                    |
| LBCA-6        | LBCA-6-S                     | 0.375                              | 0.3750/0.3745                     | 37  | 0.875/0.860            | 0.640/0.624 | 0.039 | 0.6250/0.6246 | 0.06                    |
| LBCA-8        | LBCA-8-S                     | 0.500                              | 0.5000/0.4995                     | 85  | 1.250/1.235            | 0.967/0.951 | 0.046 | 0.8750/0.8746 | 0.08                    |
| LBCA-10       | LBCA-10-S                    | 0.625                              | 0.6250/0.6245                     | 150   | 1.500/1.485            | 1.108/1.092 | 0.056 | 1.1250/1.1246 | 0.16                    |
| LBCA-12       | LBCA-12-S                    | 0.750                              | 0.7500/0.7495                     | 200   | 1.625/1.610            | 1.170/1.154 | 0.056 | 1.2500/1.2496 | 0.21                    |
| LBCA-16       | LBCA-16-S                    | 1.000                              | 1.0000/0.9995                     | 350   | 2.250/2.235            | 1.759/1.741 | 0.068 | 1.5625/1.5621 | 0.38                    |
| LBCA-20       | LBCA-20-S                    | 1.250                              | 1.2500/1.2494                     | 520   | 2.625/2.605            | 2.009/1.991 | 0.068 | 2.0000/1.9995 | 1.10                    |
| LBCA-24       | LBCA-24-S                    | 1.500                              | 1.5000/1.4994                     | 770   | 3.000/2.980            | 2.415/2.397 | 0.086 | 2.3750/2.3745 | 1.43                    |
| LBCA-32       | LBCA-32-S                    | 2.000                              | 2.0000/1.9992                     | 1,100   | 4.000/3.980            | 3.195/3.177 | 0.103 | 3.0000/2.9994 | 2.75                    |



Dimensions & Specifications: **LBOA** Precision Linear Bearing (open)

| Model Number  |                              | Nominal Shaft Dia.<br>(inches) | Working Bore Diameter<br>(inches) | Dyn. <sup>(1)</sup><br>Load Cap.<br>(lbs) | Dimensions<br>(inches) |             |       |               |                   | Bearing Weight<br>(lbs) | Angle<br>$\alpha$ |
|---------------|------------------------------|--------------------------------|-----------------------------------|---|------------------------|-------------|-------|---------------|-------------------|-------------------------|-------------------|
| Without Seals | With <sup>(2)</sup><br>Seals |                                |                                   |   | A                      | B           | C     | D             | E <sub>min.</sub> |                         |                   |
| LBOA-8        | LBOA-8-S                     | 0.500                          | 0.5005/0.4995                     | 60  | 1.250/1.235            | 0.967/0.951 | 0.046 | 0.8760/0.8746 | 0.31              | 0.07                    | 50°               |
| LBOA-10       | LBOA-10-S                    | 0.625                          | 0.6255/0.6245                     | 105                                       | 1.500/1.485            | 1.108/1.092 | 0.056 | 1.1260/1.1240 | 0.38              | 0.11                    | 60°               |
| LBOA-12       | LBOA-12-S                    | 0.750                          | 0.7505/0.7495                     | 140                                       | 1.625/1.610            | 1.170/1.154 | 0.056 | 1.2510/1.2490 | 0.44              | 0.17                    | 60°               |
| LBOA-16       | LBOA-16-S                    | 1.000                          | 1.0005/0.9995                     | 240                                       | 2.250/2.235            | 1.759/1.741 | 0.068 | 1.5635/1.5615 | 0.56              | 0.32                    | 60°               |
| LBOA-20       | LBOA-20-S                    | 1.250                          | 1.2506/1.2494                     | 400                                       | 2.625/2.605            | 2.009/1.991 | 0.068 | 2.0010/1.9990 | 0.63              | 0.90                    | 50°               |
| LBOA-24       | LBOA-24-S                    | 1.500                          | 1.5006/1.4994                     | 600                                       | 3.000/2.980            | 2.415/2.397 | 0.086 | 2.3760/2.3740 | 0.75              | 1.12                    | 50°               |
| LBOA-32       | LBOA-32-S                    | 2.000                          | 2.0008/1.9992                     | 860                                       | 4.000/3.980            | 3.195/3.177 | 0.103 | 3.0010/2.9990 | 1.00              | 2.16                    | 50°               |



Footnotes:

- (1) Rating based upon 2 million inches of travel with the load forces being applied downward on the linear bearing, while in a horizontal application, and based upon 1060 steel shafting (Rockwell 60C). The actual load rating, and life, is dependent upon factors detailed on pages 6 to 11.
- (2) The bearing retainer is plastic when the internal -S seal option is selected.



**LBC** - **10** - **S**

**Linear Bearing Series**

**LBC** - One Linear Bearing Closed

**LBO** - One Linear Bearing Open

**Nominal Diameter**

- 4** - 0.250 inch diameter
- 6** - 0.375 inch diameter
- 8** - 0.500 inch diameter
- 10** - 0.625 inch diameter
- 12** - 0.750 inch diameter
- 16** - 1.000 inch diameter
- 20** - 1.250 inch diameter
- 24** - 1.500 inch diameter
- 32** - 2.000 inch diameter

**Bearing Options**

- No seals or corrosion resistance
- S** - Seals at both ends
- CR** - Corrosion Resistant without seals

## Specifications: **LBC** & **LBO** Linear Bearings (self-aligning)

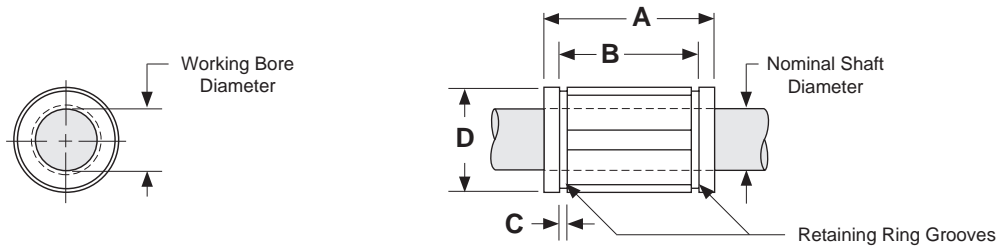
| <b>Operating Temperature</b>                              | 0° F to + 185° F  |                           |                                |  |                                |
|---|---|---------------------------|--------------------------------|--|--------------------------------|
| <b>Maximum Speed</b>                                      | 9 ft/second   |                           |                                |  |                                |
| <b>Bearing Seals</b>                                      | Optional Internal Wiper Seals on both ends                                  |                           |                                |  |                                |
| <b>Matching Shaft</b>                                     | Class L ( <b>SL</b> series), hardened & ground shafting (see pages 38 - 39) |                           |                                |  |                                |
| <b>Housing Tolerances</b><br>C = clearance<br>P = preload | Nominal Shaft Diameter<br>(inches)  | Recommended Housing Bore  |                                | Bearing and Shaft Fit-up <sup>(1)</sup><br>(before adjustment) |                                |
|   |   | Fixed Housing<br>(inches) | Adjustable Housing<br>(inches) | Fixed Housing<br>(inches)                                      | Adjustable Housing<br>(inches) |
|   | 0.250   | .5005 / .5000             | .5010 / .5000                  | .0015C / .0000   | .002C / .0000                  |
|   | 0.375   | .6255 / .6250             | .6260 / .6250                  | .0015C / .0000   | .002C / .0000                  |
|   | 0.500   | .8755 / .8750             | .8760 / .8750                  | .0015C / .0000   | .002C / .0000                  |
|   | 0.625   | 1.1255 / 1.1250           | 1.1260 / 1.1250                | .0015C / .0000   | .002C / .0000                  |
|   | 0.750   | 1.2505 / 1.2500           | 1.2510 / 1.2500                | .0015C / .0000   | .002C / .0000                  |
|   | 1.000   | 1.5630 / 1.5625           | 1.5635 / 1.5625                | .0015C / .0000   | .002C / .0000                  |
|   | 1.250   | 2.0008 / 2.0000           | 2.0010 / 2.0000                | .0018C / .0001P  | .002C / .0000                  |
|   | 1.500   | 2.3760 / 2.3750           | 2.3760 / 2.3750                | .0021C / .0000   | .0021C / .0000                 |
| 2.000   | 3.0010 / 3.0000   | 3.0010 / 3.0000           | .0023C / .0002P                | .0023C / .0002P  |                                |

**Footnotes:**

(1) Adjustable Housing Diameter (before adjustment) for LBO-20 is .002C/.0001P.

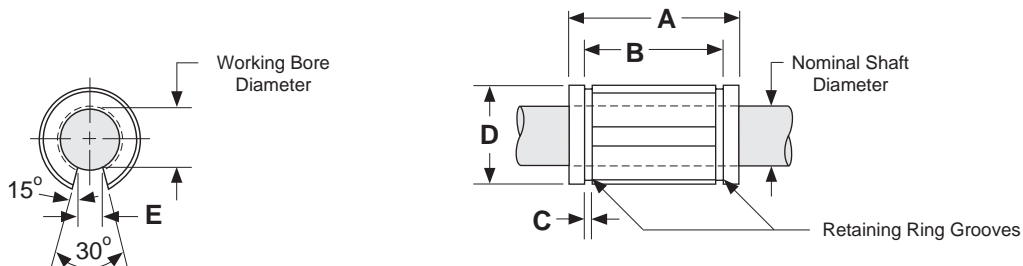
## Dimensions & Specifications: **LBC** Linear Bearing (closed)

| Model Number  |               | Nominal Shaft Diameter (inches) | Dyn. <sup>(1)</sup> Load Capacity (lbs) | Working Bore Diameter (inches) | Housing Bore <sup>(2)</sup> D (inches) | Dimensions (inches) |             |       | Bearing Weight (lbs) |
|---------------|---------------|---------------------------------|---|--------------------------------|--|---------------------|-------------|-------|----------------------|
| Without Seals | With Seals    |                                 |   |                                |  | A                   | B           | C     |                      |
| LBC-4         | LBC-4-S       | 0.250                           | 60                                      | 0.2500/0.2495                  | 0.5005/0.5000                          | 0.750/0.735         | 0.511/0.501 | 0.039 | 0.01                 |
| LBC-6         | LBC-6-S       | 0.375                           | 105                                     | 0.3750/0.3745                  | 0.6255/0.6250                          | 0.875/0.860         | 0.699/0.689 | 0.039 | 0.02                 |
| LBC-8         | LBC-8-S       | 0.500                           | 265                                     | 0.5000/0.4995                  | 0.8755/0.8750                          | 1.250/1.230         | 1.032/1.012 | 0.050 | 0.04                 |
| LBC-10        | LBC-10-S      | 0.625                           | 420                                     | 0.6250/0.6245                  | 1.1255/1.1250                          | 1.500/1.480         | 1.105/1.095 | 0.056 | 0.10                 |
| LBC-12        | LBC-12-S      | 0.750                           | 640                                     | 0.7500/0.7495                  | 1.2505/1.2500                          | 1.625/1.605         | 1.270/1.250 | 0.056 | 0.14                 |
| LBC-16        | LBC-16-S      | 1.000                           | 1,045                                   | 1.0000/0.9995                  | 1.5630/1.5625                          | 2.250/2.230         | 1.884/1.864 | 0.068 | 0.25                 |
| LBC-20        | LBC-20-S      | 1.250                           | 1,585                                   | 1.2500/1.2494                  | 2.0008/2.0000                          | 2.625/2.600         | 2.004/1.984 | 0.068 | 0.45                 |
| LBC-24        | LBC-24-S      | 1.500                           | 1,930                                   | 1.5000/1.4994                  | 2.3760/2.3750                          | 3.000/2.970         | 2.410/2.390 | 0.086 | 0.85                 |
| LBC-32        | not available | 2.000                           | 3,000                                   | 2.0000/1.9992                  | 3.0010/3.0000                          | 4.000/3.960         | 3.193/3.163 | 0.105 | 1.45                 |



## Dimensions & Specifications: **LBO** Linear Bearing (open)

| Model Number  |               | Nominal Shaft Diameter (inches) | Dyn. <sup>(1)</sup> Load Capacity (lbs) | Working Bore Diameter (inches) | Housing Bore <sup>(2)</sup> D (inches) | Dimensions (inches) |             |       |        | Bearing Weight (lbs) |
|---------------|---------------|---------------------------------|---|--------------------------------|--|---------------------|-------------|-------|--------|----------------------|
| Without Seals | With Seals    |                                 |   |                                |  | A                   | B           | C     | E min. |                      |
| LBO-8         | LBO-8-S       | 0.500                           | 230                                     | 0.5000/0.4995                  | 0.8755/0.8750                          | 1.250/1.230         | 1.032/1.012 | 0.050 | 0.312  | 0.04                 |
| LBO-10        | LBO-10-S      | 0.625                           | 320                                     | 0.6250/0.6245                  | 1.1255/1.1250                          | 1.500/1.480         | 1.105/1.095 | 0.056 | 0.375  | 0.08                 |
| LBO-12        | LBO-12-S      | 0.750                           | 470                                     | 0.7500/0.7495                  | 1.2505/1.2500                          | 1.625/1.605         | 1.270/1.250 | 0.056 | 0.437  | 0.12                 |
| LBO-16        | LBO-16-S      | 1.000                           | 780                                     | 1.0000/0.9995                  | 1.5630/1.5625                          | 2.250/2.230         | 1.884/1.864 | 0.068 | 0.562  | 0.21                 |
| LBO-20        | LBO-20-S      | 1.250                           | 1,170                                   | 1.2500/1.2494                  | 2.0008/2.0000                          | 2.625/2.600         | 2.004/1.984 | 0.068 | 0.625  | 0.38                 |
| LBO-24        | LBO-24-S      | 1.500                           | 1,560                                   | 1.5000/1.4994                  | 2.3760/2.3750                          | 3.000/2.970         | 2.410/2.390 | 0.086 | 0.750  | 0.71                 |
| LBO-32        | not available | 2.000                           | 2,350                                   | 2.0000/1.9992                  | 3.0010/3.0000                          | 4.000/3.960         | 3.193/3.163 | 0.105 | 1.000  | 1.20                 |



### Footnotes:

- (1) Rating based upon 2 million inches of travel with the load forces being applied downward on the linear bearing, while in a horizontal application, and based upon 1060 steel shafting (Rockwell 60C). The actual load rating, and life, is dependent upon factors detailed on pages 6 to 11.
- (2) This specification is based upon the bearing being on the shaft. Refer to page 38 for additional details.



**LBCM** - **16** - **S**

**Linear Bearing Closed Metric**

**LBCM** - Asian Style Super Metric Bearing Closed

**LBOM** - Asian Style Super Metric Bearing Open

**Nominal Diameter**

**16** - 16 mm diameter

**20** - 20 mm diameter

**25** - 25 mm diameter

**30** - 30 mm diameter

**40** - 40 mm diameter

**Bearing Options**

- No seals

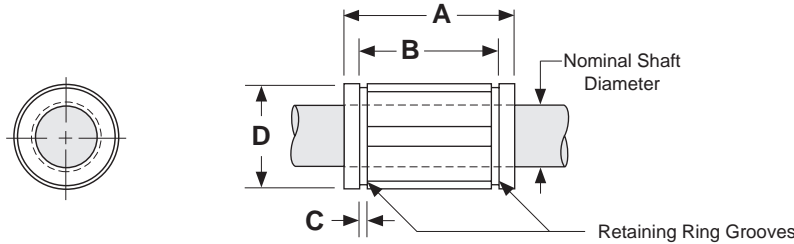
**S** - Seals at both ends

**Specifications: LBCM & LBOM Linear Bearings Metric (self-aligning)**

| <b>Operating Temperature</b>   | -17.8° C to +85° C   |                                |                                    |    |               |    |               |    |               |    |               |    |               |
|--------------------------------|--|--------------------------------|------------------------------------|----|---------------|----|---------------|----|---------------|----|---------------|----|---------------|
| <b>Maximum Speed</b>           | 2,74 meters/second   |                                |                                    |    |               |    |               |    |               |    |               |    |               |
| <b>Matching Shaft</b>          | Metric ( <b>SM</b> series), hardened & ground shafting (see pages 40 - 41)   |                                |                                    |    |               |    |               |    |               |    |               |    |               |
| <b>Housing Tolerances</b>      | <table border="1"> <thead> <tr> <th>Nominal Shaft Diameter<br/>(mm)</th> <th>Recommended Housing Bore D<br/>(mm)</th> </tr> </thead> <tbody> <tr> <td>16</td> <td>28,10 / 28,03</td> </tr> <tr> <td>20</td> <td>32,10 / 32,05</td> </tr> <tr> <td>25</td> <td>40,10 / 40,05</td> </tr> <tr> <td>30</td> <td>45,15 / 45,05</td> </tr> <tr> <td>40</td> <td>60,15 / 60,05</td> </tr> </tbody> </table> | Nominal Shaft Diameter<br>(mm) | Recommended Housing Bore D<br>(mm) | 16 | 28,10 / 28,03 | 20 | 32,10 / 32,05 | 25 | 40,10 / 40,05 | 30 | 45,15 / 45,05 | 40 | 60,15 / 60,05 |
| Nominal Shaft Diameter<br>(mm) | Recommended Housing Bore D<br>(mm)   |                                |                                    |    |               |    |               |    |               |    |               |    |               |
| 16                             | 28,10 / 28,03  |                                |                                    |    |               |    |               |    |               |    |               |    |               |
| 20                             | 32,10 / 32,05  |                                |                                    |    |               |    |               |    |               |    |               |    |               |
| 25                             | 40,10 / 40,05  |                                |                                    |    |               |    |               |    |               |    |               |    |               |
| 30                             | 45,15 / 45,05  |                                |                                    |    |               |    |               |    |               |    |               |    |               |
| 40                             | 60,15 / 60,05  |                                |                                    |    |               |    |               |    |               |    |               |    |               |

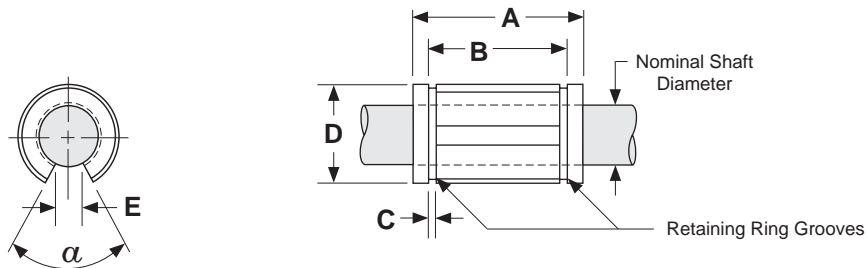
## Dimensions & Specifications: LBCM Linear Bearing Closed Metric (Asian Style)

| Model Number  |            | Nominal Shaft Diameter (mm) | Dynamic Load Capacity N (Kgf) | Housing Bore D (mm) | Dimensions (mm) |      |      | No. of Ball Tracks | Bearing Weight (kg) |
|---------------|------------|-----------------------------|-------------------------------|---------------------|-----------------|------|------|--------------------|---------------------|
| Without Seals | With Seals |                             |                               |                     | A               | B    | C    |                    |                     |
| LBCM-16       | LBCM-16-S  | 16                          | 1225 (119,9)                  | 28                  | 37              | 26,5 | 1,60 | 5                  | 0,034               |
| LBCM-20       | LBCM-20-S  | 20                          | 2303 (239,8)                  | 32                  | 42              | 30,5 | 1,60 | 6                  | 0,058               |
| LBCM-25       | LBCM-25-S  | 25                          | 4312 (459,6)                  | 40                  | 59              | 41,0 | 1,85 | 6                  | 0,120               |
| LBCM-30       | LBCM-30-S  | 30                          | 4802 (569,6)                  | 45                  | 64              | 44,5 | 1,85 | 6                  | 0,148               |
| LBCM-40       | LBCM-40-S  | 40                          | 9310 (949,3)                  | 60                  | 80              | 60,5 | 2,10 | 6                  | 0,314               |



## Dimensions & Specifications: LBOM Linear Bearing Open Metric (Asian Style)

| Model Number  |            | Nominal Shaft Diameter (mm) | Dynamic Load Capacity N (Kgf) | Housing Bore D (mm) | Dimensions (mm) |      |      |        | Angle $\alpha$  | No. of Ball Tracks | Bearing Weight (kg) |
|---------------|------------|-----------------------------|-------------------------------|---------------------|-----------------|------|------|--------|-----------------|--------------------|---------------------|
| Without Seals | With Seals |                             |                               |                     | A               | B    | C    | E min. |                 |                    |                     |
| LBOM-16       | LBOM-16-S  | 16                          | 1372 (139,9)                  | 28                  | 37              | 26,5 | 1,60 | 11,0   | 60 <sup>0</sup> | 4                  | 0,026               |
| LBOM-20       | LBOM-20-S  | 20                          | 2332 (237,8)                  | 32                  | 42              | 30,5 | 1,60 | 11,0   | 60 <sup>0</sup> | 5                  | 0,048               |
| LBOM-25       | LBOM-25-S  | 25                          | 4351 (443,7)                  | 40                  | 59              | 41,0 | 1,85 | 12,5   | 60 <sup>0</sup> | 5                  | 0,100               |
| LBOM-30       | LBOM-30-S  | 30                          | 4851 (494,7)                  | 45                  | 64              | 44,5 | 1,85 | 15,0   | 60 <sup>0</sup> | 5                  | 0,122               |
| LBOM-40       | LBOM-40-S  | 40                          | 9408 (959,3)                  | 60                  | 80              | 60,5 | 2,15 | 20,0   | 60 <sup>0</sup> | 5                  | 0,260               |



### Footnotes:

- (1) Rating based upon 50 km of travel with the load forces being applied downward on the linear bearing, while in a horizontal application, and based upon 1060 steel shafting (Rockwell 60C).
- (2) This specification is based upon the bearing being on the shaft.

# Ordering Guide - Self-Aligning Metric (European Style) - LBCME & LBOME Series



**LBCME** - **16** - **S**

**Linear Bearing Closed Metric**

**LBCME** - European ISO Super Metric Bearing Closed

**LBOME** - European ISO Super Metric Bearing Open

**Nominal Diameter**

**16** - 16 mm diameter

**20** - 20 mm diameter

**25** - 25 mm diameter

**30** - 30 mm diameter

**40** - 40 mm diameter

**50** - 50 mm diameter

**Bearing Options**

- No seals

**S** - Seals at both ends

## Specifications: **LBCME** & **LBOME** Linear Bearings Metric (self-aligning)

|                              |  |                                   |
|------------------------------|--|-----------------------------------|
| <b>Operating Temperature</b> | -17.8° C to +85° C   |                                   |
| <b>Maximum Speed</b>         | 2,74 meters/second   |                                   |
| <b>Matching Shaft</b>        | Metric ( <b>SM</b> series), hardened & ground shafting (see pages 40 - 41) |                                   |
| <b>Housing Tolerances</b>    | <b>Nominal Shaft Diameter</b>  | <b>Recommended Housing Bore D</b> |
|                              | (mm)   | (mm)                              |
|                              | 16   | 26,10 / 26,03                     |
|                              | 20   | 32,10 / 32,05                     |
|                              | 25   | 40,10 / 40,05                     |
|                              | 30   | 47,15 / 47,05                     |
|                              | 40   | 62,15 / 62,05                     |
| 50                           | 75,20 / 75,02  |                                   |

Sold & Serviced By:

 **ELECTROMATE**

Toll Free Phone (877) SERV098

Toll Free Fax (877) SERV099

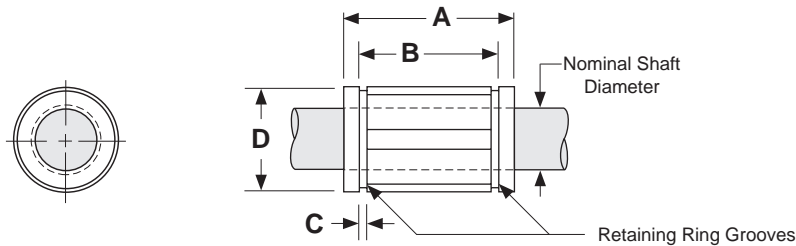
[www.electromate.com](http://www.electromate.com)

[sales@electromate.com](mailto:sales@electromate.com)

# Technical Reference - Self-Aligning Metric (European Style) - LBCME & LBOME Series

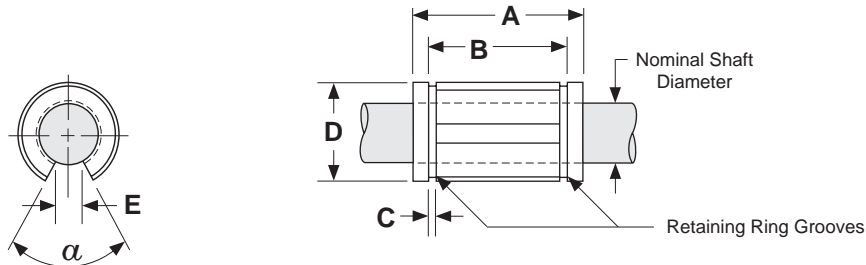
## Dimensions & Specifications: **LBCME** Linear Bearing Closed Metric (European Style)

| Model Number  |            | Nominal Shaft Diameter<br>(mm) | Dynamic Load Capacity<br>N (Kgf) | Housing Bore D<br>(mm) | Dimensions<br>(mm) |      |      | No. of Ball Tracks | Bearing Weight<br>(kg) |
|---------------|------------|--------------------------------|----------------------------------|------------------------|--------------------|------|------|--------------------|------------------------|
| Without Seals | With Seals |                                |                                  |                        | A                  | B    | C    |                    |                        |
| LBCME-16      | LBCME-16-S | 16                             | 1176 (119,9)                     | 26                     | 36                 | 24,6 | 1,30 | 5                  | 0,026                  |
| LBCME-20      | LBCME-20-S | 20                             | 2352 (239,8)                     | 32                     | 45                 | 31,2 | 1,60 | 6                  | 0,060                  |
| LBCME-25      | LBCME-25-S | 25                             | 4508 (459,6)                     | 40                     | 58                 | 43,7 | 1,85 | 6                  | 0,120                  |
| LBCME-30      | LBCME-30-S | 30                             | 5586 (569,6)                     | 47                     | 68                 | 51,7 | 1,85 | 6                  | 0,184                  |
| LBCME-40      | LBCME-40-S | 40                             | 9310 (949,3)                     | 62                     | 80                 | 60,3 | 2,15 | 6                  | 0,342                  |
| LBCME-50      | LBCME-50-S | 50                             | 13720 (1399,0)                   | 75                     | 100                | 77,3 | 2,65 | 6                  | 0,586                  |



## Dimensions & Specifications: **LBOME** Linear Bearing Open Metric (European Style)

| Model Number  |            | Nominal Shaft Diameter<br>(mm) | Dynamic Load Capacity<br>N (Kgf) | Housing Bore D<br>(mm) | Dimensions<br>(mm) |      |      |           | Angle<br>$\alpha$ | No. of Ball Tracks | Bearing Weight<br>(kg) |
|---------------|------------|--------------------------------|----------------------------------|------------------------|--------------------|------|------|-----------|-------------------|--------------------|------------------------|
| Without Seals | With Seals |                                |                                  |                        | A                  | B    | C    | E<br>min. |                   |                    |                        |
| LBOME-16      | LBOME-16-S | 16                             | 1332 (135,8)                     | 26                     | 36                 | 24,6 | 1,30 | 9,0       | 68 <sup>0</sup>   | 4                  | 0,020                  |
| LBOME-20      | LBOME-20-S | 20                             | 2371 (241,8)                     | 32                     | 45                 | 31,2 | 1,60 | 9,0       | 55 <sup>0</sup>   | 5                  | 0,050                  |
| LBOME-25      | LBOME-25-S | 25                             | 4557 (464,7)                     | 40                     | 58                 | 43,7 | 1,85 | 11,5      | 57 <sup>0</sup>   | 5                  | 0,100                  |
| LBOME-30      | LBOME-30-S | 30                             | 5644 (575,5)                     | 47                     | 68                 | 51,7 | 1,85 | 14,0      | 57 <sup>0</sup>   | 5                  | 0,154                  |
| LBOME-40      | LBOME-40-S | 40                             | 9398 (958,3)                     | 62                     | 80                 | 60,3 | 2,15 | 19,5      | 56 <sup>0</sup>   | 5                  | 0,286                  |
| LBOME-50      | LBOME-50-S | 50                             | 13857 (1413,0)                   | 75                     | 100                | 77,3 | 2,65 | 22,5      | 54 <sup>0</sup>   | 5                  | 0,486                  |



### Footnotes:

- (1) Rating based upon 50 km of travel with the load forces being applied downward on the linear bearing, while in a horizontal application, and based upon 1060 steel shafting (Rockwell 60C).
- (2) This specification is based upon the bearing being on the shaft.

Sold & Serviced By:

**ELECTROMATE**

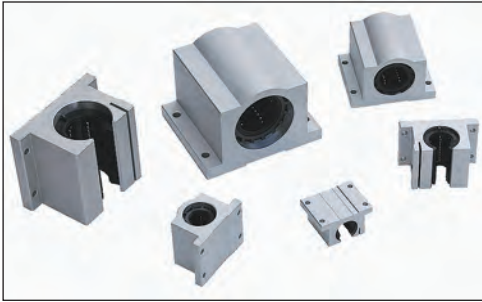
Toll Free Phone (877) SERV098

Toll Free Fax (877) SERV099

www.electromate.com

sales@electromate.com





**SLBC** - **10** - **CR** - **L**

**Pillow Block Series** \_\_\_\_\_

- SLBC** - One LBC bearing per pillow block
- DLBC** - Two LBC bearings per pillow block
- SLBO** - One LBO bearing per pillow block
- DLBO** - Two LBO bearings per pillow block

**Nominal Diameter** \_\_\_\_\_

- 8** - 0.500 inch diameter
- 10** - 0.625 inch diameter
- 12** - 0.750 inch diameter
- 16** - 1.000 inch diameter
- 20** - 1.250 inch diameter
- 24** - 1.500 inch diameter
- 32** - 2.000 inch diameter (only in SLBC & SLBO style)

**Bearing Options** \_\_\_\_\_

- Standard
- CR** - Corrosion resistant

**Bearing Lock** \_\_\_\_\_

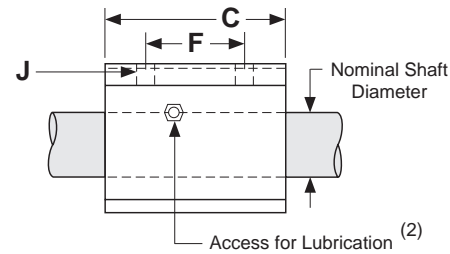
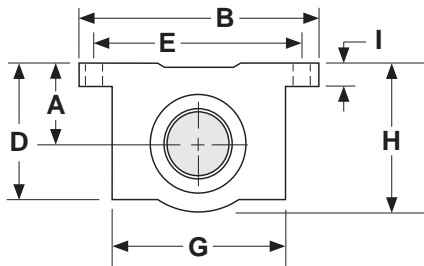
- None
- L** - Hand wheel lock

## Specifications: **SLBC, SLBO, DLBC & DLBO** Pillow Blocks (self-aligning)

| <b>Bearing Housing Type &amp; Finish</b> | Aluminum 6061-T6 Pillow Block, Clear Anodized   |                                    |                                      |       |               |       |               |       |               |       |               |       |                 |       |                 |       |                 |  |
|--|---|------------------------------------|--------------------------------------|-------|---------------|-------|---------------|-------|---------------|-------|---------------|-------|-----------------|-------|-----------------|-------|-----------------|--|
| <b>Bearing Seals</b>                     | Internal Wiper Seals on Both Ends   |                                    |                                      |       |               |       |               |       |               |       |               |       |                 |       |                 |       |                 |  |
| <b>Operating Temperature</b>             | 0° F to + 185° F  |                                    |                                      |       |               |       |               |       |               |       |               |       |                 |       |                 |       |                 |  |
| <b>Maximum Speed</b>                     | 9 ft/second   |                                    |                                      |       |               |       |               |       |               |       |               |       |                 |       |                 |       |                 |  |
| <b>Matching Shaft</b>                    | Class L ( <b>SL</b> series), hardened & ground shafting (see pages 38 - 39)   |                                    |                                      |       |               |       |               |       |               |       |               |       |                 |       |                 |       |                 |  |
| <b>Diameter Tolerance</b>                | <table border="1"> <thead> <tr> <th>Nominal Shaft Diameter<br/>(inches)</th> <th>Shaft Diameter Tolerance<br/>(inches)</th> </tr> </thead> <tbody> <tr> <td>0.500</td> <td>.4995 / .4990</td> </tr> <tr> <td>0.625</td> <td>.6245 / .6240</td> </tr> <tr> <td>0.750</td> <td>.7495 / .7490</td> </tr> <tr> <td>1.000</td> <td>.9995 / .9990</td> </tr> <tr> <td>1.250</td> <td>1.2495 / 1.2490</td> </tr> <tr> <td>1.500</td> <td>1.4994 / 1.4989</td> </tr> <tr> <td>2.000</td> <td>1.9994 / 1.9987</td> </tr> </tbody> </table> | Nominal Shaft Diameter<br>(inches) | Shaft Diameter Tolerance<br>(inches) | 0.500 | .4995 / .4990 | 0.625 | .6245 / .6240 | 0.750 | .7495 / .7490 | 1.000 | .9995 / .9990 | 1.250 | 1.2495 / 1.2490 | 1.500 | 1.4994 / 1.4989 | 2.000 | 1.9994 / 1.9987 |  |
| Nominal Shaft Diameter<br>(inches)       | Shaft Diameter Tolerance<br>(inches)  |                                    |                                      |       |               |       |               |       |               |       |               |       |                 |       |                 |       |                 |  |
| 0.500                                    | .4995 / .4990   |                                    |                                      |       |               |       |               |       |               |       |               |       |                 |       |                 |       |                 |  |
| 0.625                                    | .6245 / .6240   |                                    |                                      |       |               |       |               |       |               |       |               |       |                 |       |                 |       |                 |  |
| 0.750                                    | .7495 / .7490   |                                    |                                      |       |               |       |               |       |               |       |               |       |                 |       |                 |       |                 |  |
| 1.000                                    | .9995 / .9990   |                                    |                                      |       |               |       |               |       |               |       |               |       |                 |       |                 |       |                 |  |
| 1.250                                    | 1.2495 / 1.2490   |                                    |                                      |       |               |       |               |       |               |       |               |       |                 |       |                 |       |                 |  |
| 1.500                                    | 1.4994 / 1.4989   |                                    |                                      |       |               |       |               |       |               |       |               |       |                 |       |                 |       |                 |  |
| 2.000                                    | 1.9994 / 1.9987   |                                    |                                      |       |               |       |               |       |               |       |               |       |                 |       |                 |       |                 |  |

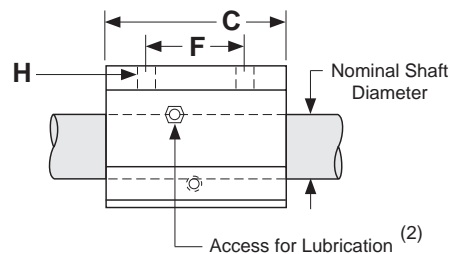
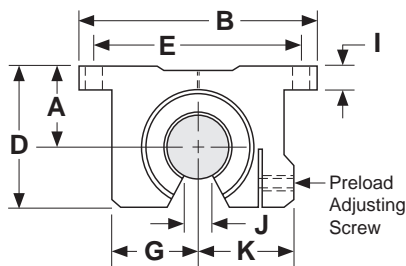
## Dimensions & Specifications: **SLBC** Single Linear Bearing Closed Pillow Block (self-aligning)

| Model Number | Nominal Shaft Diameter (inches) | Dyn. Load Capacity (lbs) | Dimensions (inches) |      |      |      |          |          |      |      |     |      |      | Block Weight (lbs) |
|--------------|---------------------------------|--------------------------|---------------------|------|------|------|----------|----------|------|------|-----|------|------|--------------------|
|              |                                 |                          | A                   | B    | C    | D    | E        | F        | G    | H    | I   | J    |      |                    |
|              |                                 |                          | +/- .003            |      |      |      | +/- .010 | +/- .010 |      |      |     | hole | bolt |                    |
| SLBC-8       | 0.500                           | 265                      | 0.687               | 2.00 | 1.69 | 1.13 | 1.688    | 1.000    | 1.38 | 1.25 | .25 | .16  | # 6  | 0.20               |
| SLBC-10      | 0.625                           | 420                      | 0.875               | 2.50 | 1.94 | 1.44 | 2.125    | 1.125    | 1.75 | 1.63 | .28 | .19  | # 8  | 0.50               |
| SLBC-12      | 0.750                           | 640                      | 0.937               | 2.75 | 2.06 | 1.56 | 2.375    | 1.250    | 1.88 | 1.75 | .31 | .19  | # 8  | 0.60               |
| SLBC-16      | 1.000                           | 1,045                    | 1.187               | 3.25 | 2.81 | 1.94 | 2.875    | 1.750    | 2.38 | 2.19 | .38 | .22  | #10  | 1.20               |
| SLBC-20      | 1.250                           | 1,585                    | 1.500               | 4.00 | 3.63 | 2.50 | 3.500    | 2.000    | 3.00 | 2.81 | .44 | .22  | #10  | 2.50               |
| SLBC-24      | 1.500                           | 1,930                    | 1.750               | 4.75 | 4.00 | 2.88 | 4.125    | 2.500    | 3.50 | 3.25 | .50 | .28  | 1/4  | 3.80               |
| SLBC-32      | 2.000                           | 3,000                    | 2.125               | 6.00 | 5.00 | 3.63 | 5.250    | 3.250    | 4.50 | 4.06 | .63 | .41  | 3/8  | 7.00               |



## Dimensions & Specifications: **SLBO** Single Linear Bearing Open Pillow Block (self-aligning)

| Model Number | Nominal Shaft Diameter (inches) | Dyn. Load Capacity (lbs) | Dimensions (inches) |      |      |      |          |          |      |      |      |     |      |      |      | Block Weight (lbs) |
|--------------|---------------------------------|--------------------------|---------------------|------|------|------|----------|----------|------|------|------|-----|------|------|------|--------------------|
|              |                                 |                          | A                   | B    | C    | D    | E        | F        | G    | H    |      | I   | J    | K    |      |                    |
|              |                                 |                          | +/- .003            |      |      |      | +/- .010 | +/- .010 |      | hole | bolt |     | min. |      |      |                    |
| SLBO-8       | 0.500                           | 230                      | 0.687               | 2.00 | 1.50 | 1.13 | 1.688    | 1.000    | 0.69 | .16  | # 6  | .25 | 0.31 | 0.75 | 0.20 |                    |
| SLBO-10      | 0.625                           | 320                      | 0.875               | 2.50 | 1.75 | 1.44 | 2.125    | 1.125    | 0.88 | .19  | # 8  | .28 | 0.37 | 0.94 | 0.40 |                    |
| SLBO-12      | 0.750                           | 470                      | 0.937               | 2.75 | 1.88 | 1.56 | 2.375    | 1.250    | 0.94 | .19  | # 8  | .31 | 0.43 | 1.00 | 0.50 |                    |
| SLBO-16      | 1.000                           | 780                      | 1.187               | 3.25 | 2.63 | 2.00 | 2.875    | 1.750    | 1.19 | .22  | #10  | .38 | 0.56 | 1.25 | 1.00 |                    |
| SLBO-20      | 1.250                           | 1,170                    | 1.500               | 4.00 | 3.38 | 2.56 | 3.500    | 2.000    | 1.50 | .22  | #10  | .44 | 0.62 | 1.63 | 2.10 |                    |
| SLBO-24      | 1.500                           | 1,560                    | 1.750               | 4.75 | 3.75 | 2.94 | 4.125    | 2.500    | 1.75 | .28  | 1/4  | .50 | 0.75 | 1.88 | 3.20 |                    |
| SLBO-32      | 2.000                           | 2,350                    | 2.125               | 6.00 | 4.75 | 3.63 | 5.250    | 3.250    | 2.25 | .41  | 3/8  | .63 | 1.00 | 2.44 | 6.00 |                    |

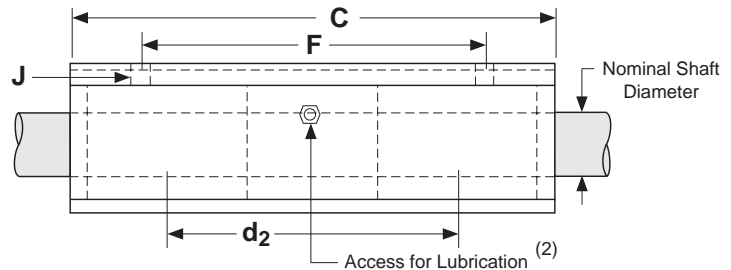
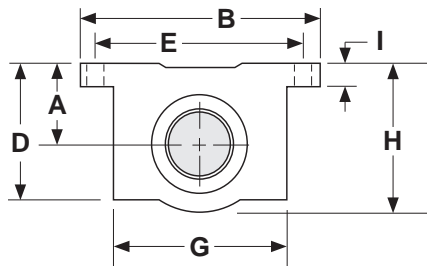


### Footnotes:

- (1) Rating based upon 2 million inches of travel with the load forces being applied downward on the linear bearing, while in a horizontal application, and based upon 1060 steel shafting (Rockwell 60C). The actual load rating, and life, is dependent upon factors detailed on pages 6 to 11.
- (2) Size 0.500 has oil lubricant fitting. Sizes 0.625 and above have a 1/4-28 UNF straight thread access for lubrication.

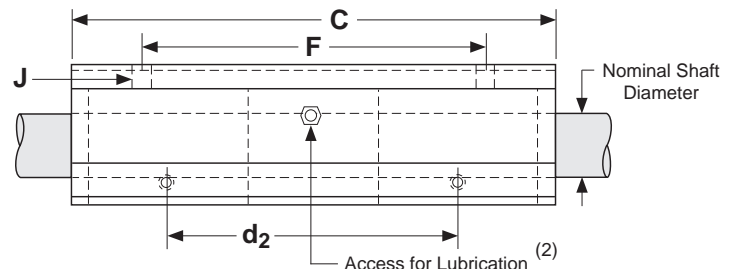
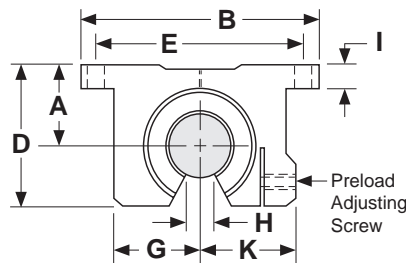
## Dimensions & Specifications: **DLBC** Double Linear Bearing Closed Pillow Block (self-aligning)

| Model Number   | Nominal Shaft Diameter (inches) | Dyn. Load Capacity (1) (lbs) | Dimensions (inches) |      |      |      |          |          |      |      |     |     |      | Block Weight (lbs) |                    |
|----------------|---------------------------------|------------------------------|---------------------|------|------|------|----------|----------|------|------|-----|-----|------|--------------------|--------------------|
|                |                                 |                              | A                   | B    | C    | D    | E        | F        | G    | H    | I   | J   |      |                    | d <sub>2</sub> (3) |
|                |                                 |                              | +/- .003            |      |      |      | +/- .010 | +/- .010 |      |      |     |     | hole |                    |                    |
| <b>DLBC-8</b>  | 0.500                           | 510                          | 0.687               | 2.00 | 3.50 | 1.13 | 1.688    | 2.500    | 1.38 | 1.25 | .25 | .16 | # 6  | 1.75               | 0.40               |
| <b>DLBC-10</b> | 0.625                           | 900                          | 0.875               | 2.50 | 4.00 | 1.44 | 2.125    | 3.000    | 1.75 | 1.63 | .28 | .19 | # 8  | 2.00               | 1.00               |
| <b>DLBC-12</b> | 0.750                           | 1,200                        | 0.937               | 2.75 | 4.50 | 1.56 | 2.375    | 3.500    | 1.88 | 1.75 | .31 | .19 | # 8  | 2.25               | 1.20               |
| <b>DLBC-16</b> | 1.000                           | 2,100                        | 1.187               | 3.25 | 6.00 | 1.94 | 2.875    | 4.500    | 2.38 | 2.19 | .38 | .22 | #10  | 3.00               | 2.40               |
| <b>DLBC-20</b> | 1.250                           | 3,000                        | 1.500               | 4.00 | 7.50 | 2.50 | 3.500    | 5.500    | 3.00 | 2.81 | .44 | .22 | #10  | 3.75               | 5.00               |
| <b>DLBC-24</b> | 1.500                           | 4,000                        | 1.750               | 4.75 | 9.00 | 2.88 | 4.125    | 6.500    | 3.50 | 3.25 | .50 | .28 | 1/4  | 4.50               | 7.80               |



## Dimensions & Specifications: **DLBO** Double Linear Bearing Pillow Block Open (self-aligning)

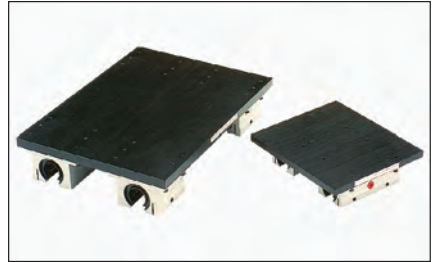
| Model Number   | Nominal Shaft Diameter (inches) | Dyn. Load Capacity (1) (lbs) | Dimensions (inches) |      |      |      |          |          |      |      |     |      |      |      |                    | Block Weight (lbs) |
|----------------|---------------------------------|------------------------------|---------------------|------|------|------|----------|----------|------|------|-----|------|------|------|--------------------|--------------------|
|                |                                 |                              | A                   | B    | C    | D    | E        | F        | G    | H    | I   | J    |      | K    | d <sub>2</sub> (3) |                    |
|                |                                 |                              | +/- .003            |      |      |      | +/- .010 | +/- .010 |      | min. |     | hole | bolt |      |                    |                    |
| <b>DLBO-8</b>  | 0.500                           | 460                          | 0.687               | 2.00 | 3.50 | 1.13 | 1.688    | 2.500    | 0.69 | .31  | .25 | .16  | # 6  | 0.75 | 1.75               | 0.40               |
| <b>DLBO-10</b> | 0.625                           | 640                          | 0.875               | 2.50 | 4.00 | 1.44 | 2.125    | 3.000    | 0.88 | .37  | .28 | .19  | # 8  | 0.94 | 2.00               | 0.80               |
| <b>DLBO-12</b> | 0.750                           | 940                          | 0.937               | 2.75 | 4.50 | 1.56 | 2.375    | 3.500    | 0.94 | .43  | .31 | .19  | # 8  | 1.00 | 2.25               | 1.00               |
| <b>DLBO-16</b> | 1.000                           | 1,560                        | 1.187               | 3.25 | 6.00 | 2.00 | 2.875    | 4.500    | 1.19 | .56  | .38 | .22  | #10  | 1.25 | 3.00               | 2.00               |
| <b>DLBO-20</b> | 1.250                           | 2,340                        | 1.500               | 4.00 | 7.50 | 2.56 | 3.500    | 5.500    | 1.50 | .62  | .44 | .22  | #10  | 1.63 | 3.75               | 4.20               |
| <b>DLBO-24</b> | 1.500                           | 3,120                        | 1.750               | 4.75 | 9.00 | 2.94 | 4.125    | 6.500    | 1.75 | .75  | .50 | .28  | 1/4  | 1.88 | 4.50               | 6.70               |



### Footnotes:

- (1) Rating based upon 2 million inches of travel with the load forces being applied downward on the linear bearing, while in a horizontal application, and based upon 1060 steel shafting (Rockwell 60C). The actual load rating, and life, is dependent upon factors detailed on pages 6 to 11.
- (2) Size 0.500 has oil lubricant fitting. Sizes 0.625 and above have a 1/4-28 UNF straight thread access for lubrication.
- (3) This value is the center to center distance (spacing) of the bearings on a single shaft (d<sub>2</sub>).

**TRCA** - **12** - **12** - **CR** - **P** - **L1**



**TWIN RAIL® Carriage Assembly series**

**TRCA** - Plate with mounted SLBO or DLBO

**Nominal Bearing Diameter**

- 8** - 0.500 inch diameter
- 10** - 0.625 inch diameter
- 12** - 0.750 inch diameter
- 16** - 1.000 inch diameter
- 20** - 1.250 inch diameter
- 24** - 1.500 inch diameter
- 32** - 2.000 inch diameter

**Carriage Plate Length**

- 6** - 6 inches
- 8** - 8 inches
- 12** - 12 inches
- 18** - 18 inches
- 24** - 24 inches
- 30** - 30 inches

**Bearing Options**

- Standard
- CR** - Corrosion resistant

**Carriage Plate Mounting**

- No Holes
- P** - Pre-Machined Mounting holes

**Bearing Lock**

- None
- Lx** - Hand wheel locks (x = number of locks - 1, 2, 3 or 4)

**Specifications: TRCA TWIN RAIL® Carriage Assembly**

| <b>Bearing Housing Type &amp; Finish</b> | Aluminum 6061-T6 Pillow Block, Clear Anodized   |                                    |                                      |       |               |       |               |       |               |       |               |       |                 |       |                 |       |                 |  |
|--|---|------------------------------------|--------------------------------------|-------|---------------|-------|---------------|-------|---------------|-------|---------------|-------|-----------------|-------|-----------------|-------|-----------------|--|
| <b>Bearing Seals</b>                     | Internal Wiper Seals on Both Ends   |                                    |                                      |       |               |       |               |       |               |       |               |       |                 |       |                 |       |                 |  |
| <b>Carriage Plate Type &amp; Finish</b>  | Machined Aluminum 6061-T6 Plate, Black Anodized   |                                    |                                      |       |               |       |               |       |               |       |               |       |                 |       |                 |       |                 |  |
| <b>Bearing Alignment on Plate</b>        | +/- 0.001", Pillow Blocks Doweled to Carriage Plate   |                                    |                                      |       |               |       |               |       |               |       |               |       |                 |       |                 |       |                 |  |
| <b>Operating Temperature</b>             | 0° F to + 185° F  |                                    |                                      |       |               |       |               |       |               |       |               |       |                 |       |                 |       |                 |  |
| <b>Maximum Speed</b>                     | 9 ft/second   |                                    |                                      |       |               |       |               |       |               |       |               |       |                 |       |                 |       |                 |  |
| <b>Matching Shaft Assembly</b>           | <b>TRSA</b> series (see page 47)  |                                    |                                      |       |               |       |               |       |               |       |               |       |                 |       |                 |       |                 |  |
| <b>Diameter Tolerance</b>                | <table border="1"> <thead> <tr> <th>Nominal Shaft Diameter<br/>(inches)</th> <th>Shaft Diameter Tolerance<br/>(inches)</th> </tr> </thead> <tbody> <tr> <td>0.500</td> <td>.4995 / .4990</td> </tr> <tr> <td>0.625</td> <td>.6245 / .6240</td> </tr> <tr> <td>0.750</td> <td>.7495 / .7490</td> </tr> <tr> <td>1.000</td> <td>.9995 / .9990</td> </tr> <tr> <td>1.250</td> <td>1.2495 / 1.2490</td> </tr> <tr> <td>1.500</td> <td>1.4994 / 1.4989</td> </tr> <tr> <td>2.000</td> <td>1.9994 / 1.9987</td> </tr> </tbody> </table> | Nominal Shaft Diameter<br>(inches) | Shaft Diameter Tolerance<br>(inches) | 0.500 | .4995 / .4990 | 0.625 | .6245 / .6240 | 0.750 | .7495 / .7490 | 1.000 | .9995 / .9990 | 1.250 | 1.2495 / 1.2490 | 1.500 | 1.4994 / 1.4989 | 2.000 | 1.9994 / 1.9987 |  |
| Nominal Shaft Diameter<br>(inches)       | Shaft Diameter Tolerance<br>(inches)  |                                    |                                      |       |               |       |               |       |               |       |               |       |                 |       |                 |       |                 |  |
| 0.500                                    | .4995 / .4990   |                                    |                                      |       |               |       |               |       |               |       |               |       |                 |       |                 |       |                 |  |
| 0.625                                    | .6245 / .6240   |                                    |                                      |       |               |       |               |       |               |       |               |       |                 |       |                 |       |                 |  |
| 0.750                                    | .7495 / .7490   |                                    |                                      |       |               |       |               |       |               |       |               |       |                 |       |                 |       |                 |  |
| 1.000                                    | .9995 / .9990   |                                    |                                      |       |               |       |               |       |               |       |               |       |                 |       |                 |       |                 |  |
| 1.250                                    | 1.2495 / 1.2490   |                                    |                                      |       |               |       |               |       |               |       |               |       |                 |       |                 |       |                 |  |
| 1.500                                    | 1.4994 / 1.4989   |                                    |                                      |       |               |       |               |       |               |       |               |       |                 |       |                 |       |                 |  |
| 2.000                                    | 1.9994 / 1.9987   |                                    |                                      |       |               |       |               |       |               |       |               |       |                 |       |                 |       |                 |  |

## Dimensions & Specifications: TRCA TWIN RAIL® Carriage Assembly

| Model Number | Nom. Shaft Dia. (inches) | Dyn. Load Cap. (lbs) | Dimensions (inches) |               |      |      |      |      |      |     |       |       |                               |                               |                               | Assembly Weight (lbs) |
|--------------|--------------------------|----------------------|---------------------|---------------|------|------|------|------|------|-----|-------|-------|-------------------------------|-------------------------------|-------------------------------|-----------------------|
|              |                          |                      | A<br>+/- .005       | B<br>+/- .005 | C    | D    | E    | F    | G    | H   | J     | K     | d <sub>r</sub> <sup>(2)</sup> | d <sub>1</sub> <sup>(3)</sup> | d <sub>2</sub> <sup>(4)</sup> |                       |
| TRCA8-6      | 0.500                    | 920                  | 6.00                | 5.50          | 1.25 | 0.75 | 0.68 | 1.12 | 2.00 | .25 | 3.50  | 0.375 | 1.062                         | 3.00                          | 1.90                          | 2.4                   |
| TRCA8-12     | 0.500                    | 920                  | 12.00               | 5.50          | 0.25 | 0.75 | 0.68 | 1.12 | 2.00 | .25 | 11.50 | 0.375 | 1.062                         | 3.00                          | 10.00                         | 4.6                   |
| TRCA8-18     | 0.500                    | 920                  | 18.00               | 5.50          | 0.25 | 0.75 | 0.68 | 1.12 | 2.00 | .25 | 17.50 | 0.375 | 1.062                         | 3.00                          | 16.00                         | 5.9                   |
| TRCA10-6     | 0.625                    | 1,280                | 6.00                | 6.75          | 1.00 | 0.93 | 0.87 | 1.43 | 2.50 | .25 | 4.00  | 0.375 | 1.250                         | 3.75                          | 2.15                          | 3.5                   |
| TRCA10-12    | 0.625                    | 1,280                | 12.00               | 6.75          | 0.25 | 0.93 | 0.87 | 1.43 | 2.50 | .25 | 11.50 | 0.375 | 1.250                         | 3.75                          | 9.75                          | 6.0                   |
| TRCA10-18    | 0.625                    | 1,280                | 18.00               | 6.75          | 0.25 | 0.93 | 0.87 | 1.43 | 2.50 | .25 | 17.50 | 0.375 | 1.250                         | 3.75                          | 15.75                         | 7.7                   |
| TRCA12-6     | 0.750                    | 1,880                | 6.00                | 7.75          | 0.75 | 1.00 | 0.93 | 1.56 | 2.75 | .25 | 4.50  | 0.500 | 1.437                         | 4.50                          | 2.50                          | 4.8                   |
| TRCA12-12    | 0.750                    | 1,880                | 12.00               | 7.75          | 0.25 | 1.00 | 0.93 | 1.56 | 2.75 | .25 | 11.49 | 0.500 | 1.437                         | 4.50                          | 9.62                          | 8.2                   |
| TRCA12-18    | 0.750                    | 1,880                | 18.00               | 7.75          | 0.25 | 1.00 | 0.93 | 1.56 | 2.75 | .25 | 17.49 | 0.500 | 1.437                         | 4.50                          | 15.62                         | 10.7                  |
| TRCA16-6     | 1.000                    | 3,120                | 6.00                | 9.00          | 0.00 | 1.25 | 1.18 | 2.00 | 3.25 | .25 | 6.00  | 0.500 | 1.687                         | 5.25                          | 3.25                          | 7.2                   |
| TRCA16-12    | 1.000                    | 3,120                | 12.00               | 9.00          | 0.25 | 1.25 | 1.18 | 2.00 | 3.25 | .25 | 11.49 | 0.500 | 1.687                         | 5.25                          | 8.87                          | 11.0                  |
| TRCA16-18    | 1.000                    | 3,120                | 18.00               | 9.00          | 0.25 | 1.25 | 1.18 | 2.00 | 3.25 | .25 | 17.49 | 0.500 | 1.687                         | 5.25                          | 14.87                         | 14.0                  |
| TRCA16-24    | 1.000                    | 3,120                | 24.00               | 9.00          | 0.25 | 1.25 | 1.18 | 2.00 | 3.25 | .25 | 23.49 | 0.500 | 1.687                         | 5.25                          | 20.87                         | 16.9                  |
| TRCA20-8     | 1.250                    | 4,680                | 8.00                | 10.50         | 0.25 | 1.62 | 1.50 | 2.56 | 4.00 | .25 | 7.50  | 0.750 | 2.250                         | 6.00                          | 3.90                          | 16.0                  |
| TRCA20-12    | 1.250                    | 4,680                | 12.00               | 10.50         | 0.25 | 1.62 | 1.50 | 2.56 | 4.00 | .25 | 11.49 | 0.750 | 2.250                         | 6.00                          | 8.12                          | 16.4                  |
| TRCA20-18    | 1.250                    | 4,680                | 18.00               | 10.50         | 0.25 | 1.62 | 1.50 | 2.56 | 4.00 | .25 | 17.49 | 0.750 | 2.250                         | 6.00                          | 14.12                         | 21.6                  |
| TRCA20-24    | 1.250                    | 4,680                | 24.00               | 10.50         | 0.25 | 1.62 | 1.50 | 2.56 | 4.00 | .25 | 23.49 | 0.750 | 2.250                         | 6.00                          | 20.12                         | 26.8                  |
| TRCA24-12    | 1.500                    | 6,240                | 12.00               | 12.00         | 1.50 | 1.87 | 1.75 | 2.93 | 4.75 | .31 | 9.00  | 1.000 | 2.750                         | 6.62                          | 5.00                          | 30.0                  |
| TRCA24-18    | 1.500                    | 6,240                | 18.00               | 12.00         | 0.25 | 1.87 | 1.75 | 2.93 | 4.75 | .31 | 17.50 | 1.000 | 2.750                         | 6.62                          | 13.75                         | 40.2                  |
| TRCA24-24    | 1.500                    | 6,240                | 24.00               | 12.00         | 0.25 | 1.87 | 1.75 | 2.93 | 4.75 | .31 | 23.50 | 1.000 | 2.750                         | 6.62                          | 19.75                         | 48.1                  |
| TRCA24-30    | 1.500                    | 6,240                | 30.00               | 12.00         | 0.25 | 1.87 | 1.75 | 2.93 | 4.75 | .31 | 29.50 | 1.000 | 2.750                         | 6.62                          | 25.75                         | 56.0                  |
| TRCA32-18    | 2.000                    | 9,400                | 18.00               | 14.00         | 0.25 | 2.43 | 2.25 | 3.62 | 6.00 | .37 | 17.50 | 1.250 | 3.375                         | 7.25                          | 12.75                         | 61.7                  |
| TRCA32-24    | 2.000                    | 9,400                | 24.00               | 14.00         | 0.25 | 2.43 | 2.25 | 3.62 | 6.00 | .37 | 23.50 | 1.250 | 3.375                         | 7.25                          | 18.75                         | 73.2                  |
| TRCA32-30    | 2.000                    | 9,400                | 30.00               | 14.00         | 0.25 | 2.43 | 2.25 | 3.62 | 6.00 | .37 | 29.50 | 1.250 | 3.375                         | 7.25                          | 24.75                         | 84.8                  |

### Footnotes:

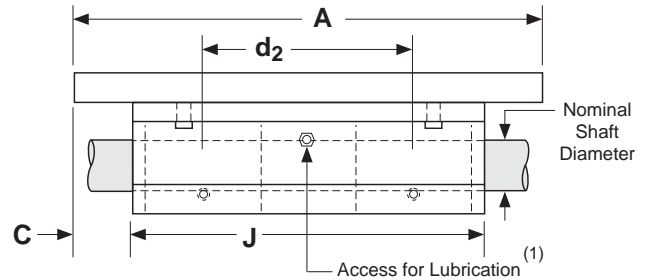
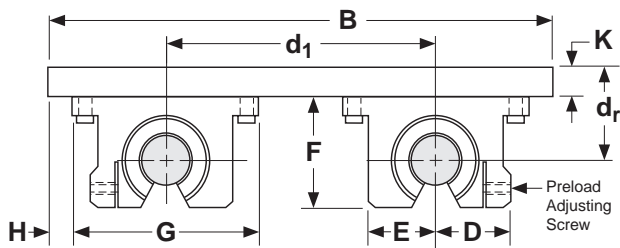
- (1) Rating based upon 2 million inches of travel with the load forces being applied downward on the linear bearing, while in a horizontal application, and based upon 1060 steel shafting (Rockwell 60C). The actual load rating, and life, is dependent upon factors detailed on pages 6 to 11.
- (2) This value is the center distance of the bearing to the top of the carriage plate surface (d<sub>r</sub>).
- (3) This value is the center to center distance (spread) between the rails (d<sub>1</sub>).
- (4) This value is the center to center distance (spacing) of the bearings on a single shaft (d<sub>2</sub>).

## Dimensions

(inches)

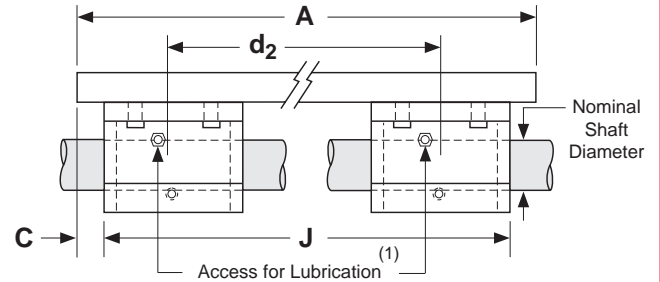
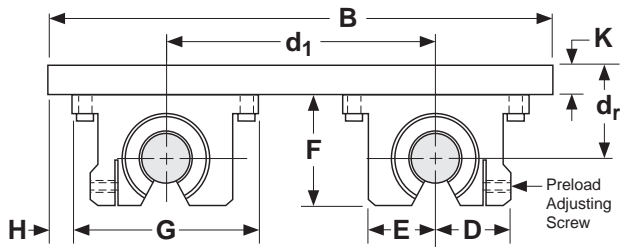
**Available For:**

TRCA8-6, TRCA10-6, TRCA12-6,  
TRCA16-6, TRCA20-8, TRCA24-12



**Available For:**

All other TRCA models,  
not shown above



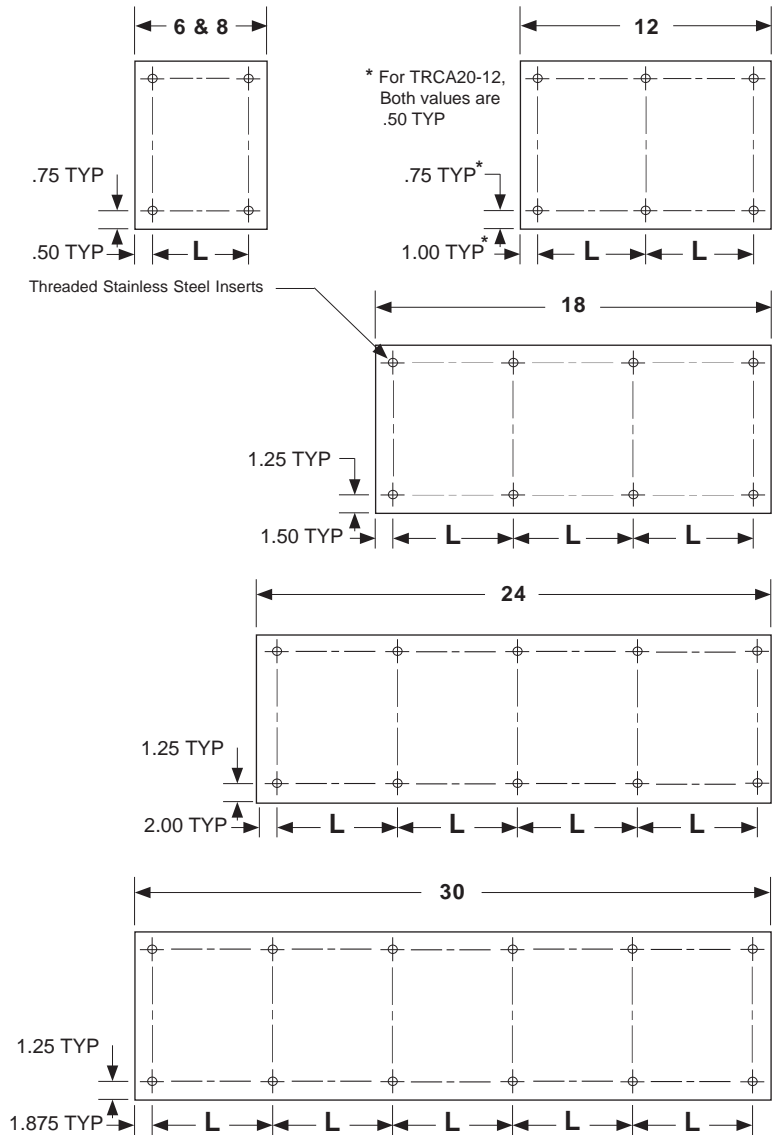
**Footnotes:**

(1) Size 0.500 has oil lubricant fitting. Sizes 0.625 and above have a 1/4-28 UNF straight thread access for lubrication.

### ( -P ) Pre-Machined Carriage Mounting Holes

All carriage assembly plates are available with a pre-determined number & location of mounting holes. These holes consist of stainless steel threaded inserts per the below chart. Custom mounting patterns are available upon request.

| Model Number | Carriage Length<br>(inches) | L<br>(inches) | Threaded Insert Size |
|--------------|-----------------------------|---------------|----------------------|
| TRCA8-6-P    | 6.00                        | 5.00          | #10-32               |
| TRCA8-12-P   | 12.00                       | 5.00          | #10-32               |
| TRCA8-18-P   | 18.00                       | 5.00          | #10-32               |
| TRCA10-6-P   | 6.00                        | 5.00          | #10-32               |
| TRCA10-12-P  | 12.00                       | 5.00          | #10-32               |
| TRCA10-18-P  | 18.00                       | 5.50          | #10-32               |
| TRCA12-6-P   | 6.00                        | 5.00          | 1/4-28               |
| TRCA12-12-P  | 12.00                       | 5.00          | 1/4-28               |
| TRCA12-18-P  | 18.00                       | 5.50          | 1/4-28               |
| TRCA16-6-P   | 6.00                        | 5.00          | 5/16-24              |
| TRCA16-12-P  | 12.00                       | 5.00          | 5/16-24              |
| TRCA16-18-P  | 18.00                       | 5.00          | 5/16-24              |
| TRCA16-24-P  | 24.00                       | 5.00          | 5/16-24              |
| TRCA20-8-P   | 8.00                        | 7.00          | 3/8-24               |
| TRCA20-12-P  | 12.00                       | 5.00          | 3/8-24               |
| TRCA20-18-P  | 18.00                       | 5.00          | 3/8-24               |
| TRCA20-24-P  | 24.00                       | 5.00          | 3/8-24               |
| TRCA24-12-P  | 12.00                       | 5.00          | 3/8-24               |
| TRCA24-18-P  | 18.00                       | 5.00          | 3/8-24               |
| TRCA24-24-P  | 24.00                       | 5.00          | 3/8-24               |
| TRCA24-30-P  | 30.00                       | 5.25          | 3/8-24               |
| TRCA32-18-P  | 18.00                       | 5.00          | 1/2-20               |
| TRCA32-24-P  | 24.00                       | 5.00          | 1/2-20               |
| TRCA32-30-P  | 30.00                       | 5.25          | 1/2-20               |

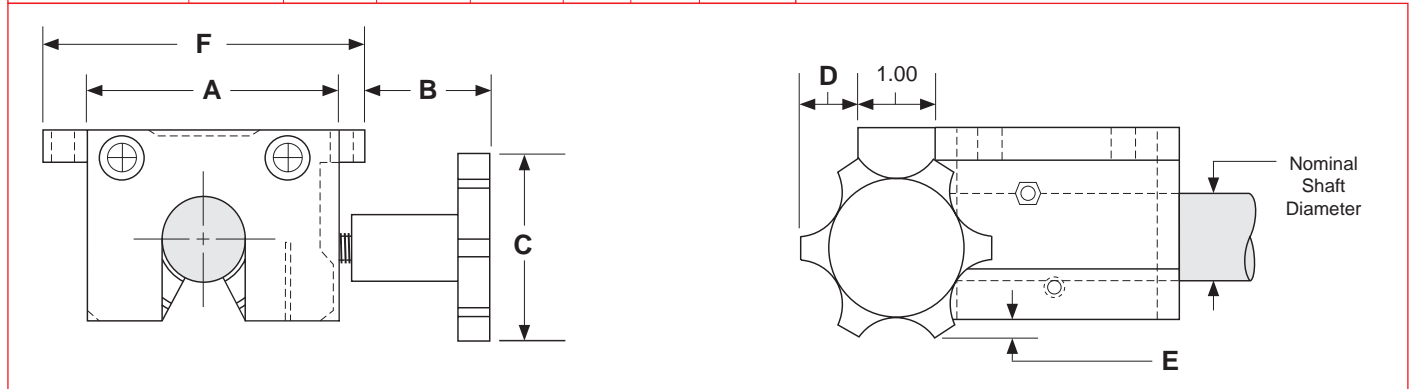


# Options

## ( -L ) Hand Wheel Lock

This option adds an aluminum clamping block to the end of a pillow block, which then provides for a manual lock of the bearing to the shaft. The threaded hand wheel shaft presses into a bronze insert which makes contact to provide a "pressure lock" to the shaft. The threaded steel screw will not back drive and does not make physical contact with the steel shaft (no steel to steel contact). The lock will be installed as shown below when ordered with a SLBC, SLBO, DLBC, DLBO, or TRCA series. Multiple locks can be installed onto a TRCA assembly.

| Nominal Shaft Diameter (inches) | Dimensions (inches) |      |      |      |      |        |      |
|---------------------------------|---------------------|------|------|------|------|--------|------|
|                                 | A                   | B    | C    | D    | E    |        | F    |
|                                 |                     |      |      |      | open | closed |      |
| 8 - 0.500                       | 1.680               | 1.72 | 2.00 | 0.50 | .56  | .44    | 2.00 |
| 10 - 0.625                      | 1.875               | 1.53 | 2.00 | 0.50 | .50  | .31    | 2.50 |
| 12 - 0.750                      | 2.067               | 1.46 | 2.00 | 0.50 | .37  | .18    | 2.75 |
| 16 - 1.000                      | 2.312               | 1.34 | 2.00 | 0.50 | .19  | ---    | 3.25 |
| 20 - 1.250                      | 3.125               | 1.66 | 2.50 | 0.75 | .17  | ---    | 4.00 |
| 24 - 1.500                      | 3.625               | 1.46 | 2.50 | 0.75 | .05  | ---    | 4.75 |
| 32 - 2.000                      | 4.600               | 1.45 | 2.50 | 0.75 | ---  | ---    | 6.00 |



## Custom Carriage Sizes

Custom carriage sizes that need to be wider, or longer than shown in this catalog can be provided upon request. This will allow for larger rail and bearing spacing ( $d_1$  &  $d_2$  dimensions).

## Custom Carriage Material & Finishes

The standard carriage material is aluminum with a black anodized finish. Aluminum plates can be finished in many different colors, while steel carriage plates can be provided with a black oxide finish. Many other custom alternatives for carriage plates are available.

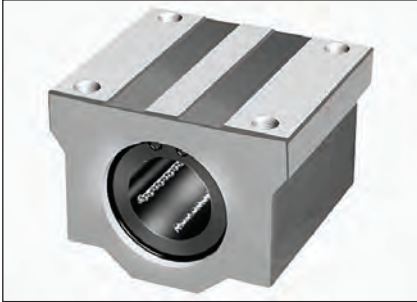
## Special Grease Options

Bearings can be supplied with special greases, or lubricants, in order to meet the environmental requirements of the application. Examples of operating environments which may require a special lubricant include: high or low temperature, clean rooms, vacuums and food grade applications.



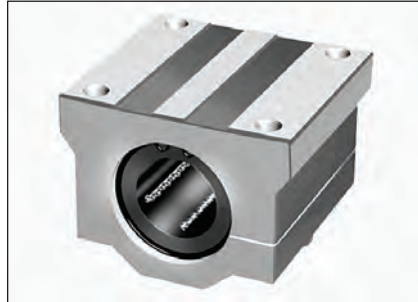
## SLBCM Series

Single Self-Aligning Closed



## SLBCM-A Series

Single Self-Aligning Closed Adjustable



## SLBOM Series

Single Self-Aligning Open



## DLBCM Series

Double Self-Aligning Closed



## SLBCME Series

Single Self-Aligning Closed



## SLBCME-A Series

Single Self-Aligning Closed Adjustable



## SLBOME Series

Single Self-Aligning Open



## SLBOME-A Series

Single Self-Aligning Open Adjustable



## DLBCME Series

Double Self-Aligning Closed



## DLBCME-A Series

Single Self-Aligning Closed Adjustable



## DLBOME Series

Double Self-Aligning Open



## DLBOME-A Series

Double Self-Aligning Open Adjustable

