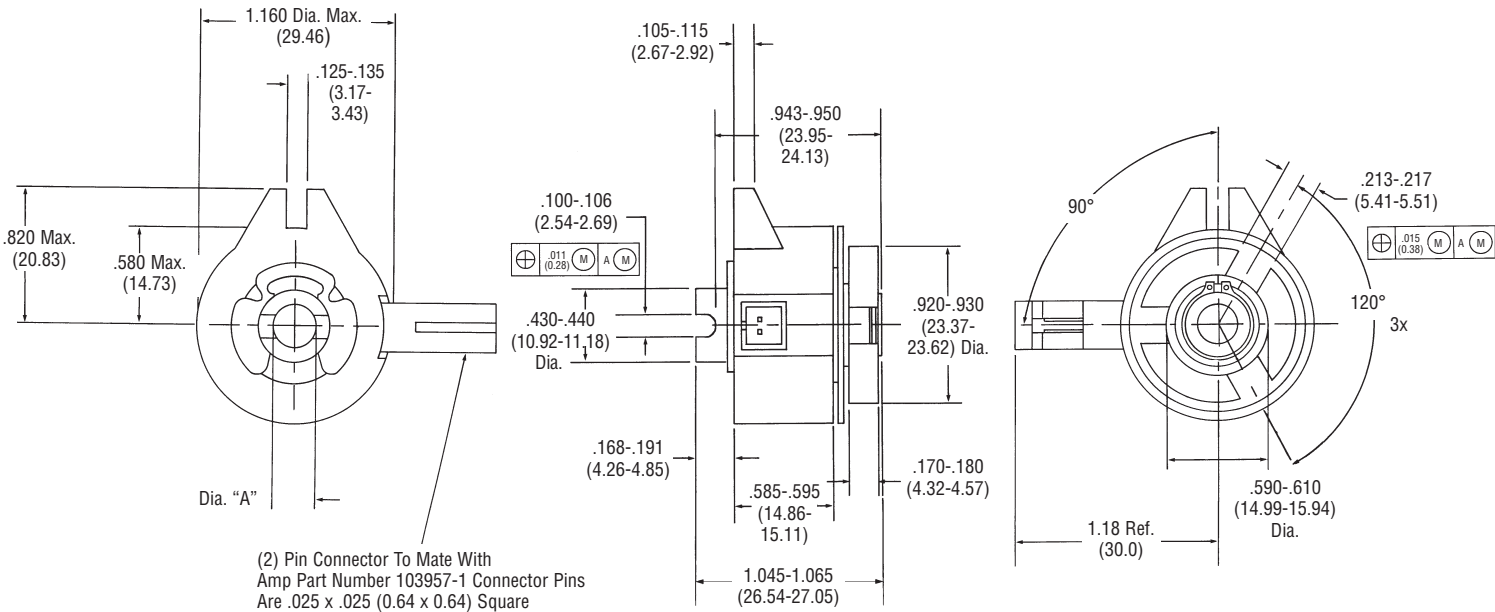


## Model ISC25 Clutch

The ISC25 shaft mounted clutch offers 25 lb.-in. of torque. It provides consistency, repeatability, and long life. Engagement and disengagement are virtually instantaneous.

The ISC25 features:

- High torque-to-size ratio
- Little generation of contaminants
- Positive engagement
- Integral electrical connector



### ISC25 Series Mechanical

STATIC TORQUE	INERTIA LB. - IN. <sup>2</sup>		MAX INPUT* SPEED - RPM
	SHAFT HUB	CONTROL COLLAR HUB & SPRING	
25 LB.-IN.	.0014	.0065	1200

\*For applications below 100 RPM, consult Inertia Dynamics.

### Bore Sizes

BORE DIA. "A"	
ENGLISH (inch)	METRIC (mm)
.2505 - .2530 inch	6.01 - 6.08 mm

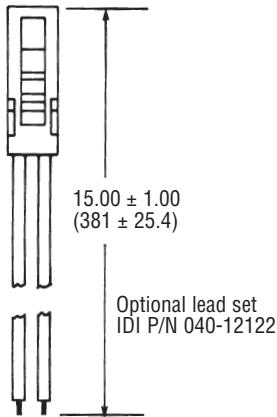
### NOTES:

- Optional lead wire set to mate with the clutch connector available. Order IDI part number 040-12122.

### Electrical

VOLTS DC	AMPS	OHMS ± 10%	WATTS
12	.323	401	3.60
24	.212	113	5.09
90	.050	1791	4.50

Nominal Data @ 20°C

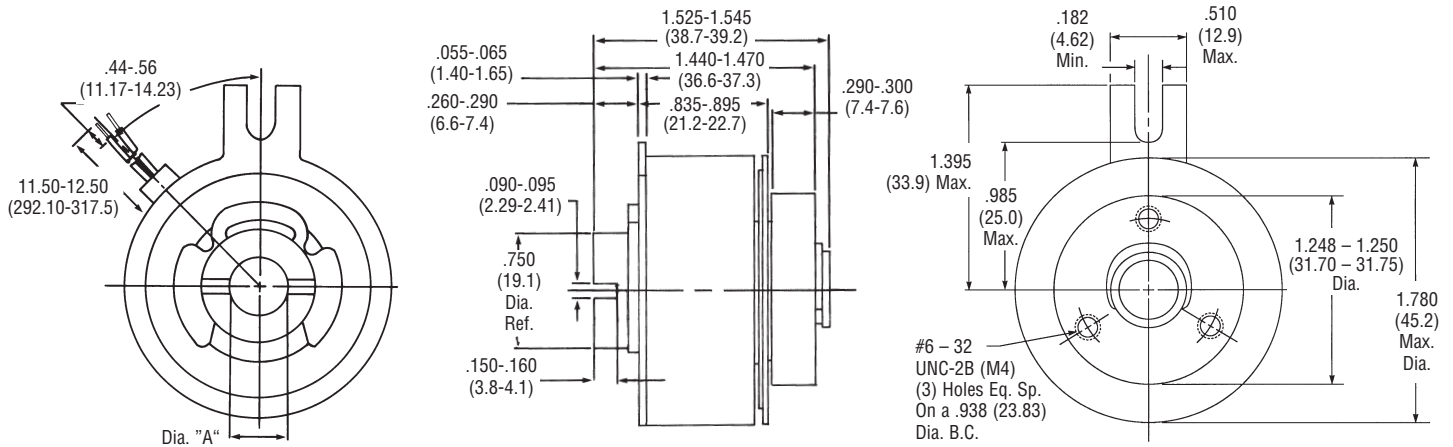


### UL and cUL Standards

Inertia Dynamics model ISC25 and ISC50 clutches are recognized by Underwriters Laboratories to both U.S. and Canadian safety requirements. Products built to meet their construction requirements are labeled with the UL recognized symbol. All products meet UL Class B requirements.



The ISC50 shaft mounted clutch provides 50 lb.-in. of torque. It has the same benefits as our ISC25 model clutch and can accommodate shaft diameters up to 10mm.



### ISC50 Series Mechanical

STATIC TORQUE	INERTIA LB. - IN. <sup>2</sup>		MAX INPUT* SPEED - RPM
	SHAFT HUB	CONTROL COLLAR HUB & SPRING	
50 LB.-IN.	.00497	.029	1000

\*For applications below 100 RPM, consult Inertia Dynamics.

### Electrical

VOLTS - DC	AMPS	OHMS ± 10%	WATTS
12	.480	25	5.8
24	.245	98	5.9
90	.056	1616	5.0

Nominal Data @ 20°C Lead Wire: Type UL1430, 22 AWG.

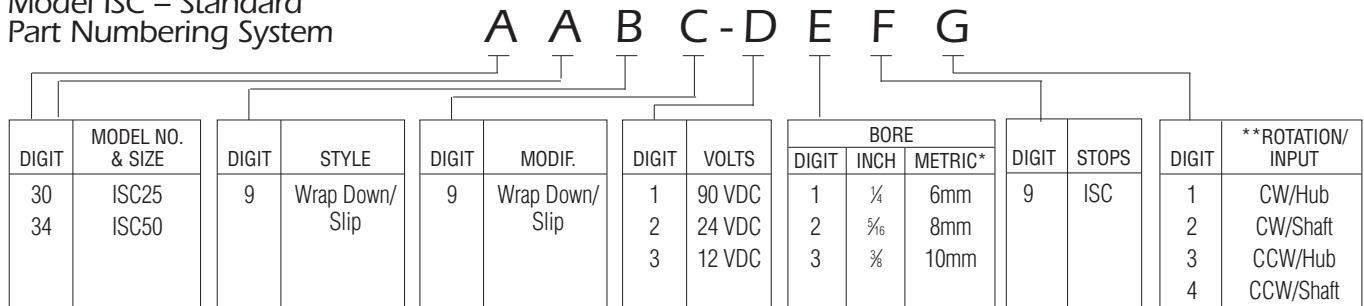
### Bore Sizes

BORE DIA. "A"	
ENGLISH (inch)	METRIC (mm)
.3130 - .3155 inch	8.01 - 8.07 mm
.3755 - .3780 inch	10.01 - 10.07 mm

### NOTES:

- Optional 3-lug hub available. Consult factory for further information.

### Model ISC - Standard Part Numbering System



\*Add "M" in front of Part Number to designate metric.

\*\*As viewed from hub end.

### Example

ISC25 clutch, 24 VDC, 1/4" bore, CW rotation, Hub input.  
Part No. 3099-2191