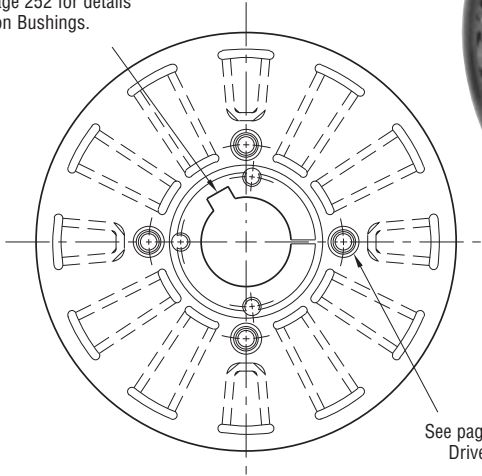


Clutch/Brake

PCB-1225 Normal Duty

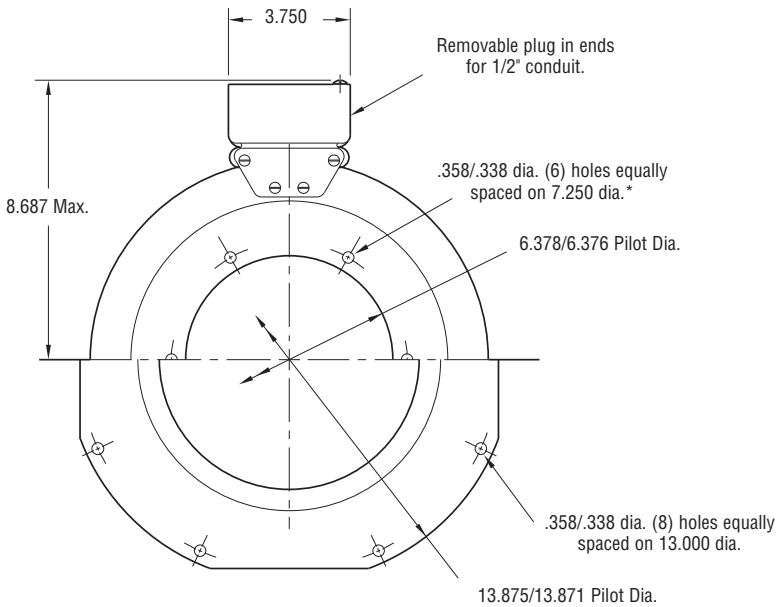


See page 252 for details on Bushings.

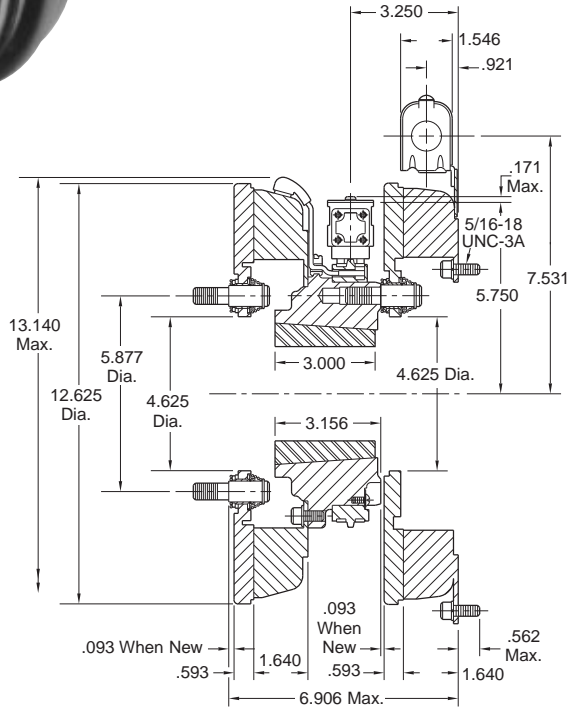


ARMATURE VIEW

See page 230 for details on Drive Pin mountings.



MAGNET VIEW
(Inside & Outside Mounted)



* Mounting holes are within .010 of true position relative to pilot diameter.

| | |
|------------------|----------------|
| Shaft Size | .937 – 3.000 |
| Static Torque | 465 lb. ft. |
| Maximum Speed | 3,000 rpm |
| Standard Voltage | D.C. 6, 24, 90 |

All dimensions are nominal unless otherwise noted.

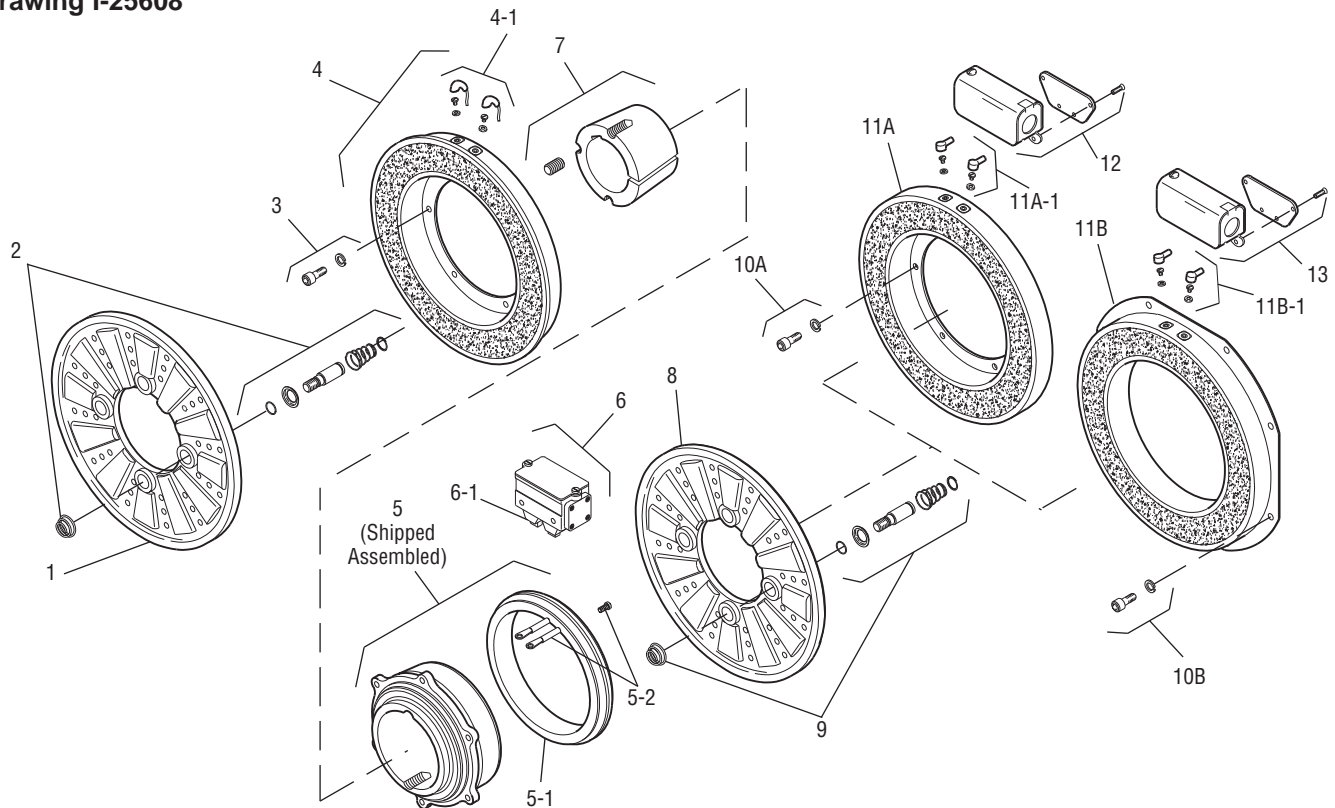
Information on inertia and weights begins on page 239. Coil data is on pages 250 and 251.

Customer Shall Maintain:

1. Concentricity of brake mounting pilot diameter with mounting shaft within .010 T.I.R.
2. Squareness of brake magnet mounting face with mounting shaft within .006 T.I.R measured at magnet mounting bolt circle.



Drawing I-25608



| Item | Description | Part Number | Qty. |
|------|---------------------------|----------------------|------|
| 1 | Armature | 5303-111-009 | 1 |
| 2 | Autogap Accessory | 5201-101-008 | 4 |
| 3 | Mounting Accessory | 5321-101-001 | 1 |
| 4 | Magnet | | 1 |
| | 6 Volt | 5303-631-005 | |
| | 24 Volt | 5303-631-007 | |
| | 90 Volt | 5303-631-008 | |
| 4-1 | Terminal Accessory | 5311-101-001 | 1 |
| 5 | Magnet Hub | | 1 |
| | Left Hand (shown) | 5303-541-001 | |
| | Right Hand | 5303-541-002 | |
| 5-1 | Collector Ring | 5301-749-001 | 1 |
| 5-2 | Collector Ring Assembly | 5303-101-004 | 1 |
| 6 | Brushholder | 5300-178-001 | 1 |
| 6-1 | Brush | 176-0001 | 4 |
| 7 | Bushing* | | 1 |
| | 15/16" to 3" Bore | 180-0262 to 180-0295 | |
| 8 | Armature | 5303-111-009 | 1 |
| 9 | Autogap Accessory | 5201-101-008 | 4 |
| 10A | Mounting Accessory - I.M. | 5321-101-001 | 1 |
| 10B | Mounting Accessory - O.M. | 5321-101-002 | 2 |
| 11A | Magnet - Inside Mounted | | 1 |
| | 6 Volt | 5313-631-005 | |
| | 24 Volt | 5313-631-006 | |
| | 90 Volt | 5313-631-007 | |

| Item | Description | Part Number | Qty. |
|-------|--------------------------|--------------|------|
| 11A-1 | Terminal Accessory | 5311-101-001 | 1 |
| 11B | Magnet - Outside Mounted | | 1 |
| | 6 Volt | 5313-631-010 | |
| | 24 Volt | 5313-631-012 | |
| | 90 Volt | 5313-631-011 | |
| 11B-1 | Terminal Accessory | 5311-101-001 | 1 |
| 12 | Conduit Box | 5200-101-011 | 2 |

How to Order:

1. Specify Voltage for Item 4 and Item 11A or 11B.
2. Specify left hand or right hand hub for Item 5. Bushing enters from magnet side for L.H. hub and from hub side for R.H.
3. Specify Bore Size for Item 7.
4. Specify Inside Mounted for Items 10A and 11A or Outside Mounted for Items 10B and 11B.
5. See Controls Section.

Example:

PCB-1225 Clutch Brake per I-25608 - 90 Volt, Left hand hub, 2" Bore, Inside Mounted.

These units meet the standards of UL508 and are listed under guide card #NMTR2, file #59164. These units are CSA certified under file #LR11543.

*See page 252 for specific part numbers.

Refer to Service Manual P-205.

Sold & Serviced By:

ELECTROMATE

Toll Free Phone (877) SERV098
Toll Free Fax (877) SERV099
www.electromate.com
sales@electromate.com