

Clutch Couplings and Clutches

Description

Dynacorp® clutches are used to control loads that are belt, chain, or gear driven. Clutch couplings are used to control and couple in-line shafts between the prime mover and the load. Dynacorp® clutches and clutch couplings are available for a wide variety of industrial applications.

Section Index

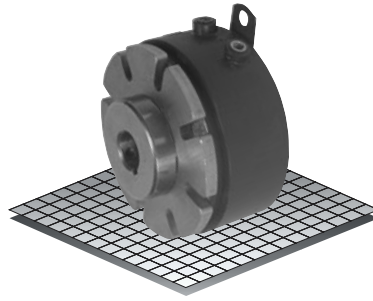
Products Complete information is shown for each product, including: specifications, drawings, dimensions, parts list, recommended controls and information for ordering

	Model	Nominal Size	Style	Static Torque (In.-Lb.)	Maximum HP @ 1800 RPM	Page
Clutch Couplings						
	303	3 inch	Spline Drive	60	1/3	G-2
	304	4 inch	Spline Drive	264	1-1/2	G-4
	305	5 inch	Pin Drive	684	3	G-6
	305	5 inch	Spline Drive	684	3	G-8
	308	8 inch	Pin Drive	2100	10	G-10
	308	8 inch	Spline Drive	2100	10	G-12
	310	10 inch	Pin Drive	3600	15	G-14
	310	10 inch	Spline Drive	3600	15	G-16
Clutches						
	303	3 inch	Spline Drive	60	1/3	G-18
	304	4 inch	Spline Drive	264	1-1/2	G-20
	305	5 inch	Spline Drive	684	3	G-22
	308	8 inch	Pin Drive	2100	10	G-24
	310	10 inch	Pin Drive	3600	15	G-26
Bearing Data	Engineering information needed to adapt standard bearings for mounting sheaves, sprockets etc.....					G-28
Drive Pin & Spline Hub						
Mounting Data	Engineering information needed to machine sheave, sprocket etc. for mounting to clutch.....					G-29
Terminal Insulating Kit						G-29
Zero Air Gap Accessory Kit						G-30

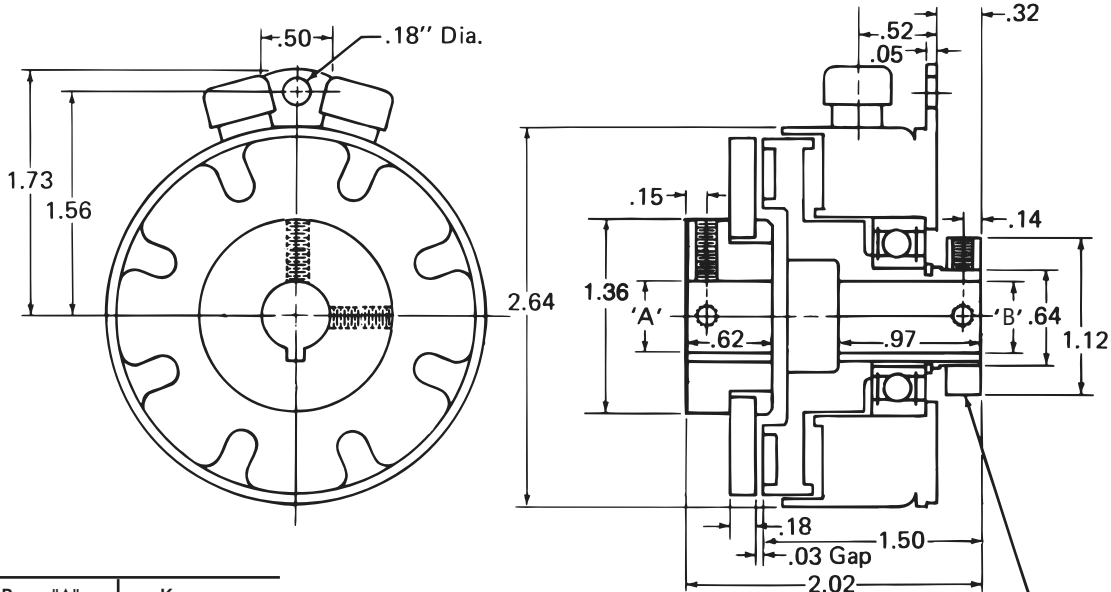
Clutch Coupling

Model

● 303



- ▶ Stationary Field
- ▶ Bearing Mounted
- ▶ Spline Drive



Collar used with 1/2" Rotor Bore only.

Bore "A"	Keyway
1/2"	.125 x .062
5/8"	.187 x .094
3/4"	.187 x .094

Bore "B"	Keyway
3/8"	.093 x .046
1/2"	.125 x .062

Technical Data and Torque (In. Lb.)

Model No.	Wt. Lbs.	Static Torque in. lb.	Max. Speed RPM	Coil Voltage vdc	* Rated Current amps	RPM									
						0	300	600	900	1200	1500	1800	2400	3000	3600
303	1.3	60	3600	90	.11	60	53	48	43	42	41	38	34	32	30

* Rated Current for 90v.
Refer to Section M for torque and heat dissipation curves.

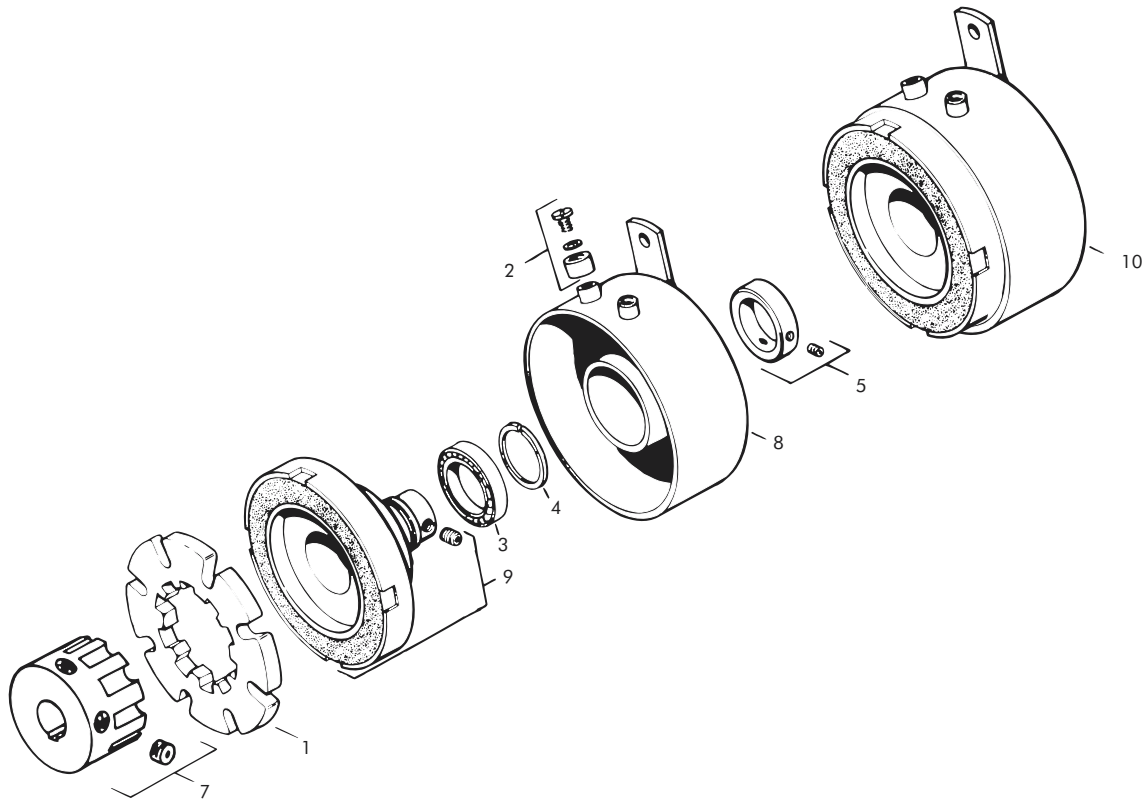
Order Parts for Assembly No. FC303158

	Armature Plate Assembly	Magnet Accessory	Armature Hub Assembly			Bearing Mounted Rotor & Field	
			Bore "A"			Bore "B"	
			1/2"	5/8"	3/4"	3/8"	1/2"
24 Volts	303390-2	326147	303451-3	303451-5	303453-8	303773-1	303773-3
90 Volts	303390-2	326147	303451-3	303451-5	303453-8	303774-1	303774-3

To order, specify: 1, Armature Plate Assembly
1, Magnet Accessory
1, Armature Hub Assembly of required Bore "A" size
1, Bearing Mounted Rotor and Field Assembly of required Voltage and Bore "B" size

For controls, see Section K.

Clutch Coupling – Replacement Parts



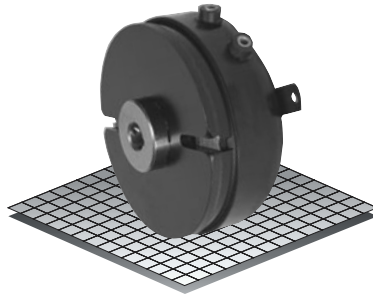
Replacement Parts

Item	Qty.	Description	Part No.	Item	Qty.	Description	Part No.
1	1	Armature Plate Assembly (10 Teeth)	303390-2	9	1	Rotor Assembly	
2	1	Magnet Accessory	326147			3/8" Bore	303556-1
3	1	Bearing	DY-9436			1/2" Bore	303556-3
4	1	Retaining Ring (External)	DY-1581	10	1	Bearing Mounted Rotor and	
5	1	Collar (furnished with .500 bore)	326304-1			Field Assembly	
7	1	Armature Hub Assembly				24 Volts, 3/8" Bore	303773-1
		3/8" Bore (plain bore)	303453-PB			24 Volts, 1/2" Bore	303773-3
		1/2" Bore	303451-3			90 Volts, 3/8" Bore	303774-1
		5/8" Bore	303451-5			90 Volts, 1/2" Bore	303774-3
		3/4" Bore	303453-8				
8	1	Field					
		24 Volts	303333				
		90 Volts	303334				

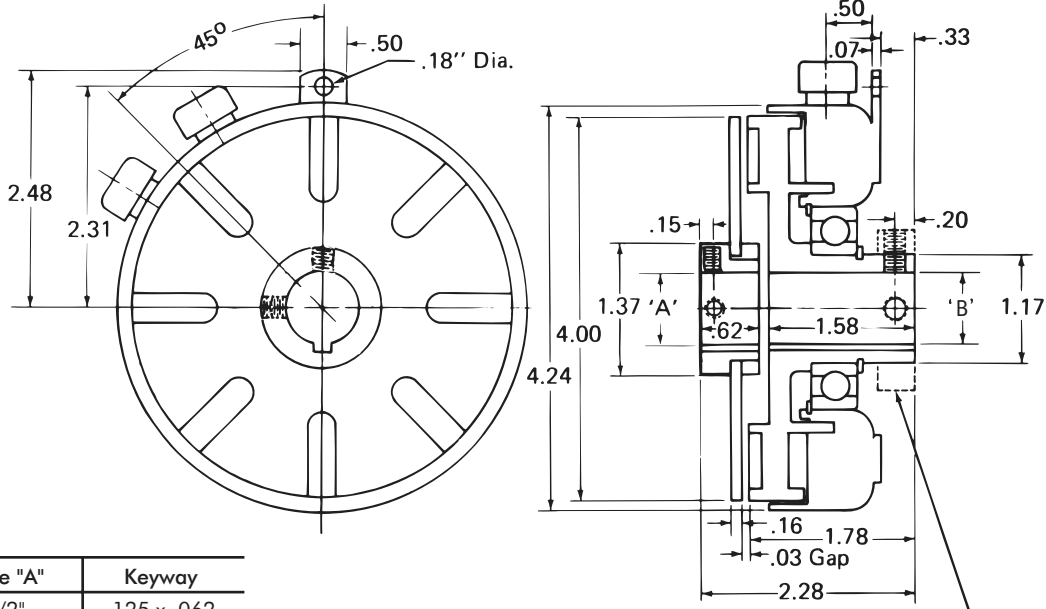
Clutch Coupling

Model

● 304



- ▶ Stationary Field
- ▶ Bearing Mounted
- ▶ Spline Drive



Bore "A"	Keyway
1/2"	.125 x .062
5/8"	.187 x .094
3/4"	.187 x .094
7/8"	.187 x .094
1"	.250 x .125

Bore "B"	Keyway
1/2"	.125 x .062
5/8"	.187 x .094
3/4"	.187 x .094
7/8"	.187 x .094

Technical Data and Torque (In. Lb.)

Model No.	Wt. Lbs.	Static Torque in. lb.	Max. Speed RPM	Coil Voltage vdc	* Rated Current amps	RPM									
						0	300	600	900	1200	1500	1800	2400	3000	3600
304	3.5	264	3600	90	.13	264	216	192	180	168	156	156	144	132	120

* Rated Current for 90v.

Refer to Section M for torque and heat dissipation curves. Refer to Page H-18 for dimensions of Adjusto-gap® styles.

Order Parts for Assembly No. FC304158

	Armature Plate Assembly	Magnet Accessory	Armature Hub Assembly			Bearing Mounted Rotor & Field			
			Bore "A"			Bore "B"			
			1/2"	5/8"	3/4"	1/2"	5/8"	3/4"	7/8"
24 Volts	304390-11	326146-2	303451-3	303451-5	303453-8	304773-1	304773-3	304773-5	304773-6
90 Volts	304390-11	326146-2	303451-3	303451-5	303453-8	304774-1	304774-3	304774-5	304774-6

To order, specify:

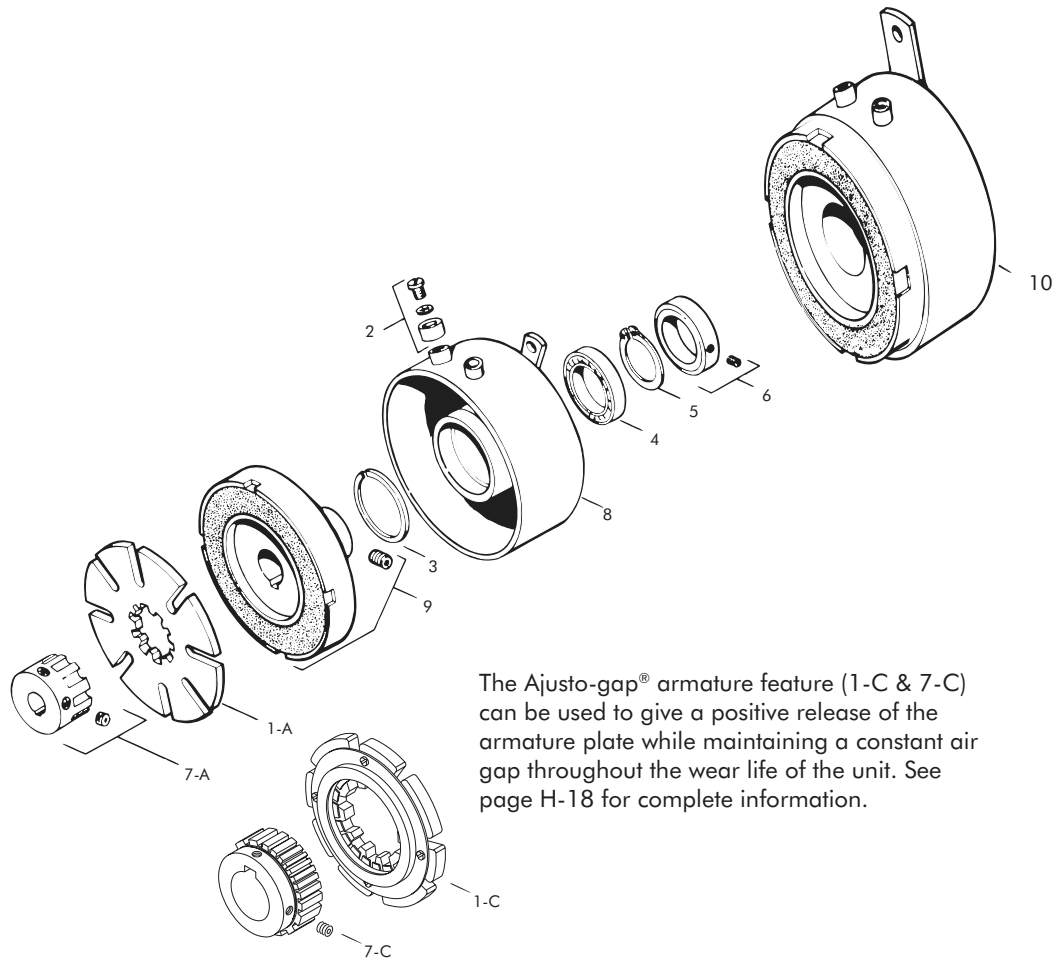
- 1, Armature Plate Assembly
- 1, Magnet Accessory
- 1, Armature Hub Assembly of required Bore "A" size
- 1, Bearing Mounted Rotor and Field Assembly of required Voltage and Bore "B" size

For controls, see Section K.

Sold & Serviced By:

 Toll Free Phone (877) SERV098
 Toll Free Fax (877) SERV099
www.electromate.com
sales@electromate.com

Clutch Coupling – Replacement Parts



The Ajusto-gap® armature feature (1-C & 7-C) can be used to give a positive release of the armature plate while maintaining a constant air gap throughout the wear life of the unit. See page H-18 for complete information.

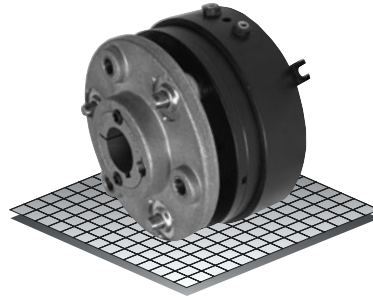
Replacement Parts

Item	Qty.	Description	Part No.	Item	Qty.	Description	Part No.
1-A	1	Armature Plate Assembly (10 Teeth) 1/2" through 3/4" bores	304390-11	8	1	Field	
1-C	1	Ajusto-gap® Arm. Plate Assy. 7/8" through 1" bores	304396-8			24 Volts	304333
2	1	Magnet Accessory	326146-2			90 Volts	304334
3	1	Retaining Ring (Internal)	DY-10860	9	1	Rotor Assembly	
4	1	Bearing	RY-20320			1/2" Bore	304556-1
5	1	Retaining Ring (External)	DY-1102			5/8" Bore	304556-3
6	1	Collar				3/4" Bore	304556-5
7-A	1	Armature Hub Assembly	326519-1			7/8" Bore	304556-6
		1/2" Bore	303451-3	10	1	Rotor and Field Assembly	
		5/8" Bore	303451-5			24 Volts, 1/2" Bore	304773-1
		3/4" Bore	303453-8			24 Volts, 5/8" Bore	304773-3
7-C	1	Ajusto-gap® Hub Assembly				24 Volts, 3/4" Bore	304773-5
		7/8"	304465-4			24 Volts, 7/8" Bore	304773-6
		1"	304465-5			90 Volts, 1/2" Bore	304774-1
						90 Volts, 5/8" Bore	304774-3
						90 Volts, 3/4" Bore	304774-5
						90 Volts, 7/8" Bore	304774-6

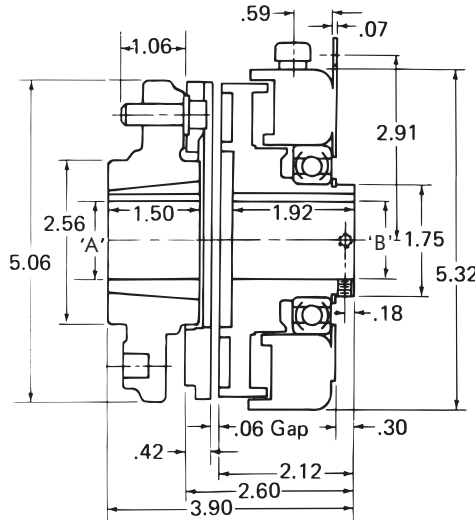
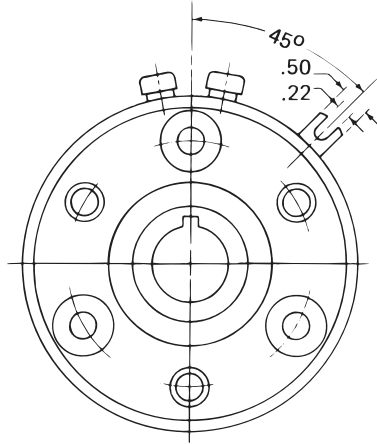
Clutch Coupling

Model

● 305



- ▶ Stationary Field
- ▶ Bearing Mounted
- ▶ Pin Drive



Bushing 1215

Bore "A"	Keyway	Part No.
1/2"	.500 .125 x .062	326058 - 1
9/16"	.562 .125 x .062	326058 - 2
5/8"	.625 .187 x .093	326058 - 3
11/16"	.687 .187 x .093	326058 - 4
3/4"	.750 .187 x .093	326058 - 5
13/16"	.812 .187 x .093	326058 - 6
7/8"	.875 .187 x .093	326058 - 7
15/16"	.937 .250 x .125	326058 - 8
1"	1.000 .250 x .125	326058 - 9
1-1/16"	1.062 .250 x .125	326058 - 10
1-1/8"	1.125 .250 x .125	326058 - 11
1-3/16"	1.187 .250 x .125	326058 - 12
1-1/4"	1.250 .250 x .125	326058 - 13

Bore "B"	Keyway
3/4"	.187 x .094
7/8"	.187 x .094
1"	.250 x .125
1-1/8"	.250 x .125
1-1/4"	.250 x .125

Technical Data and Torque (In. Lb.)

Model No.	Wt. Lbs.	Static Torque in. lb.	Max. Speed RPM	Coil Voltage vdc	* Rated Current amps	RPM									
						0	300	600	900	1200	1500	1800	2400	3000	3600
305	6	684	3600	90	.40	684	624	564	516	468	420	384	324	288	252

* Rated Current for 90v.

Refer to Section M for torque and heat dissipation curves.

Customer must maintain concentricity between shafts within .010.

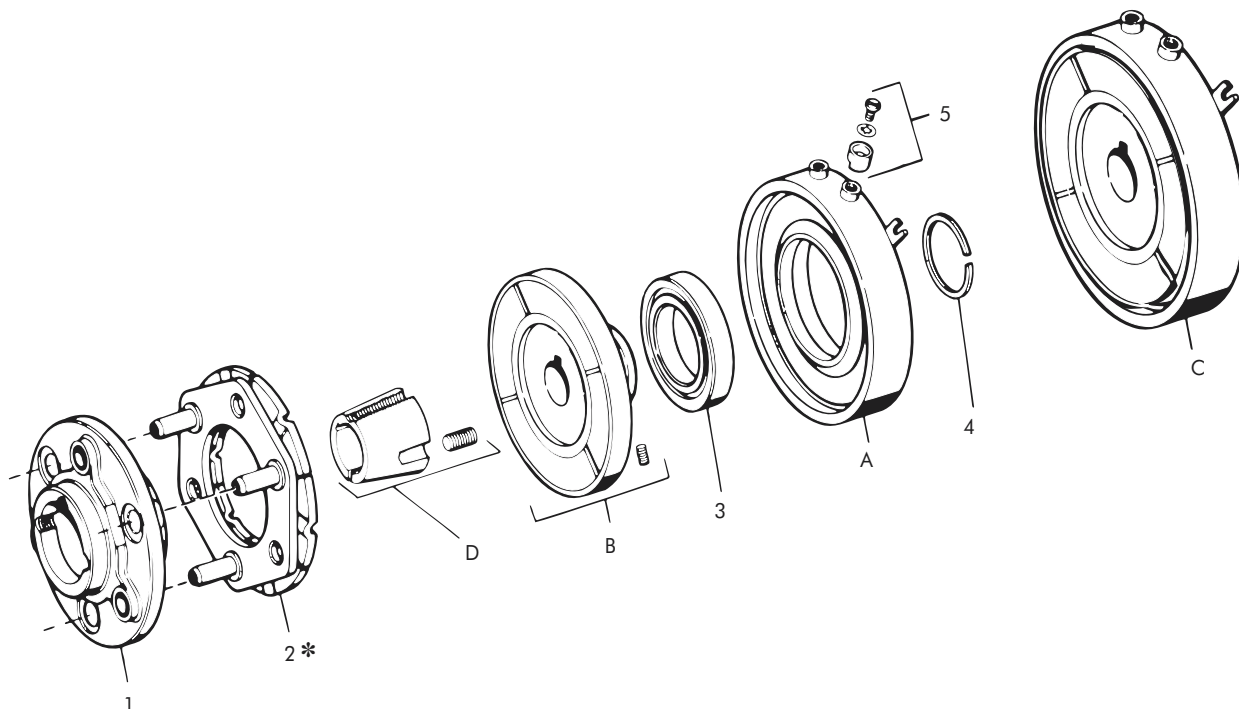
Order Parts for Assembly No. FC305155

	Armature Plate Assembly	Armature Hub Assembly	Bearing Mounted Rotor & Field					1215 Taper Bushing
			Bore "B"					
			3/4"	7/8"	1"	1-1/8"	1-1/4"	
24 Volts	305381	305450	305773-1	305773-2	305773-4	305773-5	305773-6	326058-XX
90 Volts	305381	305450	305774-1	305774-2	305774-4	305774-5	305774-6	326058-XX

To order, specify: 1, Armature Plate Assembly
 1, Armature Hub Assembly
 1, Bearing Mounted Rotor and Field of required Voltage and Bore "B" size
 1, Taper Bushing (1215) of required Bore size.

For controls, see Section K.

Clutch Coupling – Replacement Parts



Replacement Parts

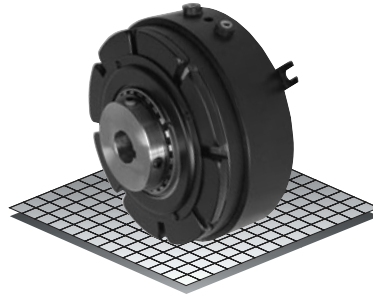
Item	Qty.	Description	Part No.	Item	Qty.	Description	Part No.
1	1	Armature Hub Assembly	305450	C	1	Rotor and Field Assembly	
2	1	Armature Plate Assy. (24 Teeth)	305381			24 Volts, 3/4" Bore	305773-1
3	1	Bearing	DY-6953			24 Volts, 7/8" Bore	305773-2
4	1	Retaining Ring (External)	DY-12712			24 Volts, 1" Bore	305773-4
5	1	Magnet Accessory	326146-1			24 Volts, 1-1/8" Bore	305773-5
A	1	Field				24 Volts, 1-1/4" Bore	305773-6
		24 Volts	305333			90 Volts, 3/4" Bore	305774-1
		90 Volts	305334			90 Volts, 7/8" Bore	305774-2
B	1	Rotor Assembly				90 Volts, 1" Bore	305774-4
		3/4" Bore	305556-1			90 Volts, 1-1/8" Bore	305774-5
		7/8" Bore	305556-2			90 Volts, 1-1/4" Bore	305774-6
		1" Bore	305556-4	D	1	Taper Bushing (1215)	326058-XX
		1-1/8" Bore	305556-5				
		1-1/4" Bore	305556-6				

* Current design armatures are solid.

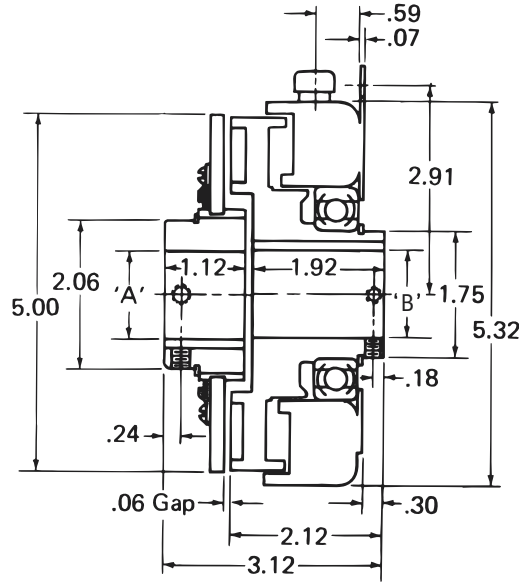
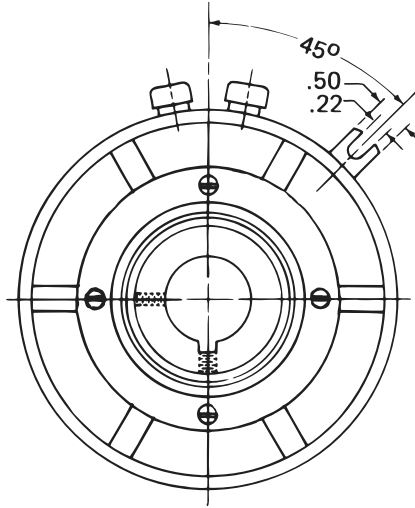
Clutch Coupling

Model

● 305



- ▶ Stationary Field
- ▶ Bearing Mounted
- ▶ Spline Drive



Bore "A" & "B"	Keyway
3/4"	.187 x .094
7/8"	.187 x .094
1"	.250 x .125
1-1/8"	.250 x .125
1-1/4"	.250 x .125

Technical Data and Torque (In. Lb.)

Model No.	Wt. Lbs.	Static Torque in. lb.	Max. Speed RPM	Coil Voltage vdc	* Rated Current amps	RPM									
						0	300	600	900	1200	1500	1800	2400	3000	3600
305	4.5	684	3600	90	.40	684	624	564	516	468	420	384	324	288	252

* Rated Current for 90v.

Refer to Section M for torque and heat dissipation curves.

Customer must maintain concentricity between shafts within .010.

Order Parts for Assembly No. FC305158

Bore	Bearing Mounted Rotor & Field		Armature Plate Assembly	Armature Hub
	24 Volts	90 Volts		
3/4"	305773-1	305774-1	305396-1	305453-1
7/8"	305773-2	305774-2	305396-1	305453-2
1"	305773-4	305774-4	305396-1	305453-3
1-1/8"	305773-5	305774-5	305396-1	305453-4
1-1/4"	305773-6	305774-6	305396-1	305453-5

To order, specify:

- 1, Bearing Mounted Rotor and Field of required Voltage and Bore size
- 1, Armature Plate Assembly
- 1, Armature Hub of required Bore size

For controls, see Section K.

Sold & Serviced By:

ELECTROMATE

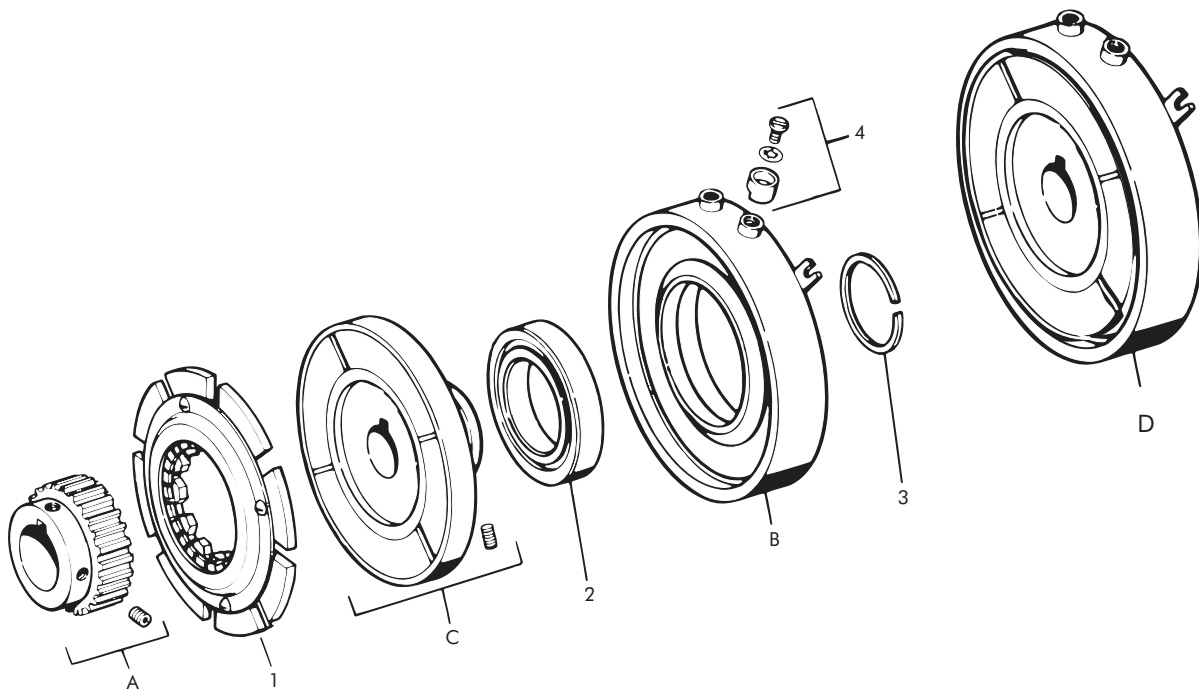
Toll Free Phone (877) SERV098

Toll Free Fax (877) SERV099

www.electromate.com

sales@electromate.com

Clutch Coupling – Replacement Parts



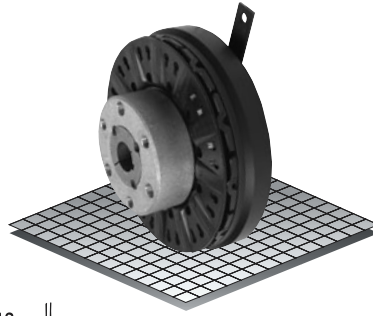
Replacement Parts

Item	Qty.	Description	Part No.	Item	Qty.	Description	Part No.
1	1	Armature Plate Assy. (24 Teeth)	305396-1	D	1	Rotor and Field Assembly	
2	1	Bearing	DY-6953			24 Volts, 3/4" Bore	305773-1
3	1	Retaining Ring (External)	DY-12712			24 Volts, 7/8" Bore	305773-2
4	1	Magnet Accessory	326146-1			24 Volts, 1" Bore	305773-4
A	1	Armature Hub Assembly				24 Volts, 1-1/8" Bore	305773-5
		3/4" Bore	305453-1			24 Volts, 1-1/4" Bore	305773-6
		7/8" Bore	305453-2			90 Volts, 3/4" Bore	305774-1
		1" Bore	305453-3			90 Volts, 7/8" Bore	305774-2
		1-1/8" Bore	305453-4			90 Volts, 1" Bore	305774-4
		1-1/4" Bore	305453-5			90 Volts, 1-1/8" Bore	305774-5
B	1	Field				90 Volts, 1-1/4" Bore	305774-6
		24 Volts	305333				
		90 Volts	305334				
C	1	Rotor Assembly					
		3/4" Bore	305556-1				
		7/8" Bore	305556-2				
		1" Bore	305556-4				
		1-1/8" Bore	305556-5				
		1-1/4" Bore	305556-6				

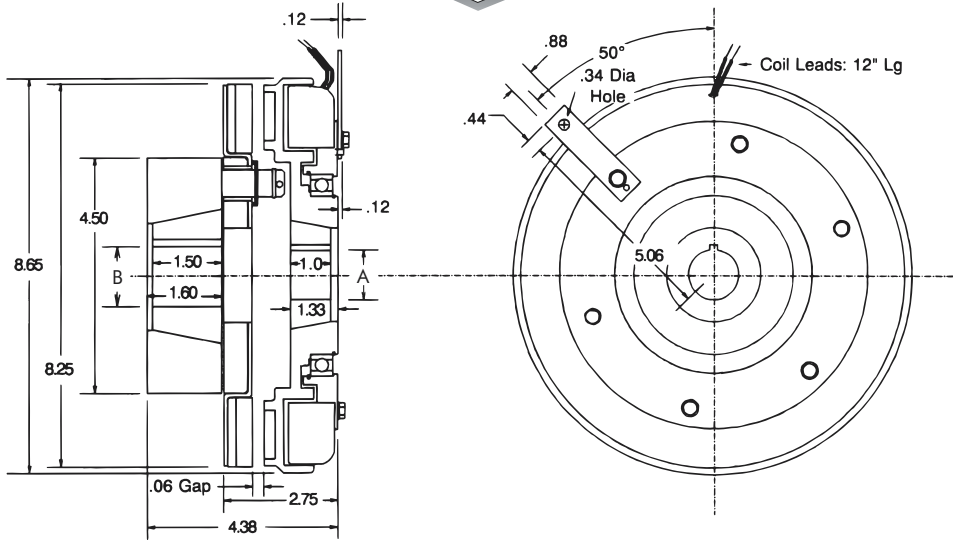
Clutch Coupling

Model

● 308



- ▶ Stationary Field
- ▶ Bearing Mounted
- ▶ Pin Drive



Bushing 1615

Bore "B"	Keyway	Part No.
1/2"	.500 .125 x .062	326015 - 1
9/16"	.562 .125 x .062	326015 - 2
5/8"	.625 .187 x .093	326015 - 3
11/16"	.687 .187 x .093	326015 - 4
3/4"	.750 .187 x .093	326015 - 5
13/16"	.812 .187 x .093	326015 - 6
7/8"	.875 .187 x .093	326015 - 7
15/16"	.937 .250 x .125	326015 - 8
1"	1.000 .250 x .125	326015 - 9
1-1/16"	1.062 .250 x .125	326015 - 10
1-1/8"	1.125 .250 x .125	326015 - 11
1-3/16"	1.187 .250 x .125	326015 - 12
1-1/4"	1.250 .250 x .125	326015 - 13
1-5/16"	1.312 .312 x .156	326015 - 14
1-3/8"	1.375 .312 x .156	326015 - 15
1-7/16"	1.437 .375 x .187	326015 - 16
1-1/2"	1.500 .375 x .187	326015 - 17
1-9/16"	1.562 .375 x .187	326015 - 18
1-5/8"	1.625 .375 x .187	326015 - 19
*1-3/8"	1.375 .375 x .125	326015 - 20
*1-5/8"	1.625 .375 x .125	326015 - 21

Bushing 1610

Bore "A"	Keyway	Part No.
1/2"	.500 .125 x .062	326642 - 1
9/16"	.562 .125 x .062	326642 - 2
5/8"	.625 .187 x .093	326642 - 3
11/16"	.687 .187 x .093	326642 - 4
3/4"	.750 .187 x .093	326642 - 5
13/16"	.812 .187 x .093	326642 - 6
7/8"	.875 .187 x .093	326642 - 7
15/16"	.937 .250 x .125	326642 - 8
1"	1.000 .250 x .125	326642 - 9
1-1/16"	1.062 .250 x .125	326642 - 10
1-1/8"	1.125 .250 x .125	326642 - 11
1-3/16"	1.187 .250 x .125	326642 - 12
1-1/4"	1.250 .250 x .125	326642 - 13
1-5/16"	1.312 .312 x .156	326642 - 14
1-3/8"	1.375 .312 x .156	326642 - 15
1-7/16"	1.437 .375 x .187	326642 - 16
1-1/2"	1.500 .375 x .187	326642 - 17
1-9/16"	1.562 .375 x .187	326642 - 18
1-5/8"	1.625 .375 x .187	326642 - 19

Technical Data and Torque (In. Lb.)

Model No.	Wt. Lbs.	Static Torque in. lb.	Max. Speed RPM	Coil Voltage vdc	*Rated Current amps	RPM									
						0	300	600	900	1200	1500	1800	2400	3000	3600
308	21.3	2100	3600	90	.57	2100	1848	1596	1428	1344	1260	1128	888	720	588

* Rated Current for 90v.

Refer to Section M for torque and heat dissipation curves. Customer must maintain concentricity between shafts within .010.

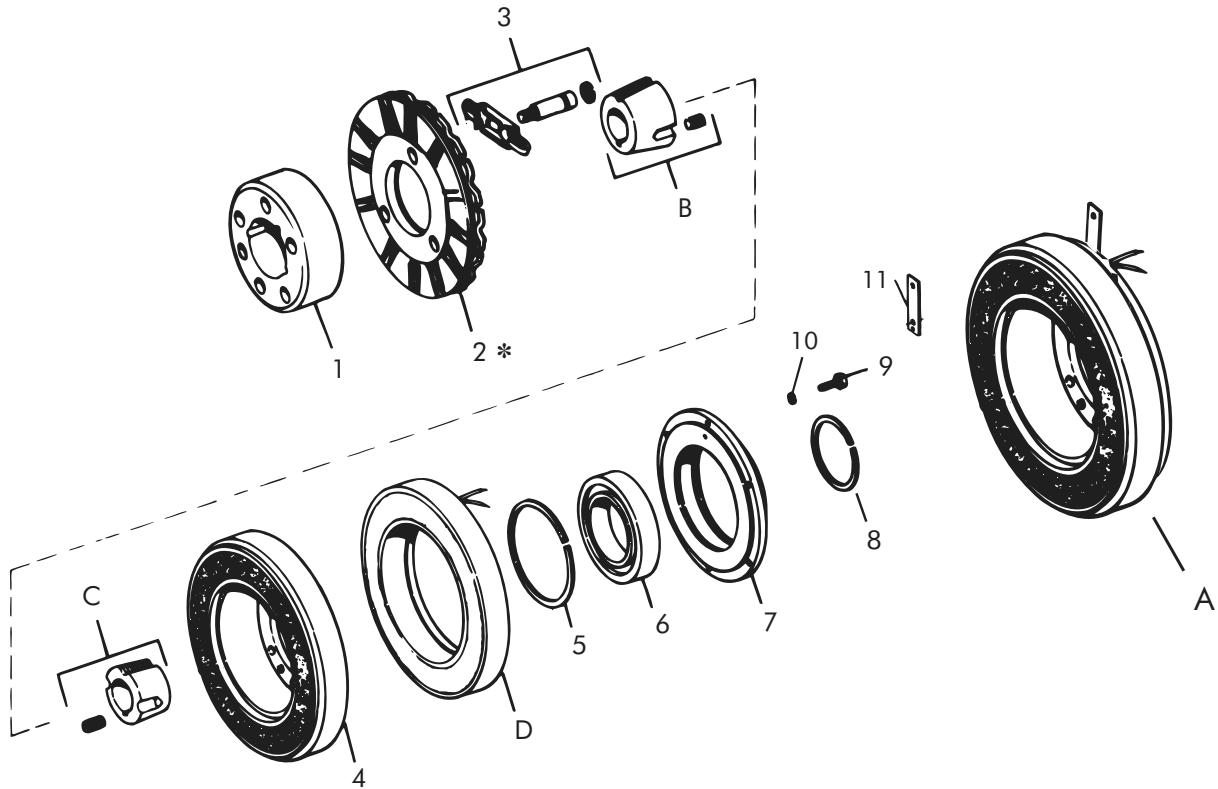
Order Parts for Assembly No. FC308155-3

	Armature Hub	Armature Plate Assembly	(1615) Taper Bushing	Bearing Mounted Rotor & Field	(1610) Taper Bushing	Ajusto-gap® Accessory
24 Volts	308450	308380	326015-XX	308773	326642-XX	326075
90 Volts	308450	308380	326015-XX	308774	326642-XX	326075

To order, specify: 1, Armature Hub
 1, Taper Bushing (1615) of required Bore size
 1, Armature Plate Assembly
 1, Bearing Mounted Rotor and Field of required Voltage
 1, Ajusto-gap® Accessory
 1, Taper Bushing (1610) of required Bore size

For controls, see Section K.

Clutch Coupling – Replacement Parts



Replacement Parts

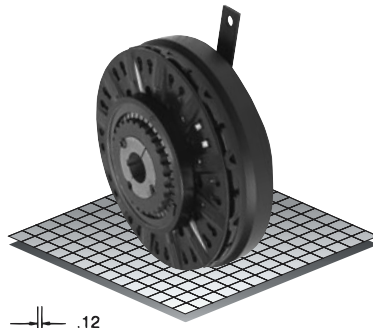
Item	Qty.	Description	Part No.	Item	Qty.	Description	Part No.
1	1	Armature Hub	308450	12	1	Pin (not shown)	RY-20094
2	1	Armature Plate Assembly	308380	A	1	Bearing Mounted Rotor and Field	
3	1	Ajusto-gap® Accessory	326075			24 Volts	308773
3a	3	Drive Pin	326008			90 Volts	308774
3b	3	Spring	326149	B	1	Taper Bushing (1615)	326015-XX
3c	3	Retaining Ring (External)	DY-10572	C	1	Taper Bushing (1610)	326642-XX
4	1	Rotor Assembly	308820-8	D	1	Field	
5	1	Retaining Ring (Internal)	RY-20042			24 Volts	308733-4
6	1	Bearing	RY-20047			90 Volts	308734-4
7	1	Field Mounting Hub	308752				
8	1	Retaining Ring (External)	RY-20037				
9	6	Screw	DY-14764				
10	6	Washers	DY-4366				
11	1	Support Arm	326549				

* Current design armatures are solid.

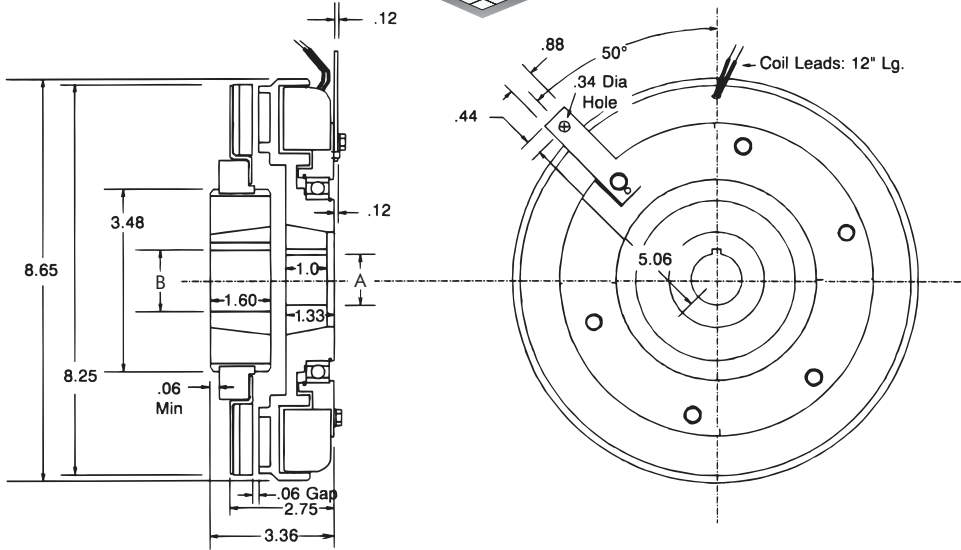
Clutch Coupling

Model

● 308



- ▶ Stationary Field
- ▶ Bearing Mounted
- ▶ Spline Drive



Bushing 1615

Bore "B"	Keyway	Part No.
1/2"	.500	326015 - 1
9/16"	.562	326015 - 2
5/8"	.625	326015 - 3
11/16"	.687	326015 - 4
3/4"	.750	326015 - 5
13/16"	.812	326015 - 6
7/8"	.875	326015 - 7
15/16"	.937	326015 - 8
1"	1.000	326015 - 9
1-1/16"	1.062	326015 - 10
1-1/8"	1.125	326015 - 11
1-3/16"	1.187	326015 - 12
1-1/4"	1.250	326015 - 13
1-5/16"	1.312	326015 - 14
1-3/8"	1.375	326015 - 15
1-7/16"	1.437	326015 - 16
1-1/2"	1.500	326015 - 17
1-9/16"	1.562	326015 - 18
1-5/8"	1.625	326015 - 19
*1-3/8"	1.375	326015 - 20
*1-5/8"	1.625	326015 - 21

Bushing 1610

Bore "A"	Keyway	Part No.
1/2"	.500	326642 - 1
9/16"	.562	326642 - 2
5/8"	.625	326642 - 3
11/16"	.687	326642 - 4
3/4"	.750	326642 - 5
13/16"	.812	326642 - 6
7/8"	.875	326642 - 7
15/16"	.937	326642 - 8
1"	1.000	326642 - 9
1-1/16"	1.062	326642 - 10
1-1/8"	1.125	326642 - 11
1-3/16"	1.187	326642 - 12
1-1/4"	1.250	326642 - 13
1-5/16"	1.312	326642 - 14
1-3/8"	1.375	326642 - 15
1-7/16"	1.437	326642 - 16
1-1/2"	1.500	326642 - 17
1-9/16"	1.562	326642 - 18
1-5/8"	1.625	326642 - 19

Technical Data and Torque (In. Lb.)

Model No.	Wt. Lbs.	Static Torque in. lb.	Max. Speed RPM	Coil Voltage vdc	*Rated Current amps	RPM									
						0	300	600	900	1200	1500	1800	2400	3000	3600
308	14.2	2100	3600	90	.57	2100	1848	1596	1428	1344	1260	1128	888	720	588

* Rated Current for 90v.

Refer to Section M for torque and heat dissipation curves. Customer must maintain concentricity between shafts within .010.

Order Parts for Assembly No. FC308158-3

	Armature Hub	Armature Plate Assembly	(1615) Taper Bushing	Bearing Mounted Rotor & Field	(1610) Taper Bushing
24 Volts	308680	308382-4	326015-XX	308773	326642-XX
90 Volts	308680	308382-4	326015-XX	308774	326642-XX

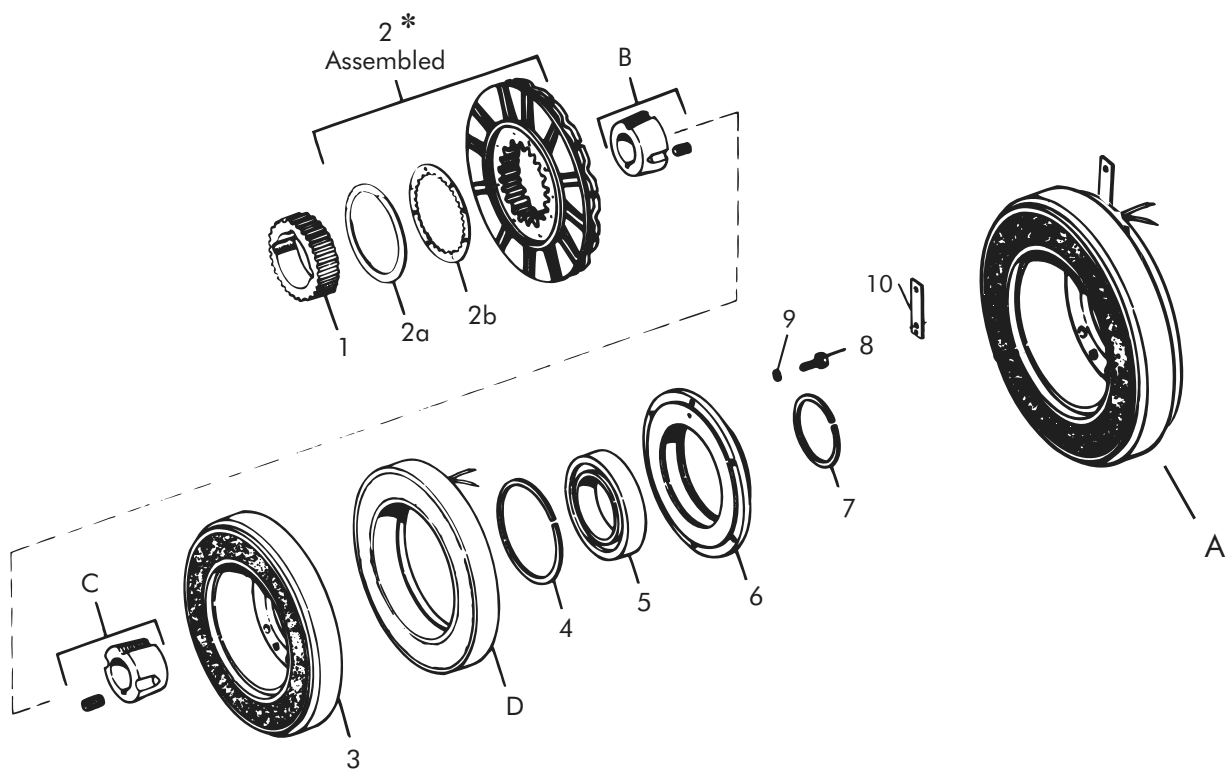
To order, specify: 1, Armature Hub 1, Armature Plate Assembly
 1, Taper Bushing (1615) of required Bore size 1, Taper Bushing (1610) of required Bore size
 1, Bearing Mounted Rotor and Field of required Voltage

For controls, see Section K.

Sold & Serviced By:

 Toll Free Phone (877) SERV098
 Toll Free Fax (877) SERV099
 www.electromate.com
 sales@electromate.com

Clutch Coupling – Replacement Parts



Replacement Parts

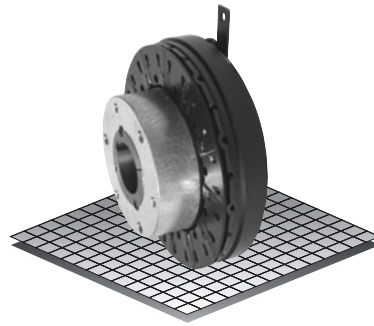
Item	Qty.	Description	Part No.	Item	Qty.	Description	Part No.
1	1	Armature Hub	308680	A	1	Rotor and Field	
2	1	Armature Plate Assy. (27 Teeth)	308382-4			24 Volts	308773
2a	1	Ajusto-gap® Spring	326273			90 Volts	308774
2b	1	Drag Spring	326276	B	1	Taper Bushing (1615)	326015-XX
3	1	Rotor Assembly	308820-8	C	1	Taper Bushing (1610)	326642-XX
4	1	Retaining Ring (Internal)	RY-20042	D	1	Field	
5	1	Bearing	RY-20047			24 Volts	308733-4
6	1	Field Mounting Hub	308752			90 Volts	308734-4
7	1	Retaining Ring (External)	RY-20037				
8	6	Screw	DY-14764				
9	6	Washers	DY-4366				
10	1	Support Arm	326549				
11	1	Pin (not shown)	RY-20094				

* Current design armatures are solid.

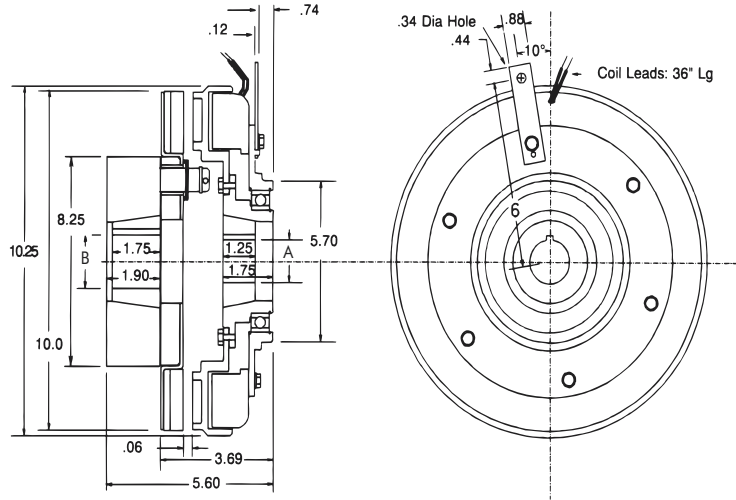
Clutch Coupling

Model

● 310



- ▶ Stationary Field
- ▶ Bearing Mounted
- ▶ Pin Drive



Bushing 2517

Bore "B"	Keyway	Part No.
1/2"	.500 .125 x .062	326039 - 1
9/16"	.562 .125 x .062	326039 - 2
5/8"	.625 .187 x .093	326039 - 3
11/16"	.687 .187 x .093	326039 - 4
3/4"	.750 .187 x .093	326039 - 5
13/16"	.812 .187 x .093	326039 - 6
7/8"	.875 .187 x .093	326039 - 7
15/16"	.937 .250 x .125	326039 - 8
1"	1.000 .250 x .125	326039 - 9
1-1/16"	1.062 .250 x .125	326039 - 10
1-1/8"	1.125 .250 x .125	326039 - 11
1-3/16"	1.187 .250 x .125	326039 - 12
1-1/4"	1.250 .250 x .125	326039 - 13
1-5/16"	1.312 .312 x .156	326039 - 14
1-3/8"	1.375 .312 x .156	326039 - 15
1-7/16"	1.437 .375 x .187	326039 - 16
1-1/2"	1.500 .375 x .187	326039 - 17
1-9/16"	1.562 .375 x .187	326039 - 18
1-5/8"	1.625 .375 x .187	326039 - 19
1-11/16"	1.687 .375 x .187	326039 - 20
1-3/4"	1.750 .375 x .187	326039 - 21
1-13/16"	1.812 .500 x .250	326039 - 22
1-7/8"	1.875 .500 x .250	326039 - 23
1-15/16"	1.937 .500 x .250	326039 - 24
2"	2.000 .500 x .250	326039 - 25
2-1/16"	2.062 .500 x .250	326039 - 26
2-1/8"	2.125 .500 x .250	326039 - 27
2-3/16"	2.187 .500 x .250	326039 - 28
2-1/4"	2.250 .500 x .250	326039 - 29
2-5/16"	2.312 .625 x .187	326039 - 30
2-3/8"	2.375 .625 x .187	326039 - 31
2-7/16"	2.437 .625 x .187	326039 - 32
2-1/2"	2.500 .625 x .187	326039 - 33

Bushing 2012

Bore "A"	Keyway	Part No.
1/2"	.500 .125 x .062	326167 - 8
9/16"	.562 .125 x .062	326167 - 9
5/8"	.625 .187 x .093	326167 - 10
11/16"	.687 .187 x .093	326167 - 11
3/4"	.750 .187 x .093	326167 - 12
13/16"	.812 .187 x .093	326167 - 13
7/8"	.875 .187 x .093	326167 - 14
15/16"	.937 .250 x .125	326167 - 15
1"	1.000 .250 x .125	326167 - 16
1-1/16"	1.062 .250 x .125	326167 - 17
1-1/8"	1.125 .250 x .125	326167 - 18
1-3/16"	1.187 .250 x .125	326167 - 19
1-1/4"	1.250 .250 x .125	326167 - 7
1-5/16"	1.312 .312 x .156	326167 - 20
1-3/8"	1.375 .312 x .156	326167 - 6
1-7/16"	1.437 .375 x .187	326167 - 21
1-1/2"	1.500 .375 x .187	326167 - 1
1-9/16"	1.562 .375 x .187	326167 - 22
1-5/8"	1.625 .375 x .187	326167 - 2
1-11/16"	1.687 .375 x .187	326167 - 23
1-3/4"	1.750 .375 x .187	326167 - 3
1-13/16"	1.812 .500 x .250	326167 - 24
1-7/8"	1.875 .500 x .250	326167 - 4
1-15/16"	1.937 .500 x .187	326167 - 25
2"	2.000 .500 x .187	326167 - 5

Technical Data and Torque (In. Lb.)

Model No.	Wt. Lbs.	Static Torque in. lb.	Max. Speed RPM	Coil Voltage vdc	* Rated Current amps	RPM							
						0	300	600	900	1200	1500	1800	2400
310	29.4	3600	2400	90	.59	3600	3144	2616	2088	1788	1596	1416	1044

* Rated Current for 90v.

Refer to Section M for torque and heat dissipation curves. Customer must maintain concentricity between shafts within .010.

Order Parts for Assembly No. FC310155

	Armature Hub	Armature Plate Assembly	(2517) Taper Bushing	Bearing Mounted Rotor & Field	(2012) Taper Bushing	Ajusto-gap® Accessory
24 Volts	310450	310380	326039-XX	310773	326167-XX	326075
90 Volts	310450	310380	326039-XX	310774	326167-XX	326075

To order, specify:
 1, Armature Hub
 1, Taper Bushing (2517) of required Bore size
 1, Bearing Mounted Rotor and Field of required Voltage

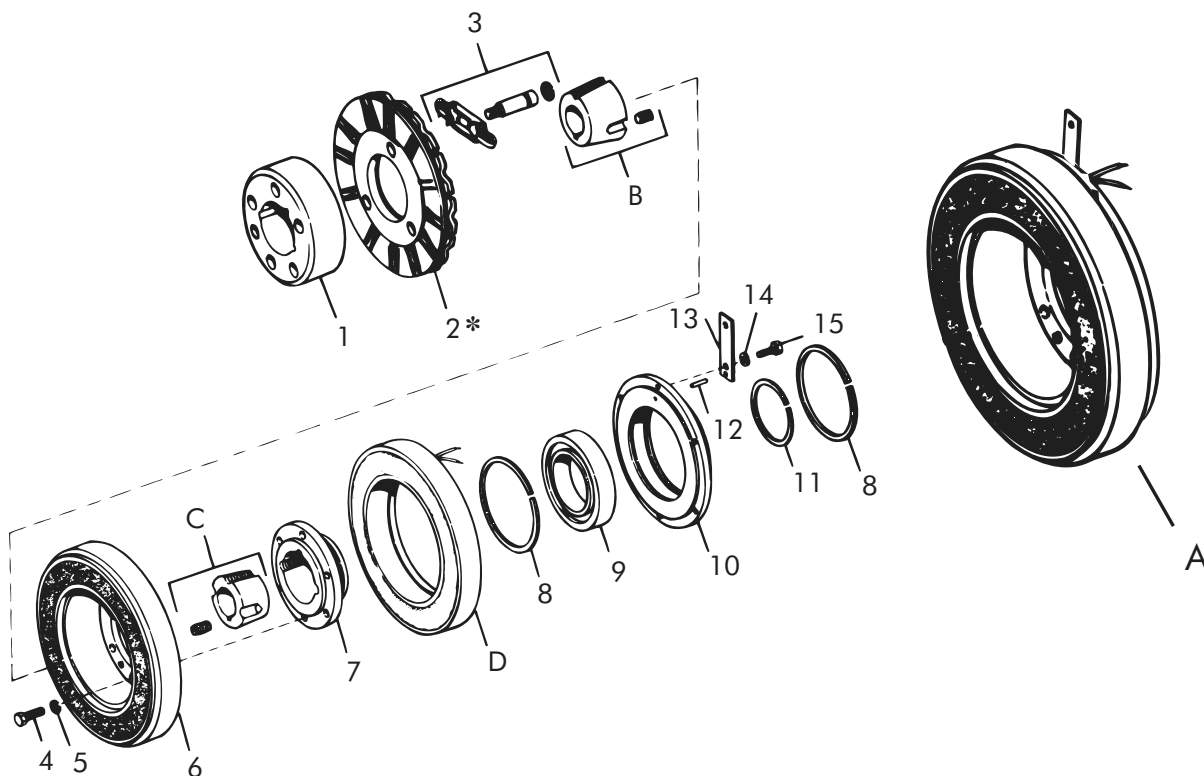
1, Armature Plate Assembly
 1, Taper Bushing (2012) of required Bore size
 1, Ajusto-gap® Accessory

For controls, see Section K.

Sold & Serviced By:

Toll Free Phone (877) SERV098
 Toll Free Fax (877) SERV099
www.electromate.com
sales@electromate.com

Clutch Coupling – Replacement Parts



Replacement Parts

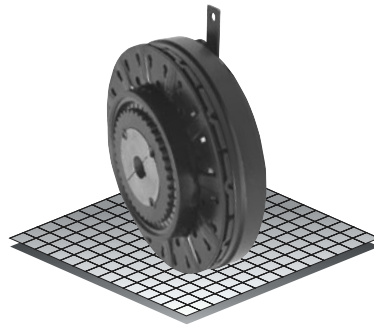
Item	Qty.	Description	Part No.	Item	Qty.	Description	Part No.
1	1	Armature Hub	310450	14	6	Lock Washer	DY-4366
2	1	Armature Plate Assembly	310380	15	6	Screw	DY-14764
3	1	Adjusto-gap® Accessory	326075	A	1	Bearing Mounted Rotor and Field	
3a	3	Drive Pin	326008			24 Volts	310773
3b	3	Spring	326149			90 Volts	310774
3c	3	Retaining Ring (External)	DY-10572	B	1	Taper Bushing (2517)	326039-XX
4	6	Hex Head Cap Screw	DY-211	C	1	Taper Bushing (2012)	326167-XX
5	6	Lock Washer	DY-18	D	1	Field	
6	1	Rotor Assembly	310820-2			24 Volts	310733-3
7	1	Rotor Hub	310753			90 Volts	310734-3
8	2	Retaining Ring (Internal)	DY-11574				
9	1	Bearing	DY-15269				
10	1	Field Mounting Hub	310752-1				
11	1	Retaining Ring (External)	DY-15270				
12	1	Roll Pin	DY-13213				
13	1	Support Arm	326549				

* Current design armatures are solid.

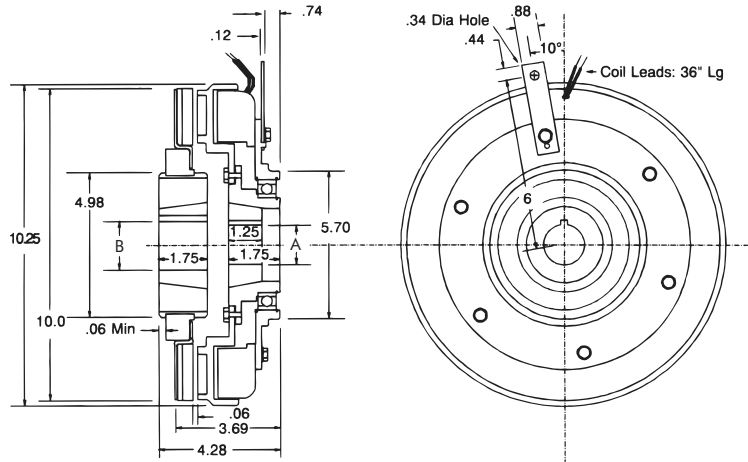
Clutch Coupling

Model

● 310



- ▶ Stationary Field
- ▶ Bearing Mounted
- ▶ Spline Drive



Bushing 2517

Bore "B"	Keyway	Part No.
1/2"	.500 .125 x .062	326039 - 1
9/16"	.562 .125 x .062	326039 - 2
5/8"	.625 .187 x .093	326039 - 3
11/16"	.687 .187 x .093	326039 - 4
3/4"	.750 .187 x .093	326039 - 5
13/16"	.812 .187 x .093	326039 - 6
7/8"	.875 .187 x .093	326039 - 7
15/16"	.937 .250 x .125	326039 - 8
1"	1.000 .250 x .125	326039 - 9
1-1/16"	1.062 .250 x .125	326039 - 10
1-1/8"	1.125 .250 x .125	326039 - 11
1-3/16"	1.187 .250 x .125	326039 - 12
1-1/4"	1.250 .250 x .125	326039 - 13
1-5/16"	1.312 .312 x .156	326039 - 14
1-3/8"	1.375 .312 x .156	326039 - 15
1-7/16"	1.437 .375 x .187	326039 - 16
1-1/2"	1.500 .375 x .187	326039 - 17
1-9/16"	1.562 .375 x .187	326039 - 18
1-5/8"	1.625 .375 x .187	326039 - 19
1-11/16"	1.687 .375 x .187	326039 - 20
1-3/4"	1.750 .375 x .187	326039 - 21
1-13/16"	1.812 .500 x .250	326039 - 22
1-7/8"	1.875 .500 x .250	326039 - 23
1-15/16"	1.937 .500 x .250	326039 - 24
2"	2.000 .500 x .250	326039 - 25
2-1/16"	2.062 .500 x .250	326039 - 26
2-1/8"	2.125 .500 x .250	326039 - 27
2-3/16"	2.187 .500 x .250	326039 - 28
2-1/4"	2.250 .500 x .250	326039 - 29
2-5/16"	2.312 .625 x .187	326039 - 30
2-3/8"	2.375 .625 x .187	326039 - 31
2-7/16"	2.437 .625 x .187	326039 - 32
2-1/2"	2.500 .625 x .187	326039 - 33

Bushing 2012

Bore "A"	Keyway	Part No.
1/2"	.500 .125 x .062	326167 - 8
9/16"	.562 .125 x .062	326167 - 9
5/8"	.625 .187 x .093	326167 - 10
11/16"	.687 .187 x .093	326167 - 11
3/4"	.750 .187 x .093	326167 - 12
13/16"	.812 .187 x .093	326167 - 13
7/8"	.875 .187 x .093	326167 - 14
15/16"	.937 .250 x .125	326167 - 15
1"	1.000 .250 x .125	326167 - 16
1-1/16"	1.062 .250 x .125	326167 - 17
1-1/8"	1.125 .250 x .125	326167 - 18
1-3/16"	1.187 .250 x .125	326167 - 19
1-1/4"	1.250 .250 x .125	326167 - 7
1-5/16"	1.312 .312 x .156	326167 - 20
1-3/8"	1.375 .312 x .156	326167 - 6
1-7/16"	1.437 .375 x .187	326167 - 21
1-1/2"	1.500 .375 x .187	326167 - 1
1-9/16"	1.562 .375 x .187	326167 - 22
1-5/8"	1.625 .375 x .187	326167 - 2
1-11/16"	1.687 .375 x .187	326167 - 23
1-3/4"	1.750 .375 x .187	326167 - 3
1-13/16"	1.812 .500 x .250	326167 - 24
1-7/8"	1.875 .500 x .250	326167 - 4
1-15/16"	1.937 .500 x .187	326167 - 25
2"	2.000 .500 x .187	326167 - 5

Technical Data and Torque (In. Lb.)

Model No.	Wt. Lbs.	Static Torque in. lb.	Max. Speed RPM	Coil Voltage vdc	* Rated Current amps	RPM							
						0	300	600	900	1200	1500	1800	2400
310	28	3600	2400	90	.59	3600	3144	2616	2088	1788	1596	1416	1044

* Rated Current for 90v.

Refer to Section M for torque and heat dissipation curves. Customer must maintain concentricity between shafts within .010.

Order Parts for Assembly No. FC310158

	Armature Hub	Armature Plate Assembly	(2517) Taper Bushing	Bearing Mounted Rotor & Field	(2012) Taper Bushing
24 Volts	310680	310383-13	326039-XX	310773	326167-XX
90 Volts	310680	310383-13	326039-XX	310774	326167-XX

To order, specify: 1, Armature Hub 1, Bearing Mounted Rotor and Field of required Voltage
 1, Armature Plate Assembly 1, Taper Bushing (2012) of required Bore size
 1, Taper Bushing (2517) of required Bore size

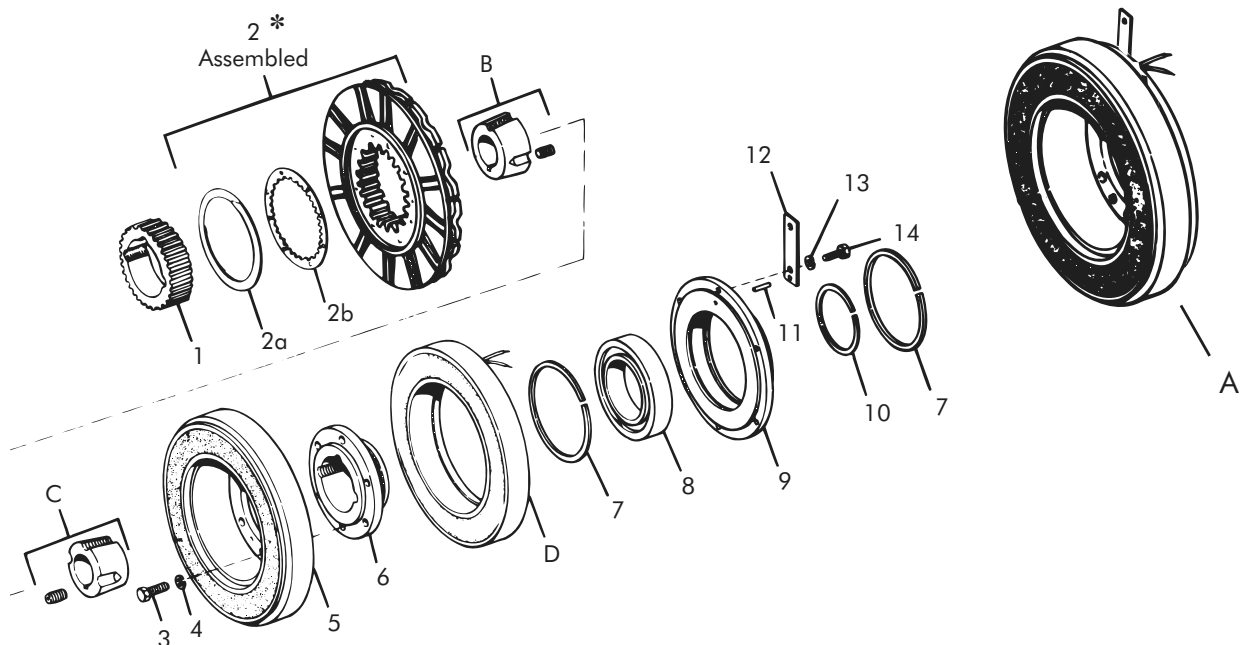
For controls, see Section K.

Sold & Serviced By:



Toll Free Phone (877) SERV098
 Toll Free Fax (877) SERV099
www.electromate.com
sales@electromate.com

Clutch Coupling – Replacement Parts



Replacement Parts

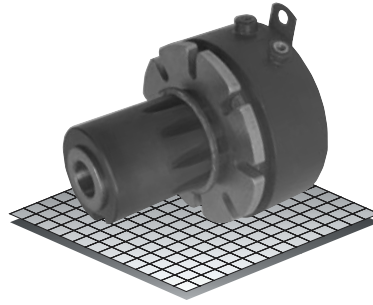
Item	Qty.	Description	Part No.	Item	Qty.	Description	Part No.
1	1	Armature Hub	310680	14	6	Screw	DY-14764
2	1	Armature Plate Assy. (39 Teeth)	310383-13	A	1	Bearing Mounted Rotor and Field	
2a	1	Ajusto-gap® Spring	326970			24 Volts	310773
2b	3	Drag Spring	326277			90 Volts	310774
3	6	Hex Head Cap Screw	DY-211	B	1	Taper Bushing (2517)	326039-XX
4	6	Lock Washer	DY-18	C	1	Taper Bushing (2012)	326167-XX
5	1	Rotor Assembly	310820-2	D	1	Field	
6	1	Rotor Hub	310753			24 Volts	310733-3
7	2	Retaining Ring (Internal)	DY-11574			90 Volts	310734-3
8	1	Bearing	DY-15269				
9	1	Field Mounting Hub	310752-1				
10	1	Retaining Ring (External)	DY-15270				
11	1	Roll Pin	DY-13213				
12	1	Support Arm	326549				
13	6	Lock Washer	DY-4366				

* Current design armatures are solid.

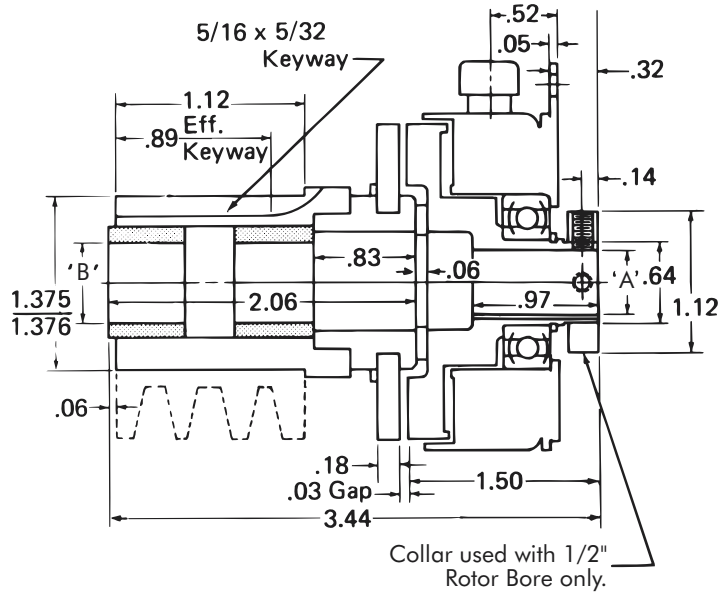
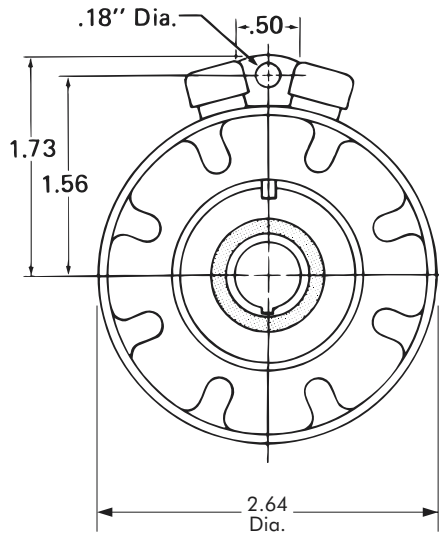
Clutch

Model

● 303



- ▶ Stationary Field
- ▶ Bearing Mounted
- ▶ Spline Drive
- ▶ Extended Hub



Customer to supply set collar/retaining device to maintain axial position of extended hub on shaft.

Bore "B"	
1/2"	
Bore "A"	Keyway
1/2"	.125 x .062

Technical Data and Torque (In. Lb.)

Model No.	Wt. Lbs.	Static Torque in. lb.	Max. Speed RPM	Coil Voltage vdc	* Rated Current amps	RPM										
						0	300	600	900	1200	1500	1800	2400	3000	3600	
303	1.2	60	3600	90	.11	60	53	48	43	42	41	38	34	32	30	

* Rated Current for 90v.

Refer to Section M for torque and heat dissipation curves.

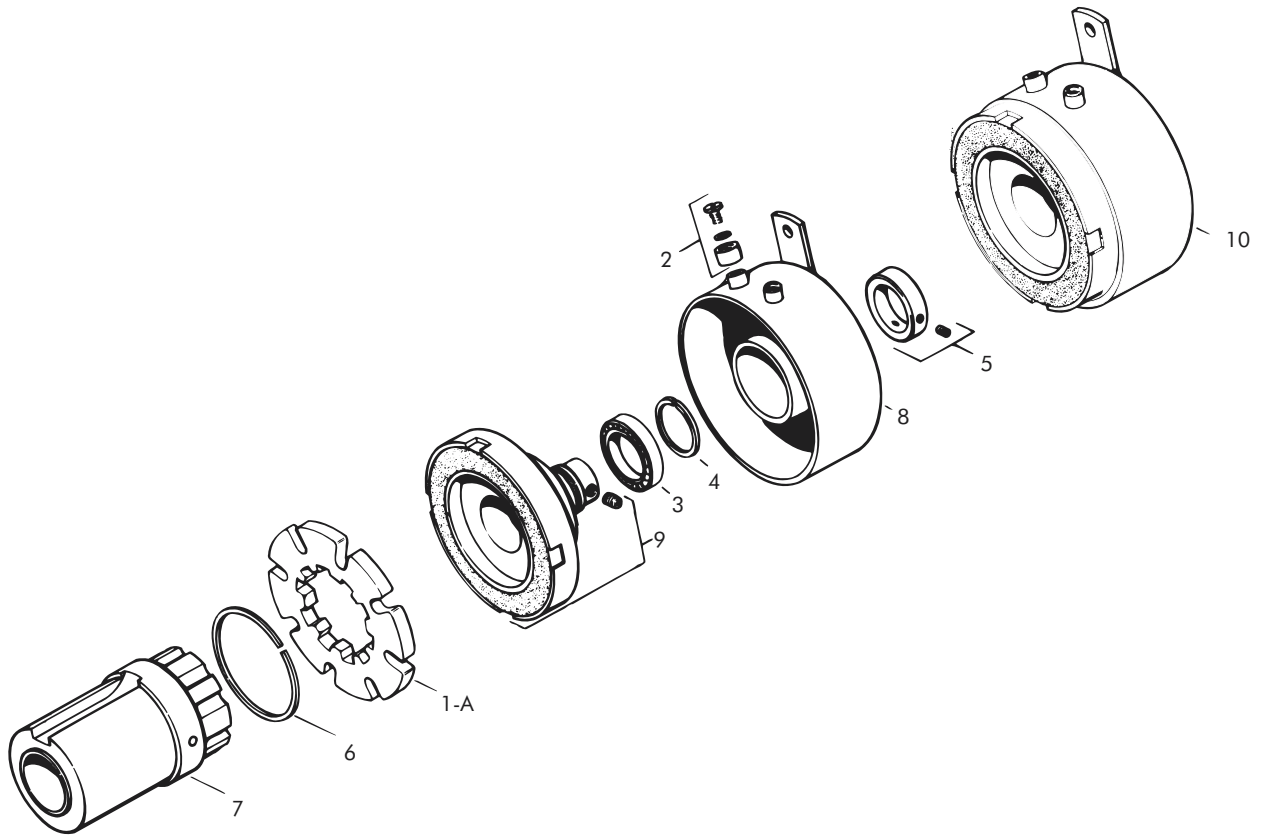
Order Parts for Assembly No. FC303160

	Armature Plate Assembly	Magnet Accessory	Extended Armature Hub	Bearing Mounted Rotor & Field
			1/2" Bore	1/2" Bore
24 Volts	303390-2	326147	304459-6	303773-3
90 Volts	303390-2	326147	304459-6	303774-3

To order, specify: 1, Armature Plate Assembly
 1, Magnet Accessory
 1, Extended Armature Hub of required Bore size
 1, Bearing Mounted Rotor and Field of required Voltage and Bore size

For controls, see Section K.

Clutch – Replacement Parts



Replacement Parts

Item	Qty.	Description	Part No.	Item	Qty.	Description	Part No.
1	1	Armature Plate Assy. (10 Teeth)	303390-2	9	1	Rotor Assembly	
2	1	Magnet Accessory	326147			1/2" Bore	303556-3
3	1	Bearing	DY-9436	10	1	Bearing Mounted Rotor and Field	
4	1	Retaining Ring (External)	DY-1581			24 Volts, 1/2" Bore	303773-3
5	1	Collar (furnished with .500 bore)	326304-1			90 Volts, 1/2" Bore	303774-3
6	1	Retaining Ring	DY-15393				
7	1	Extended Armature Hub Assembly 1/2" Bore	304459-6				
8	1	Field					
		24 Volts	303333				
		90 Volts	303334				

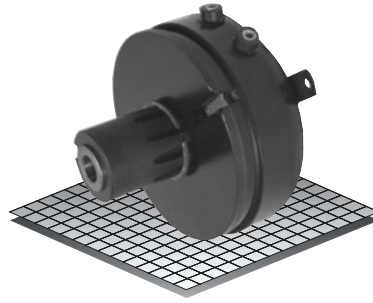
Sold & Serviced By:


Toll Free Phone (877) SERV098
 Toll Free Fax (877) SERV099
www.electromate.com
sales@electromate.com

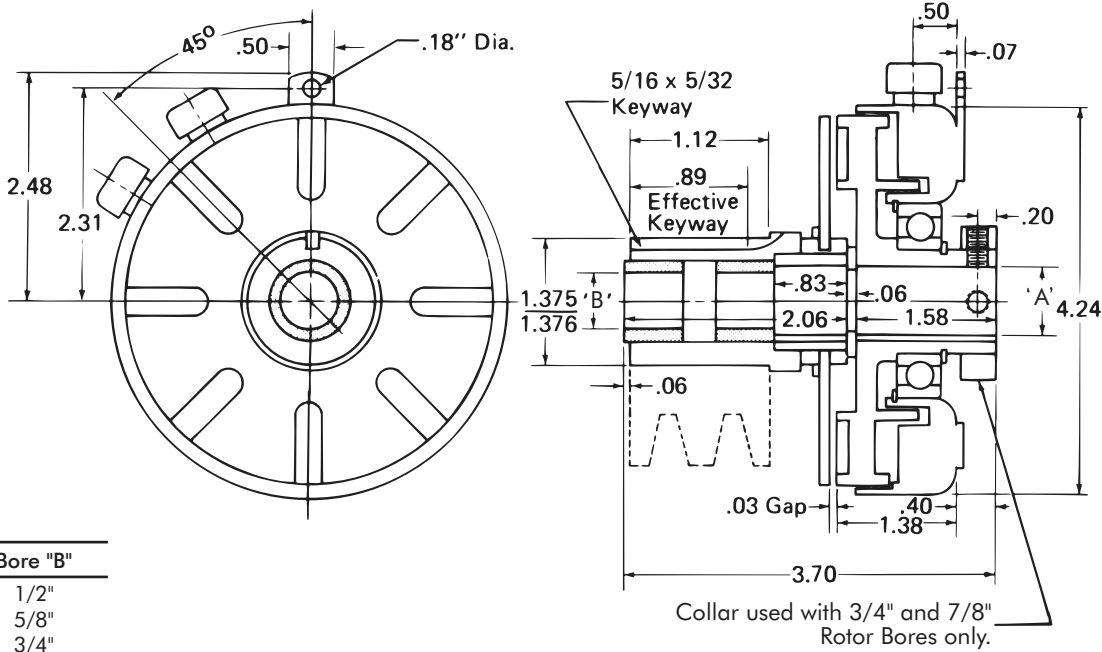
Clutch

Model

● 304



- ▶ Stationary Field
- ▶ Bearing Mounted
- ▶ Spline Drive
- ▶ Extended Hub



Bore "B"
1/2"
5/8"
3/4"

Bore "A"	Keyway
1/2"	.125 x .062
5/8"	.187 x .094
3/4"	.187 x .094
7/8"	.187 x .094

Customer to supply set collar/retaining device to maintain axial position of extended hub on shaft.

Technical Data and Torque (In. Lb.)

Model No.	Wt. Lbs.	Static Torque in. lb.	Max. Speed RPM	Coil Voltage vdc	* Rated Current amps	RPM									
						0	300	600	900	1200	1500	1800	2400	3000	3600
304	3.8	264	3600	90	.13	264	216	192	180	168	156	156	144	132	120

* Rated Current for 90v.
Refer to Section M for torque and heat dissipation curves.

Order Parts for Assembly No. FC304160

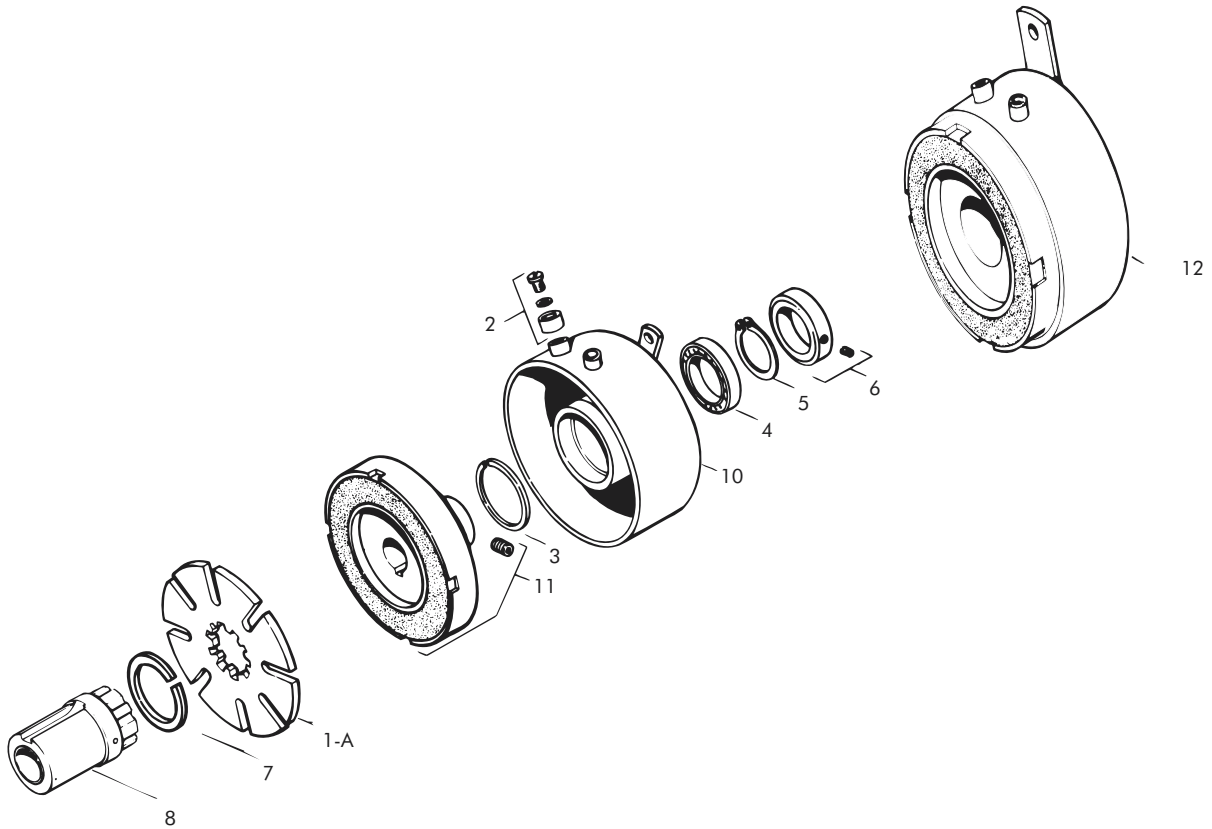
	Armature Plate Assembly	Magnet Accessory	Armature Hub			Bearing Mounted Rotor & Field			
			Bore			Bore			
			1/2"	5/8"	3/4"	1/2"	5/8"	3/4"	7/8"
24 Volts	304390-11	326146-2	304459-6	304459-7	304459-8	304773-1	304773-3	304773-5	304773-6
90 Volts	304390-11	326146-2	304459-6	304459-7	304459-8	304774-1	304774-3	304774-5	304774-6

To order, specify: 1, Armature Plate Assembly
1, Magnet Accessory
1, Extended Armature Hub of required Bore size
1, Bearing Mounted Rotor and Field of required Voltage

For controls, see Section K.

Sold & Serviced By:
ELECTROMATE
Toll Free Phone (877) SERV098
Toll Free Fax (877) SERV099
www.electromate.com
sales@electromate.com

Clutch – Replacement Parts

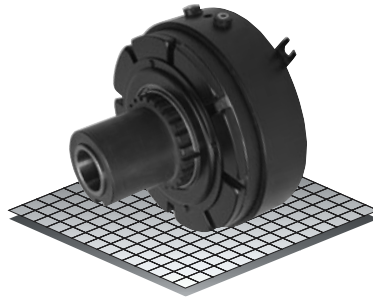


Replacement Parts

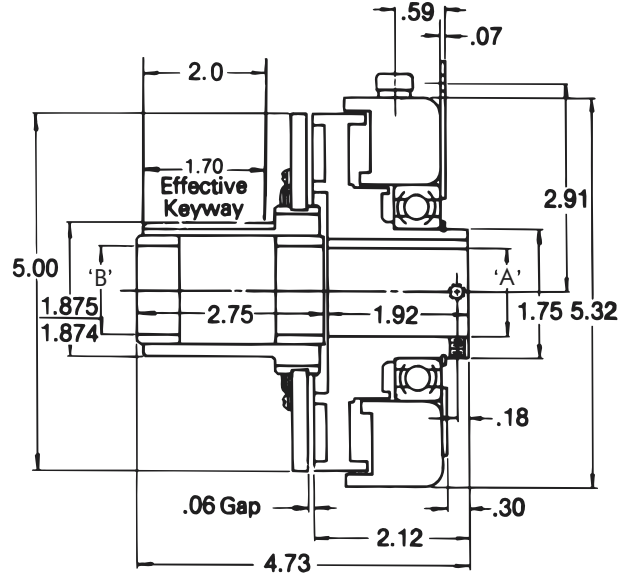
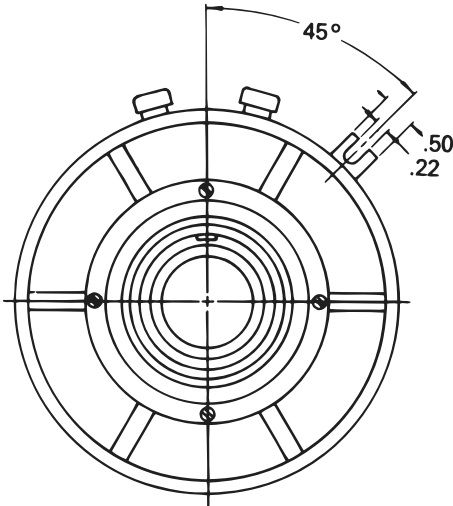
Item	Qty.	Description	Part No.	Item	Qty.	Description	Part No.
1	1	Armature Plate Assy. (10 Teeth)	304390-11	11	1	Rotor Assembly	
2	1	Magnet Accessory	326146-2			1/2" Bore	304556-1
3	1	Retaining Ring (Internal)	DY-10860			5/8" Bore	304556-3
4	1	Bearing	RY-20320			3/4" Bore	304556-5
5	1	Retaining Ring (External)	DY-1102			7/8" Bore	304556-6
6	1	Collar		12	1	Rotor and Field Assembly	
7	1	Retaining Ring	326519-1			24 Volts, 1/2" Bore	304773-1
8	1	Extended Armature Hub Assembly	DY-15393			24 Volts, 5/8" Bore	304773-3
		1/2" Bore	304459-6			24 Volts, 3/4" Bore	304773-5
		5/8" Bore	304459-7			24 Volts, 7/8" Bore	304773-6
		3/4" Bore	304459-8			90 Volts, 1/2" Bore	304774-1
10	1	Field Magnet Assembly				90 Volts, 5/8" Bore	304774-3
		24 Volts	304333			90 Volts, 3/4" Bore	304774-5
		90 Volts	304334			90 Volts, 7/8" Bore	304774-6

Clutch

Model
● 305



- ▶ Stationary Field
- ▶ Bearing Mounted
- ▶ Spline Drive
- ▶ Extended Hub



Customer to supply set collar/retaining device to maintain axial position of extended hub on shaft.

Bore "B"	Keyway
1"	.375 x .187
1-1/4"	.375 x .125*

Bore "A"	Keyway
1"	.250 x .125
1-1/4"	.250 x .125

*Special Rectangular Key Supplied with Hub

Technical Data and Torque (In. Lb.)

Model No.	Wt. Lbs.	Static Torque in. lb.	Max. Speed RPM	Coil Voltage vdc	* Rated Current amps	RPM									
						0	300	600	900	1200	1500	1800	2400	3000	3600
305	4.5	684	3600	90	.40	684	624	564	516	468	420	384	324	288	252

* Rated Current for 90v.
Refer to Section M for torque and heat dissipation curves.

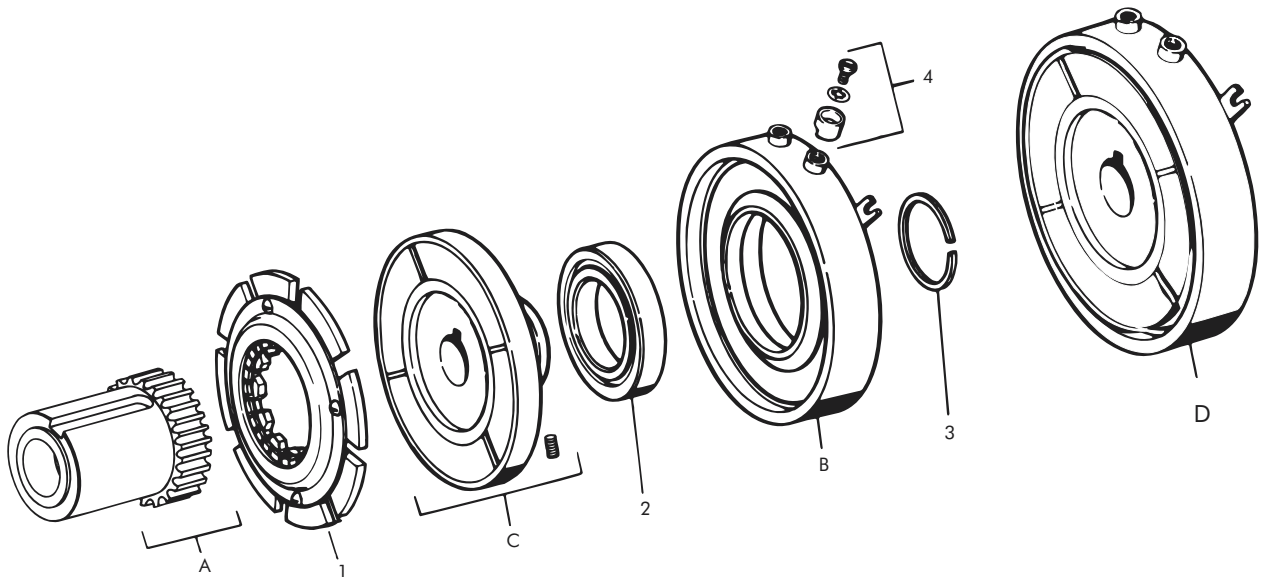
Order Parts for Assembly No. FC305160

Bore	Bearing Mounted Rotor & Field		Armature Plate Assembly	Armature Hub
	24 Volts	90 Volts		
1"	305773-4	305774-4	305396-1	305458-3
1-1/4"	305773-6	305774-6	305396-1	305458-7

To order, specify: 1, Bearing Mounted Rotor and Field of required Voltage and Bore size
1, Armature Plate Assembly
1, Armature Hub of required Bore size

For controls, see Section K.

Clutch – Replacement Parts



Replacement Parts

Item	Qty.	Description	Part No.	Item	Qty.	Description	Part No.
1	1	Armature Plate Assy. (24 Teeth)	305396-1	D	1	Bearing Mounted Rotor and Field	
2	1	Bearing	DY-6953			24 Volts, 3/4" Bore	305773-1
3	1	Retaining Ring (External)	DY-12712			24 Volts, 7/8" Bore	305773-2
4	1	Magnet Accessory	326146-1			24 Volts, 1" Bore	305773-4
A	1	Armature Hub				24 Volts, 1-1/8" Bore	305773-5
		1" Bore	305458-3			24 Volts, 1-1/4" Bore	305773-6
		1-1/4" Bore	305458-7			90 Volts, 3/4" Bore	305774-1
B	1	Field				90 Volts, 7/8" Bore	305774-2
		24 Volts	305333			90 Volts, 1" Bore	305774-4
		90 Volts	305334			90 Volts, 1-1/8" Bore	305774-5
C	1	Rotor Assembly				90 Volts, 1-1/4" Bore	305774-6
		3/4" Bore	305556-1				
		7/8" Bore	305556-2				
		1" Bore	305556-4				
		1-1/8" Bore	305556-5				
		1-1/4" Bore	305556-6				

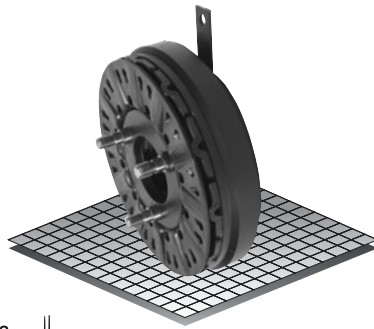
Sold & Serviced By:


Toll Free Phone (877) SERV098
 Toll Free Fax (877) SERV099
www.electromate.com
sales@electromate.com

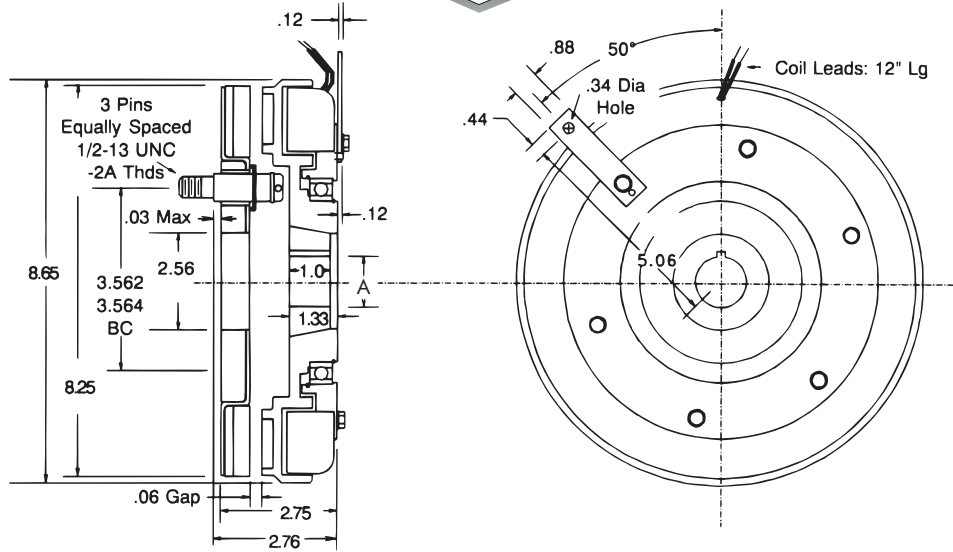
Clutch

Model

● 308



- ▶ Stationary Field
- ▶ Bearing Mounted
- ▶ Pin Drive



Bushing 1610

Bore "A"		Keyway	Part No.
1/2"	.500	.125 x .062	326642 - 1
9/16"	.562	.125 x .062	326642 - 2
5/8"	.625	.187 x .093	326642 - 3
11/16"	.687	.187 x .093	326642 - 4
3/4"	.750	.187 x .093	326642 - 5
13/16"	.812	.187 x .093	326642 - 6
7/8"	.875	.187 x .093	326642 - 7
15/16"	.937	.250 x .125	326642 - 8
1"	1.000	.250 x .125	326642 - 9
1-1/16"	1.062	.250 x .125	326642 - 10
1-1/8"	1.125	.250 x .125	326642 - 11
1-3/16"	1.187	.250 x .125	326642 - 12
1-1/4"	1.250	.250 x .125	326642 - 13
1-5/16"	1.312	.312 x .156	326642 - 14
1-3/8"	1.375	.312 x .156	326642 - 15
1-7/16"	1.437	.375 x .187	326642 - 16
1-1/2"	1.500	.375 x .187	326642 - 17
1-9/16"	1.562	.375 x .187	326642 - 18
1-5/8"	1.625	.375 x .187	326642 - 19

Technical Data and Torque (In. Lb.)

Model No.	Wt. Lbs.	Static Torque in. lb.	Max. Speed RPM	Coil Voltage vdc	*Rated Current amps	RPM									
						0	300	600	900	1200	1500	1800	2400	3000	3600
308	21.3	2100	3600	90	.57	2100	1848	1596	1428	1344	1260	1128	888	720	588

* Rated Current for 90v.

Refer to Section M for torque and heat dissipation curves.

Order Parts for Assembly No. FC308152-3

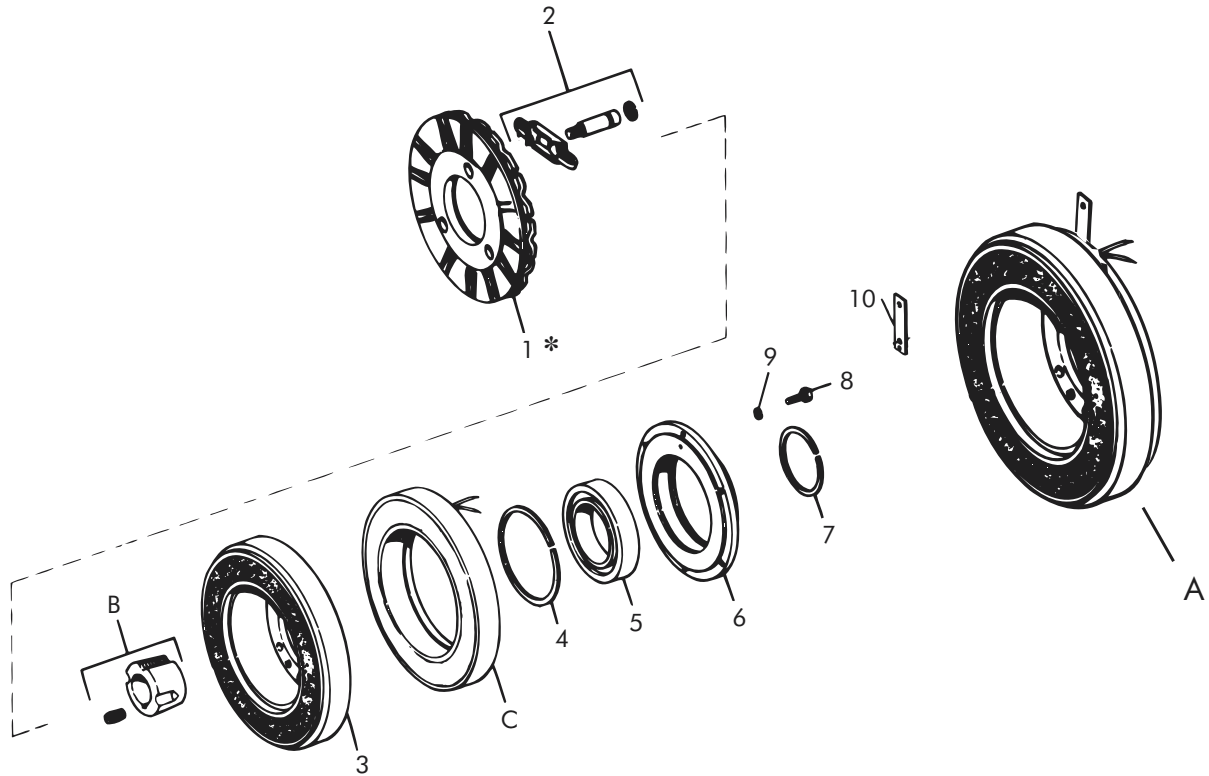
	Armature Plate Assembly	Bearing Mounted Rotor & Field	(1610) Taper Bushing	Ajusto-gap® Accessory
24 Volts	308380	308773	326642-XX	326075
90 Volts	308380	308774	326642-XX	326075

To order, specify: 1, Armature Plate Assembly
 1, Bearing Mounted Rotor and Field of required Voltage
 1, Taper Bushing (1610) of required Bore size
 1, Ajusto-gap® Accessory

For controls, see Section K.

Sold & Serviced By:
ELECTROMATE
 Toll Free Phone (877) SERV098
 Toll Free Fax (877) SERV099
www.electromate.com
sales@electromate.com

Clutch – Replacement Parts



Replacement Parts

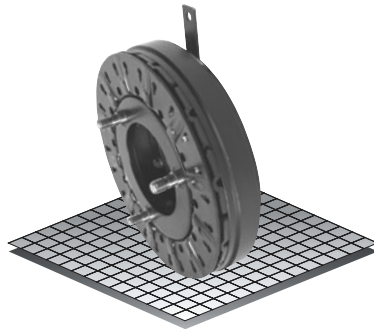
Item	Qty.	Description	Part No.	Item	Qty.	Description	Part No.
1	1	Armature Plate Assembly	308380	11	1	Pin (not shown)	RY-20094
2	1	Adjusto-gap® Accessory	326075	A	1	Bearing Mounted Rotor and Field	
2a	3	Drive Pin	326008			24 Volts	308773
2b	3	Spring	326149			90 Volts	308774
2c	3	Retaining Ring (External)	DY-10572	B	1	Taper Bushing (1610)	326642-XX
3	1	Rotor Assembly	308820-8	C	1	Field	
4	1	Retaining Ring (Internal)	RY-20042			24 Volts	308733-4
5	1	Bearing	RY-20047			90 Volts	308734-4
6	1	Field Mounting Hub	308752				
7	1	Retaining Ring (External)	RY-20037				
8	6	Screw	DY-14764				
9	6	Washers	DY-4366				
10	1	Support Arm	326549				

* Current design armatures are solid.

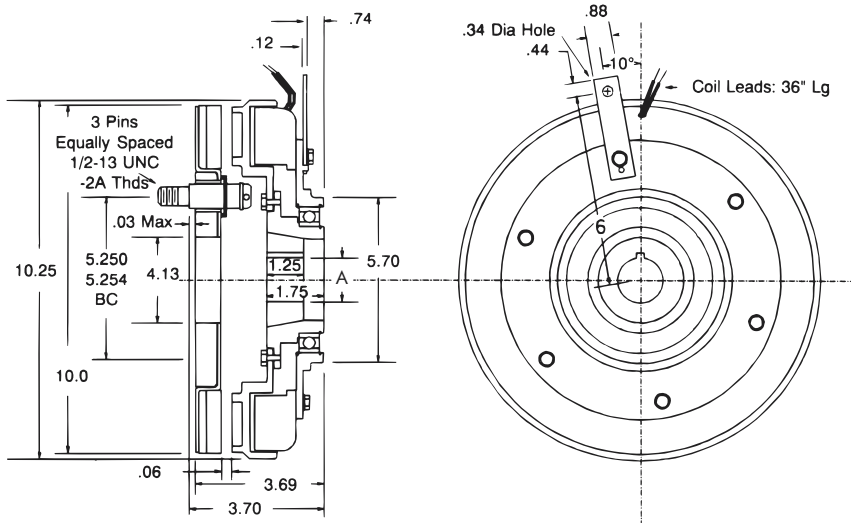
Clutch

Model

● 310



- ▶ Stationary Field
- ▶ Bearing Mounted
- ▶ Pin Drive



Bushing 2012

Bore "A"	Keyway	Part No.
1/2"	.500 .125 x .062	326167 - 8
9/16"	.562 .125 x .062	326167 - 9
5/8"	.625 .187 x .093	326167 - 10
11/16"	.687 .187 x .093	326167 - 11
3/4"	.750 .187 x .093	326167 - 12
13/16"	.812 .187 x .093	326167 - 13
7/8"	.875 .187 x .093	326167 - 14
15/16"	.937 .250 x .125	326167 - 15
1"	1.000 .250 x .125	326167 - 16
1-1/16"	1.062 .250 x .125	326167 - 17
1-1/8"	1.125 .250 x .125	326167 - 18
1-3/16"	1.187 .250 x .125	326167 - 19
1-1/4"	1.250 .250 x .125	326167 - 7
1-5/16"	1.312 .312 x .156	326167 - 20
1-3/8"	1.375 .312 x .156	326167 - 6
1-7/16"	1.437 .375 x .187	326167 - 21
1-1/2"	1.500 .375 x .187	326167 - 1
1-9/16"	1.562 .375 x .187	326167 - 22
1-5/8"	1.625 .375 x .187	326167 - 2
1-11/16"	1.687 .375 x .187	326167 - 23
1-3/4"	1.750 .375 x .187	326167 - 3
1-13/16"	1.812 .500 x .250	326167 - 24
1-7/8"	1.875 .500 x .250	326167 - 4
1-15/16"	1.937 .500 x .187	326167 - 25
2"	2.000 .500 x .187	326167 - 5

Technical Data and Torque (In. Lb.)

Model No.	Wt. Lbs.	Static Torque in. lb.	Max. Speed RPM	Coil Voltage vdc	* Rated Current amps	RPM							
						0	300	600	900	1200	1500	1800	2400
310	29.4	3600	2400	90	.59	3600	3144	2616	2088	1788	1596	1416	1044

* Rated Current for 90v.

Refer to Section M for torque and heat dissipation curves.

Order Parts for Assembly No. FC310152

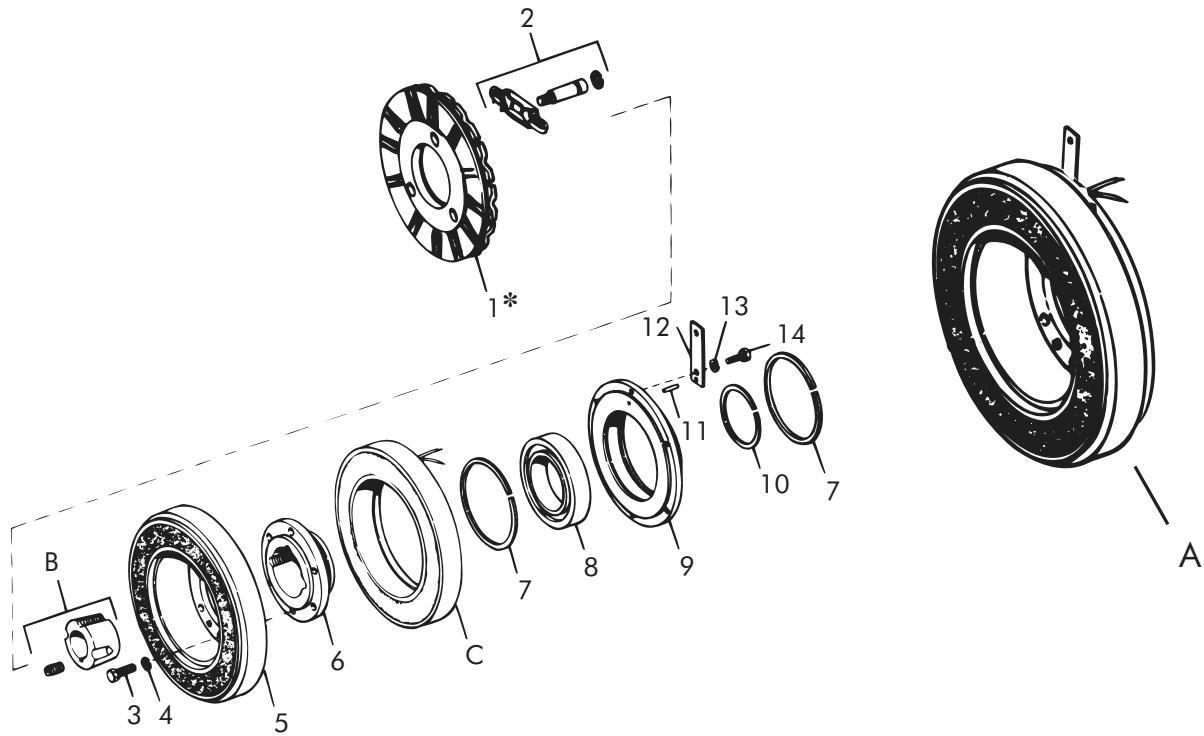
	Armature Plate Assembly	Bearing Mounted Rotor & Field	(2012) Taper Bushing	Ajusto-gap® Accessory
24 Volts	310380	310773	326167-XX	326075
90 Volts	310380	310774	326167-XX	326075

To order, specify: 1, Armature Plate Assembly 1, Bearing Mounted Rotor and Field of required Voltage 1, Taper Bushing (2012) of required Bore size 1, Ajusto-gap® Accessory

For controls, see Section K.

Sold & Serviced By:
ELECTROMATE
 Toll Free Phone (877) SERV098
 Toll Free Fax (877) SERV099
www.electromate.com
sales@electromate.com

Clutch – Replacement Parts



Replacement Parts

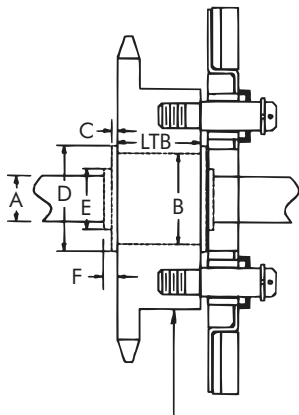
Item	Qty.	Description	Part No.	Item	Qty.	Description	Part No.
1	1	Armature Plate Assembly	310380	13	6	Lock Washer	DY-4366
2	1	Ajusto-gap® Accessory	326075	14	6	Screw	DY-14764
2a	3	Drive Pin	326008	A	1	Bearing Mounted Rotor and Field	
2b	3	Spring	326149			24 Volts	310773
2c	3	Retaining Ring	DY-10572			90 Volts	310774
3	6	Screw	DY-211	B	1	Taper Bushing (2012)	326167-XX
4	6	Lock Washer	DY-18	C	1	Field	
5	1	Rotor Assembly	310820-2			24 Volts	310733-3
6	1	Rotor Hub	310753			90 Volts	310734-3
7	2	Retaining Ring (Internal)	DY-11574				
8	1	Bearing	DY-15269				
9	1	Field Mounting Hub	310752-1				
10	1	Retaining Ring (External)	DY-15270				
11	1	Roll Pin	DY-13213				
12	1	Support Arm	326549				

* Current design armatures are solid.

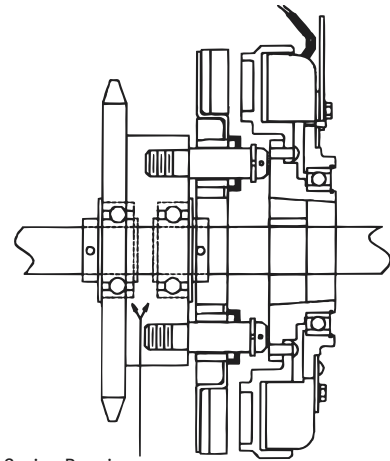
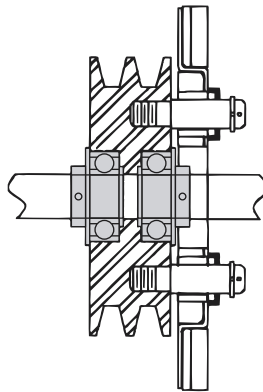
Clutches

Bearings

For use with extended inner ring bearing assemblies. Requires spacer between bearing inner race and Clutch Rotor/Field Assembly to maintain armature gap.



Minimum Hub Diameter

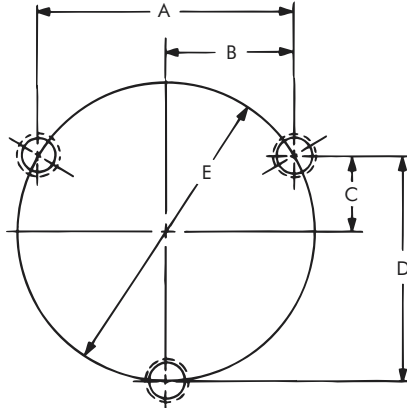


2 ER Series Bearings

Customer's sprocket, sheave, etc. drilled for drive pins with bearings installed.

Shaft A	Housing Bore B	Min LTB	C	D	E	F
308 Minimum Hub Diameter - 4-1/2"						
7/8"	2.0471/2.0466	1-17/32"	3/64"	2-17/64"	1-3/8"	5/8"
15/16"	2.0471/2.0466	1-17/32"	3/64"	2-17/64"	1-3/8"	5/8"
1"	2.0471/2.0466	1-17/32"	3/64"	2-17/64"	1-3/8"	5/8"
1-1/16"	2.4408/2.4403	1-25/32"	1/16"	2-21/32"	1-19/32"	5/8"
1-1/8"	2.4408/2.4403	1-25/32"	1/16"	2-21/32"	1-19/32"	5/8"
1-3/16"	2.4408/2.4403	1-25/32"	1/16"	2-21/32"	1-19/32"	5/8"
310 Minimum Hub Diameter - 6-1/2"						
1-1/4"	2.8345/2.8340	1-31/32"	1/16"	3-5/64"	1-55/64"	23/32"
1-5/16"	2.8345/2.8340	1-31/32"	1/16"	3-5/64"	1-55/64"	23/32"
1-3/8"	2.8345/2.8340	1-31/32"	1/16"	3-5/64"	1-55/64"	23/32"
1-7/16"	2.8345/2.8340	1-31/32"	1/16"	3-5/64"	1-55/64"	23/32"
1-1/2"	3.1495/3.1490	2-1/4"	1/16"	3-31/32"	2-1/6"	53/64"
1-9/16"	3.1495/3.1490	2-1/4"	1/16"	3-31/32"	2-1/6"	53/64"
1-5/8"	3.3464/3.3458	2-1/4"	1/16"	3-19/32"	2-19/64"	53/64"
1-11/16"	3.3464/3.3458	2-1/4"	1/16"	3-19/32"	2-19/64"	53/64"
1-3/4"	3.3464/3.3458	2-1/4"	1/16"	3-19/32"	2-19/64"	53/64"

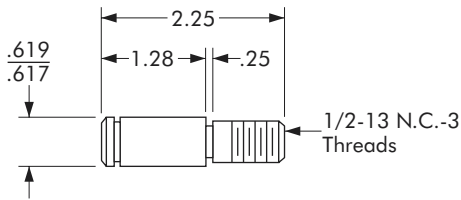
Hub Pin Hole Mounting Dimensions



3 Pin Mounting
Models 308 and 310

Drive Pin Hole Mounting Dimensions (Inches)

Model No.	A	B	C	D	E	No. of Pins
308	3.085 / 3.087	1.542 / 1.544	.890 / .892	2.671 / 2.673	3.562 / 3.564	3
310	4.547 / 4.549	2.273 / 2.275	1.312 / 1.314	3.938 / 3.940	5.250 / 5.254	3



Models 308 & 310

NOTE:

Chordal dimensions must be held for all chords between pin holes. Pins must be square with the plane of the mounting surface and magnet mounting.

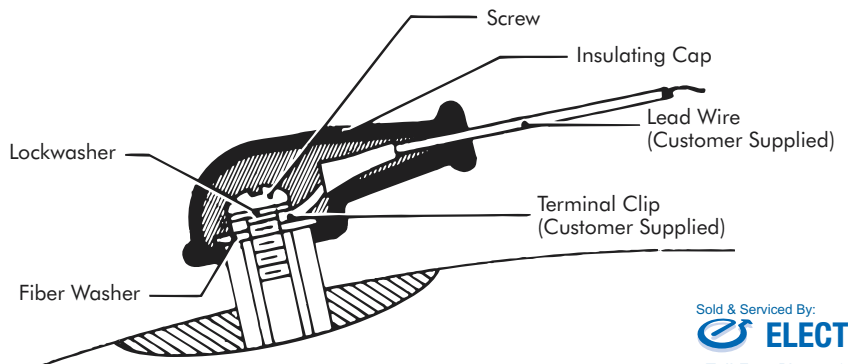
Drill .422 inch diameter hole to a sufficient depth for 1/2-13 NC-3 x 1 inch minimum full thread. Ream .500/.501 inch to .375 inch depth. Ream to concentric with tap.

Terminal Insulating Kit

Used With

● 305 through 310

The terminal insulating kit is used in environments where it is either desirable or necessary to protect terminal connectors.



Model No.	Accessory Group
305 - 310	326297

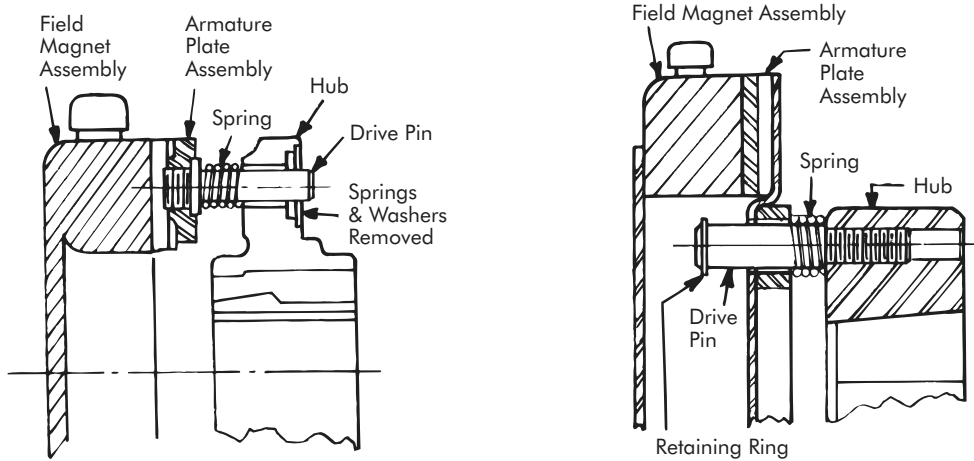
Clutch Couplings and Clutches

Zero Air Gap Accessory Kit

Used With

- 305 through 310

The purpose of this kit is to hold the armature plate in contact with the friction face to reduce pull-in time. It is recommended where the engagement time is critical; usually high cycle rate applications with the D2950 control. Also use this kit when a slow start or stop is required with the D2750 control. Since the friction surfaces are always in contact a rubbing noise is created. The design of your machine may increase or decrease this noise.



Model No.	Accessory Group
305	326303
308 - 315	326240