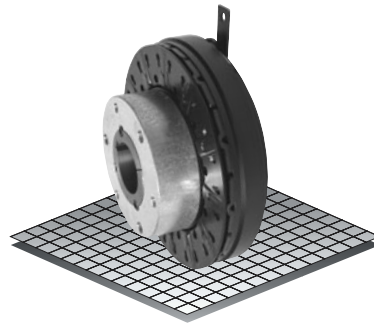


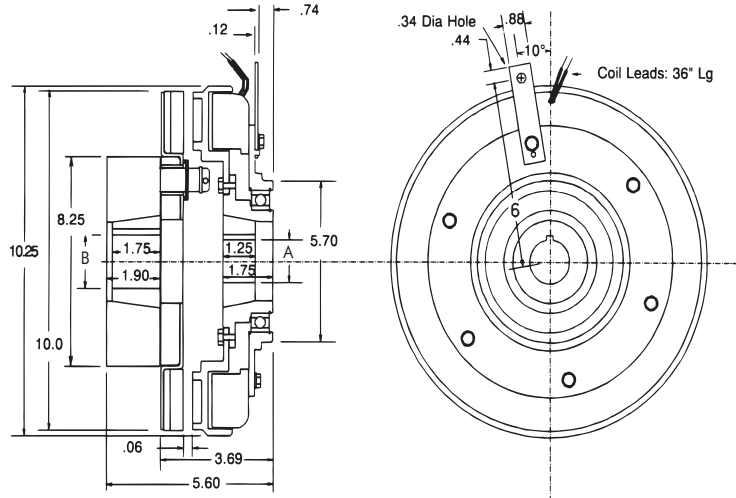
Clutch Coupling

Model

● 310



- ▶ Stationary Field
- ▶ Bearing Mounted
- ▶ Pin Drive



Bushing 2517

Bore "B"	Keyway	Part No.
1/2"	.500 .125 x .062	326039 - 1
9/16"	.562 .125 x .062	326039 - 2
5/8"	.625 .187 x .093	326039 - 3
11/16"	.687 .187 x .093	326039 - 4
3/4"	.750 .187 x .093	326039 - 5
13/16"	.812 .187 x .093	326039 - 6
7/8"	.875 .187 x .093	326039 - 7
15/16"	.937 .250 x .125	326039 - 8
1"	1.000 .250 x .125	326039 - 9
1-1/16"	1.062 .250 x .125	326039 - 10
1-1/8"	1.125 .250 x .125	326039 - 11
1-3/16"	1.187 .250 x .125	326039 - 12
1-1/4"	1.250 .250 x .125	326039 - 13
1-5/16"	1.312 .312 x .156	326039 - 14
1-3/8"	1.375 .312 x .156	326039 - 15
1-7/16"	1.437 .375 x .187	326039 - 16
1-1/2"	1.500 .375 x .187	326039 - 17
1-9/16"	1.562 .375 x .187	326039 - 18
1-5/8"	1.625 .375 x .187	326039 - 19
1-11/16"	1.687 .375 x .187	326039 - 20
1-3/4"	1.750 .375 x .187	326039 - 21
1-13/16"	1.812 .500 x .250	326039 - 22
1-7/8"	1.875 .500 x .250	326039 - 23
1-15/16"	1.937 .500 x .250	326039 - 24
2"	2.000 .500 x .250	326039 - 25
2-1/16"	2.062 .500 x .250	326039 - 26
2-1/8"	2.125 .500 x .250	326039 - 27
2-3/16"	2.187 .500 x .250	326039 - 28
2-1/4"	2.250 .500 x .250	326039 - 29
2-5/16"	2.312 .625 x .187	326039 - 30
2-3/8"	2.375 .625 x .187	326039 - 31
2-7/16"	2.437 .625 x .187	326039 - 32
2-1/2"	2.500 .625 x .187	326039 - 33

Bushing 2012

Bore "A"	Keyway	Part No.
1/2"	.500 .125 x .062	326167 - 8
9/16"	.562 .125 x .062	326167 - 9
5/8"	.625 .187 x .093	326167 - 10
11/16"	.687 .187 x .093	326167 - 11
3/4"	.750 .187 x .093	326167 - 12
13/16"	.812 .187 x .093	326167 - 13
7/8"	.875 .187 x .093	326167 - 14
15/16"	.937 .250 x .125	326167 - 15
1"	1.000 .250 x .125	326167 - 16
1-1/16"	1.062 .250 x .125	326167 - 17
1-1/8"	1.125 .250 x .125	326167 - 18
1-3/16"	1.187 .250 x .125	326167 - 19
1-1/4"	1.250 .250 x .125	326167 - 7
1-5/16"	1.312 .312 x .156	326167 - 20
1-3/8"	1.375 .312 x .156	326167 - 6
1-7/16"	1.437 .375 x .187	326167 - 21
1-1/2"	1.500 .375 x .187	326167 - 1
1-9/16"	1.562 .375 x .187	326167 - 22
1-5/8"	1.625 .375 x .187	326167 - 2
1-11/16"	1.687 .375 x .187	326167 - 23
1-3/4"	1.750 .375 x .187	326167 - 3
1-13/16"	1.812 .500 x .250	326167 - 24
1-7/8"	1.875 .500 x .250	326167 - 4
1-15/16"	1.937 .500 x .187	326167 - 25
2"	2.000 .500 x .187	326167 - 5

Technical Data and Torque (In. Lb.)

Model No.	Wt. Lbs.	Static Torque in. lb.	Max. Speed RPM	Coil Voltage vdc	* Rated Current amps	RPM							
						0	300	600	900	1200	1500	1800	2400
310	29.4	3600	2400	90	.59	3600	3144	2616	2088	1788	1596	1416	1044

* Rated Current for 90v.

Refer to Section M for torque and heat dissipation curves. Customer must maintain concentricity between shafts within .010.

Order Parts for Assembly No. FC310155

	Armature Hub	Armature Plate Assembly	(2517) Taper Bushing	Bearing Mounted Rotor & Field	(2012) Taper Bushing	Ajusto-gap® Accessory
24 Volts	310450	310380	326039-XX	310773	326167-XX	326075
90 Volts	310450	310380	326039-XX	310774	326167-XX	326075

To order, specify:
 1, Armature Hub
 1, Taper Bushing (2517) of required Bore size
 1, Bearing Mounted Rotor and Field of required Voltage

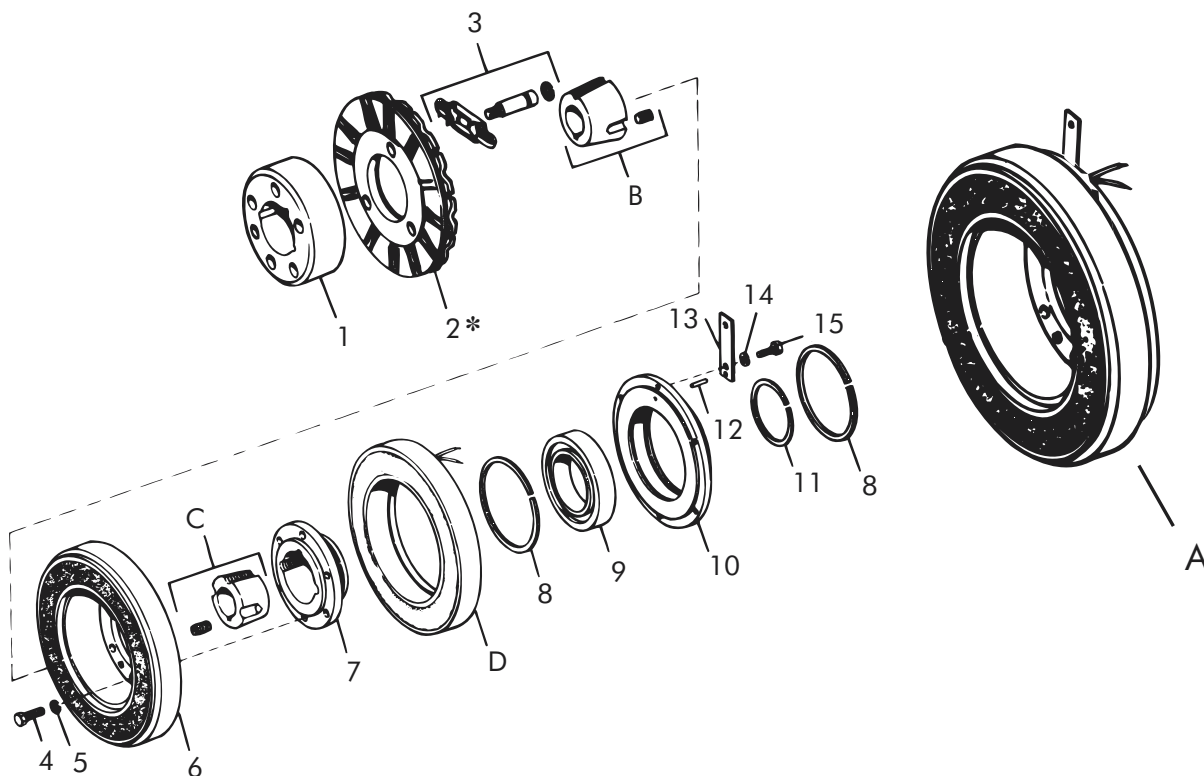
1, Armature Plate Assembly
 1, Taper Bushing (2012) of required Bore size
 1, Ajusto-gap® Accessory

For controls, see Section K.

Sold & Serviced By:

Toll Free Phone (877) SERV098
 Toll Free Fax (877) SERV099
www.electromate.com
sales@electromate.com

Clutch Coupling – Replacement Parts



Replacement Parts

Item	Qty.	Description	Part No.	Item	Qty.	Description	Part No.
1	1	Armature Hub	310450	14	6	Lock Washer	DY-4366
2	1	Armature Plate Assembly	310380	15	6	Screw	DY-14764
3	1	Adjusto-gap® Accessory	326075	A	1	Bearing Mounted Rotor and Field	
3a	3	Drive Pin	326008			24 Volts	310773
3b	3	Spring	326149			90 Volts	310774
3c	3	Retaining Ring (External)	DY-10572	B	1	Taper Bushing (2517)	326039-XX
4	6	Hex Head Cap Screw	DY-211	C	1	Taper Bushing (2012)	326167-XX
5	6	Lock Washer	DY-18	D	1	Field	
6	1	Rotor Assembly	310820-2			24 Volts	310733-3
7	1	Rotor Hub	310753			90 Volts	310734-3
8	2	Retaining Ring (Internal)	DY-11574				
9	1	Bearing	DY-15269				
10	1	Field Mounting Hub	310752-1				
11	1	Retaining Ring (External)	DY-15270				
12	1	Roll Pin	DY-13213				
13	1	Support Arm	326549				

* Current design armatures are solid.