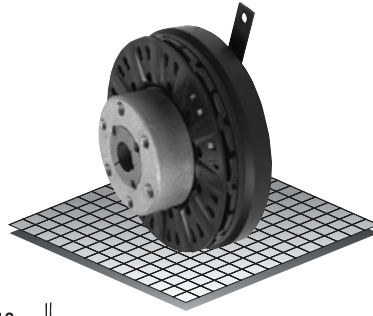


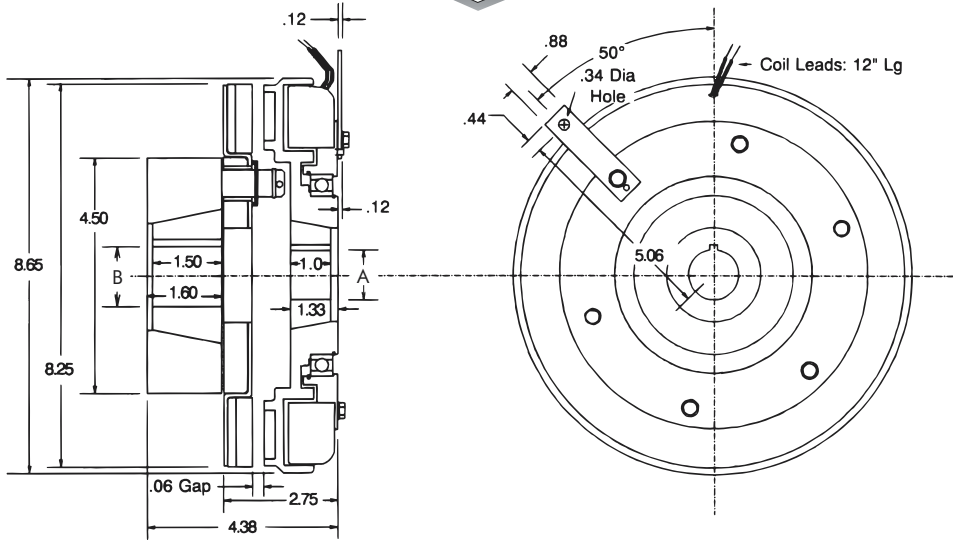
Clutch Coupling

Model

● 308



- ▶ Stationary Field
- ▶ Bearing Mounted
- ▶ Pin Drive



Bushing 1615

Bore "B"	Keyway	Part No.
1/2"	.500 .125 x .062	326015 - 1
9/16"	.562 .125 x .062	326015 - 2
5/8"	.625 .187 x .093	326015 - 3
11/16"	.687 .187 x .093	326015 - 4
3/4"	.750 .187 x .093	326015 - 5
13/16"	.812 .187 x .093	326015 - 6
7/8"	.875 .187 x .093	326015 - 7
15/16"	.937 .250 x .125	326015 - 8
1"	1.000 .250 x .125	326015 - 9
1-1/16"	1.062 .250 x .125	326015 - 10
1-1/8"	1.125 .250 x .125	326015 - 11
1-3/16"	1.187 .250 x .125	326015 - 12
1-1/4"	1.250 .250 x .125	326015 - 13
1-5/16"	1.312 .312 x .156	326015 - 14
1-3/8"	1.375 .312 x .156	326015 - 15
1-7/16"	1.437 .375 x .187	326015 - 16
1-1/2"	1.500 .375 x .187	326015 - 17
1-9/16"	1.562 .375 x .187	326015 - 18
1-5/8"	1.625 .375 x .187	326015 - 19
*1-3/8"	1.375 .375 x .125	326015 - 20
*1-5/8"	1.625 .375 x .125	326015 - 21

Bushing 1610

Bore "A"	Keyway	Part No.
1/2"	.500 .125 x .062	326642 - 1
9/16"	.562 .125 x .062	326642 - 2
5/8"	.625 .187 x .093	326642 - 3
11/16"	.687 .187 x .093	326642 - 4
3/4"	.750 .187 x .093	326642 - 5
13/16"	.812 .187 x .093	326642 - 6
7/8"	.875 .187 x .093	326642 - 7
15/16"	.937 .250 x .125	326642 - 8
1"	1.000 .250 x .125	326642 - 9
1-1/16"	1.062 .250 x .125	326642 - 10
1-1/8"	1.125 .250 x .125	326642 - 11
1-3/16"	1.187 .250 x .125	326642 - 12
1-1/4"	1.250 .250 x .125	326642 - 13
1-5/16"	1.312 .312 x .156	326642 - 14
1-3/8"	1.375 .312 x .156	326642 - 15
1-7/16"	1.437 .375 x .187	326642 - 16
1-1/2"	1.500 .375 x .187	326642 - 17
1-9/16"	1.562 .375 x .187	326642 - 18
1-5/8"	1.625 .375 x .187	326642 - 19

Technical Data and Torque (In. Lb.)

Model No.	Wt. Lbs.	Static Torque in. lb.	Max. Speed RPM	Coil Voltage vdc	*Rated Current amps	RPM									
						0	300	600	900	1200	1500	1800	2400	3000	3600
308	21.3	2100	3600	90	.57	2100	1848	1596	1428	1344	1260	1128	888	720	588

* Rated Current for 90v.

Refer to Section M for torque and heat dissipation curves. Customer must maintain concentricity between shafts within .010.

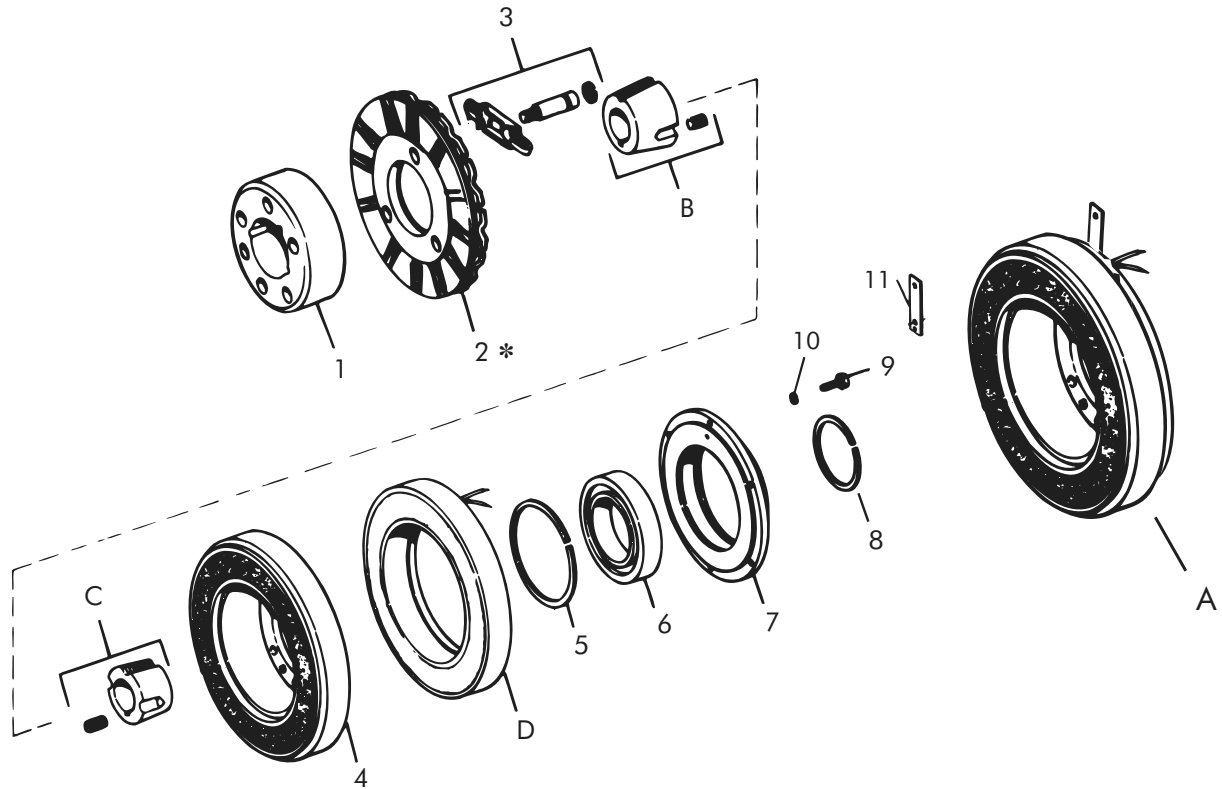
Order Parts for Assembly No. FC308155-3

	Armature Hub	Armature Plate Assembly	(1615) Taper Bushing	Bearing Mounted Rotor & Field	(1610) Taper Bushing	Ajusto-gap® Accessory
24 Volts	308450	308380	326015-XX	308773	326642-XX	326075
90 Volts	308450	308380	326015-XX	308774	326642-XX	326075

To order, specify: 1, Armature Hub
 1, Taper Bushing (1615) of required Bore size
 1, Armature Plate Assembly
 1, Bearing Mounted Rotor and Field of required Voltage
 1, Ajusto-gap® Accessory
 1, Taper Bushing (1610) of required Bore size

For controls, see Section K.

Clutch Coupling – Replacement Parts



Replacement Parts

Item	Qty.	Description	Part No.	Item	Qty.	Description	Part No.
1	1	Armature Hub	308450	12	1	Pin (not shown)	RY-20094
2	1	Armature Plate Assembly	308380	A	1	Bearing Mounted Rotor and Field	
3	1	Ajusto-gap® Accessory	326075			24 Volts	308773
3a	3	Drive Pin	326008			90 Volts	308774
3b	3	Spring	326149	B	1	Taper Bushing (1615)	326015-XX
3c	3	Retaining Ring (External)	DY-10572	C	1	Taper Bushing (1610)	326642-XX
4	1	Rotor Assembly	308820-8	D	1	Field	
5	1	Retaining Ring (Internal)	RY-20042			24 Volts	308733-4
6	1	Bearing	RY-20047			90 Volts	308734-4
7	1	Field Mounting Hub	308752				
8	1	Retaining Ring (External)	RY-20037				
9	6	Screw	DY-14764				
10	6	Washers	DY-4366				
11	1	Support Arm	326549				

* Current design armatures are solid.