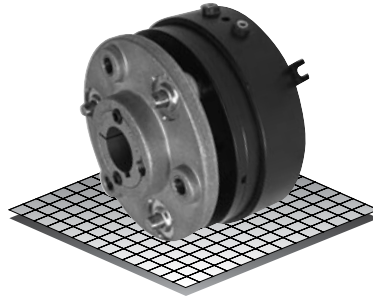


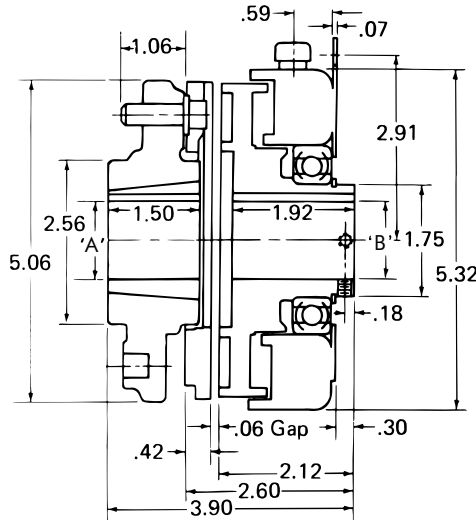
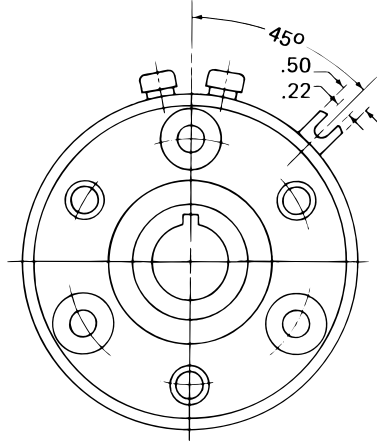
# Clutch Coupling

Model

● 305



- ▶ Stationary Field
- ▶ Bearing Mounted
- ▶ Pin Drive



### Bushing 1215

Bore "A"	Keyway	Part No.
1/2"	.500 .125 x .062	326058 - 1
9/16"	.562 .125 x .062	326058 - 2
5/8"	.625 .187 x .093	326058 - 3
11/16"	.687 .187 x .093	326058 - 4
3/4"	.750 .187 x .093	326058 - 5
13/16"	.812 .187 x .093	326058 - 6
7/8"	.875 .187 x .093	326058 - 7
15/16"	.937 .250 x .125	326058 - 8
1"	1.000 .250 x .125	326058 - 9
1-1/16"	1.062 .250 x .125	326058 - 10
1-1/8"	1.125 .250 x .125	326058 - 11
1-3/16"	1.187 .250 x .125	326058 - 12
1-1/4"	1.250 .250 x .125	326058 - 13

Bore "B"	Keyway
3/4"	.187 x .094
7/8"	.187 x .094
1"	.250 x .125
1-1/8"	.250 x .125
1-1/4"	.250 x .125

### Technical Data and Torque (In. Lb.)

Model No.	Wt. Lbs.	Static Torque in. lb.	Max. Speed RPM	Coil Voltage vdc	* Rated Current amps	RPM									
						0	300	600	900	1200	1500	1800	2400	3000	3600
305	6	684	3600	90	.40	684	624	564	516	468	420	384	324	288	252

\* Rated Current for 90v.

Refer to Section M for torque and heat dissipation curves.

Customer must maintain concentricity between shafts within .010.

### Order Parts for Assembly No. FC305155

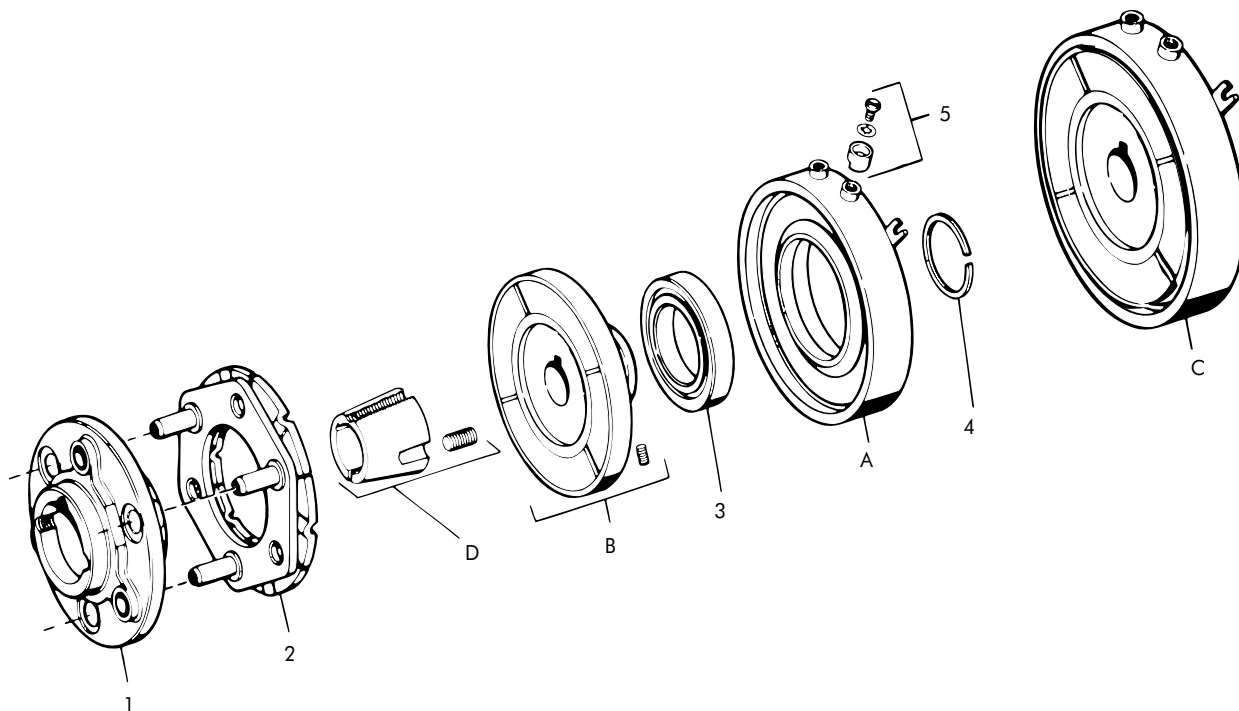
	Armature Plate Assembly	Armature Hub Assembly	Bearing Mounted Rotor & Field					1215 Taper Bushing
			Bore "B"					
			3/4"	7/8"	1"	1-1/8"	1-1/4"	
24 Volts	305381	305450	305773-1	305773-2	305773-4	305773-5	305773-6	326058-XX
90 Volts	305381	305450	305774-1	305774-2	305774-4	305774-5	305774-6	326058-XX

To order, specify:

- 1, Armature Plate Assembly
- 1, Armature Hub Assembly
- 1, Bearing Mounted Rotor and Field of required Voltage and Bore "B" size
- 1, Taper Bushing (1215) of required Bore size.

For controls, see Section K.

# Clutch Coupling – Replacement Parts



## Replacement Parts

Item	Qty.	Description	Part No.	Item	Qty.	Description	Part No.
1	1	Armature Hub Assembly	305450	C	1	Rotor and Field Assembly	
2	1	Armature Plate Assy.	305381			24 Volts, 3/4" Bore	305773-1
3	1	Bearing	DY-6953			24 Volts, 7/8" Bore	305773-2
4	1	Retaining Ring (External)	DY-12712			24 Volts, 1" Bore	305773-4
5	1	Magnet Accessory	326146-1			24 Volts, 1-1/8" Bore	305773-5
A	1	Field				24 Volts, 1-1/4" Bore	305773-6
		24 Volts	305333			90 Volts, 3/4" Bore	305774-1
		90 Volts	305334			90 Volts, 7/8" Bore	305774-2
B	1	Rotor Assembly				90 Volts, 1" Bore	305774-4
		3/4" Bore	305556-1			90 Volts, 1-1/8" Bore	305774-5
		7/8" Bore	305556-2			90 Volts, 1-1/4" Bore	305774-6
		1" Bore	305556-4	D	1	Taper Bushing (1215)	326058-XX
		1-1/8" Bore	305556-5				
		1-1/4" Bore	305556-6				

\* Current design armatures are solid.