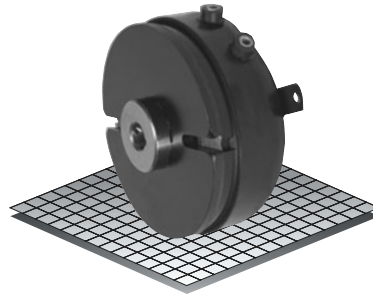


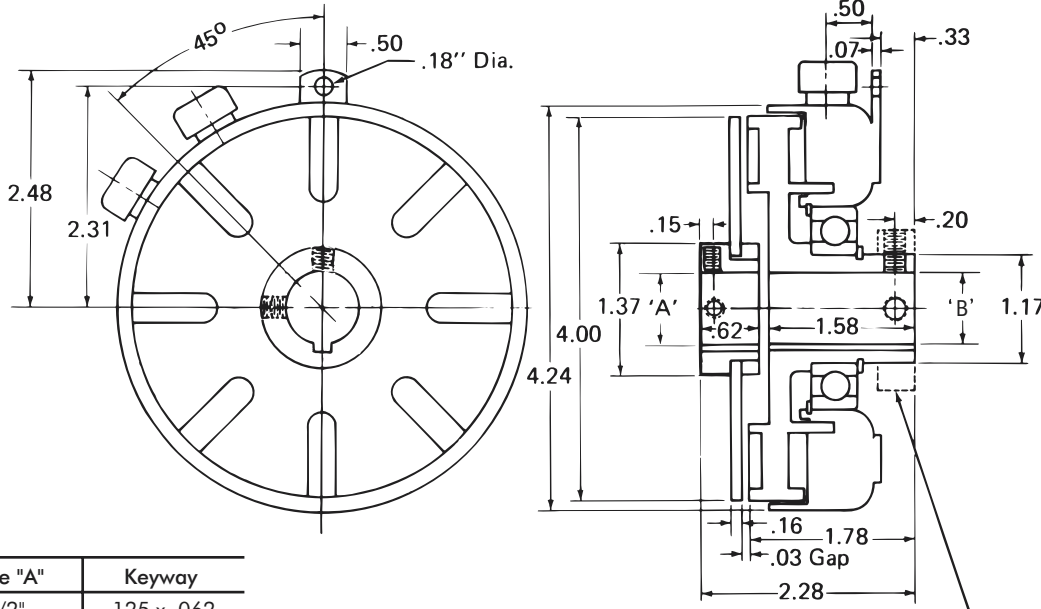
Clutch Coupling

Model

● 304



- ▶ Stationary Field
- ▶ Bearing Mounted
- ▶ Spline Drive



Bore "A"	Keyway
1/2"	.125 x .062
5/8"	.187 x .094
3/4"	.187 x .094
7/8"	.187 x .094
1"	.250 x .125

Bore "B"	Keyway
1/2"	.125 x .062
5/8"	.187 x .094
3/4"	.187 x .094
7/8"	.187 x .094

Technical Data and Torque (In. Lb.)

Model No.	Wt. Lbs.	Static Torque in. lb.	Max. Speed RPM	Coil Voltage vdc	* Rated Current amps	RPM									
						0	300	600	900	1200	1500	1800	2400	3000	3600
304	3.5	264	3600	90	.13	264	216	192	180	168	156	156	144	132	120

* Rated Current for 90v.

Refer to Section M for torque and heat dissipation curves. Refer to Page H-18 for dimensions of Adjusto-gap® styles.

Order Parts for Assembly No. FC304158

	Armature Plate Assembly	Magnet Accessory	Armature Hub Assembly			Bearing Mounted Rotor & Field			
			Bore "A"			Bore "B"			
			1/2"	5/8"	3/4"	1/2"	5/8"	3/4"	7/8"
24 Volts	304390-11	326146-2	303451-3	303451-5	303453-8	304773-1	304773-3	304773-5	304773-6
90 Volts	304390-11	326146-2	303451-3	303451-5	303453-8	304774-1	304774-3	304774-5	304774-6

To order, specify:

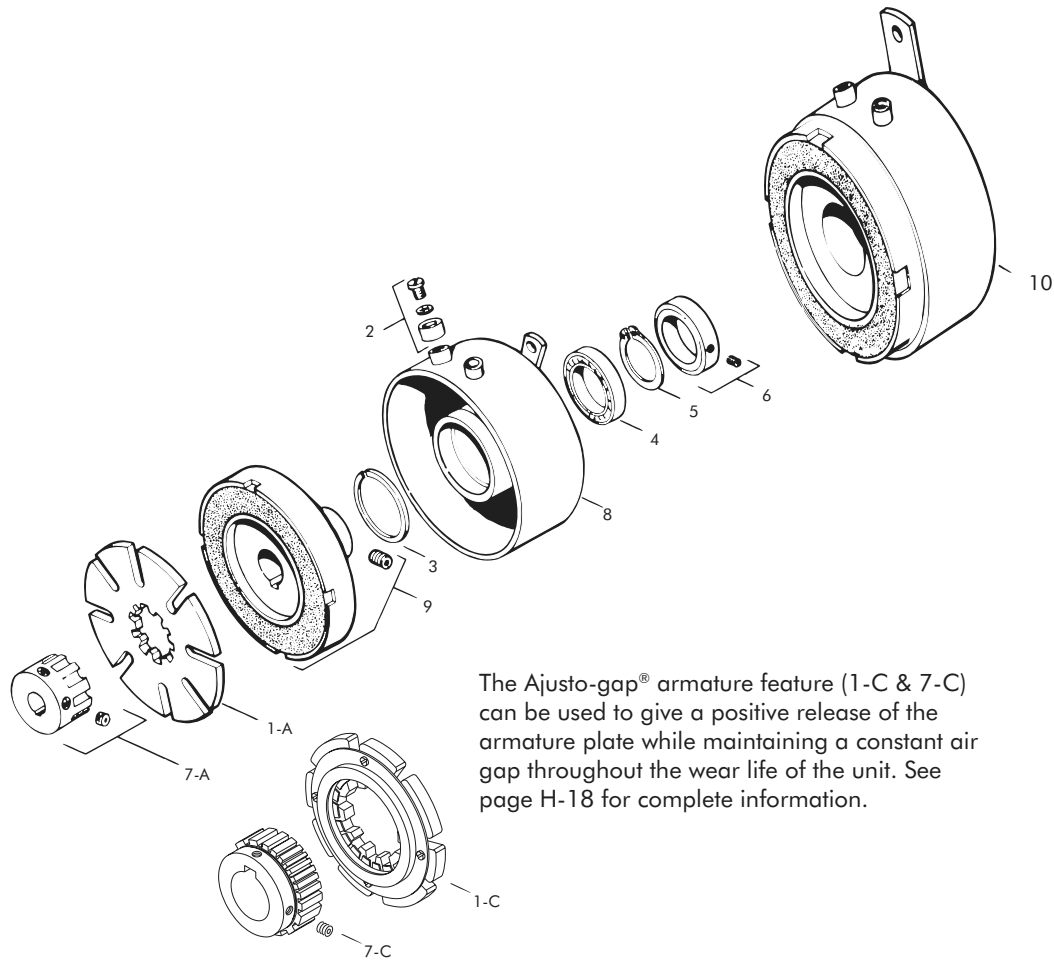
- 1, Armature Plate Assembly
- 1, Magnet Accessory
- 1, Armature Hub Assembly of required Bore "A" size
- 1, Bearing Mounted Rotor and Field Assembly of required Voltage and Bore "B" size

For controls, see Section K.

Sold & Serviced By:

 Toll Free Phone (877) SERV098
 Toll Free Fax (877) SERV099
www.electromate.com
sales@electromate.com

Clutch Coupling – Replacement Parts



The Ajusto-gap® armature feature (1-C & 7-C) can be used to give a positive release of the armature plate while maintaining a constant air gap throughout the wear life of the unit. See page H-18 for complete information.

Replacement Parts

Item	Qty.	Description	Part No.	Item	Qty.	Description	Part No.
1-A	1	Armature Plate Assembly (10 Teeth) 1/2" through 3/4" bores	304390-11	8	1	Field	
1-C	1	Ajusto-gap® Arm. Plate Assy. 7/8" through 1" bores	304396-8			24 Volts	304333
2	1	Magnet Accessory	326146-2			90 Volts	304334
3	1	Retaining Ring (Internal)	DY-10860	9	1	Rotor Assembly	
4	1	Bearing	RY-20320			1/2" Bore	304556-1
5	1	Retaining Ring (External)	DY-1102			5/8" Bore	304556-3
6	1	Collar				3/4" Bore	304556-5
7-A	1	Armature Hub Assembly	326519-1			7/8" Bore	304556-6
		1/2" Bore	303451-3	10	1	Rotor and Field Assembly	
		5/8" Bore	303451-5			24 Volts, 1/2" Bore	304773-1
		3/4" Bore	303453-8			24 Volts, 5/8" Bore	304773-3
7-C	1	Ajusto-gap® Hub Assembly				24 Volts, 3/4" Bore	304773-5
		7/8"	304465-4			24 Volts, 7/8" Bore	304773-6
		1"	304465-5			90 Volts, 1/2" Bore	304774-1
						90 Volts, 5/8" Bore	304774-3
						90 Volts, 3/4" Bore	304774-5
						90 Volts, 7/8" Bore	304774-6