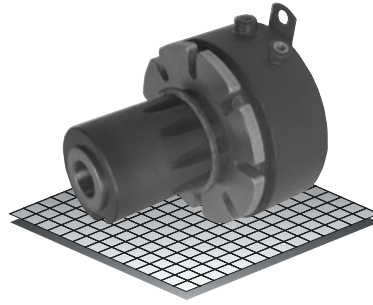


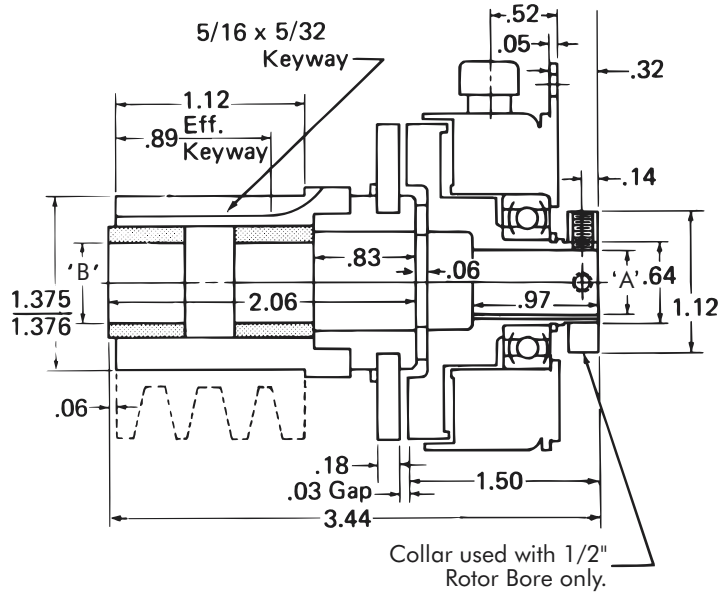
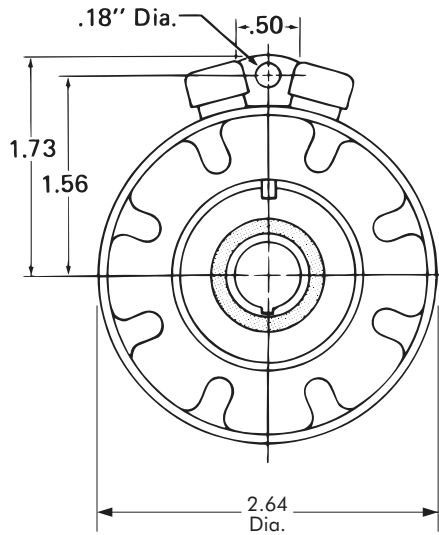
Clutch

Model

● 303



- ▶ Stationary Field
- ▶ Bearing Mounted
- ▶ Spline Drive
- ▶ Extended Hub



Collar used with 1/2" Rotor Bore only.

Customer to supply set collar/retaining device to maintain axial position of extended hub on shaft.

Bore "B"	
1/2"	
Bore "A"	Keyway
1/2"	.125 x .062

Technical Data and Torque (In. Lb.)

Model No.	Wt. Lbs.	Static Torque in. lb.	Max. Speed RPM	Coil Voltage vdc	* Rated Current amps	RPM										
						0	300	600	900	1200	1500	1800	2400	3000	3600	
303	1.2	60	3600	90	.11	60	53	48	43	42	41	38	34	32	30	

* Rated Current for 90v.

Refer to Section M for torque and heat dissipation curves.

Order Parts for Assembly No. FC303160

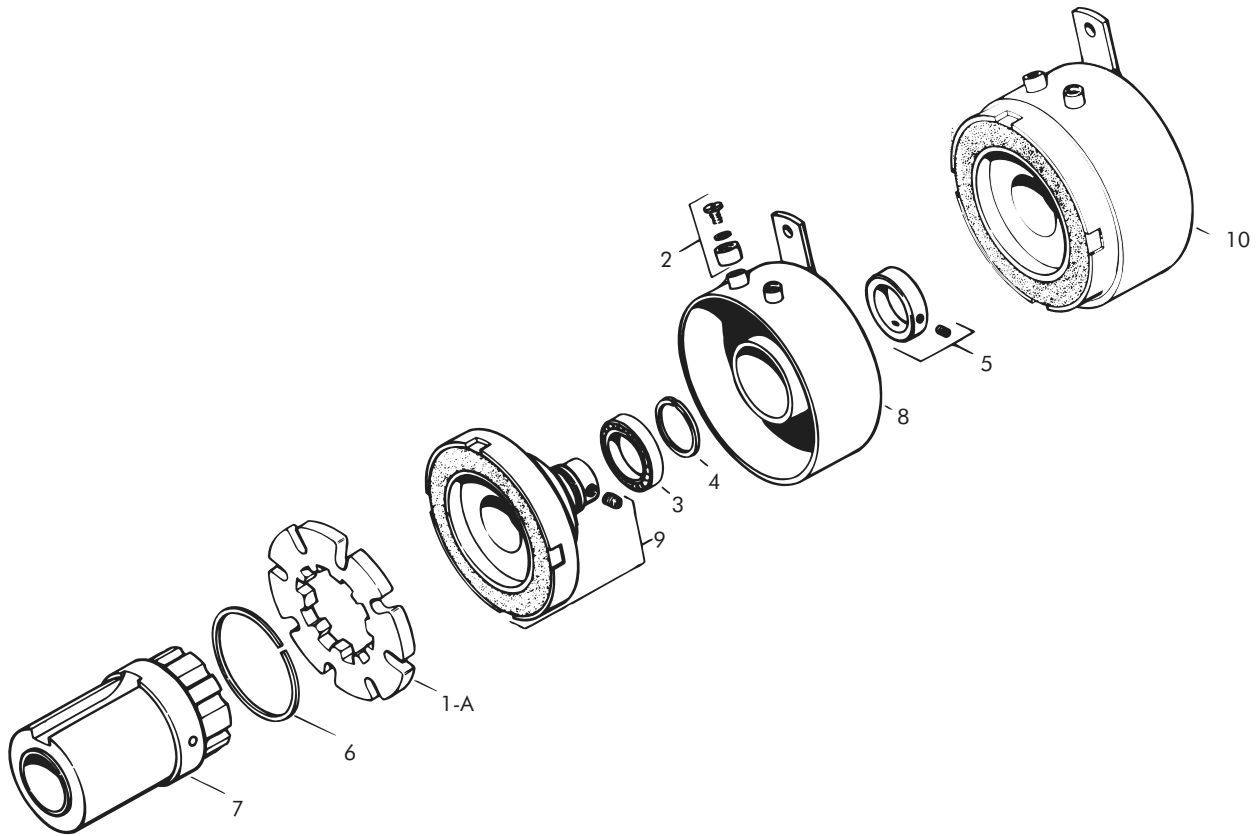
	Armature Plate Assembly	Magnet Accessory	Extended Armature Hub	Bearing Mounted Rotor & Field
			1/2" Bore	1/2" Bore
24 Volts	303390-2	326147	304459-6	303773-3
90 Volts	303390-2	326147	304459-6	303774-3

To order, specify: 1, Armature Plate Assembly
 1, Magnet Accessory
 1, Extended Armature Hub of required Bore size
 1, Bearing Mounted Rotor and Field of required Voltage and Bore size

For controls, see Section K.

Sold & Serviced By:
ELECTROMATE
 Toll Free Phone (877) SERV098
 Toll Free Fax (877) SERV099
www.electromate.com
sales@electromate.com

Clutch – Replacement Parts



Replacement Parts

Item	Qty.	Description	Part No.	Item	Qty.	Description	Part No.
1	1	Armature Plate Assy. (10 Teeth)	303390-2	9	1	Rotor Assembly	
2	1	Magnet Accessory	326147			1/2" Bore	303556-3
3	1	Bearing	DY-9436	10	1	Bearing Mounted Rotor and Field	
4	1	Retaining Ring (External)	DY-1581			24 Volts, 1/2" Bore	303773-3
5	1	Collar (furnished with .500 bore)	326304-1			90 Volts, 1/2" Bore	303774-3
6	1	Retaining Ring	DY-15393				
7	1	Extended Armature Hub Assembly 1/2" Bore	304459-6				
8	1	Field					
		24 Volts	303333				
		90 Volts	303334				

Sold & Serviced By:


Toll Free Phone (877) SERV098
 Toll Free Fax (877) SERV099
www.electromate.com
sales@electromate.com