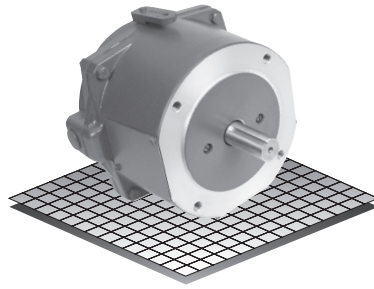


# DC Motor Coupler Brakes

# Enclosed Housing

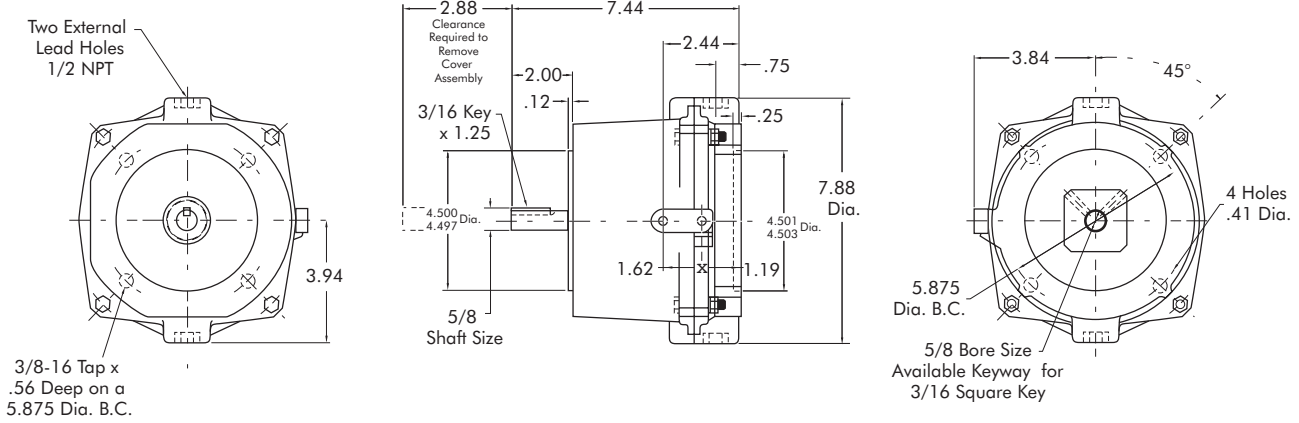
Models

- SSBP-56-6
- SSBP-56-10



- ▶ Factory Assembled and Tested
- ▶ Manual Release
- ▶ DC Power Off
- ▶ Coupler
- ▶ 56C

## DC Coupler Brake



### Technical Data and Torque (In. Lb.)

Model No.	Wt. Lbs.	Static Torque In. Lb.	DIRECT CURRENT		
			Voltage	Current Amps	Resistance Ohms
SSBP-56	13	72 or 120	24	.81	29.5
			90	.25	390

	Model No.	
	SSBP-56-6 72 In. Lb. Part No.	SSBP-56-10 120 In. Lb. Part No.
24 VDC	M52A062Y	M53A072Y
90 VDC	M52A062X	M53A072X
Friction Disc Kit	327202	327202-1
24 VDC Solenoid	327208	327208
90 VDC Solenoid	327209	327209

Must be direct-coupled; not recommended for belted or other overhung load applications

Sold & Serviced By:

Toll Free Phone (877) SERV098  
 Toll Free Fax (877) SERV099  
[www.electromate.com](http://www.electromate.com)  
[sales@electromate.com](mailto:sales@electromate.com)