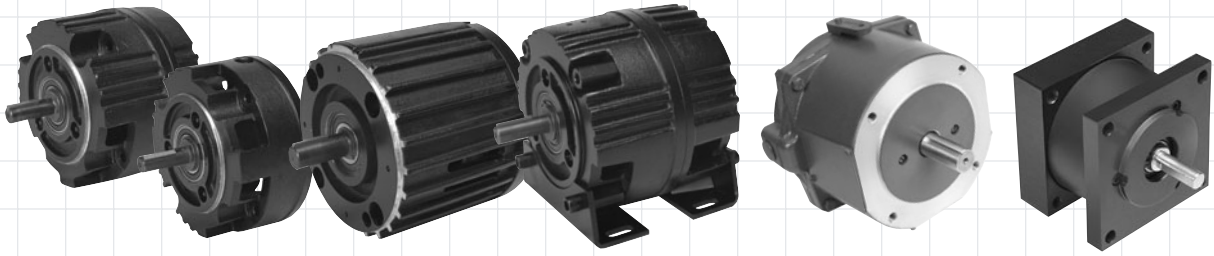


Clutch, Brake, and Clutch-Brake Modules



Description

C-face clutches, brakes and clutch-brakes are available to interface with standard 56C, 145TC, 184TC, and 215TC NEMA frame motors and gearboxes. Designed to produce greater torque for less cost, these modules feature factory assembly and testing, one-piece mounting via tie bolts and a motor mount accessory.

Shaft Input Modules are available for belt drives, in the above frame sizes.

Standard open drip proof housings - optional enclosed or washdown duty are also available.

Modules are available with 6,12, 24, or 90 VDC magnets.

Spring Set Holding brakes are also offered.

Complete information is shown for each product - including specifications, drawings, dimensions, parts list and information for ordering.

Section Index

	Page
Modules for standard C-Face motor input – Selection	B-2
Open Drip Proof Housings	
56C frame size	B-4
143TC / 145TC	B-6
182TC / 184TC	B-8
213TC / 215TC	B-10
Enclosed Housings	
56C	B-12
143TC / 145TC	B-14
182TC / 184TC	B-16
213TC / 215TC	B-18
Spring Set Holding Brake	
Enclosed housings	
56C	B-20
145TC	B-21
Shaft Input Modules - for belt drives - Selection	B-22
Open Drip Proof Housings	
56C - 5/8 inch input shaft	B-24
143TC / 145TC, 7/8 inch input shaft	B-26
182TC / 184TC, 1-1/8 inch input shaft	B-28
AC Motor Brakes / Bolt On Servo Brakes - Selection	B-31
AC Rear Mounted Brakes	B-32
AC Coupler Brakes	B-34
Bolt On Servo Brakes	B-38

Sold & Serviced By:

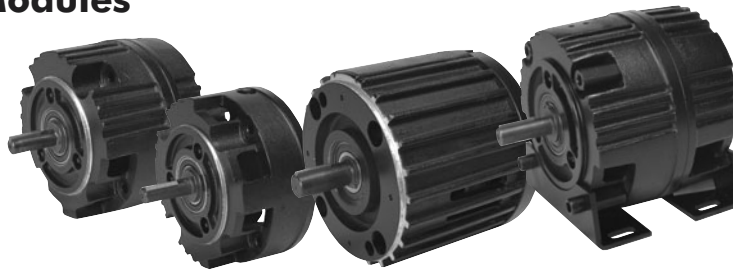


Toll Free Phone (877) SERV098

Toll Free Fax (877) SERV099

www.electromate.com

sales@electromate.com



Selection Chart – Open & Enclosed C-Face Modules

HP	RPM	NEMA Frame	Clutch-Brake	Brake	Spring-Set Holding Brake	Clutch
1/4	1800	48YC/56C	CBP-56-22 (-E)	BP-56-22	SSBP-56-6	CP-56-22
	1200	48YC/56C	CBP-56-22	BP-56-22	SSBP-56-6	CP-56-22
1/3	3600	48YC/56C	CBP-56-22	BP-56-22	SSBP-56-6	CP-56-22
	1800	48YC/56C	CBP-56-22	BP-56-22	SSBP-56-6	CP-56-22
	1200	56C	CBP-56-22	BP-56-22	SSBP-56-6	CP-56-22
1/2	3600	56C	CBP-56-22	BP-56-22	SSBP-56-6	CP-56-22
	1800	56C	CBP-56-22	BP-56-22	SSBP-56-6	CP-56-22
	1200	56C	CBP-56-22	BP-56-22	SSBP-56-6	CP-56-22
3/4	3600	56C	CBP-56-22	BP-56-22	SSBP-56-6	CP-56-22
	1800	56C	CBP-56-22	BP-56-22	SSBP-56-6	CP-56-22
	1200	56C	CBP-56-22	BP-56-22	SSBP-56-6	CP-56-22
	1200	143TC	CBP-145-22	BP-145-22	SSBP-145-10	CP-145-22
1	3600	56C	CBP-56-22	BP-56-22	SSBP-56-6	CP-56-22
	1800	56C	CBP-56-22	BP-56-22	SSBP-56-6	CP-56-22
	1800	143TC	CBP-145-22	BP-145-22	SSBP-145-10	CP-145-22
	1200	56C	CBP-56-22	BP-56-22	SSBP-56-10	CP-56-22
	1200	145TC	CBP-145-22	BP-145-22	SSBP-145-10	CP-145-22
1 – 1/2	3600	56C	CBP-56-22	BP-56-22	SSBP-56-6	CP-56-22
	3600	143TC	CBP-145-22	BP-145-22	SSBP-145-10	CP-145-22
	1800	56C	CBP-56-22	BP-56-22	SSBP-56-10	CP-56-22
	1800	145TC/184C	CBP-145-22	BP-145-22	SSBP-145-10	CP-145-22
	1200	145TC/184C	CBP-145-32	BP-145-22	SSBP-145-10	CP-145-32
2	3600	56C	CBP-56-22	BP-56-22	SSBP-56-6	CP-56-22
	3600	143TC	CBP-145-22	BP-145-22	SSBP-145-10	CP-145-22
	1800	56C	CBP-56-32	BP-56-22	SSBP-56-10	CP-56-32
	1800	145TC/184C	CBP-145-32	BP-145-22	SSBP-145-10	CP-145-32
	1800	182TC/213C	CBP-184-125	BP-184-125	–	–
	1200	145TC/184C	–	BP-145-22	–	–
	1200	182TC/184C/213C	CBP-184-125	BP-184-125	–	–
3	3600	145TC/184C	CBP-145-32	BP-145-22	SSBP-145-10	CP-145-32
	1800	145TC/184C	–	BP-145-22	–	–
	1800	182TC/184TC/213C	CBP-184-125	BP-184-125	–	–
	1200	184TC/213C/215C	CBP-184-125	BP-184-125	–	–
5	3600	145TC/184C	–	BP-145-32	–	–
	3600	184TC/213C	CBP-184-125	BP-184-125	–	–
	1800	145TC/184C	–	BP-145-32	–	–
	1800	184TC/213C	CBP-184-125	BP-184-125	–	–
	1200	215TC	CBP-215-125	BP-215-125	–	–
7 – 1/2	3600	184TC	CBP-184-125	BP-184-125	–	–
	3600	213TC	CBP-215-125	BP-215-125	–	–
	1800	213TC	CBP-215-125	BP-215-125	–	–
10	3600	215TC	–	BP-215-125	–	–
	1800	215TC	–	BP-215-125	–	–
15	3600	215TC	–	BP-215-125	–	–

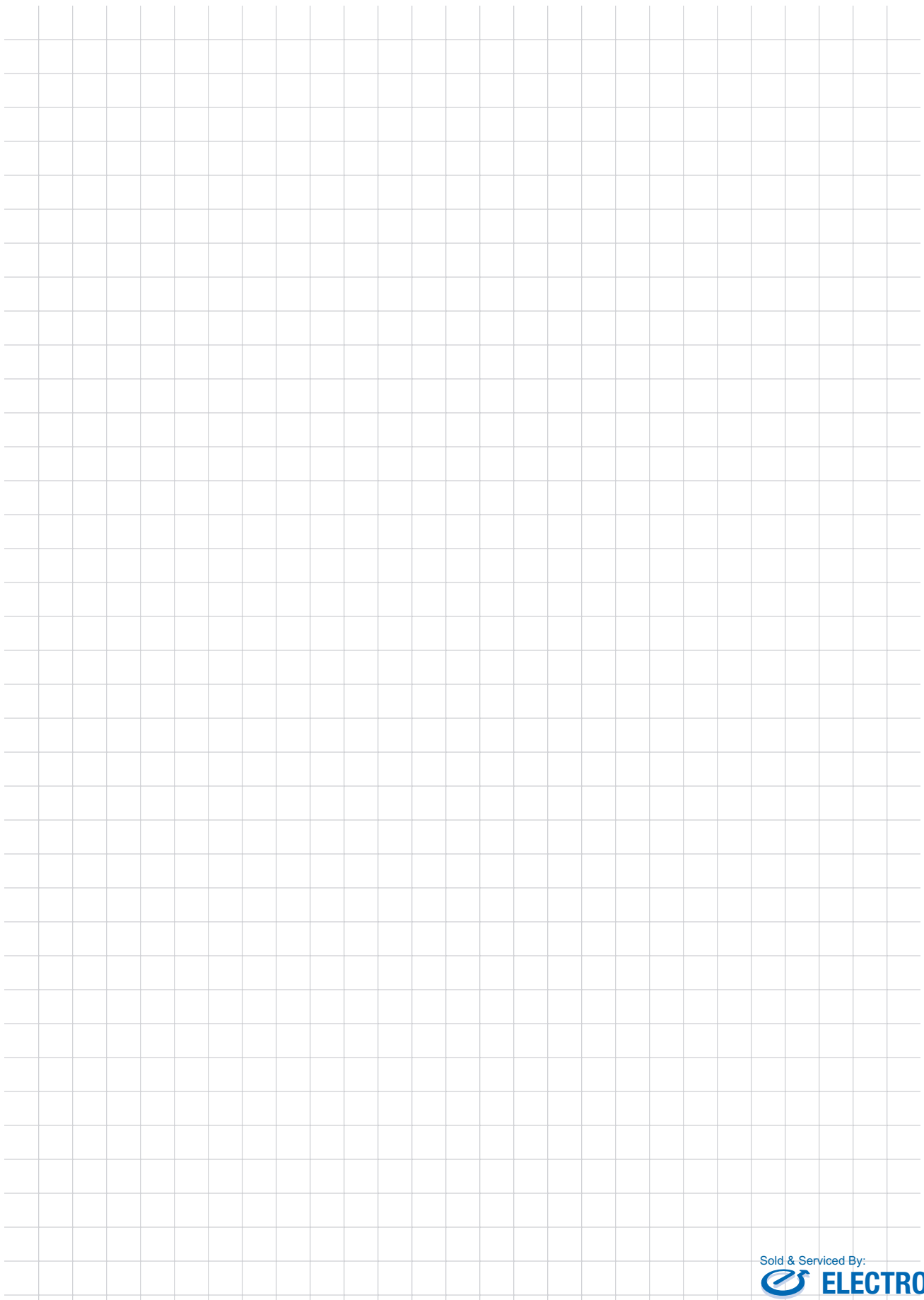
Use this chart when the cycle rate is less than 15 CPM.

For applications where the starts and/or stops exceed 15 CPM, heat dissipation capabilities should be considered in addition to torque requirements.

(Refer to Engineering Section M.)

Sold & Serviced By:

Toll Free Phone (877) SERV098
Toll Free Fax (877) SERV099
www.electromate.com
sales@electromate.com



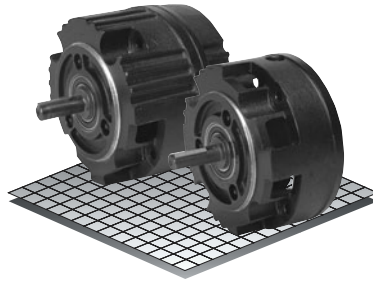
Sold & Serviced By: _____
 **ELECTROMATE**
Toll Free Phone (877) SERV098
Toll Free Fax (877) SERV099
www.electromate.com
sales@electromate.com

Clutch-Brake Modules

Open Drip Proof

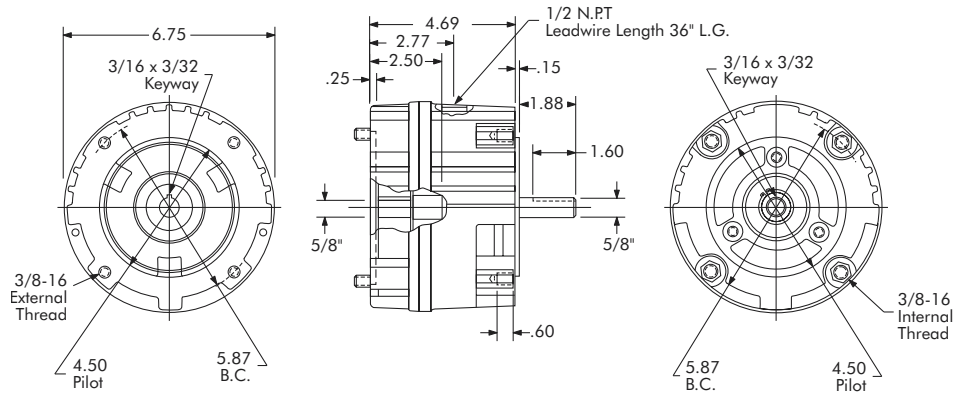
Models

- CBP-56-22
- CBP-56-32
- CP-56-22
- CP-56-32
- BP-56-22
- BP-56-32

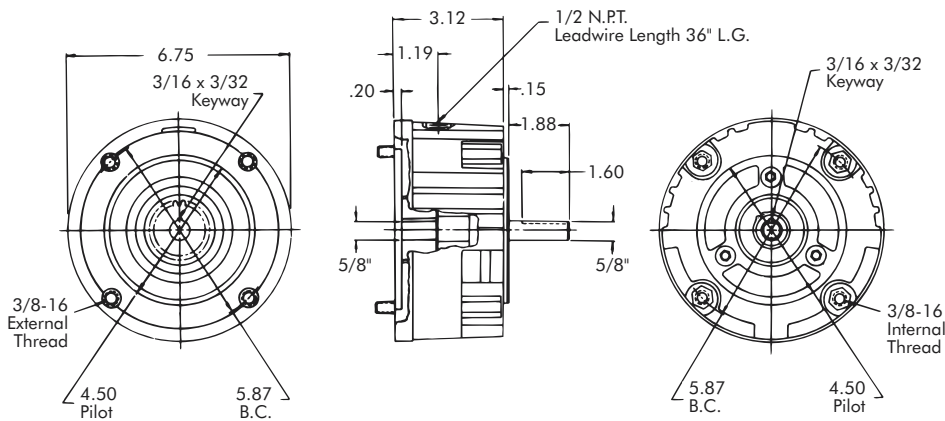


- ▶ Factory Assembled and Tested
- ▶ Spline Drive
- ▶ 56C Flange

Clutch-Brake Module or Clutch Module



Brake Module



Technical Data and Torque (In. Lb.)

Model No.	Wt. Lbs.	Static Torque in. lb.	Max. Speed RPM	Coil Voltage vdc	* Rated Current amps	RPM									
						0	300	600	900	1200	1500	1800	2400	3000	3600
CBP-56-22	16	264	3600	90	.18	264	216	192	180	168	156	156	144	132	120
CP-56-22	12														
BP-56-22	8														
CBP-56-32	16	384	3600	90	.18	384	312	276	264	240	228	228	216	192	168
CP-56-32	12														
BP-56-32	8														

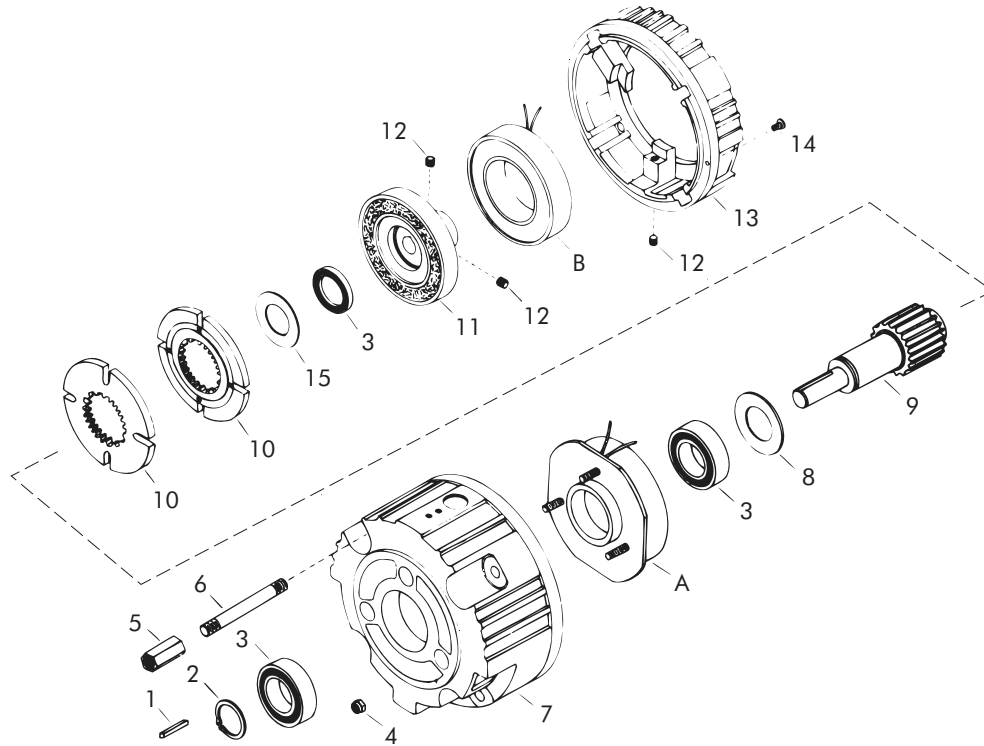
* Rated Current for 90v

Refer to Section M for torque and heat dissipation curves.

	Model No.					
	CBP-56-22	CBP-56-32	CP-56-22	CP-56-32	BP-56-22	BP-56-32
12 Volts	304194-26	-	-	-	-	-
24 Volts	304194-27	304294-27	304196-27	304296-27	304195-27	304295-27
90 Volts	304194-28	304294-28	304196-28	304296-28	304195-28	304295-28

To order use number shown in table above: example – for 90 volt CBP-56-22, order 304194-28. For controls, see Section K.

Sold & Serviced By:
ELECTROMATE
 Toll Free Phone (877) SERV098
 Toll Free Fax (877) SERV099
www.electromate.com
sales@electromate.com



Replacement Parts

Item	Qty.	Description	Model No.					
			Clutch-Brake Module		Clutch Module		Brake Module	
			CBP-56-22	CBP-56-32	CP-56-22	CP-56-32	BP-56-22	BP-56-32
1	1	Output Key	DY-11212	DY-11212	DY-11212	DY-11212	DY-11212	DY-11212
2	1	Retaining Ring	DY-1102	DY-1102	DY-1102	DY-1102	DY-1102	DY-1102
3	3 ●	Bearing	DY-11500	DY-11500	DY-11500	DY-11500	DY-11500	DY-11500
4	3	Nut	RY-20113	RY-20113	RY-20113	RY-20113	RY-20113	RY-20113
5	4	Hex Nut	326850	326850	326850	326850	326850	326850
6	4	Stud	326851-4	326851-4	326851-4	326851-4	326851-3	326851-3
7	1	Brake End Bell	650337-3	650337-3	650337-3	650337-3	650337-4	650337-4
8	1	Washer	326960	326960	326960	326960	-	-
9	1	Brake Shaft	650340-7	650340-7	650340-7	650340-7	650376-1	650376-1
10	2 ▲	Armature	304396-8	304396-8	304396-8	304396-8	304396-8	304396-8
11	1	Rotor	304527-7	304527-12	304527-7	304527-12	-	-
12	2	Setscrew	RY-20020	RY-20020	RY-20020	RY-20020	RY-20020	RY-20020
13	1	Clutch End Bell	650356-4	650356-4	650356-4	650356-4	-	-
14	2	Screw	DY-1120	DY-1120	DY-1120	DY-1120	-	-
15	1	Washer	326961	326961	326961	326961	-	-
17	3	Screw (not shown)	-	-	RY-20316	RY-20316	-	-
18	1	Bearing Support (not shown)	-	-	304440-7	304440-7	-	-
19	3	Screw (not shown)	DY-9980	DY-9980	DY-9980	DY-9980	-	-
20	2	Washer (not shown)	DY-10393	DY-10393	DY-10393	DY-10393	-	-
21	2 ▲	Retaining Ring (not shown)	RY-20310	RY-20310	RY-20310	RY-20310	RY-20310	RY-20310
A	1	Brake Field						
		12 Volts	304352-6	304352-11	-	-	304352-6	304352-11
		24 Volts	304353-6	304353-11	-	-	304353-6	304353-11
		90 Volts	304354-6	304354-11	-	-	304354-6	304354-11
B	1	Clutch Field						
		12 Volts	304332-11	304332-12	304332-11	304332-12	-	-
		24 Volts	304333-11	304333-12	304333-11	304333-12	-	-
		90 Volts	304334-11	304334-12	304334-11	304334-12	-	-

● Qty. 1 on Brake Module
▲ Qty. 1 on Clutch Module and Brake Module

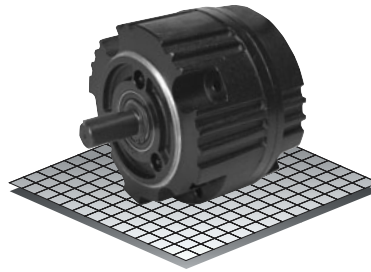


Clutch-Brake Modules

Open Drip Proof

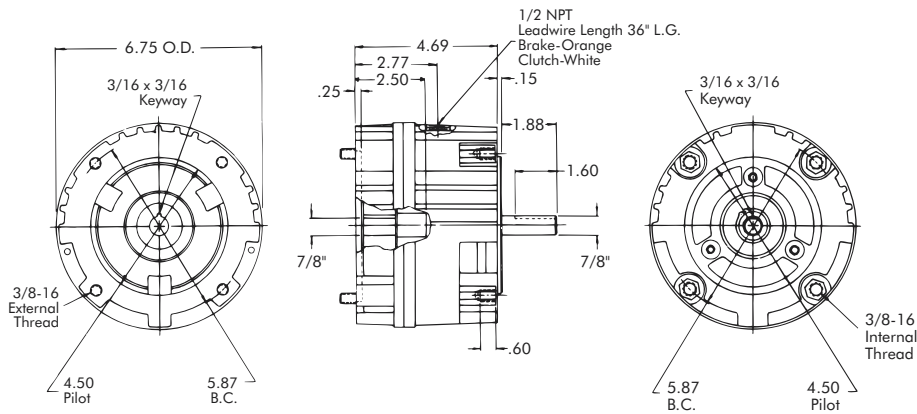
Models

- CBP-145-22
- CBP-145-32
- CP-145-22
- CP-145-32
- BP-145-22
- BP-145-32

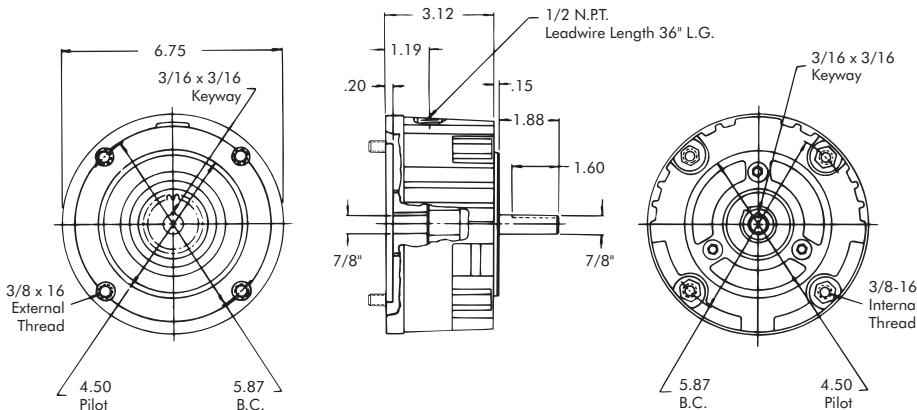


- ▶ Factory Assembled and Tested
- ▶ Spline Drive
- ▶ 143TC/143TC Flange

Clutch-Brake Module or Clutch Module



Brake Module



Technical Data and Torque (In. Lb.)

Model No.	Wt. Lbs.	Static Torque in. lb.	Max. Speed RPM	Coil Voltage vdc	* Rated Current amps	RPM									
						0	300	600	900	1200	1500	1800	2400	3000	3600
CBP-145-22	16	264	3600	90	.18	264	216	192	180	168	156	156	144	132	120
CP-145-22	12														
BP-145-22	8														
CBP-145-32	16	384	3600	90	.18	384	312	276	264	240	228	228	216	192	168
CP-145-32	12														
BP-145-32	8														

* Rated Current for 90v

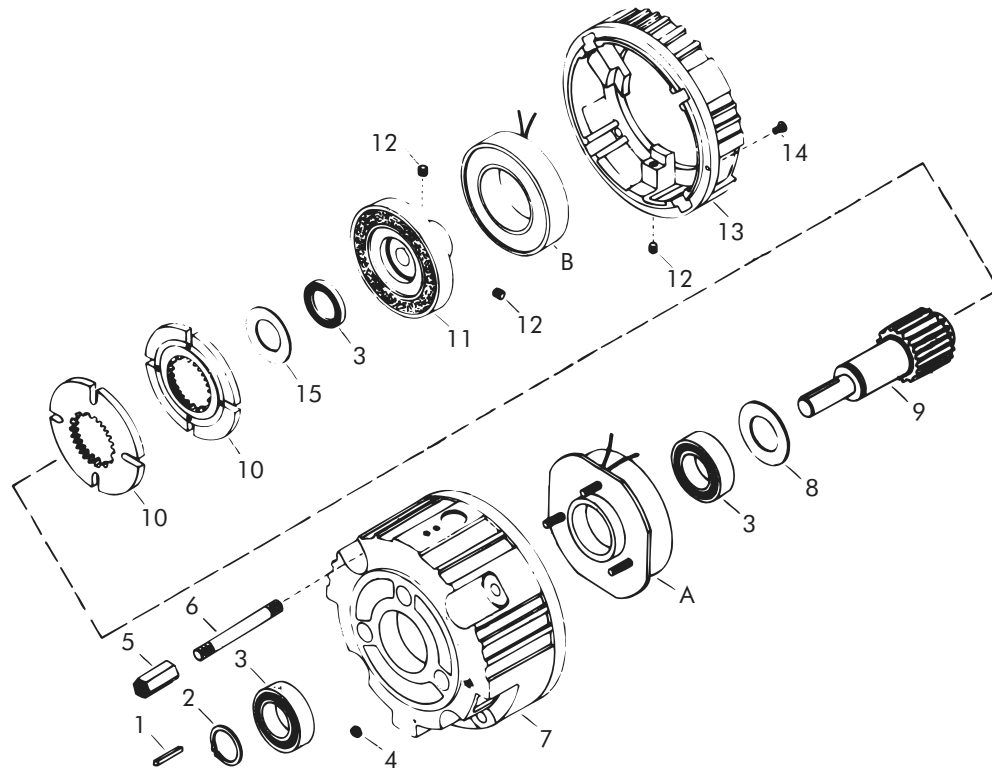
Refer to Section M for torque and heat dissipation curves.

	Model No.					
	CBP-145-22	CBP-145-32	CP-145-22	CP-145-32	BP-145-22	BP-145-32
24 Volts	304194-31	304294-31	304196-31	304296-31	304195-31	304295-31
90 Volts	304194-32	304294-32	304196-32	304296-32	304195-32	304295-32

To order use number shown in table above: example – for 90 volt CBP-145-22, order 304194-32.
For controls, see Section K.

Sold & Serviced By:

 Toll Free Phone (877) SERV098
 Toll Free Fax (877) SERV099
www.electromate.com
sales@electromate.com



Replacement Parts

Item	Qty.	Description	Model No.					
			Clutch-Brake Module		Clutch Module		Brake Module	
			CBP-145-22	CBP-145-32	CP-145-22	CP-145-32	BP-145-22	BP-145-32
1	1	Output Key	DY-11212	DY-11212	DY-11212	DY-11212	DY-6529	DY6529
2	1	Retaining Ring	DY-1102	DY-1102	DY-1102	DY-1102	DY-1102	DY1102
3	3 ●	Bearing	DY-11500	DY-11500	DY-11500	DY-11500	DY-11500	DY11500
4	3	Nut	RY-20113	RY-20113	RY-20113	RY-20113	RY-20113	RY20113
5	4	Hex Nut	326850	326850	326850	326850	326850	326850
6	4	Stud	326851-4	326851-4	326851-4	326851-4	326851-3	326851-3
7	1	Brake End Bell	650337-3	650337-3	650337-3	650337-3	650337-4	650337-4
8	1	Washer	326960	326960	326960	326960	-	-
9	1	Brake Shaft	650340-8	650340-8	650340-8	650340-8	650376-2	650376-2
10	2 ▼	Armature	304396-8	304396-8	304396-8	304396-8	304396-8	304396-8
11	1	Rotor	304527-8	304527-13	304527-8	304527-13	-	-
12	2	Setscrew	RY20020	RY-20020	RY-20020	RY-20020	RY-20020	RY20020
13	1	Clutch End Bell	650356-4	650356-4	650356-4	650356-4	-	-
14	2	Screw	DY-1120	DY-1120	DY-1120	DY-1120	-	-
15	1	Washer (not shown)	326961	326961	326960	326961	-	-
17	3	Screw	-	-	RY20316	RY-20316	-	-
18	1	Bearing Support (not shown)	-	-	304440-7	304440-7	-	-
19	3	Screw (not shown)	DY-9980	DY-9980	DY-9980	DY-9980	-	-
20	2	Washer (not shown)	DY-10393	DY-10393	DY-10393	DY-10393	-	-
21	2 ▼	Retaining Ring (not shown)	RY-20310	RY-20310	RY-20310	RY-20310	RY-20310	RY20310
A	1	Brake Field						
		24 Volts	304353-6	304353-11	-	-	304353-6	304353-11
		90 Volts	304354-6	304354-11	-	-	304354-6	304354-11
B	1	Clutch Field						
		24 Volts	304333-11	304333-12	304333-11	304333-12	-	-
		90 Volts	304334-11	304334-12	304334-11	304334-12	-	-

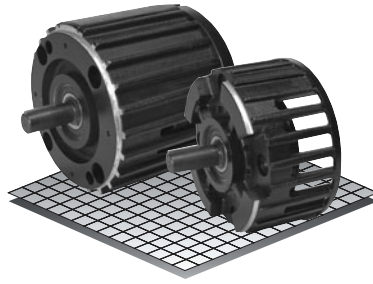
● Qty. 1 on Brake Module
 ▼ Qty. 1 on Brake Module or Clutch Module

Clutch-Brake Modules

Open Drip Proof

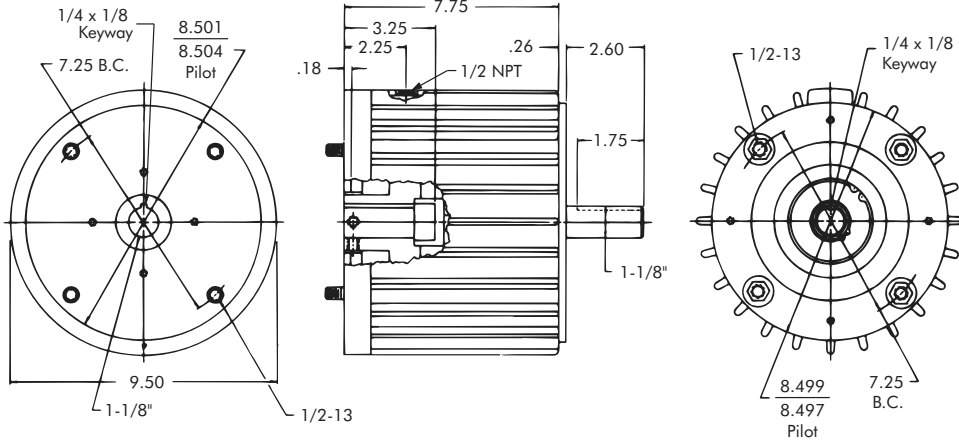
Models

- CBP-184-125
- BP-184-125

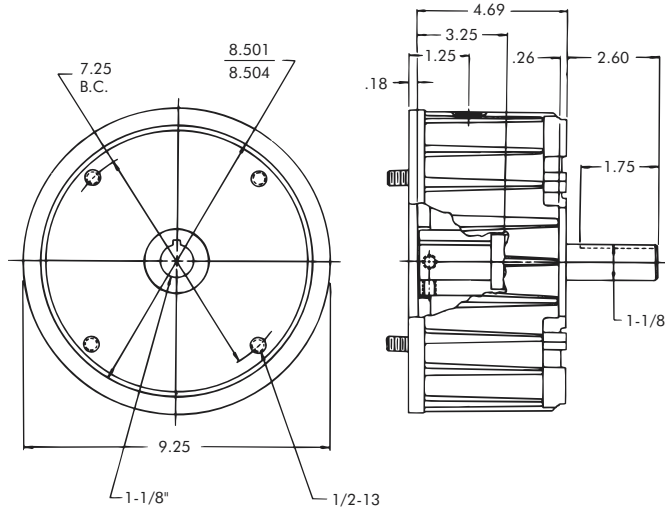


- ▶ Factory Assembled and Tested
- ▶ Spline Drive
- ▶ 182TC/184TC Flange

Clutch-Brake Module



Brake Module



Technical Data and Torque (In. Lb.)

Model No.	Wt. Lbs.	Static Torque in. lb.	Max. Speed RPM	Coil Voltage vdc	* Rated Current amps	RPM									
						0	300	600	900	1200	1500	1800	2400	3000	3600
CBP-184-125	49	1500	3600	90	.46	1500	1320	1140	1020	960	900	804	636	516	420
BP-184-125	31														

* Rated Current for 90v

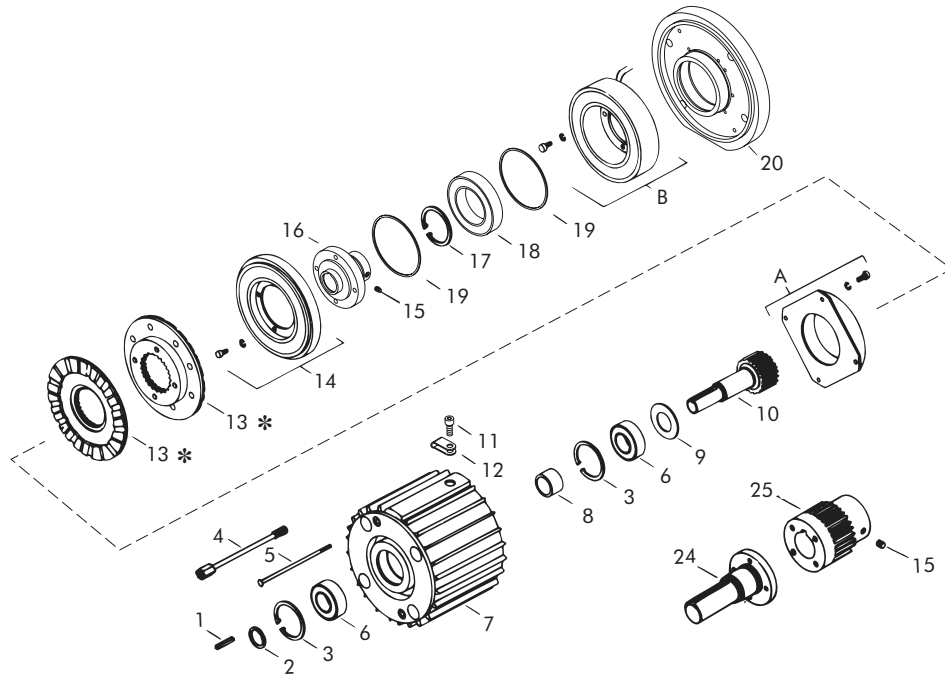
Refer to Section M for torque and heat dissipation curves.

	Model No.	
	CBP-184-125	BP-184-125
24 Volts	307194-151	307195-27
90 Volts	307194-152	307195-28

To order use number shown in Table above: example – for 90 volt CBP-184-125, order 307194-152. For controls, see Section K.

Sold & Serviced By:

 Toll Free Phone (877) SERV098
 Toll Free Fax (877) SERV099
www.electromate.com
sales@electromate.com



Replacement Parts

Item	Qty.	Description	Model No.	
			Clutch-Brake Module	Brake Module
			CBP-184-125	BP-184-125
1	2	Key	326770	326770
2	1	Retaining Ring	RY-20191	RY-20191
3	1	Retaining Ring	RY-20114	DY-11268
4	4	Tie Bolt	650378	650378-1
5	2	Assembly Screw	RY-20193	–
6	2	Bearing	RY-20115	RY-20115
7	1	Housing	650377	650388
8	1	Bearing Spacers	326699	–
9	1	Washer	326769-2	–
10	1	Splined Shaft	650340-20	–
11	1	Cap Screw	DY-10278	–
12	1	Wire Clip	36-42-3	–
13	2	Armature	307382-1	307382-2
14	1	Rotor	307820-11	–
15	2	Setscrew	–	100804
16	1	Rotor Hub	307751-8	–
17	1	Retaining Ring	327064	–
18	1	Bearing	RY-20210	–
19	2	Retaining Ring	DY-15117	–
20	1	End Cap	650380-3	–
21	8	Screw (not shown)	DY-644	RY-20276
22	12	Washer (not shown)	DY-4498	101263
23	6	Screw (not shown)	–	101281
24	1	Brake Shaft	–	650341-7
25	1	Brake Hub	–	307454-1
26	1	Retaining Ring (not shown)	–	RY-20336
A	1	Brake Field		
		24 Volts	307353-4	307353-1
		90 Volts	307354-4	307354-1
B	1	Clutch Field		
		24 Volts	307713-5	–
		90 Volts	307714-5	–

+ Qty. 1 on Brake or Clutch Module
 ■ Qty. 8 on Brake Module

● Qty. 2 on Brake Module
 * Current design armatures are solid.

Sold & Serviced By:



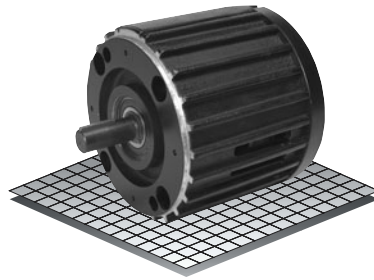
Toll Free Phone (877) SERV098
 Toll Free Fax (877) SERV099
www.electromate.com
sales@electromate.com

Clutch-Brake Modules

Open Drip Proof

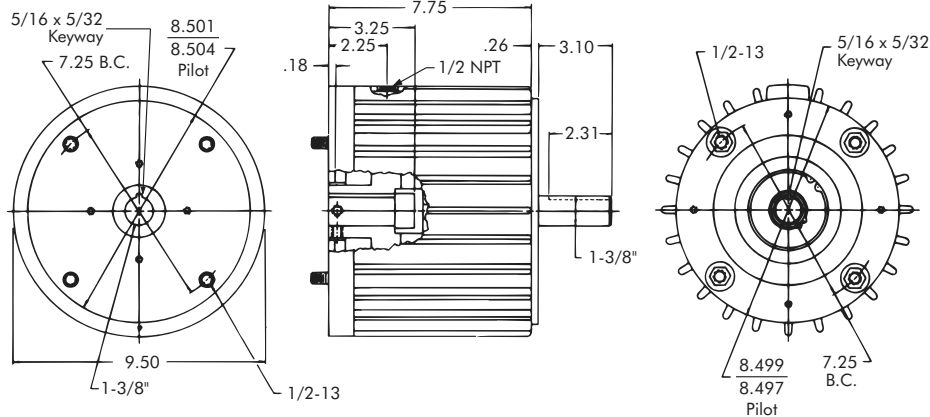
Models

- CBP-215-125
- BP-215-125

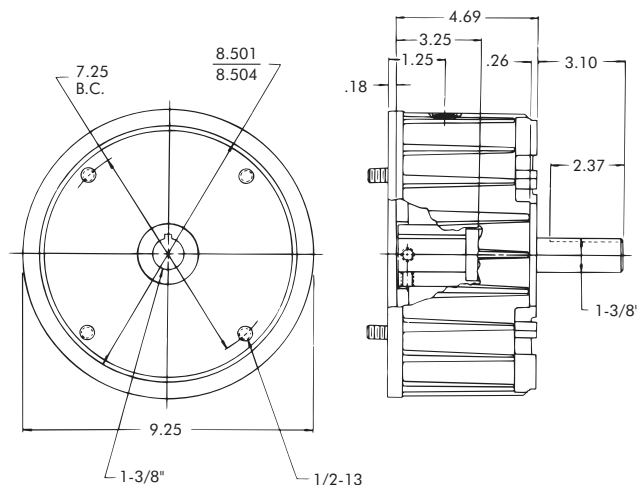


- ▶ Factory Assembled and Tested
- ▶ Spline Drive
- ▶ 213TC/215TC Flange

Clutch-Brake Module



Brake Module



Technical Data and Torque (In. Lb.)

Model No.	Wt. Lbs.	Static Torque in. lb.	Max. Speed RPM	Coil Voltage vdc	* Rated Current amps	RPM									
						0	300	600	900	1200	1500	1800	2400	3000	3600
CBP-215-125	49	1500	3600	90	.46	1500	1320	1140	1020	960	900	804	636	516	420
BP-215-125	31														

* Rated Current for 90v

Refer to Section M for torque and heat dissipation curves.

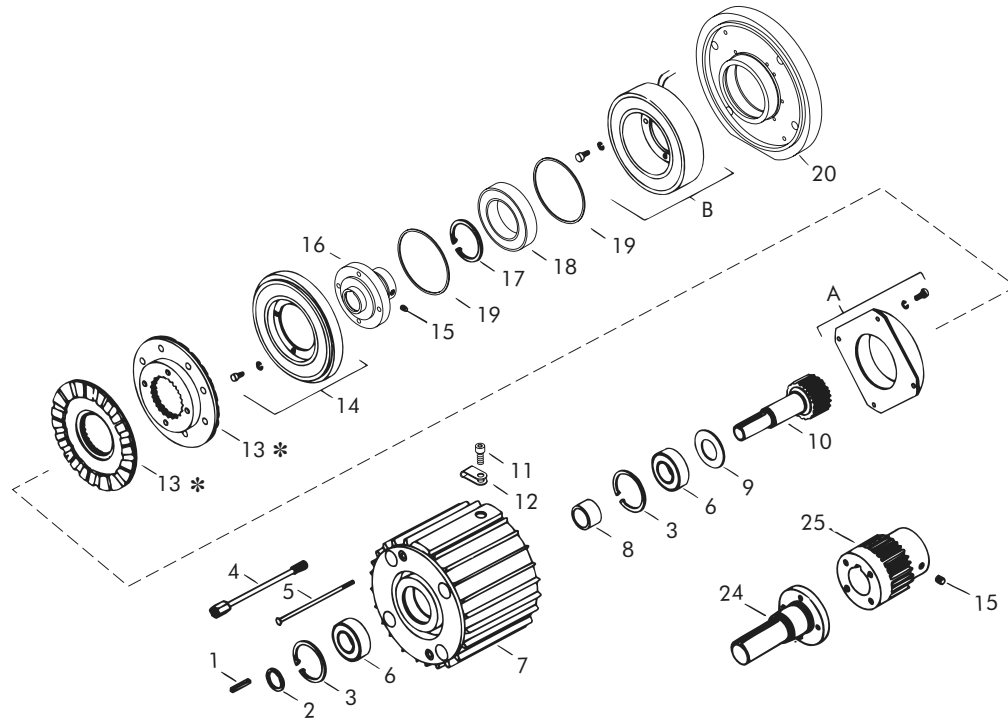
	Model No.	
	CBP-215-125	BP-215-125
24 Volts	307194-155	307195-31
90 Volts	307194-156	307195-32

To order use number shown in table above: example – for 90 volt CBP-215-125, order 307194-156.

For controls, see Section K.

Sold & Serviced By:

Toll Free Phone (877) SERV098
 Toll Free Fax (877) SERV099
www.electromate.com
sales@electromate.com



Replacement Parts

Item	Qty.	Description	Model No.	
			Clutch-Brake Module	Brake Module
			CBP-215-125	BP-215-125
1	2	Key	326771	326771
2	1	Retaining Ring	RY-20191	RY-20191
3	1	Retaining Ring	RY-20114	DY-11268
4	4	Tie Bolt	650378	650378-1
5	2	Assembly Screw	RY-20193	—
6	2	Bearing	RY-20115	RY-20115
7	1	Housing	650377	650388
8	1	Bearing Spacer	326699	—
9	1	Washer	326769-2	—
10	1	Splined Shaft	650340-21	—
11	1	Cap Screw	DY-10278	—
12	1	Wire Clip	36-42-3	—
13	2	Armature	307382-1	307382-2
14	1	Rotor	307820-11	—
15	2	Setscrew	—	100804
16	1	Rotor Hub	307751-9	—
17	1	Retaining Ring	327064	—
18	1	Bearing	RY-20210	—
19	2	Retaining Ring	DY-15117	—
20	1	End Cap	650380-3	—
21	8	Screw	DY-644	RY-20276
22	12	Washer	DY-4498	101263
23	6	Screw (not shown)	—	101281
24	1	Brake Shaft	—	650341-8
25	1	Brake Hub	—	307454-2
26	1	Retaining Ring (not shown)	—	RY-20336
A	1	Brake Field		
		24 Volts	307353-4	307353-1
		90 Volts	307354-4	307354-1
B	1	Clutch Field		
		24 Volts	307713-5	—
		90 Volts	307714-5	—

+ Qty. 1 on Brake or Clutch Module
 ■ Qty. 8 on Brake Module

● Qty. 2 on Brake Module
 * Current design armatures are solid.

Sold & Serviced By: **ELECTROMATE**

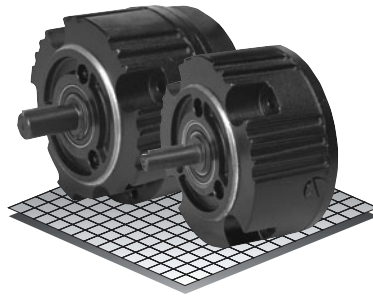
Toll Free Phone (877) SERV098
 Toll Free Fax (877) SERV099
 www.electromate.com
 sales@electromate.com

Clutch-Brake Modules

Enclosed Housing

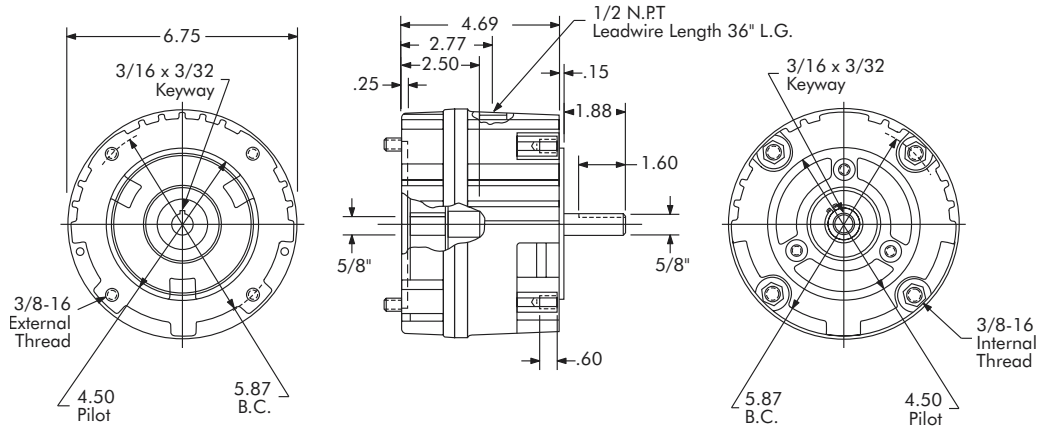
Models

- CBP-56-22-E
- CBP-56-32-E
- BP-56-22-E
- BP-56-32-E

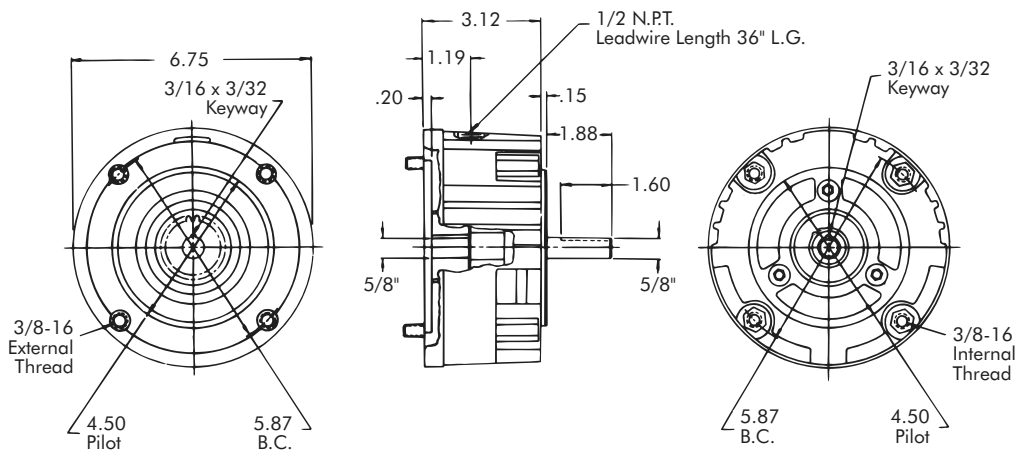


- ▶ Factory Assembled and Tested
- ▶ Spline Drive
- ▶ 56C Flange

Clutch-Brake Module



Brake Module



Technical Data and Torque (In. Lb.)

Model No.	Wt. Lbs.	Static Torque in. lb.	Max. Speed RPM	Coil Voltage vdc	* Rated Current amps	RPM									
						0	300	600	900	1200	1500	1800	2400	3000	3600
CBP-56-22-E	16	264	3600	90	.18	264	216	192	180	168	156	156	144	132	120
BP-56-22-E	8														
CBP-56-32-E	16	384	3600	90	.18	384	312	276	264	240	228	228	216	192	168
BP-56-32-E	8														

* Rated Current for 90v

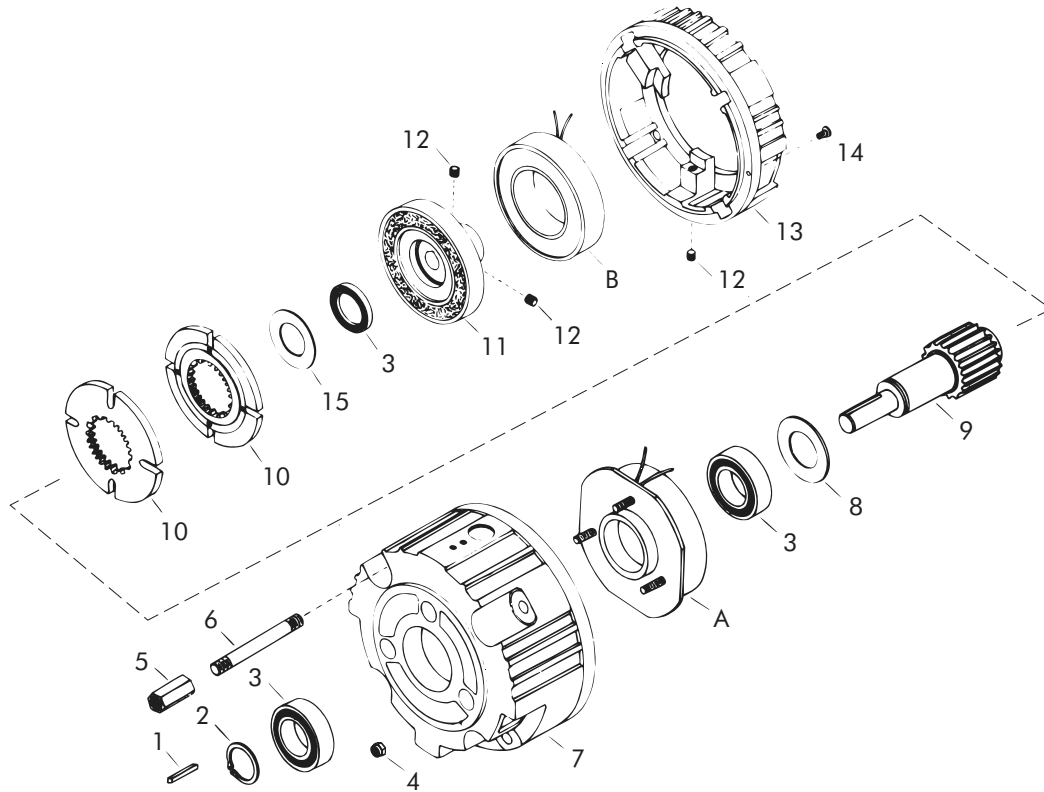
Refer to Section M for torque and heat dissipation curves.

	Model No.			
	CBP-56-22-E	CBP-56-32-E	BP-56-22-E	BP-56-32-E
24 Volts	304194-89	304294-89	304195-89	304295-89
90 Volts	304194-90	304294-90	304195-90	304295-90

To order use number shown in table above: example – for 90 volt CBP-56-22-E, order 304194-90. For controls, see Section K.

Sold & Serviced By:

Toll Free Phone (877) SERV098
 Toll Free Fax (877) SERV099
www.electromate.com
sales@electromate.com



Replacement Parts

Item	Qty.	Description	Model No.			
			Clutch-Brake Module		Brake Module	
			CBP-56-22-E	CBP-56-32-E	BP-56-22-E	BP-56-32-E
1	1	Output Key	DY-11212	DY-11212	DY-11212	DY-11212
2	1	Retaining Ring	DY-1102	DY-1102	DY-1102	DY-1102
3	3 ●	Bearing	DY-11500	DY-11500	DY-11500	DY-11500
4	3	Nut	RY-20113	RY-20113	RY-20113	RY-20113
5	4	Hex Nut	326850	326850	326850	326850
6	4	Stud	326851-4	326851-4	326851-3	326851-3
7	1	Brake End Bell	650337-7	650337-7	650337-8	650337-8
8	1	Washer	326960	326960	-	-
9	1	Brake Shaft	650340-7	650340-7	650376-1	650376-1
10	2 ▲	Armature	304396-8	304396-8	304396-8	304396-8
11	1	Rotor	304527-7	304527-12	-	-
12	2	Setscrew	RY-20020	RY-20020	RY-20020	RY-20020
13	1	Clutch End Bell	650356-6	650356-6	-	-
14	2	Screw	DY-1120	DY-1120	-	-
15	1	Washer	326961	326961	-	-
17	3	Screw (not shown)	-	-	-	-
18	1	Bearing Support (not shown)	-	-	-	-
19	3	Screw (not shown)	DY-9980	DY-9980	-	-
20	2	Washer (not shown)	DY-1548	DY-1548	-	-
21	2 ▲	Retaining Ring (not shown)	RY-20310	RY-20310	RY-20310	RY-20310
A	1	Brake Field				
		24 Volts	304353-6	304353-11	304353-6	304353-11
		90 Volts	304354-6	304354-11	304354-6	304354-11
B	1	Clutch Field				
		24 Volts	304333-11	304333-12	-	-
		90 Volts	304334-11	304334-12	-	-

● Qty. 1 on Brake Module
 ▲ Qty. 1 on Clutch Module and Brake Module

Sold & Serviced By:
ELECTROMATE

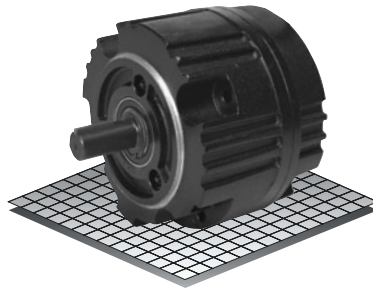
Toll Free Phone (877) SERV098
 Toll Free Fax (877) SERV099
www.electromate.com
 sales@electromate.com

Clutch-Brake Modules

Enclosed Housing

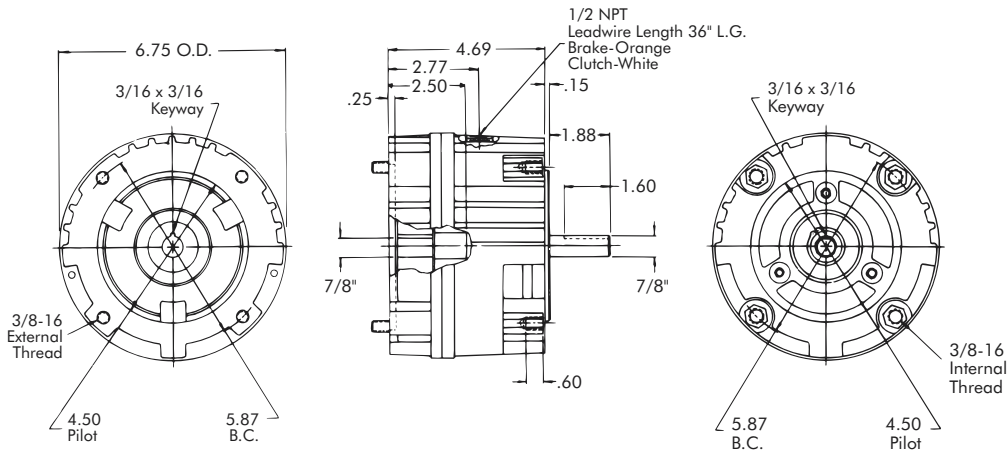
Models

- CBP-145-22-E
- CBP-145-32-E
- BP-145-22-E
- BP-145-32-E

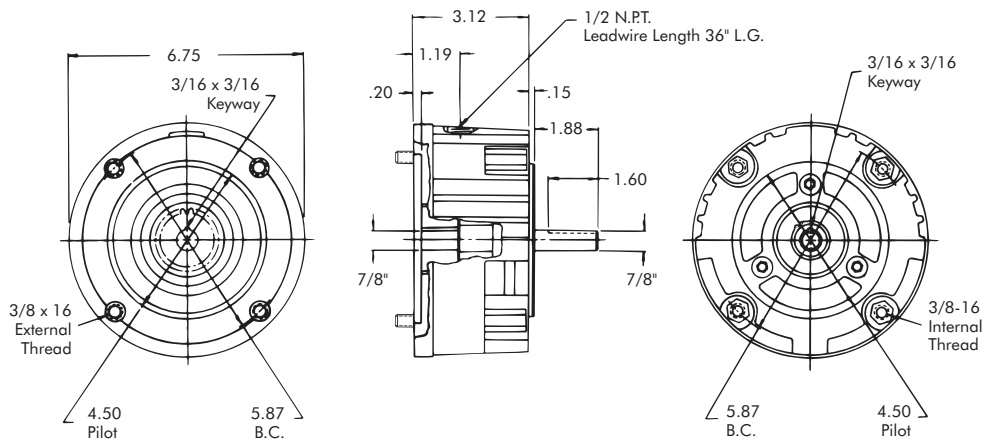


- ▶ Factory Assembled and Tested
- ▶ Spline Drive
- ▶ 143TC/143TC Flange

Clutch-Brake Module



Brake Module



Technical Data and Torque (In. Lb.)

Model No.	Wt. Lbs.	Static Torque in. lb.	Max. Speed RPM	Coil Voltage vdc	* Rated Current amps	RPM									
						0	300	600	900	1200	1500	1800	2400	3000	3600
CBP-145-22-E	16	264	3600	90	.18	264	216	192	180	168	156	156	144	132	120
BP-145-22-E	8														
CBP-145-32-E	16	384	3600	90	.18	384	312	276	264	240	228	228	216	192	168
BP-145-32-E	8														

* Rated Current for 90v

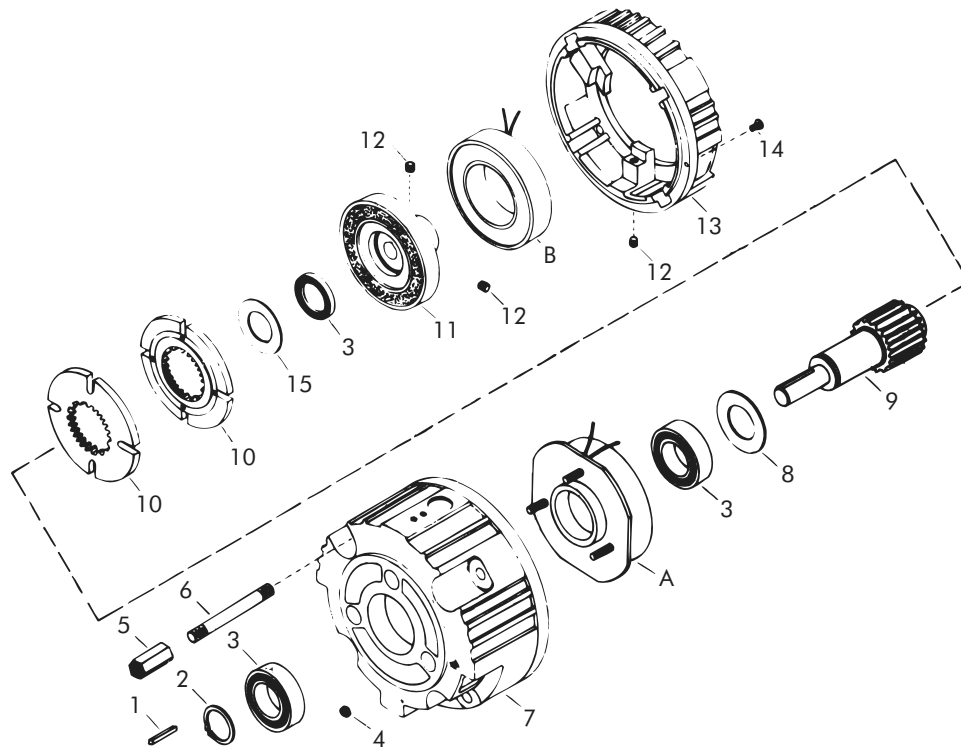
Refer to Section M for torque and heat dissipation curves.

	Model No.			
	CBP-145-22-E	CBP-145-32-E	BP-145-22-E	BP-145-32-E
24 Volts	304194-93	304294-93	304195-93	304295-93
90 Volts	304194-94	304294-94	304195-94	304295-94

To order use number shown in table above: example – for 90 volt CBP-145-22-E, order 304194-94.
For controls, see Section K.

Sold & Serviced By:

 Toll Free Phone (877) SERV098
 Toll Free Fax (877) SERV099
www.electromate.com
sales@electromate.com



Replacement Parts

Item	Qty.	Description	Model No.			
			Clutch-Brake Module		Brake Module	
			CBP-145-22-E	CBP-145-32-E	BP-145-22-E	BP-145-32-E
1	1	Output Key	DY-11212	DY-11212	DY-6529	DY-6529
2	1	Retaining Ring	DY-1102	DY-1102	DY-1102	DY-1102
3	3 ●	Bearing	DY-11500	DY-11500	DY-11500	DY-11500
4	3	Nut	RY-20113	RY-20113	RY-20113	RY-20113
5	4	Hex Nut	326850	326850	326850	326850
6	4	Stud	326851-4	326851-4	326851-3	326851-3
7	1	Brake End Bell	650337-7	650337-7	650337-4	650337-4
8	1	Washer	326960	326960	-	-
9	1	Brake Shaft	650340-8	650340-8	650376-2	650376-2
10	2 ▼	Armature	304396-8	304396-8	304396-8	304396-8
11	1	Rotor	304527-8	304527-13	-	-
12	2	Setscrew	RY-20020	RY-20020	RY-20020	RY-20020
13	1	Clutch End Bell	650356-6	650356-6	-	-
14	2	Screw	RY-20374	RY-20374	-	-
15	1	Washer (not shown)	326961	326961	-	-
17	3	Screw	-	-	-	-
18	1	Bearing Support (not shown)	-	-	-	-
19	3	Screw (not shown)	DY-9980	DY-9980	-	-
20	2	Washer (not shown)	DY-1548	DY-1548	-	-
21	2 ▼	Retaining Ring (not shown)	RY-20310	RY-20310	RY-20310	RY-20310
A	1	Brake Field				
		24 Volts	304353-6	304353-11	304353-6	304353-11
		90 Volts	304354-6	304354-11	304354-6	304354-11
B	1	Clutch Field				
		24 Volts	304333-11	304333-12	-	-
		90 Volts	304334-11	304334-12	-	-

● Qty. 1 on Brake Module
 ▼ Qty. 1 on Brake Module or Clutch Module



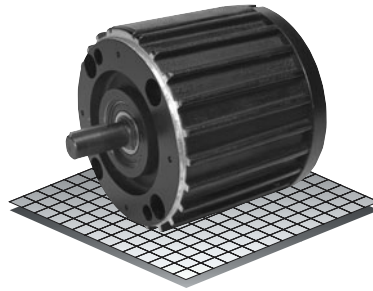
Toll Free Phone (877) SERV098
 Toll Free Fax (877) SERV099
 www.electromate.com
 sales@electromate.com

Clutch-Brake Modules

Enclosed Housing

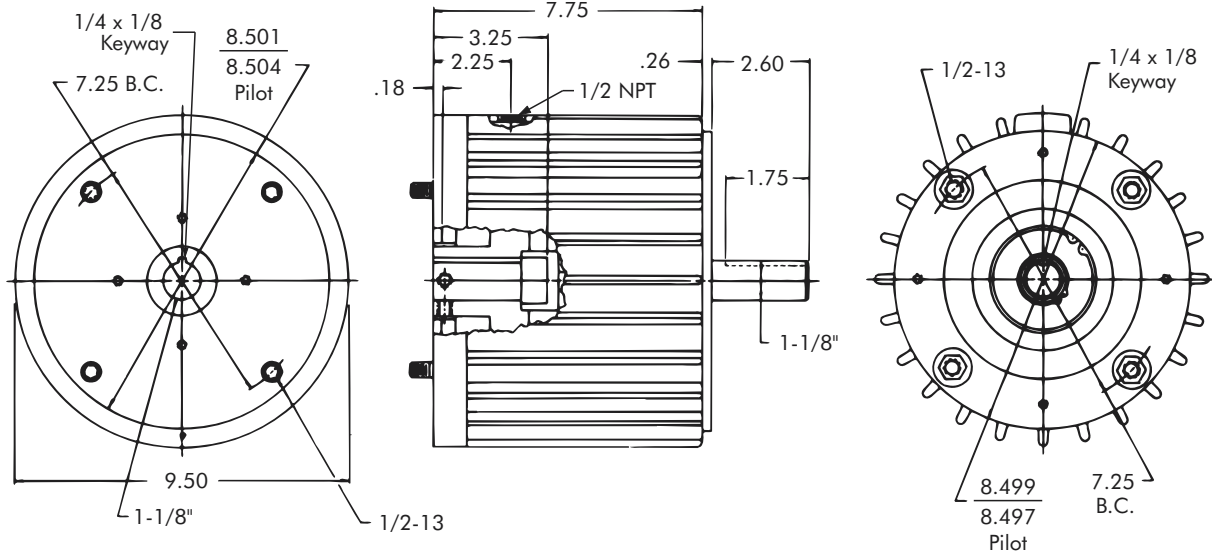
Models

- CBP-184-125-E



- ▶ Factory Assembled and Tested
- ▶ Spline Drive
- ▶ 182TC/184TC Flange

Clutch-Brake Module



Technical Data and Torque (In. Lb.)

Model No.	Wt. Lbs.	Static Torque in. lb.	Max. Speed RPM	Coil Voltage vdc	* Rated Current amps	RPM									
						0	300	600	900	1200	1500	1800	2400	3000	3600
CBP-184-125-E	49	1500	3600	90	.46	1500	1320	1140	1020	960	900	804	636	516	420

Refer to Section M for torque and heat dissipation curves.

* Rated Current for 90v

Model No.	
CBP-184-125-E	
24 Volts	307194-159
90 Volts	307194-160

To order use number shown in Table above:
example – for 90 volt CBP-184-125-E, order 307194-160.

For controls, see Section K.

Sold & Serviced By:

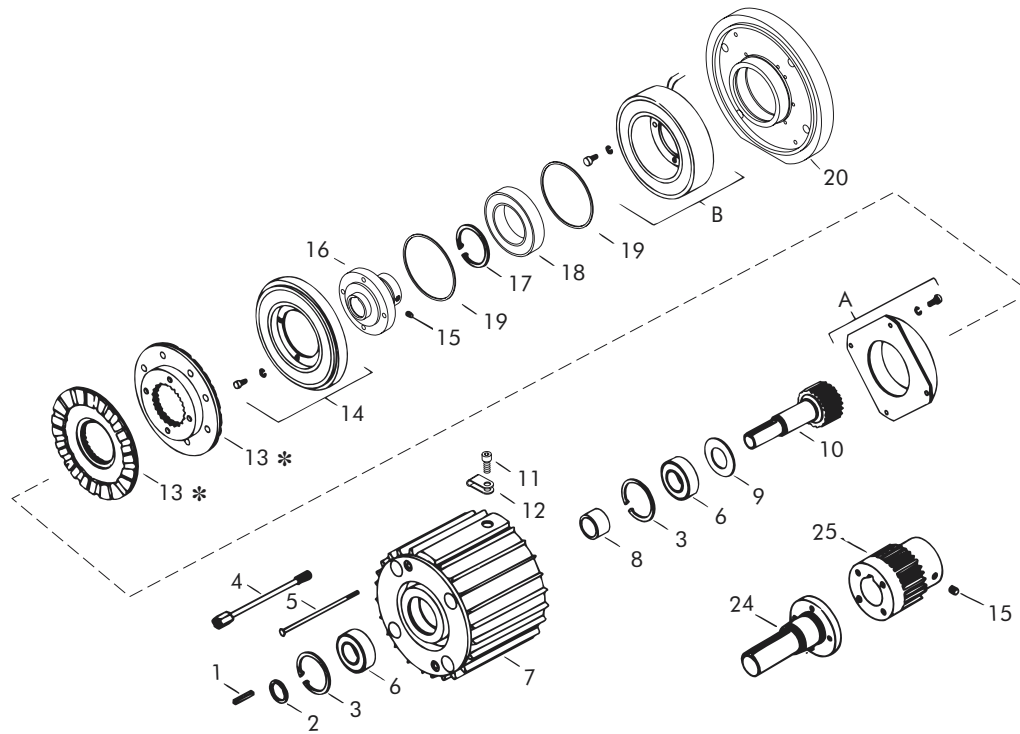


Toll Free Phone (877) SERV098

Toll Free Fax (877) SERV099

www.electromate.com

sales@electromate.com



Replacement Parts

Item	Qty.	Description	Model No.
			Clutch-Brake Module
			CBP-184-125-E
1	2	Key	326770
2	1	Retaining Ring	RY-20191
3	1	Retaining Ring	RY-20114
4	4	Tie Bolt	650378
5	2	Assembly Screw	RY-20193
6	2	Bearing	RY-20115
7	1	Housing	650377-1
8	1	Bearing Spacers	326699
9	1	Washer	326769-2
10	1	Splined Shaft	650340-20
11	1	Cap Screw	DY-10278
12	1	Wire Clip	36-42-3
13	2	Armature	307382-1
14	1	Rotor	307820-11
15	2	Setscrew	–
16	1	Rotor Hub	307751-8
17	1	Retaining Ring	327064
18	1	Bearing	RY-20210
19	2	Retaining	DY-15117
20	1	End Cap	650380-3
21	8	Screw (not shown)	DY-644
22	12	Washer (not shown)	DY-4498
23	6	Screw (not shown)	–
24	1	Brake Shaft	–
25	1	Brake Hub	–
26	1	Retaining Ring (not shown)	–
A	1	Brake Field	
		24 Volts	307353-4
		90 Volts	307354-4
B	1	Clutch Field	
		24 Volts	307713-5
		90 Volts	307714-5

* Current design armatures are solid.

Sold & Serviced By:



Toll Free Phone (877) SERV098

Toll Free Fax (877) SERV099

www.electromate.com

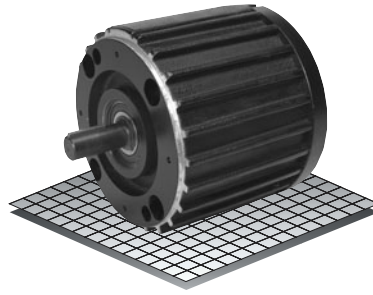
sales@electromate.com

Clutch-Brake Modules

Enclosed Housing

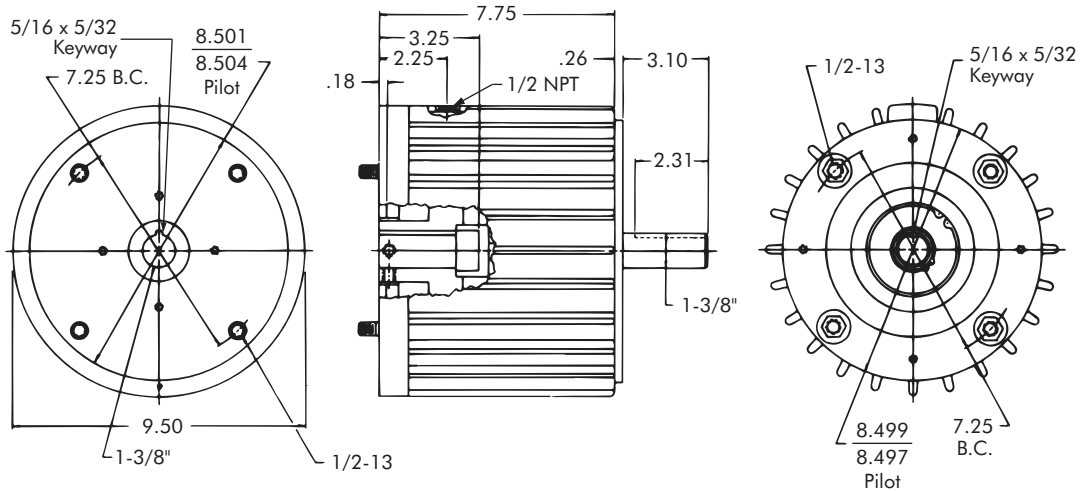
Model

● CBP-215-125-E



- ▶ Factory Assembled and Tested
- ▶ Spline Drive
- ▶ 213TC/215TC Flange

Clutch-Brake Module



Technical Data and Torque (In. Lb.)

Model No.	Wt. Lbs.	Static Torque in. lb.	Max. Speed RPM	Coil Voltage vdc	* Rated Current amps	RPM									
						0	300	600	900	1200	1500	1800	2400	3000	3600
CBP-215-125-E	49	1500	3600	90	.46	1500	1320	1140	1020	960	900	804	636	516	420

Refer to Section M for torque and heat dissipation curves.

* Rated Current for 90v

	Model No.
	CBP-215-125-E
24 Volts	307194-163
90 Volts	307194-164

To order use number shown in table above:
example – for 90 volt CBP-215-125-E, order 307194-164.

For controls, see Section K.

Sold & Serviced By:



Toll Free Phone (877) SERV098

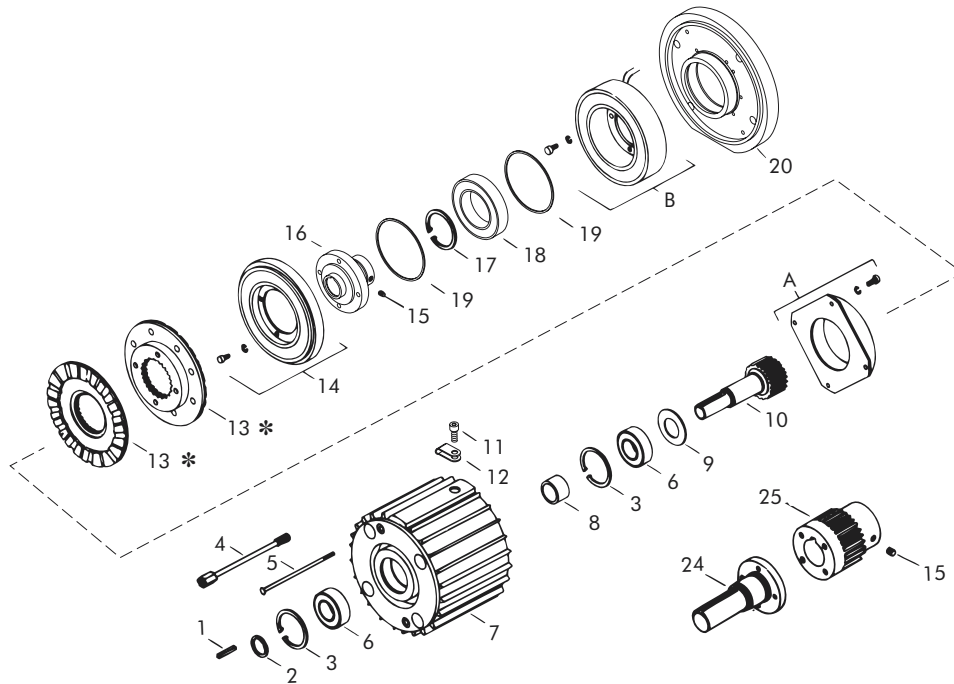
Toll Free Fax (877) SERV099

www.electromate.com

sales@electromate.com

Enclosed Housing

Clutch-Brake Modules – Replacement Parts



Replacement Parts

Item	Qty.	Description	Model No.
			Clutch-Brake Module
			CBP-215-125-E
1	2	Key	326771
2	1	Retaining Ring	RY-20191
3	1	Retaining Ring	RY-20114
4	4	Tie Bolt	650378
5	2	Assembly Screw	RY-20193
6	2	Bearing	RY-20115
7	1	Housing	650377-1
8	1	Bearing Spacer	326699
9	1	Washer	326769-2
10	1	Splined Shaft	650340-21
11	1	Cap Screw	DY-10278
12	1	Wire Clip	36-42-3
13	2	Armature	307382-1
14	1	Rotor	307820-11
15	2	Setscrew	–
16	1	Rotor Hub	307751-9
17	1	Retaining Ring	327064
18	1	Bearing	RY-20210
19	2	Retaining Ring	DY-15117
20	1	End Cap	650380-3
21	8	Screw	DY-644
22	12	Washer	DY-4498
23	6	Screw (not shown)	–
24	1	Brake Shaft	–
25	1	Brake Hub	–
26	1	Retaining Ring (not shown)	–
A	1	Brake Field	
		24 Volts	307353-4
		90 Volts	307354-4
B	1	Clutch Field	
		24 Volts	307713-5
		90 Volts	307714-5

* Current design armatures are solid.

Sold & Serviced By:

 **ELECTROMATE**

Toll Free Phone (877) SERV098

Toll Free Fax (877) SERV099

www.electromate.com

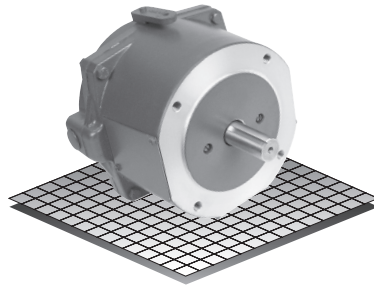
sales@electromate.com

DC Motor Coupler Brakes

Enclosed Housing

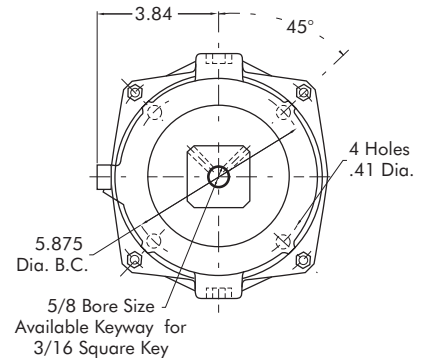
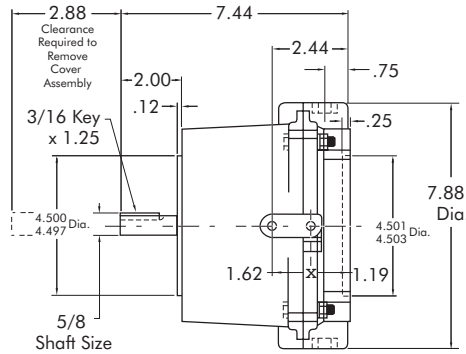
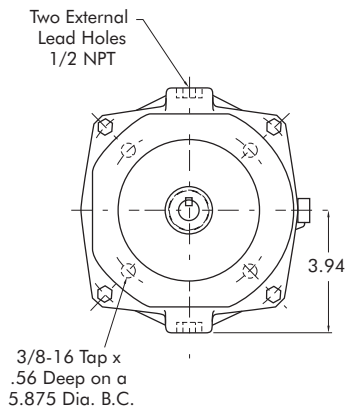
Models

- SSBP-56-6
- SSBP-56-10



- ▶ Factory Assembled and Tested
- ▶ Manual Release
- ▶ DC Power Off
- ▶ Coupler
- ▶ 56C

DC Coupler Brake



Technical Data and Torque (In. Lb.)

Model No.	Wt. Lbs.	Static Torque In. Lb.	DIRECT CURRENT		
			Voltage	Current Amps	Resistance Ohms
SSBP-56	13	72 or 120	24	.81	29.5
			90	.25	390

	Model No.	
	SSBP-56-6 72 In. Lb. Part No.	SSBP-56-10 120 In. Lb. Part No.
24 VDC	M52A062Y	M53A072Y
90 VDC	M52A062X	M53A072X
Friction Disc Kit	327202	327202-1
24 VDC Solenoid	327208	327208
90 VDC Solenoid	327209	327209

Must be direct-coupled; not recommended for belted or other overhung load applications.

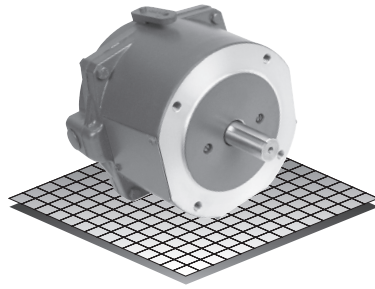
Sold & Serviced By:

 Toll Free Phone (877) SERV098
 Toll Free Fax (877) SERV099
www.electromate.com
sales@electromate.com

Enclosed Housing

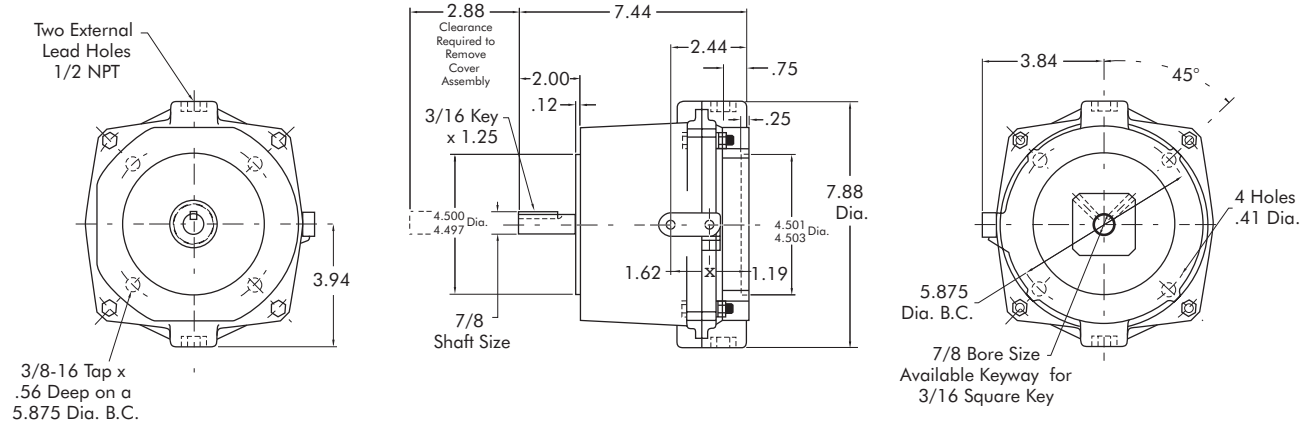
Models

- SSBP-145-6
- SSBP-145-10



- ▶ Factory Assembled and Tested
- ▶ Manual Release
- ▶ DC Power Off
- ▶ Coupler
- ▶ 145TC

DC Coupler Brake



Technical Data and Torque (In. Lb.)

Model No.	Wt. Lbs.	Static Torque In. Lb.	DIRECT CURRENT		
			Voltage	Current Amps	Resistance Ohms
SSBP-145	13	72 or 120	24	.81	29.5
			90	.25	390

	Model No.	
	SSBP-145-6 72 In. Lb. Part No.	SSBP-145-10 120 In. Lb. Part No.
24 VDC	M52C062Y	M53C072Y
90 VDC	M52C062X	M53C072X
Friction Disc Kit	327202	327202-1
24 VDC Solenoid	327208	327208
90 VDC Solenoid	327209	327209

Must be direct-coupled; not recommended for belted or other overhung load applications

Shaft Input Modules

Selection

The shaft input module gives the flexibility of belt drive into clutch and clutch-brake units that are mounted directly to C-Face gear boxes.

The Module Base may be used in applications where the CBP Modules will have:

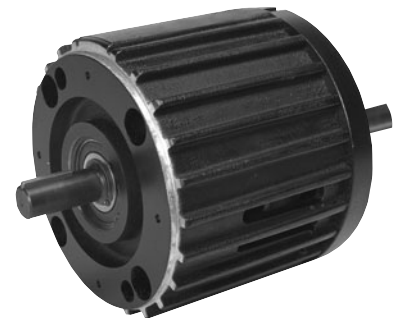
- Belt drive in and out of the clutch-brake module.
- Direct couple in and out of the clutch-brake module.
- Any combination of the above.

Selection Chart – SI Shaft Input and SIB Shaft Input with Base

HP	RPM	NEMA Frame	Clutch-Brake
1/4	1800	48YC/56C	CBP-56-22-SI or SIB CBP-56-22-SI or SIB
	1200	48YC/56C	
1/3	3600	48YC/56C	CBP-56-22-SI or SIB CBP-56-22-SI or SIB CBP-56-22-SI or SIB
	1800	48YC/56C	
	1200	56C	
1/2	3600	56C	CBP-56-22-SI or SIB CBP-56-22-SI or SIB CBP-56-22-SI or SIB
	1800	56C	
	1200	56C	
3/4	3600	56C	CBP-56-22-SI or SIB CBP-56-22-SI or SIB CBP-56-22-SI or SIB CBP-145-22-SI or SIB
	1800	56C	
	1200	56C	
	1200	143TC	
1	3600	56C	CBP-56-22-SI or SIB CBP-56-22-SI or SIB CBP-145-22-SI or SIB CBP-56-22-SI or SIB CBP-145-22-SI or SIB
	1800	56C	
	1800	143TC	
	1200	56C	
	1200	145TC	
1-1/2	3600	56C	CBP-56-22-SI or SIB CBP-145-22-SI or SIB CBP-56-22-SI or SIB CBP-145-22-SI or SIB CBP-145-32-SI or SIB
	3600	143TC	
	1800	56C	
	1800	145TC/184C	
	1200	145TC/184C	
2	3600	56C	CBP-56-22-SI or SIB CBP-145-22-SI or SIB CBP-56-32-SI or SIB CBP-145-32-SI or SIB CBP-184-125-SI or SIB CBP-184-125-SI or SIB
	3600	143TC	
	1800	56C	
	1800	145TC/184C	
	1800	182TC/213C	
	1200	145TC/184C	
	1200	182TC/184C/213C	
3	3600	145TC/184C	CBP-145-32-SI or SIB CBP-184-125-SI or SIB CBP-184-125-SI or SIB
	1800	145TC/184C	
	1800	182TC/184TC/213C	
	1200	184TC/213C/215C	
5	3600	145TC/184C	CBP-184-125-SI or SIB CBP-184-125-SI or SIB CBP-184-125-SIB
	3600	184TC/213C	
	1800	145TC/184C	
	1800	184TC/213C	
	1200	184TC/213C	
7 - 1/2	3600	184TC	CBP-184-125-SI or SIB CBP-184-125-SIB CBP-184-125-SIB
	3600		
	1800		



CBP-56-22 or -32-SI
CBP-145-22 or -32-SI



CBP-184-125-SI

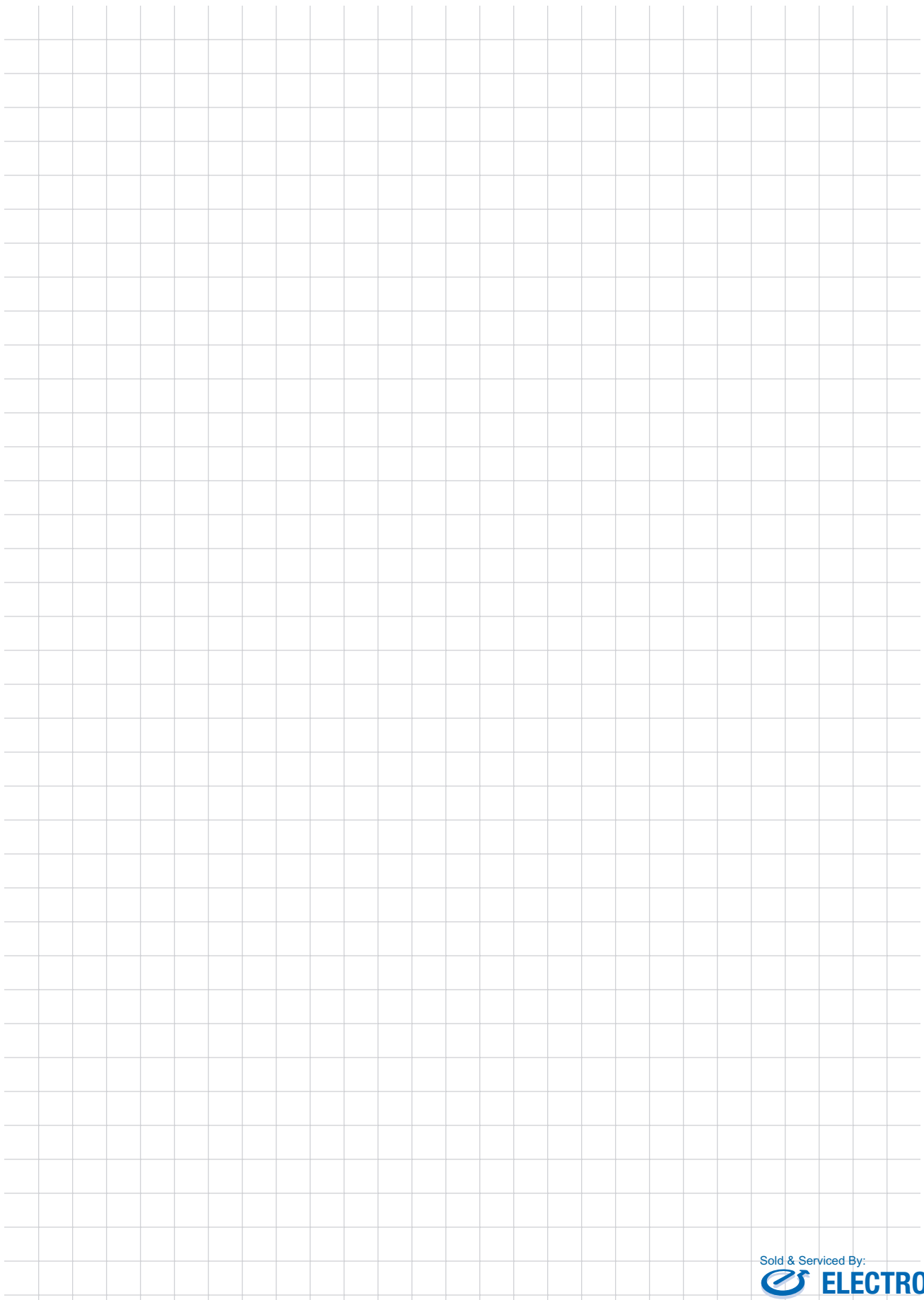


CBP-56-22 or -32-SIB
CBP-145-22 or -32-SIB

Use this chart when the cycle rate is less than 15 CPM.

For applications where the starts and/or stops exceed 15 CPM, heat dissipation capabilities should be considered in addition to torque requirements. Refer to Engineering Section M.

Sold & Serviced By:
 **ELECTROMATE**
 Toll Free Phone (877) SERV098
 Toll Free Fax (877) SERV099
www.electromate.com
sales@electromate.com



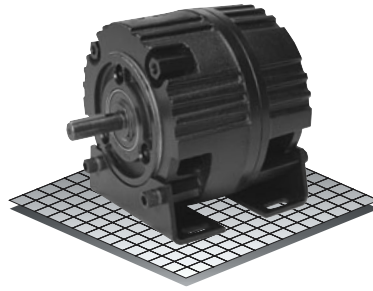
Sold & Serviced By: _____
 **ELECTROMATE**
Toll Free Phone (877) SERV098
Toll Free Fax (877) SERV099
www.electromate.com
sales@electromate.com

Shaft Input Modules

Open Drip Proof

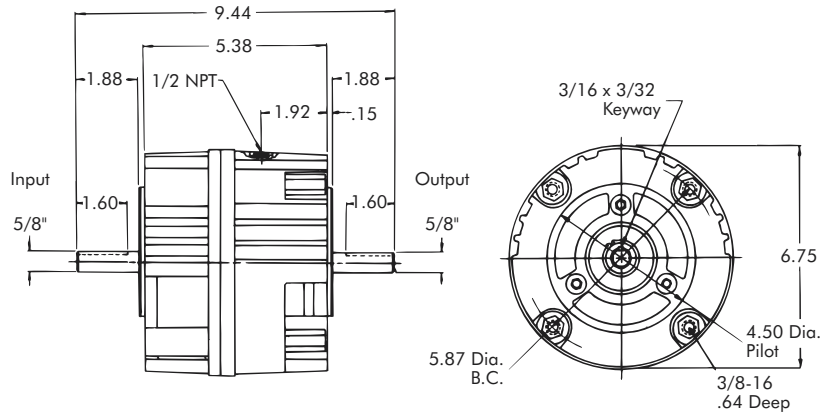
Models

- CBP-56-22-SI
- CBP-56-32-SI
- CBP-56-22-SIB
- CBP-56-32-SIB

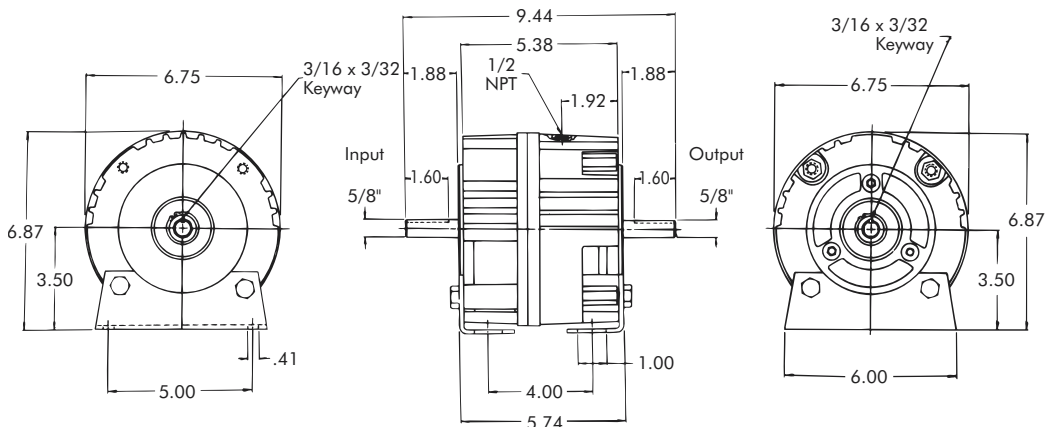


- ▶ Factory Assembled and Tested
- ▶ Spline Drive
- ▶ Shaft Input
- ▶ Mounting Base (SIB)

SI Clutch-Brake Module



SIB Clutch-Brake Module



Technical Data and Torque (In. Lb.)

Model No.	Wt. Lbs.	Static Torque in. lb.	Max. Speed RPM	Coil Voltage vdc	* Rated Current amps	RPM									
						0	300	600	900	1200	1500	1800	2400	3000	3600
CBP-56-22-SI	16	264	3600	90	.18	264	216	192	180	168	156	156	144	132	120
CBP-56-22-SIB	16														
CBP-56-32-SI	16	384	3600	90	.18	384	312	276	264	240	228	228	216	192	168
CBP-56-32-SIB	16														

* Rated Current for 90v

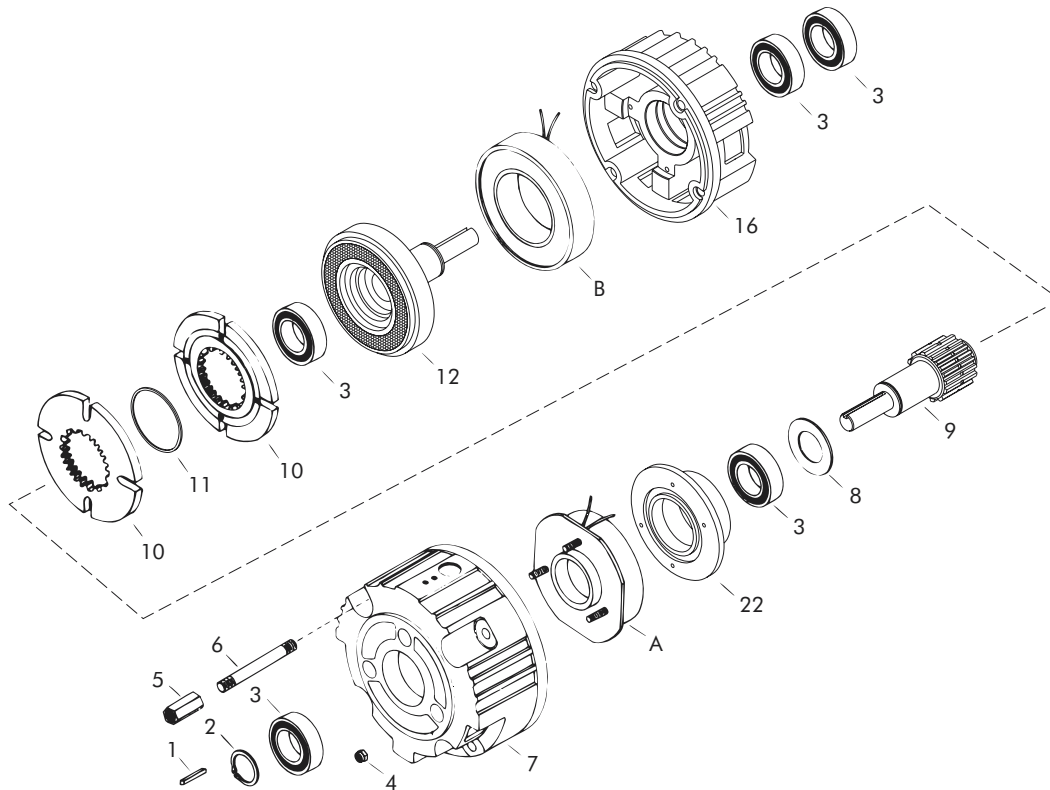
Refer to Section M for torque and heat dissipation curves.

	SI Module No.		SIB Module No.	
	CBP-56-22-SI	CBP-56-32-SI	CBP-56-22-SIB	CBP-56-32-SIB
24 V	304194-42	304294-42	304194-50	304294-50
90 V	304194-43	304294-43	304194-51	304294-51

To order use number shown in table above: example – for 90 Volt CBP-56-32-SI, order 304294-43.
For controls, see Section K.

Sold & Serviced By:

Toll Free Phone (877) SERV098
Toll Free Fax (877) SERV099
www.electromate.com
sales@electromate.com



Replacement Parts

Item	Qty.	Description	Model No.			
			Clutch-Brake Module			
			CBP-56-22-SI	CBP-56-32-SI	CBP-56-22-SIB	CBP-56-32-SIB
1	2	Input/Output Key	DY-11212	DY-11212	DY-11212	DY-11212
2	2	Retaining Ring	DY-1102	DY-1102	DY-1102	DY-1102
3	4	Bearing	DY-11500	DY-11500	DY-11500	DY-11500
4	3	Locknut	RY-20113	RY-20113	RY-20113	RY-20113
5	4	Hex Nut	326850	326850	326850	326850
6	4	Stud	326851-3	326851-3	326851-3	326851-3
7	1	Brake End Bell	650337-3	650337-3	650337-3	650337-3
8	1	Teflon Washer	326960	326960	326960	326960
9	1	Output Shaft and Hub	650340-7	650340-7	650340-7	650340-7
10	2	Armature	304396-8	304396-8	304396-8	304396-8
11	3	Retaining Ring	RY-20310	RY-20310	RY-20310	RY-20310
12	1	Input Shaft and Rotor	304528-5	304528-3	304528-5	304528-3
13	2	Retaining Ring (n/s)	DY-10860	DY-10860	DY-10860	DY-10860
16	1	Clutch End Bell	650389	650389	650389	650389
17	3	Cap Screw	RY-20374	RY-20374	RY-20374	RY-20374
18	3	Lock Washer	DY-1548	DY-1548	DY-1548	DY-1548
19	2	Base (SIB Only) (n/s)	-	-	650364-6	650364-6
20	4	Cap Screw (n/s)	-	-	DY-12710	DY-12710
21	4	Lock Washer (n/s)	-	-	DY-4472	DY-4472
22	1	Bearing Support	-	-	-	-
23	3	Button Screw (n/s)	-	-	-	-
A	1	Brake Field				
		24 Volt DC	304353-14	304353-6	304353-14	304353-6
		90 Volt DC	304354-14	304354-6	304354-14	304354-6
B	1	Clutch Field				
		24 Volt DC	304333-11	304333-12	304333-11	304333-12
		90 Volt DC	304334-11	304334-12	304334-11	304334-12

Sold & Serviced By:



Toll Free Phone (877) SERV098

Toll Free Fax (877) SERV099

www.electromate.com

sales@electromate.com

Shaft Input Modules

Open Drip Proof

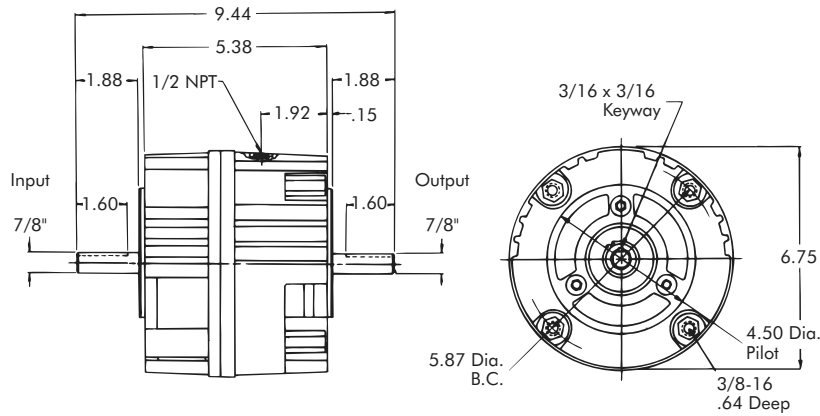
Models

- CBP-145-22-SI
- CBP-145-32-SI
- CBP-145-22-SIB
- CBP-145-32-SIB
- CP-145-32-SIB

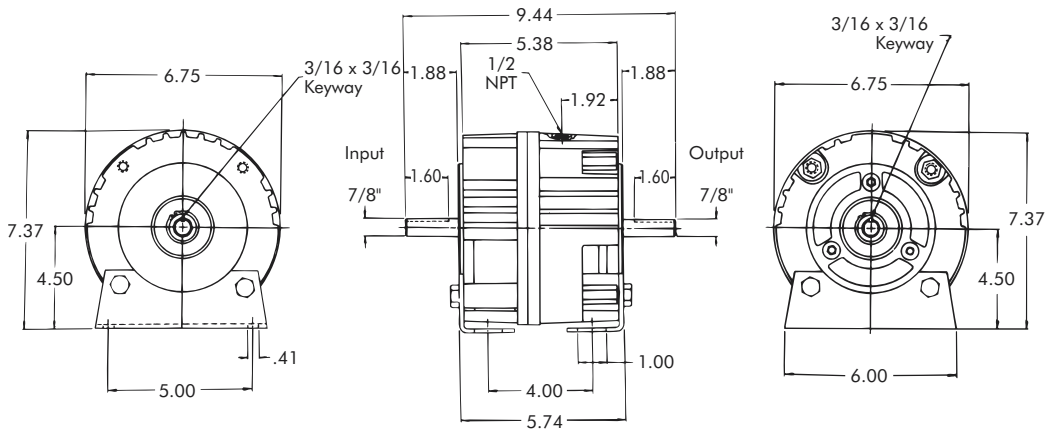


- ▶ Factory Assembled and Tested
- ▶ Spline Drive
- ▶ Shaft Input
- ▶ Mounting Base (SIB)

SI Clutch-Brake Module



SIB Clutch-Brake Module or Clutch Module



Technical Data and Torque (In. Lb.)

Model No.	Wt. Lbs.	Static Torque in. lb.	Max. Speed RPM	Coil Voltage vdc	* Rated Current amps	RPM									
						0	300	600	900	1200	1500	1800	2400	3000	3600
CBP-145-22-SI	16	264	3600	90	.18	264	216	192	180	168	156	156	144	132	120
CBP-145-22-SIB	16														
CBP-145-32-SI	16	384	3600	90	.18	384	312	276	264	240	228	228	216	192	168
CBP-145-32-SIB	16														
CP-145-32-SIB	12														

* Rated Current for 90v

Refer to Section M for torque and heat dissipation curves.

	SI Module No.		SIB Module No.		
	CBP-145-22-SI	CBP-145-32-SI	CBP-145-22-SIB	CBP-145-32-SIB	CP-145-32-SIB
24 V	304194-46	304294-46	304194-54	304294-54	-
90 V	304194-47	304294-47	304194-55	304294-55	304296-55

To order use number shown in table above: example – for 90 Volt CBP-145-22-SI, order 304194-47.

For controls, see Section K.

Sold & Serviced By:

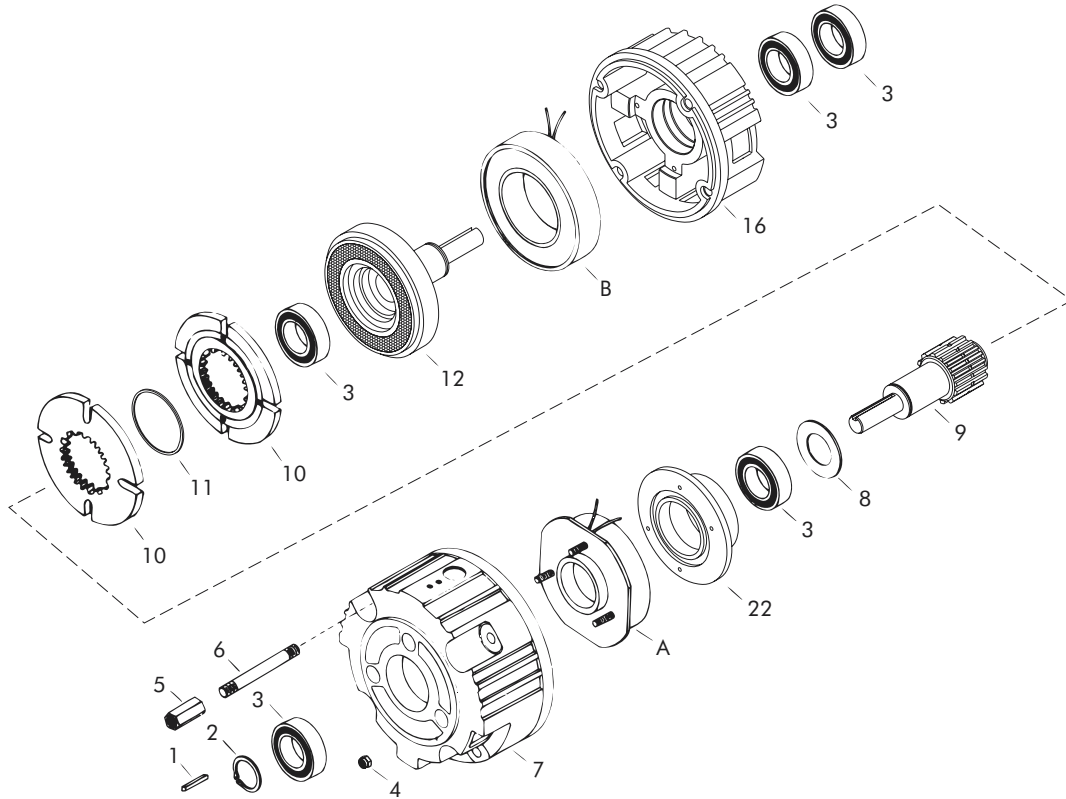


Toll Free Phone (877) SERV098

Toll Free Fax (877) SERV099

www.electromate.com

sales@electromate.com



Replacement Parts

Item	Qty.	Description	Model No.				
			Clutch-Brake Module				Clutch Module
			CBP-145-22-SI	CBP-145-32-SI	CBP-145-22-SIB	CBP-145-32-SIB	
1	2	Input/Output Key	DY-11212	DY-11212	DY-11212	DY-11212	DY-11212
2	2	Retaining Ring	DY-1102	DY-1102	DY-1102	DY-1102	DY-1102
3	4	Bearing	DY-11500	DY-11500	DY-11500	DY-11500	DY-11500
4	3	Locknut	RY-20113	RY-20113	RY-20113	RY-20113	RY-20113
5	4	Hex Nut	326850	326850	326850	326850	326850
6	4	Stud	326851-3	326851-3	326851-3	326851-3	326851-3
7	1	Brake End Bell	650337-3	650337-3	650337-3	650337-3	650337-3
8	1	Teflon Washer	326960	326960	326960	326960	326960
9	1	Output Shaft and Hub	650340-8	650340-8	650340-8	650340-8	650340-8
10	2 ●	Armature	304396-8	304396-8	304396-8	304396-8	304396-8
11	3	Retaining Ring	RY-20310	RY-20310	RY-20310	RY-20310	RY-20310
12	1	Input Shaft and Rotor	304528-6	304528-4	304528-6	304528-4	304528-4
13	2	Retaining Ring	DY-10860	DY-10860	DY-10860	DY-10860	DY-10860
16	1	Clutch End Bell	650389	650389	650389	650389	650389
17	3	Cap Screw	RY-20374	RY-20374	RY-20374	RY-20374	RY-20374
18	3	Lock Washer	DY-1548	DY-1548	DY-1548	DY-1548	DY-1548
19	2	Base (SIB Only)	–	–	650364-7	650364-7	650364-7
20	4	Cap Screw	–	–	DY-12710	DY-12710	DY-12710
21	4	Lock Washer	–	–	DY-4472	DY-4472	DY-4472
22	1	Bearing Support	–	–	–	–	304440-7
23	3	Button Screw	–	–	–	–	RY-20316
A	1	Brake Field					
		24 Volt DC	304353-14	304353-6	304353-14	304353-6	–
		90 Volt DC	304354-14	304354-6	304354-14	304354-6	–
B	1	Clutch Field					
		24 Volt DC	304333-11	304333-12	304333-11	304333-12	304333-11
		90 Volt DC	304334-11	304334-12	304334-11	304334-12	304334-11

● Qty. 1 on Clutch Module

Sold & Serviced By:



Toll Free Phone (877) SERV098

Toll Free Fax (877) SERV099

www.electromate.com

sales@electromate.com

Shaft Input Modules

Open Drip Proof

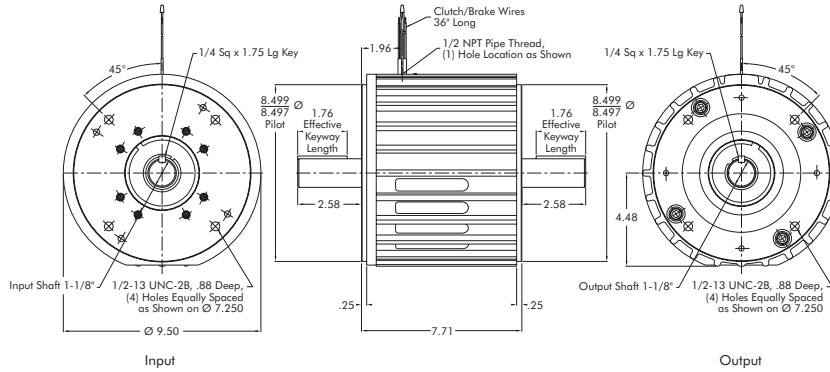
Models

- CBP-184-125-SI
- CBP-184-125-SIB

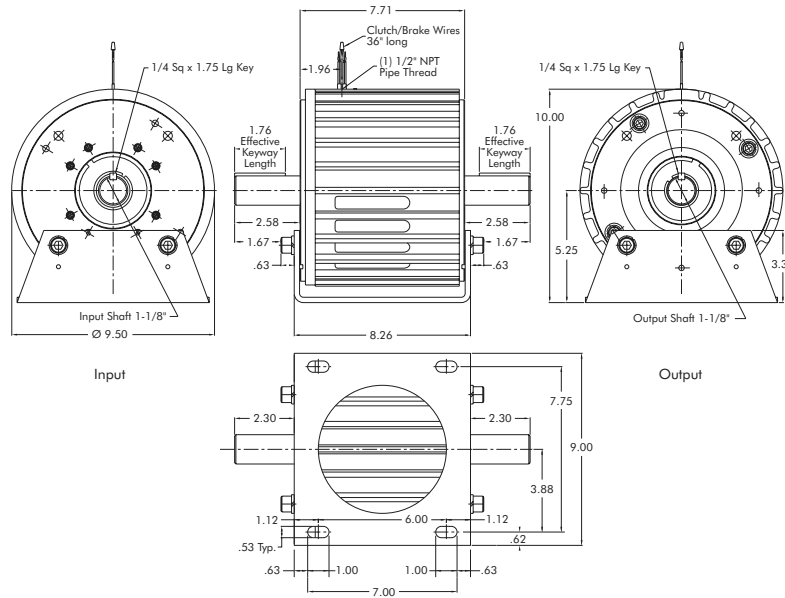


- ▶ Factory Assembled and Tested
- ▶ Spline Drive
- ▶ Shaft Input
- ▶ Mounting Base (SIB)

Clutch-Brake Module



Clutch-Brake Module



Technical Data and Torque (In. Lb.)

Model No.	Wt. Lbs.	Static Torque in. lb.	Max. Speed RPM	Coil Voltage vdc	* Rated Current amps	RPM									
						0	300	600	900	1200	1500	1800	2400	3000	3600
CBP-184-125-SI	49	1500	3600	90	.46	1500	1320	1140	1020	960	900	804	636	516	420
CBP-184-125-SIB	49														

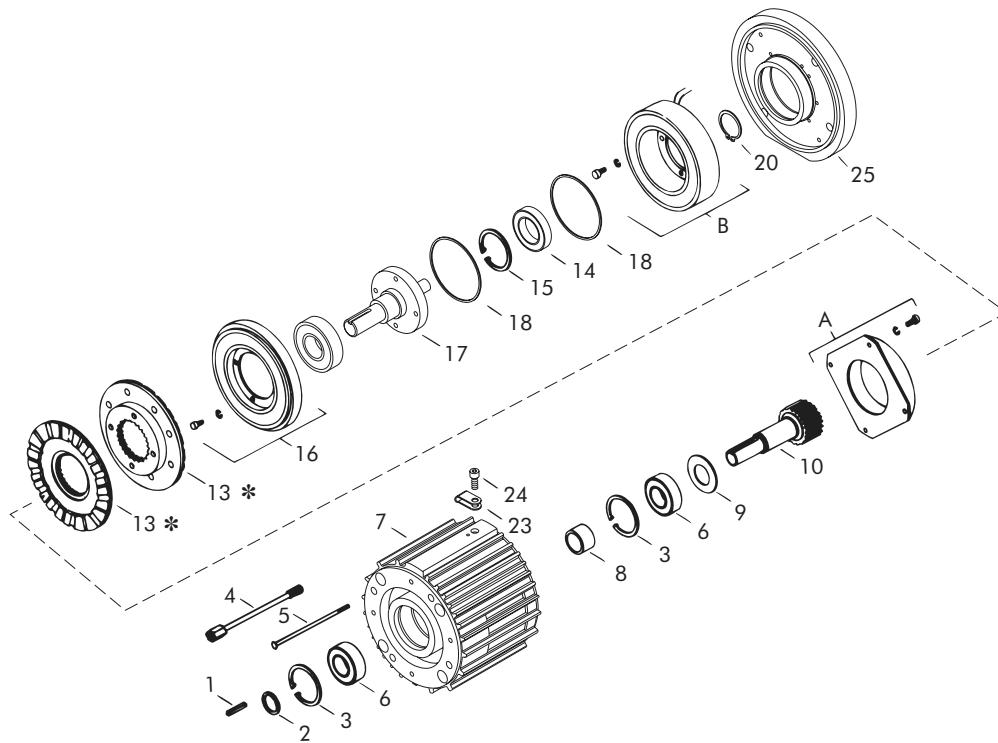
* Rated Current for 90v

Refer to Section M for torque and heat dissipation curves.

	SI Module No.	SIB Module No.
	CBP-184-125-SI	CBP-184-125-SIB
24 Volt	307194-42	307194-50
90 Volt	307194-43	307194-51

To order use number shown in table above: example – for 90 Volt CBP-184-125-SIB, order 307194-51.
For controls, see Section K.

Sold & Serviced By:
ELECTROMATE
 Toll Free Phone (877) SERV098
 Toll Free Fax (877) SERV099
www.electromate.com
sales@electromate.com



Replacement Parts

Item	Qty.	Description	Model No.	
			Clutch-Brake Module	Clutch-Brake Module
			CBP-184-125-SI	CBP-184-125-SIB
1	2	Input/Output Key	326770	326770
2	1	Retaining Ring	RY-20191	RY-20191
3	2	Retaining Ring	RY-20114	RY-20114
4	4	Cap Screw	RY-20380	RY-20380
5	4	Lock Washer (not shown)	DY-4771	DY-4771
6	2	Bearing	RY-20115	RY-20115
7	1	Housing	650377-2	650377-2
8	1	Bearing Spacer	326699	326699
9	1	Felt Washer	326769-2	326769-2
10	1	Output Shaft and Hub	650340-18	650340-18
11	8	Cap Screw (not shown)	DY-644	DY-644
12	8	Lock Washer (not shown)	DY-4498	DY-4498
13	2	Armature	307382-1	307382-1
14	1	Bearing	RY-20073	RY-20073
15	1	Retaining Ring	RY-20379	RY-20379
16	1	Rotor	307820-11	307820-11
17	1	Input Shaft and Hub	650340-16	650340-16
18	2	Retaining Ring	DY-11735	DY-11735
19	1	Bearing	DY-10228	DY-10228
20	1	Retaining Ring	RY-20017	RY-20017
21	8	Cap Screw (not shown)	RY-20276	RY-20276
22	8	Lock Washer (not shown)	101263	101263
23	1	Wire Clip	36-42-3	36-42-3
24	1	Cap Screw	DY-10278	DY-10278
25	1	Clutch End Cap	650380-2	650380-2
26	1	Base (SIB Only)	–	650363-7
30	4	Cap Screw	–	RY-20381
31	4	Lock Washer	–	DY-4473
A	1	Brake Field		
		24 Volt DC	307353-4	307353-4
		90 Volt DC	307354-4	307354-4
B	1	Clutch Field		
		24 Volt DC	307713-5	307713-5
		90 Volt DC	307714-5	307714-5

* Current design armatures are solid.

Sold & Serviced By:



Toll Free Phone (877) SERV098

Toll Free Fax (877) SERV099

www.electromate.com

sales@electromate.com



Sold & Serviced By:  **ELECTROMATE**
Toll Free Phone (877) SERV098
Toll Free Fax (877) SERV099
www.electromate.com
sales@electromate.com

Selection

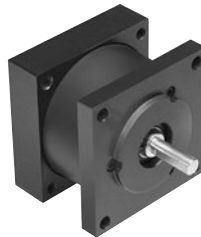
AC Motor Brakes/Bolt On Servo Brakes



Selection Chart – AC Motor Brakes

HP	RPM	Nema Frame	Rear Mounted	Coupler
1/4	1800 1200	48YC / 56C 48YC / 56C	SSMBP-56AC-3 SSMBP-56AC-3	SSBP-56AC-3 SSBP-56AC-3
1/3	3600 1800 1200	48YC / 56C 48YC / 56C 56C	SSMBP-56AC-3 SSMBP-56AC-3 SSMBP-56AC-3	SSBP-56AC-3 SSBP-56AC-3 SSBP-56AC-3
1/2	3600 1800 1200	56C 56C 56C	SSMBP-56AC-3 SSMBP-56AC-3 SSMBP-56AC-6	SSBP-56AC-3 SSBP-56AC-3 SSBP-56AC-6
3/4	3600 1800 1200 1200	56C 56C 56C 143TC	SSMBP-56AC-3 SSMBP-56AC-6 SSMBP-56AC-6 SSMBP-145AC-6	SSBP-56AC-3 SSBP-56AC-6 SSBP-56AC-6 SSBP-145AC-6
1	3600 1800 1800 1200 1200	56C 56C 143TC 56C 145TC	SSMBP-56AC-3 SSMBP-56AC-6 SSMBP-145AC-6 — SSMBP-145AC-10	SSBP-56AC-3 SSBP-56AC-6 SSBP-145AC-6 SSBP-56AC-10 SSBP-145AC-10
1-1/2	3600 3600 1800 1800 1200	56C 143TC 56C 145TC / 184C 145TC / 184C	SSMBP-56AC-6 SSMBP-145AC-6 — SSMBP-145AC-10 SSMBP-145AC-10	SSBP-56AC-6 SSBP-145AC-6 SSBP-56AC-10 SSBP-145AC-10 SSBP-145AC-10
2	3600 3600 1800 1800	56C 143TC 56C 145TC / 184C	SSMBP-56AC-6 SSMBP-145AC-6 — SSMBP-145AC-10	SSBP-56AC-6 SSBP-145AC-6 SSBP-56AC-10 SSBP-145AC-10

Selection chart uses a 1.4 service factor



Selection Chart – Bolt On Servo Brakes

Holding Torque	Nema Frame	Shaft Dia.	Model No.
3 In. Lbs.	23	1/4	SSBP-23-3
15 In. Lbs. 15 In. Lbs.	34 34	3/8 1/2	SSBP-34-15 SSBP-34-15
50 In. Lbs.	42	5/8	SSBP-42-50

Sold & Serviced By:



Toll Free Phone (877) SERV098

Toll Free Fax (877) SERV099

www.electromate.com

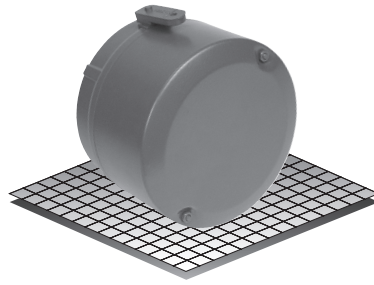
sales@electromate.com

AC Motor Brakes

Enclosed Housing

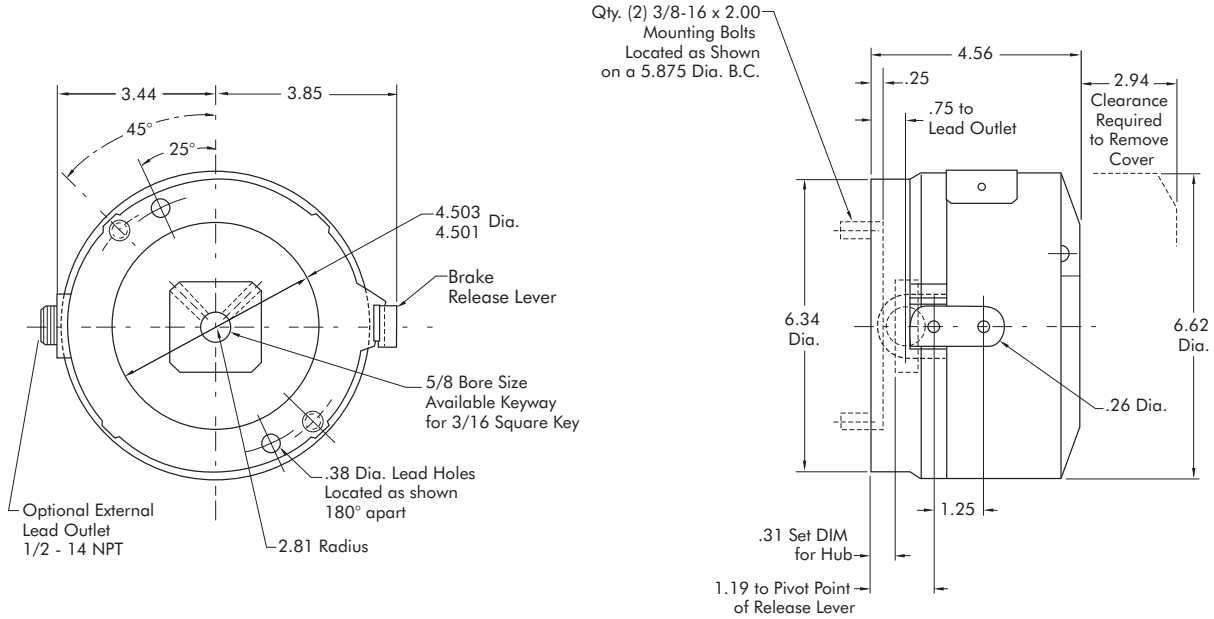
Models

- SSMBP-56AC-3
- SSMBP-56AC-6



- ▶ Factory Assembled and Tested
- ▶ Manual Release
- ▶ AC Power Off
- ▶ Rear Mounted
- ▶ 56C

AC Rear Mounted Brake



Technical Data and Torque (Ft. Lb.)

Model No.	Wt. Lbs.	Static Torque Ft. Lb.	SINGLE PHASE, 60 HZ			SINGLE PHASE, 60HZ		
			Voltage	Current Holding Amps	Current Inrush Amps	Voltage	Current Holding Amps	Current Inrush Amps
SSMBP-56AC-3	10	3	115/230	.54/.27	4.8/2.4	230/460	.27/.13	2.6/1.3
SSMBP-56AC-6	10	6						

	Model No.	
	SSMBP-56AC-3	SSMBP-56AC-6
115/230, 60HZ	F51A0321	F52A0621
230/460, 60HZ	F51A0324	F52A0624
Service Parts	All 3 Ft. Lb. Brakes	All 6 Ft. Lb. Brakes
Friction Disc Kit	327201	327202
Solenoid 115/230, 60HZ	327203	327203
Solenoid 230/460, 60HZ	327204	327204

Sold & Serviced By:



Toll Free Phone (877) SERV098

Toll Free Fax (877) SERV099

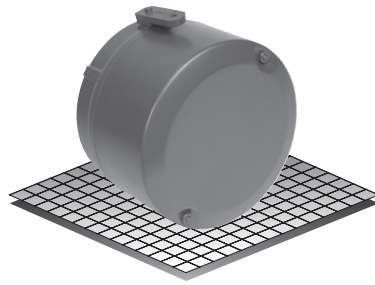
www.electromate.com

sales@electromate.com

Enclosed Housing

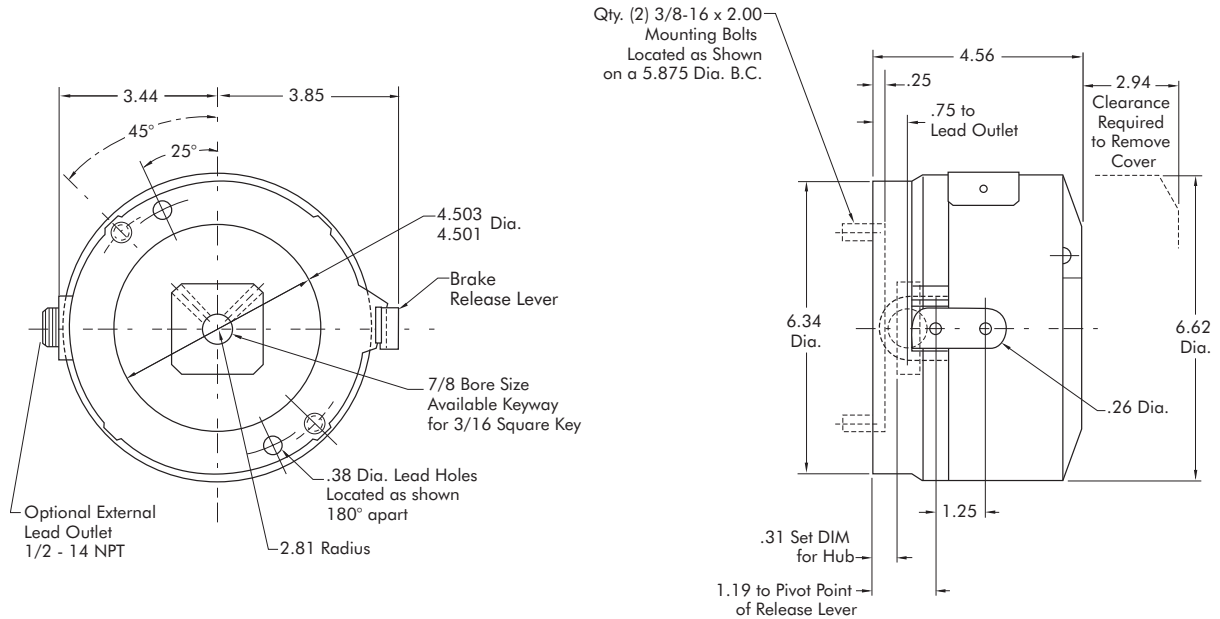
Model

● SSMBP-145AC-10



- ▶ Factory Assembled and Tested
- ▶ Manual Release
- ▶ AC Power Off
- ▶ Rear Mounted
- ▶ 145TC

AC Rear Mounted Brake



Technical Data and Torque (Ft. Lb.)

Model No.	Wt. Lbs.	Static Torque Ft. Lb.	SINGLE PHASE, 60HZ		
			Voltage	Current Holding Amps	Current Inrush Amps
SSMBP-145AC-10	10	10	230/460	.27/.13	2.6/1.3

	Model No.
	SSMBP-145AC-10
230/460, 60HZ	F52C0724
Service Parts	All 10 Ft. Lb. Brakes
Friction Disc Kit	327202
Solenoid 230/460, 60HZ	327204

Sold & Serviced By:



Toll Free Phone (877) SERV098

Toll Free Fax (877) SERV099

www.electromate.com

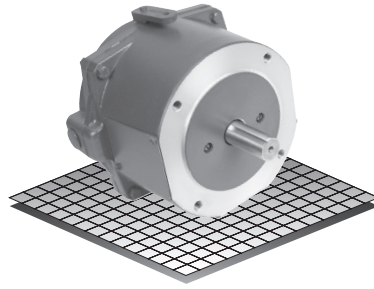
sales@electromate.com

AC Motor Brakes

Enclosed Housing

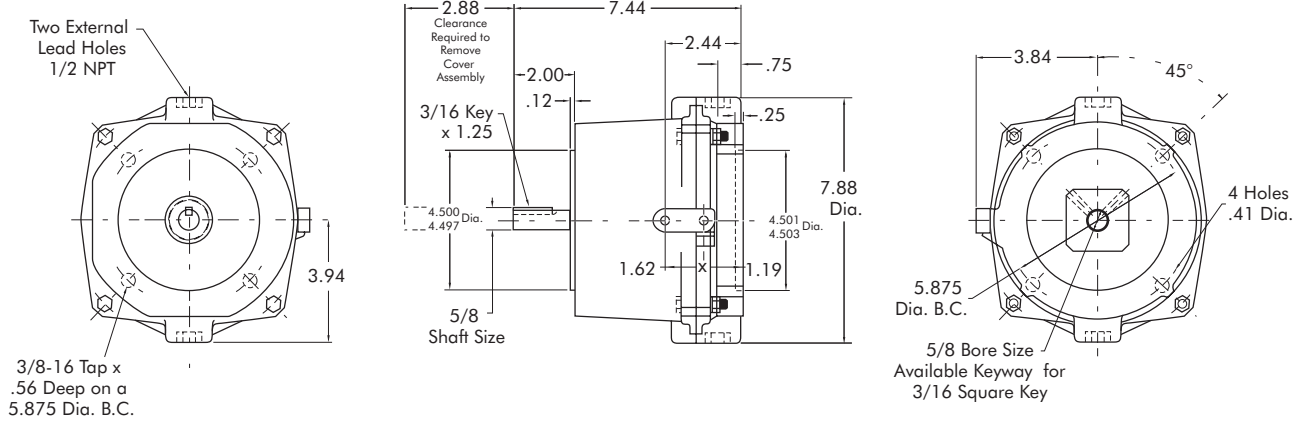
Models

- SSBP-56AC-3
- SSBP-56AC-6



- ▶ Factory Assembled and Tested
- ▶ Manual Release
- ▶ AC Power Off
- ▶ Coupler
- ▶ 56C

AC Coupler Brake



Technical Data and Torque (Ft. Lb.)

Model No.	Wt. Lbs.	Static Torque Ft. Lb.	SINGLE PHASE, 60 HZ			SINGLE PHASE, 60HZ		
			Voltage	Current Holding Amps	Current Inrush Amps	Voltage	Current Holding Amps	Current Inrush Amps
SSBP-56AC-3	13	3	115/230	.54/.27	4.8/2.4	230/460	.27/.13	2.6/1.3
SSBP-56AC-6	13	6						

	Model No.	
	SSBP-56AC-3	SSBP-56AC-6
115/230, 60HZ	M51A0321	M52A0621
230/460, 60HZ	M51A0324	M52A0624
Service Parts	All 3 Ft. Lb. Brakes	All 6 Ft. Lb. Brakes
Friction Disc Kit	327201	327202
Solenoid 115/230, 60HZ	327203	327203
Solenoid 230/460, 60HZ	327204	327204

Must be direct-coupled; not recommended for belted or other overhung load applications.

Sold & Serviced By:



Toll Free Phone (877) SERV098

Toll Free Fax (877) SERV099

www.electromate.com

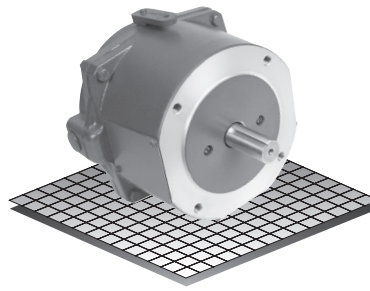
sales@electromate.com

Enclosed Housing

AC Motor Brakes

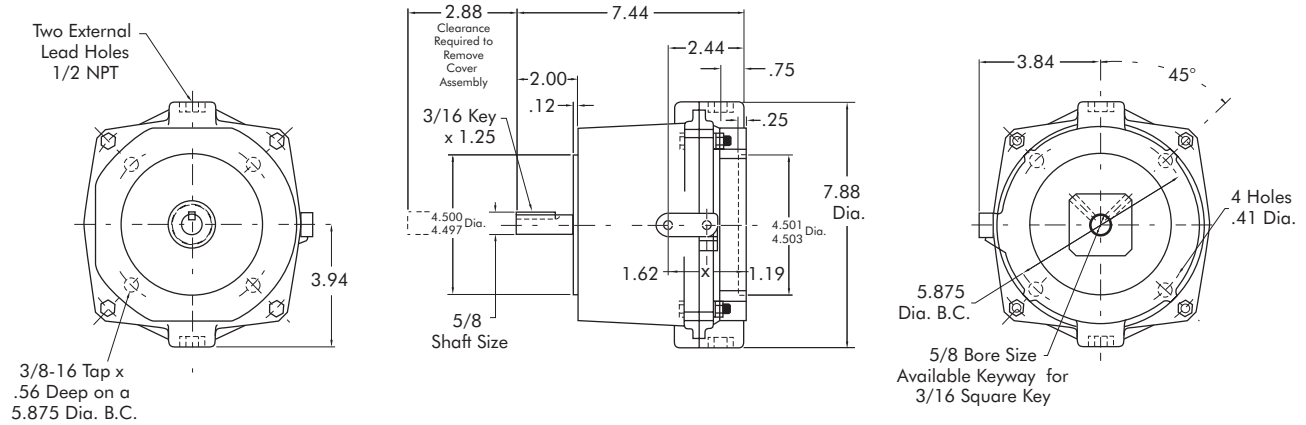
Model

● SSBP-56AC-10



- ▶ Factory Assembled and Tested
- ▶ Manual Release
- ▶ AC Power Off
- ▶ Coupler
- ▶ 56C

AC Coupler Brake



Technical Data and Torque (Ft. Lb.)

Model No.	Wt. Lbs.	Static Torque Ft. Lb.	SINGLE PHASE, 60 HZ		
			Voltage	Current Holding Amps	Current Inrush Amps
SSBP-56AC-10	13	10	115/230	.54/.27	4.8/2.4

	Model No.
	SSBP-56AC-10
115/230, 60HZ	M52A0721
Service Parts	
Friction Disc Kit	327202
Solenoid 115/230, 60HZ	327203

Must be direct-coupled; not recommended for belted or other overhung load applications.

Sold & Serviced By:



Toll Free Phone (877) SERV098

Toll Free Fax (877) SERV099

www.electromate.com

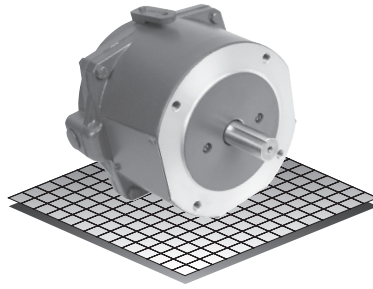
sales@electromate.com

AC Motor Brakes

Enclosed Housing

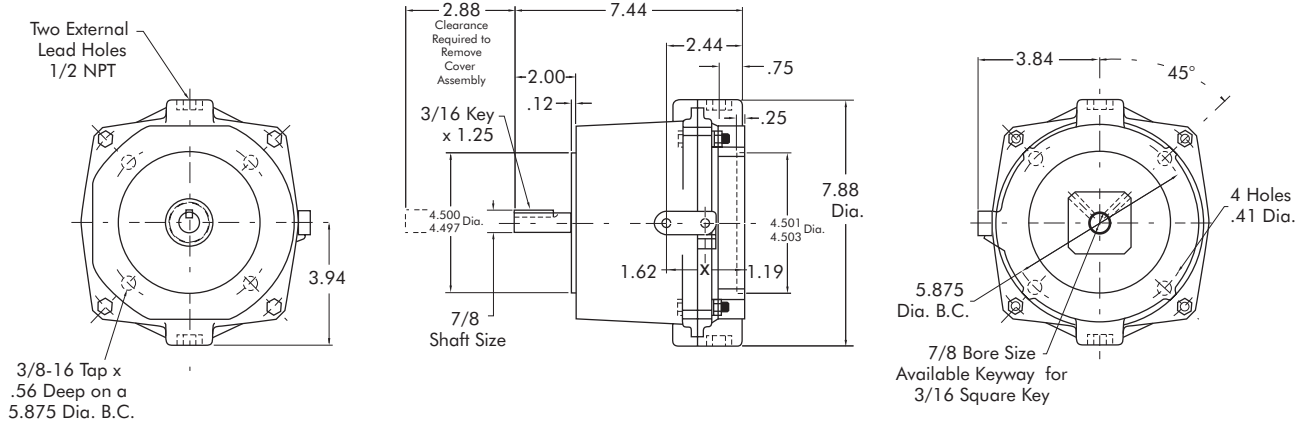
Models

- SSBP-145AC-6
- SSBP-145AC-10



- ▶ Factory Assembled and Tested
- ▶ Manual Release
- ▶ AC Power Off
- ▶ Coupler
- ▶ 145TC

AC Coupler Brake



Technical Data and Torque (Ft. Lb.)

Model No.	Wt. Lbs.	Static Torque Ft. Lb.	SINGLE PHASE, 60 HZ		
			Voltage	Current Holding Amps	Current Inrush Amps
SSBP-145AC-6	13	6	115/230	.54/.27	4.8/2.4
SSBP-145AC-10	13	10			

	Model No.	
	SSBP-145AC-6	SSBP-145AC-10
115/230, 60HZ	M52A0621	M52A0721
Service Parts		
Friction Disc Kit	327202	327202
Solenoid 115/230, 60HZ	327203	327203

Must be direct-coupled; not recommended for belted or other overhung load applications.

Sold & Serviced By:



Toll Free Phone (877) SERV098

Toll Free Fax (877) SERV099

www.electromate.com

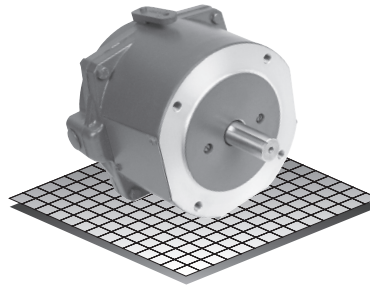
sales@electromate.com

Enclosed Housing

AC Motor Brakes

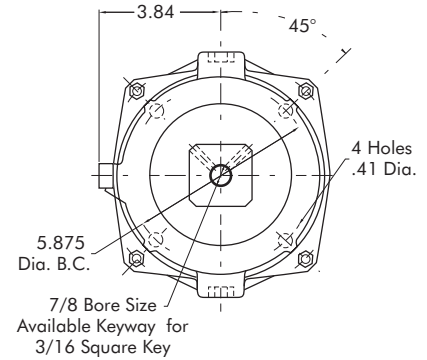
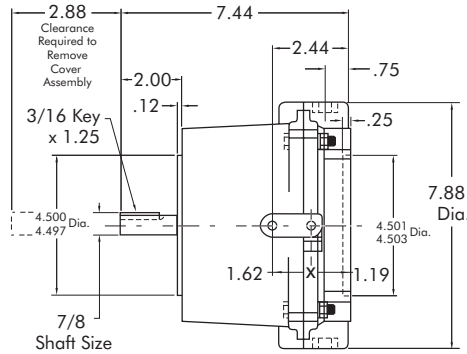
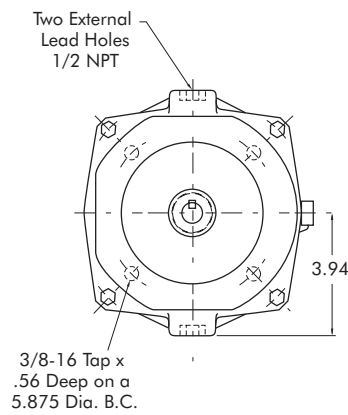
Model

● SSBP-145AC-10



- ▶ Factory Assembled and Tested
- ▶ Manual Release
- ▶ AC Power Off
- ▶ Coupler
- ▶ 145TC

AC Coupler Brake



Technical Data and Torque (Ft. Lb.)

Model No.	Wt. Lbs.	Static Torque Ft. Lb.	SINGLE PHASE, 60HZ		
			Voltage	Current Holding Amps	Current Inrush Amps
SSBP-145AC-10	13	10	230/460	.27/.13	2.6/1.3

	Model No.
	SSBP-145AC-10
230/460, 60HZ	M52C0724
Service Parts	All 10 Ft. Lb. Brakes
Friction Disc Kit	327202
Solenoid 230/460, 60HZ	327204

Must be direct-coupled; not recommended for belted or other overhung load applications.

Sold & Serviced By:



Toll Free Phone (877) SERV098

Toll Free Fax (877) SERV099

www.electromate.com

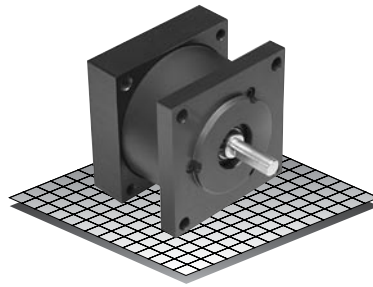
sales@electromate.com

Bolt On Servo Brakes

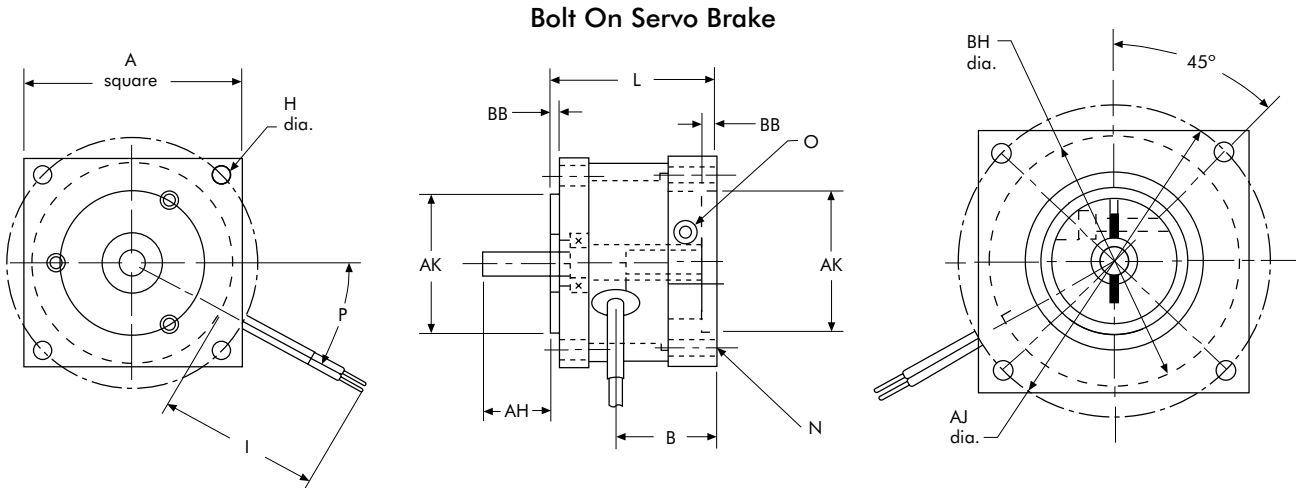
Enclosed Housing

Models

- SSBP-23-3
- SSBP-34-15
- SSBP-42-50



- ▶ Factory Assembled and Tested
- ▶ Clamp Collar Input
- ▶ 24 VDC
- ▶ Nema 23, 34 and 42



Dimensions

Model No.	Frame Size	Shaft & Hub Dia.	A	AH	AJ	AK	B	BB	BH	H	N	I	L	O	P
SSBP-23-3	23	1/4	2.25	0.70	2.625	1.500	1.18	0.10	2.13	(4X) .205	(4) #10-24-2B	16.75	1.865	#6-32	30°
SSBP-34-15	34	3/8	3.25	1.16	3.875	2.875	1.58	0.10	3.25	(4X) .222	(4) #10-24-2B	18.00	2.578	1/4-28	15°
SSBP-34-15	34	1/2	3.25	1.16	3.875	2.875	1.58	0.10	3.25	(4X) .222	(4) #10-24-2B	18.00	2.578	1/4-28	15°
SSBP-42-50	42	5/8	4.25	1.23	4.950	3.000	2.27	0.10	3.50	(4X) .320	(4) 1/4-20-2B	18.00	4.056	1/4-28	90°

Technical Data and Torque (In. Lb.)

Model No.	Wt. Lbs.	Static Torque In. Lbs.	Inertia Lb. In. ²	Voltage VDC	Amps	Ohms
SSBP-23-3	1.1	3	0.009	24	0.182	132
SSBP-34-15	2.9	15	0.112	24	0.369	65.1
SSBP-34-15	2.9	15	0.112	24	0.369	65.1
SSBP-42-50	6.0	50	0.206	24	0.717	35.5

	Model No.			
	SSBP-23-3	SSBP-34-15	SSBP-34-15	SSBP-42-50
Shaft Diameter	1/4	3/8	1/2	5/8
24 VDC	8923-2331	8934-2551	8934-2661	8942-2771

Sold & Serviced By:

Toll Free Phone (877) SERV098
 Toll Free Fax (877) SERV099
www.electromate.com
sales@electromate.com