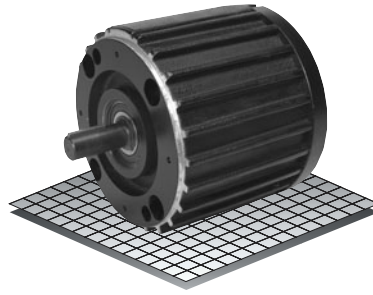


Clutch-Brake Modules

Enclosed Housing

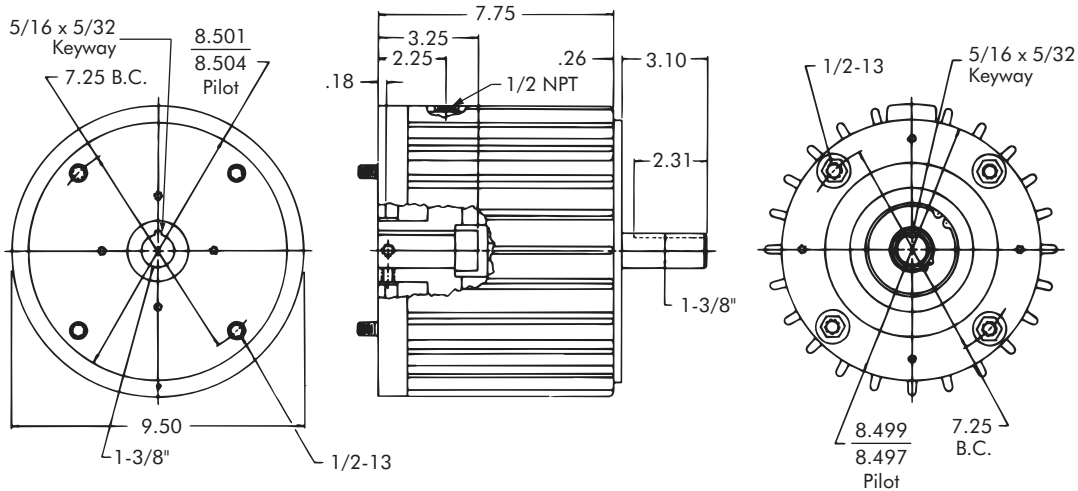
Model

● CBP-215-125-E



- ▶ Factory Assembled and Tested
- ▶ Spline Drive
- ▶ 213TC/215TC Flange

Clutch-Brake Module



Technical Data and Torque (In. Lb.)

| Model No. | Wt. Lbs. | Static Torque in. lb. | Max. Speed RPM | Coil Voltage vdc | * Rated Current amps | RPM | | | | | | | | | |
|---------------|----------|-----------------------|----------------|------------------|----------------------|------|------|------|------|------|------|------|------|------|------|
| | | | | | | 0 | 300 | 600 | 900 | 1200 | 1500 | 1800 | 2400 | 3000 | 3600 |
| CBP-215-125-E | 49 | 1500 | 3600 | 90 | .46 | 1500 | 1320 | 1140 | 1020 | 960 | 900 | 804 | 636 | 516 | 420 |

Refer to Section M for torque and heat dissipation curves.

* Rated Current for 90v

| | Model No. |
|----------|---------------|
| | CBP-215-125-E |
| 24 Volts | 307194-163 |
| 90 Volts | 307194-164 |

To order use number shown in table above:
example – for 90 volt CBP-215-125-E, order 307194-164.

For controls, see Section K.

Sold & Serviced By:



Toll Free Phone (877) SERV098

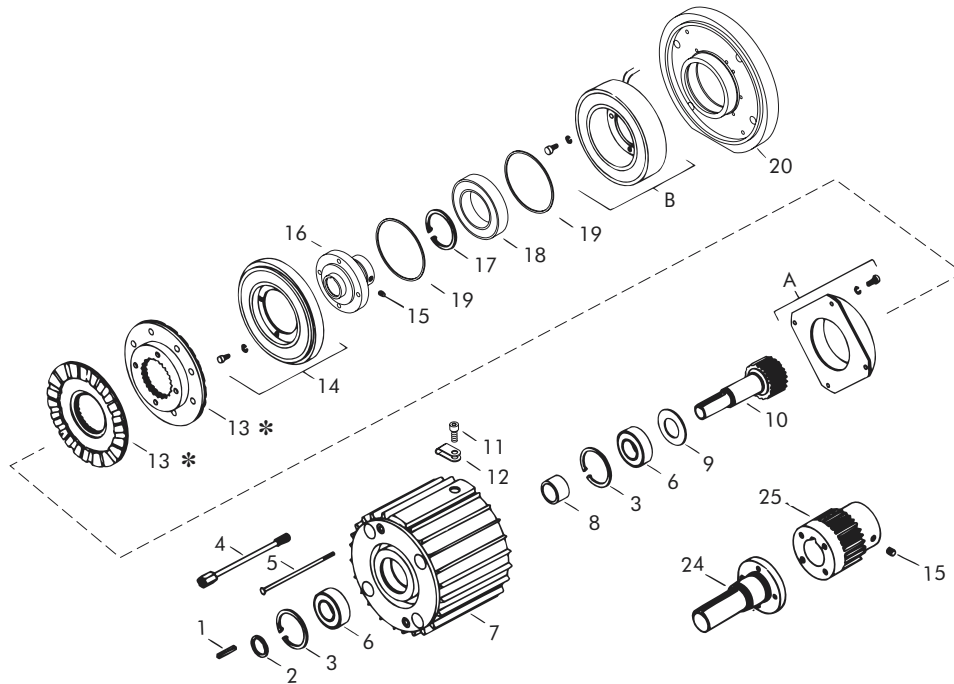
Toll Free Fax (877) SERV099

www.electromate.com

sales@electromate.com

Enclosed Housing

Clutch-Brake Modules – Replacement Parts



Replacement Parts

| Item | Qty. | Description | Model No. |
|------|------|----------------------------|---------------------|
| | | | Clutch-Brake Module |
| | | | CBP-215-125-E |
| 1 | 2 | Key | 326771 |
| 2 | 1 | Retaining Ring | RY-20191 |
| 3 | 1 | Retaining Ring | RY-20114 |
| 4 | 4 | Tie Bolt | 650378 |
| 5 | 2 | Assembly Screw | RY-20193 |
| 6 | 2 | Bearing | RY-20115 |
| 7 | 1 | Housing | 650377-1 |
| 8 | 1 | Bearing Spacer | 326699 |
| 9 | 1 | Washer | 326769-2 |
| 10 | 1 | Splined Shaft | 650340-21 |
| 11 | 1 | Cap Screw | DY-10278 |
| 12 | 1 | Wire Clip | 36-42-3 |
| 13 | 2 | Armature | 307382-1 |
| 14 | 1 | Rotor | 307820-11 |
| 15 | 2 | Setscrew | – |
| 16 | 1 | Rotor Hub | 307751-9 |
| 17 | 1 | Retaining Ring | 327064 |
| 18 | 1 | Bearing | RY-20210 |
| 19 | 2 | Retaining Ring | DY-15117 |
| 20 | 1 | End Cap | 650380-3 |
| 21 | 8 | Screw | DY-644 |
| 22 | 12 | Washer | DY-4498 |
| 23 | 6 | Screw (not shown) | – |
| 24 | 1 | Brake Shaft | – |
| 25 | 1 | Brake Hub | – |
| 26 | 1 | Retaining Ring (not shown) | – |
| A | 1 | Brake Field | |
| | | 24 Volts | 307353-4 |
| | | 90 Volts | 307354-4 |
| B | 1 | Clutch Field | |
| | | 24 Volts | 307713-5 |
| | | 90 Volts | 307714-5 |

* Current design armatures are solid.

Sold & Serviced By:

 **ELECTROMATE**

Toll Free Phone (877) SERV098

Toll Free Fax (877) SERV099

www.electromate.com

sales@electromate.com