

Selection

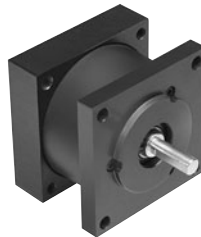
AC Motor Brakes/Bolt On Servo Brakes



Selection Chart – AC Motor Brakes

HP	RPM	Nema Frame	Rear Mounted	Coupler
1/4	1800 1200	48YC / 56C 48YC / 56C	SSMBP-56AC-3 SSMBP-56AC-3	SSBP-56AC-3 SSBP-56AC-3
1/3	3600 1800 1200	48YC / 56C 48YC / 56C 56C	SSMBP-56AC-3 SSMBP-56AC-3 SSMBP-56AC-3	SSBP-56AC-3 SSBP-56AC-3 SSBP-56AC-3
1/2	3600 1800 1200	56C 56C 56C	SSMBP-56AC-3 SSMBP-56AC-3 SSMBP-56AC-6	SSBP-56AC-3 SSBP-56AC-3 SSBP-56AC-6
3/4	3600 1800 1200 1200	56C 56C 56C 143TC	SSMBP-56AC-3 SSMBP-56AC-6 SSMBP-56AC-6 SSMBP-145AC-6	SSBP-56AC-3 SSBP-56AC-6 SSBP-56AC-6 SSBP-145AC-6
1	3600 1800 1800 1200 1200	56C 56C 143TC 56C 145TC	SSMBP-56AC-3 SSMBP-56AC-6 SSMBP-145AC-6 — SSMBP-145AC-10	SSBP-56AC-3 SSBP-56AC-6 SSBP-145AC-6 SSBP-56AC-10 SSBP-145AC-10
1-1/2	3600 3600 1800 1800 1200	56C 143TC 56C 145TC / 184C 145TC / 184C	SSMBP-56AC-6 SSMBP-145AC-6 — SSMBP-145AC-10 SSMBP-145AC-10	SSBP-56AC-6 SSBP-145AC-6 SSBP-56AC-10 SSBP-145AC-10 SSBP-145AC-10
2	3600 3600 1800 1800	56C 143TC 56C 145TC / 184C	SSMBP-56AC-6 SSMBP-145AC-6 — SSMBP-145AC-10	SSBP-56AC-6 SSBP-145AC-6 SSBP-56AC-10 SSBP-145AC-10

Selection chart uses a 1.4 service factor



Selection Chart – Bolt On Servo Brakes

Holding Torque	Nema Frame	Shaft Dia.	Model No.
3 In. Lbs.	23	1/4	SSBP-23-3
15 In. Lbs. 15 In. Lbs.	34 34	3/8 1/2	SSBP-34-15 SSBP-34-15
50 In. Lbs.	42	5/8	SSBP-42-50