

# THE WORLD'S SMALLEST HARMONIC DRIVE GEARHEAD

## HARMONIC DRIVE GEARHEAD CSF-3-2XH

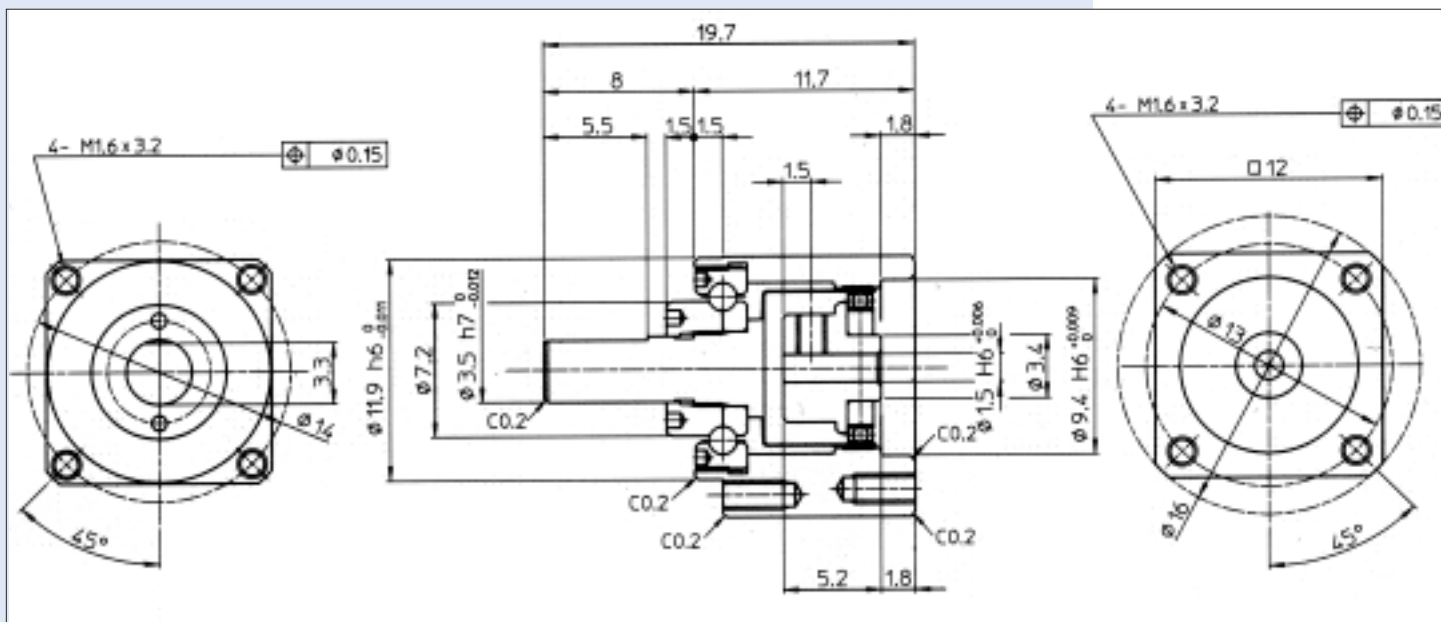
The World's smallest size Harmonic Drive Gearhead has been developed. The CSF-3 uses HD Systems' patented design and manufacturing expertise. Ultra Precision Gear-cutting Technology has created the World's smallest tooth Module:0.042mm.



### FEATURES

- OUTSIDE DIMENSION: 12 MM
- ZERO-BACKLASH
- COMPACT 4-POINT CONTACT BALL BEARING MOUNTED ON MAIN SHAFT

GEAR RATIO	RATED TORQUE		REPEATED PEAK TORQUE		MAX.MOMENTARY TORQUE	
	N.m	In.lb	N.m	In.lb	N.m	In.lb
30	0.06	0.53	0.13	1.15	0.22	1.95
50	0.10	0.89	0.21	1.86	0.41	3.63
80	0.13	1.15	0.26	2.30	0.48	4.25
100	0.15	1.33	0.30	2.66	0.57	5.04



Sold & Serviced By:  
 **ELECTROMATE**

Toll Free Phone (877) SERV098  
 Toll Free Fax (877) SERV099  
[www.electromate.com](http://www.electromate.com)  
[sales@electromate.com](mailto:sales@electromate.com)