

# WHY GROSCHOPP?

WE DESIGN AND BUILD OUR MOTORS IN THE UNITED STATES

48 HOUR TURNAROUND ON A SAMPLE MOTOR

DIRECT ACCESS TO OUR ENGINEERS

CUSTOM AND STANDARD MOTORS TO FIT YOUR APPLICATION



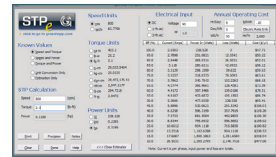
## POWERFUL ONLINE TOOLS AND RESOURCES

Available on our website: [www.groschopp.com](http://www.groschopp.com)

### MOTOR SEARCH TOOL



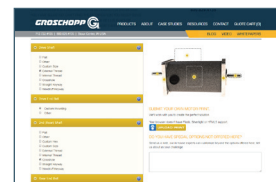
### STPE CALCULATOR: SPEED, TORQUE AND POWER



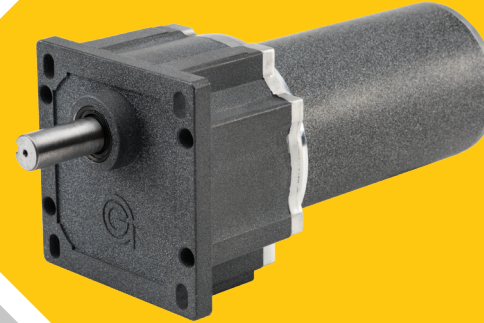
### DATA SHEETS AND OUTLINE DRAWINGS



### ONLINE CUSTOMIZATIONS



### VIDEOS, WHITEPAPERS & BLOGS



**GROSCHOPP**<sup>®</sup>  
product line



Sold & Serviced By:

 **ELECTROMATE**

Toll Free Phone (877) SERV098  
[www.electromate.com](http://www.electromate.com)  
[sales@electromate.com](mailto:sales@electromate.com)



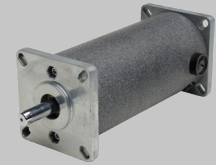
**FRACTIONAL HORSEPOWER**  
motors | gearmotors | controls

 **48 HOUR**  
turn around



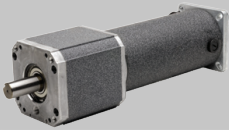
# GROSCHOPP PRODUCT LINE

## DC MOTORS & GEARMOTORS



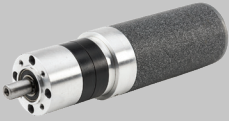
### DC Motors

- 12 - 180 VDC and 115/230 FWR
- 350 - 6,000 RPM
- .70 - 13 in-lbs rated torque
- 0.07 - 0.50 HP



### DC Planetary Gearmotors

- 12 - 180 VDC and 115/230 FWR
- Up to 700 in-lbs rated torque
- 0.02 - 0.38 HP
- 5:1 - 1,000:1 standard ratios



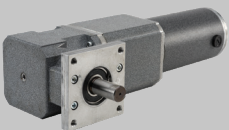
### DC i-Series Planetary Gearmotors

- 12 - 180 VDC and 115/230 FWR
- Up to 1,062 in-lbs rated torque
- 0.01 - 0.5 HP
- 5:1 - 308:1 standard ratios
- Selected ratios available with plastic housing and gears



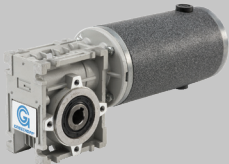
### DC Parallel Shaft Gearmotors

- 12 - 180 VDC and 115/230 FWR
- Up to 322 in-lbs rated torque
- 0.02 - 0.38 HP
- 5:1 - 320:1 standard ratios



### DC Right Angle Planetary Gearmotors

- 12 - 180 VDC and 115/230 FWR
- Up to 650 in-lbs rated torque
- 0.02 - 0.38 HP
- 5:1 - 1,000:1 standard ratios



### DC Right Angle Gearmotors

- 12 - 180 VDC and 115/230 FWR
- Up to 375 in-lbs rated torque
- 0.02 - 0.38 HP
- 5:1 - 100:1 standard ratios



### 4-Pole DC Motor - PM8058

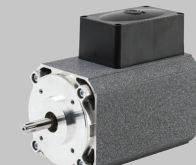
- 12 VDC
- 5089.0 RPM
- Up to 26.81 in-lbs rated torque
- 0.20 HP



### DC Armature/Magnet Sets

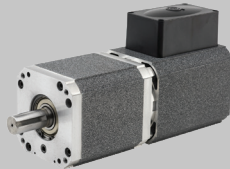
- 12 - 180 VDC and 115/230 FWR
- 275 - 6,000 RPM
- Meets or exceeds UL guidelines

## AC MOTORS & GEARMOTORS



### AC Motors

- 115V or 230V
- 50Hz / 60Hz
- 1,200-3,400 RPM
- 2 pole or 4 pole design
- 1.6 - 26 in-lbs rated torque
- 0.05 - 1 HP
- Single or three phase



### AC Planetary Gearmotors

- 115V or 230V
- Up to 800 in-lbs rated torque
- 0.05 - 1 HP
- NEMA 34 mounting configuration
- 5:1 - 1,000:1 standard ratios



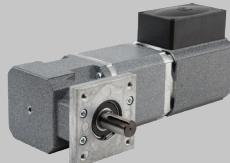
### AC i-Series Planetary Gearmotors

- 115V or 230V
- Up to 1,062 in-lbs rated torque
- 0.05 - 0.75 HP
- 5:1 - 308:1 standard ratios
- Selected ratios available with plastic housing and gears



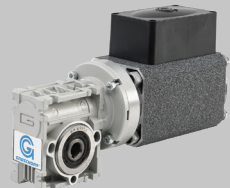
### AC Parallel Shaft Gearmotors

- 115V or 230V
- Up to 322 in-lbs rated torque
- 0.05 - 0.75 HP
- 5:1 - 320:1 standard ratios



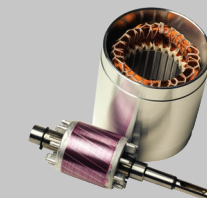
### AC Right Angle Planetary Gearmotors

- 115V or 230V
- Up to 750 in-lbs rated torque
- 0.05 - 0.75 HP
- 5:1 - 1,000:1 standard ratios



### AC Right Angle Gearmotors

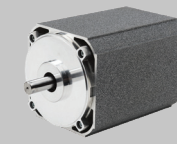
- 115V or 230V
- Up to 442 in-lbs rated torque
- 0.05 - 0.75 HP
- 5:1 - 100:1 standard ratios



### AC Stator/Rotor Sets

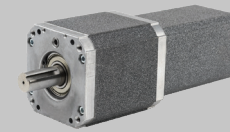
- 115V or 230V
- 50/60 Hz
- 1,400 - 3,400 RPM
- 2 pole or 4 pole
- Meets or exceeds UL guidelines

## BRUSHLESS MOTORS & GEARMOTORS



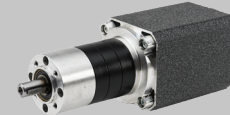
### Brushless DC Motors

- Frame sizes 65 and 80 available
- 115 VAC/12 - 163 VDC Bus
- 2,300-3,000 RPM
- 1.8 - 10.8 in-lbs rated torque
- 0.10 - 0.50 HP



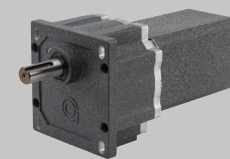
### Brushless DC Planetary Gearmotors

- 115 VAC/12 - 163 VDC Bus
- Up to 700 in-lbs rated torque
- 0.03 - 0.38 HP
- 5:1 - 1,000:1 standard ratios



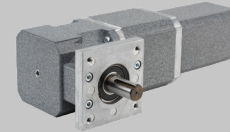
### Brushless DC i-Series Planetary Gearmotors

- 115 VAC/12 - 163 VDC Bus
- Up to 1,062 in-lbs rated torque
- 0.04 - 0.33 HP
- 5:1 - 308:1 standard ratios
- Selected ratios available with plastic housing and gears



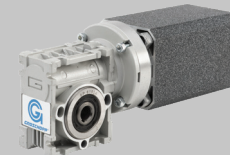
### Brushless DC Parallel Shaft Gearmotors

- 115 VAC/12 - 163 VDC Bus
- Up to 322 in-lbs rated torque
- 0.04 - 0.38 HP
- 5:1 - 320:1 standard ratios



### Brushless DC Right Angle Planetary Gearmotors

- 115 VAC/12 - 163 VDC Bus
- Up to 650 in-lbs rated torque
- 0.03 - 0.38 HP
- 5:1 - 1,000:1 standard ratios



### Brushless DC Right Angle Gearmotors

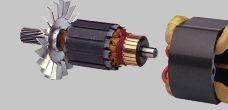
- 115 VAC/12 - 163 VDC Bus
- Up to 255 in-lbs rated torque
- 0.03 - 0.38 HP
- 5:1 - 100:1 standard ratios

## UNIVERSAL MOTORS



### Universal Skeleton Motor

- 12 - 250 AC/DC voltage
- 0.25 - 2.50 HP
- 8,000-20,000 RPM
- 2 pole design
- Meets or exceeds UL guidelines
- Only available in large quantities



### Universal Parts Sets

- 12 - 250 VAC/VDC voltage
- 0.25 - 2.50 HP
- Up to 20,000 RPM
- 2 pole design
- Meets or exceeds UL guidelines

## GEARBOXES/SPEED REDUCERS



### Stand-Alone Right Angle Planetary Gearmotors

- 5:1 - 1,000:1
- Up to 840 in-lb rated torque
- Mounting options for NEMA 23 or NEMA 34 motors



### Stand-Alone Planetary Gearmotors

- 5:1 - 1,000:1
- Up to 900 in-lb rated torque
- Mounting options for NEMA 23 or NEMA 34 motors

## CONTROLS



### AC Controls

- 115 or 208/230 VAC input
- 0.1-1.0 max hp
- 4.0-14.4 amps max current
- Forward/reverse direction



### BLDC Controls

- 12-48 VDC
- 11.3-40 amps max current
- 60:1 speed range
- Forward/reverse direction



### DC Controls

- 120/240 VAC input
- 25:1 speed range
- 40-120% of base max speed