

eXware707Q Tech-Note

eXware707Q is a rugged and compact device designed as a powerful IoT Controller. The product can integrate JMobile HMI with its HTML interface and powerful gateway functions, IEC 61131 PLC with networked I/O, Corvina Cloud secure remote connection. It is the ideal device for building data-intensive cloud edge solutions for IoT thanks to its quad core ARM CPU.



- JMobile runtime with HTML5 JM4web HMI
- JMobile data gateway functions including OPC UA server/client and all JMobile protocols available
- Secure routing with Corvina Cloud
- Supports CODESYS PLC and network stacks
- Quad core ARM CPU
- 3 Ethernet ports for network separation WAN/LAN
- Rugged all metal design
- Wide operating temperature range

Highlights

With the combination of JMobile HMI, Corvina Cloud security and CODESYS PLC, eXware offers companies the chance to start at an uncomplicated level in IoT and yet allows enormous future expansion into more complex aspects of Industry 4.0. Speaking across the vast library of JMobile protocols as well as OPC UA to higher enterprise level control, the eXware is a true Plug and Use product.

- Compatible with existing installations including legacy equipment
- Compatible with CODESYS V3. Supports network stacks (EtherCAT, PROFINET, EtherNet/IP, POWERLINK) and offers local I/O expandability
- Communication security based on HTTPS and TLS
- Straightforward wireless connectivity using the optional PLCM09 plug-in modem
- Plug-in modules for system expansion
- System settings by web browser
- Can be used as a Linux-based open platform
- Ready for OPC UA pub/sub over TSN
- Ready for Corvina Cloud 2.0

Sold & Serviced By:



Toll Free Phone (877) SERV098

Toll Free Fax (877) SERV099

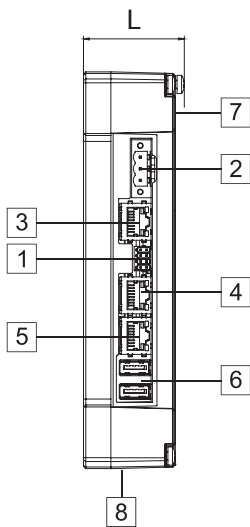
www.electromate.com

sales@electromate.com

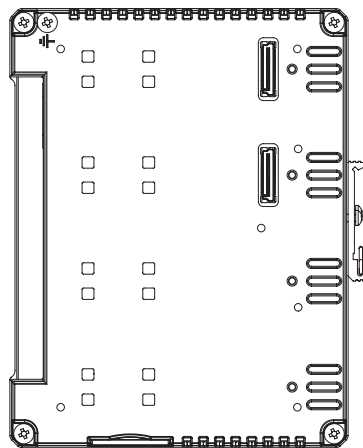
eXware707Q -Technical Data



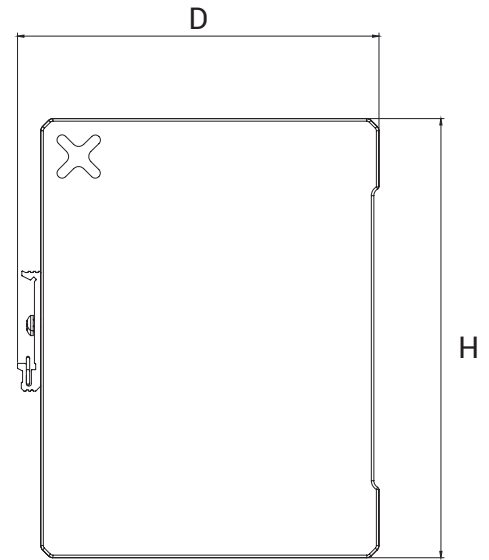
System Resources	
CPU	ARM Cortex-A9 800 MHz quad core
Operating System	Linux RT
Flash	8 GB
RAM	2 GB
Real Time Clock, RTC Back-up, Buzzer	Yes
Interface	
Ethernet port	3 (port 0 - 10/100/1000, port 1 - 10/100, port 2 - 10/100)
USB port	2 (Host v. 2.0, max. 500 mA)
Serial port	1 (RS-232, RS-485, RS-422, software configurable) Max 3 serial ports using plug-in modules.
SD card	Yes
Expansion	2 slots for plug-in modules
Ratings	
Power supply	24 Vdc (10 to 32 Vdc)
Current Consumption	0.55 A max. at 24 Vdc
Input Protection	Electronic
Battery	Yes
Environment Conditions	
Operating Temp	-20°C to +60°C Plug-in modules and USB devices may limit max temperature to +50 °C.
Storage Temp	-20°C to +70°C
Operating / Storage Humidity	5 - 85% RH, non condensing
Protection Class	IP20
Dimensions and Weights	
Faceplate LxH	44 x 174 mm
Depth D	144 mm
Weight	0.7 Kg
Mounting	DIN Rail (TS35)
Approvals	
CE	Emission EN 61000-6-4 Immunity EN 61000-6-2 for installation in industrial environments Emission EN 61000-6-3, Immunity EN 61000-6-1 for installation in residential environments EN 60945, EMC Emissions and Immunity for marine applications
UL	cULus: UL61010-1 / UL61010-2-201
UL	cULus: Class 1 Div 2
IECEX	Zone 2: Ex nA IIC T5 Gc / -20°C ≤ Tamb ≤ +60°C. Limited to 0°C ≤ Tamb ≤ +50°C with PLIO03
ATEX	Zone 2: II 3 G Ex nA IIC T5 Gc / -20°C ≤ Tamb ≤ +60°C. Limited to 0°C ≤ Tamb ≤ +50°C with PLIO03
DNV-GL	Yes
RCM	Yes



- 1 Serial port
- 2 Power supply
- 3 Ethernet port 0 (10/100/1000 Mb)



- 4 Ethernet port 1 (10/100 Mb)
- 5 Ethernet port 2 (10/100 Mb)
- 6 USB ports 1 and 2



- 7 Expansion slots for plug-in modules
- 8 SD Card slot

Ordering Information

Model	Part Number	Description
eXware707Q	+EXW707QU0P1	High performance IoT controller and gateway, quad core CPU, 3 Ethernet ports, 1 serial port, 2 USB ports