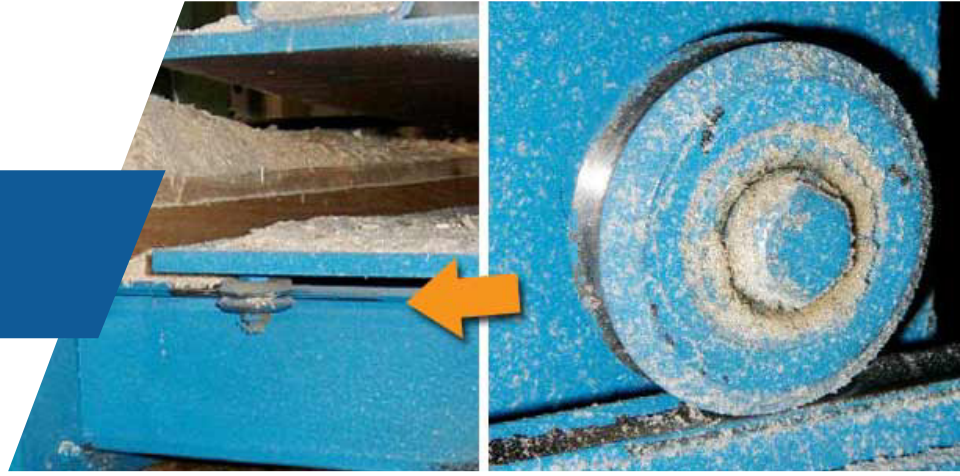


LUMBER INDUSTRY

Application Profile

And You Think Your Operating Conditions Are Dusty?



Challenge

A multiple axis guidance system is exposed to a constant avalanche of wood chips and sawdust from the machine operation. The equipment is a new design concept and is part of an effort to automate a difficult and time consuming set-up process.

Application Description

KSM (Mifflintown, PA) developed and designed a woodworking machine that automatically mills “notches” into heavy logs that are designed for use in prefabricated log homes. The machine operates almost constantly for 8-10 hours per day, 5 days per week.

Solution

DualVee® and HepcoMotion assemblies eliminate the necessity to protect the linear guidance system from the hostile operating environment. Bishop-Wisecarver components installed in early 2003 are still operating without apparent wear and without any lubrication on the track surfaces.

Products Used

Dual Vee®

- Size 3 Guide Wheels
- Size 3 Drilled Tracks
- Size 3 Bushings

HepcoMotion®

- Narrow Track Roller Bearing Assembly



BISHOPWISECARVER^{GROUP}
A FAMILY OF SOLUTIONS



Sold & Serviced By:

 **ELECTROMATE**

Toll Free Phone (877) SERV098
www.electromate.com
sales@electromate.com