

Sold & Serviced By:



**parvalux**  
by **maxon**

Toll Free Phone (877) SERV098

Toll Free Fax (877) SERV099

[www.electromate.com](http://www.electromate.com)

[sales@electromate.com](mailto:sales@electromate.com)

## Mobility solutions





## Powered wheelchairs

From lightweight paediatric to rugged off-road all-terrain chairs, our huge range of wheelchair drive solutions provides the smooth, safe power needed for almost any situation. Parvalux offers an extensive range of electric wheelchair solutions that provide accurate manoeuvrability and high efficiency, giving millions of people the freedom to live life on their own terms.

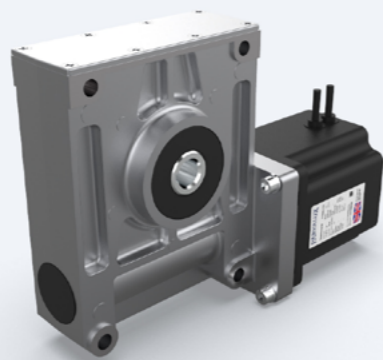


| GB12                   |                           |           |
|------------------------|---------------------------|-----------|
| 1 Gear ratio           | :1                        | 12.5 - 25 |
| 2 Continuous torque    | <b>Nm</b>                 | Up to 20  |
| 3 Intermittent torque  | <b>Nm</b>                 | Up to 32  |
| 4 Gearbox efficiency   | %                         | Up to 85  |
| 5 Gear material        | High efficiency composite |           |
| 6 Voltage              | <b>V</b>                  | 12 - 48   |
| 7 Speed                | <b>rpm</b>                | 120 - 320 |
| 8 Recommended motor(s) | BRx70 / PBL70             |           |



| PGS90                  |                           |           |
|------------------------|---------------------------|-----------|
| 1 Gear ratio           | :1                        | 19        |
| 2 Continuous torque    | <b>Nm</b>                 | Up to 100 |
| 3 Intermittent torque  | <b>Nm</b>                 | Up to 150 |
| 4 Gearbox efficiency   | %                         | Up to 81  |
| 5 Gear material        | High efficiency composite |           |
| 6 Voltage              | <b>V</b>                  | 12 - 48   |
| 7 Speed                | <b>rpm</b>                | 210       |
| 8 Recommended motor(s) | PBL86                     |           |

## Featured product **PBL86-GB9**



| Technical data                       |                        |       |                            |            |     |
|--------------------------------------|------------------------|-------|----------------------------|------------|-----|
| 1 Total weight capacity <sup>1</sup> | <b>Kg</b>              | 365   | 7 System peak efficiency   | %          | 77  |
| 2 Available speed                    | <b>mph</b>             | 4 - 8 | 8 Max rated power          | <b>W</b>   | 700 |
| 3 Motor type                         | BLDC                   |       | 9 Motor class              | F          |     |
| 4 Motor peak efficiency              | %                      | 85    | 10 IP rating               | Up to IP56 |     |
| 5 Gearbox type                       | Right-angle worm wheel |       | 11 Electromechanical brake | Yes        |     |
| 6 Gearbox peak efficiency            | %                      | 90    | 12 Noise                   | <b>dB</b>  | 55  |

<sup>1</sup> Chair and user

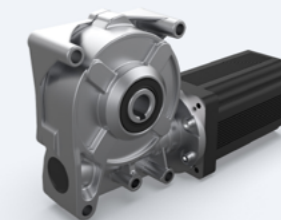


## Patient hoists

Parvalux patient hoist motors are suitable for all types and weights of patients, from paediatric to bariatric (>250kg). Our extensive experience in selecting the right combination of torque, power and speed allows our motors to deliver the smooth and quiet operation that makes us the first-choice supplier for a wide range of patient hoist and winch manufacturers.



| GB28                   |            |          |
|------------------------|------------|----------|
| 1 Gear ratio           | :1         | 15 - 60  |
| 2 Continuous torque    | <b>Nm</b>  | Up to 5  |
| 3 Intermittent torque  | <b>Nm</b>  | Up to 8  |
| 4 Gearbox efficiency   | %          | Up to 75 |
| 5 Gear material        | Bronze     |          |
| 6 Voltage              | <b>V</b>   | 12 - 220 |
| 7 Speed                | <b>rpm</b> | 50 - 200 |
| 8 Recommended motor(s) | PM11       |          |



| GB12                   |                    |           |
|------------------------|--------------------|-----------|
| 1 Gear ratio           | :1                 | 12.5 - 75 |
| 2 Continuous torque    | <b>Nm</b>          | Up to 30  |
| 3 Intermittent torque  | <b>Nm</b>          | Up to 48  |
| 4 Gearbox efficiency   | %                  | Up to 85  |
| 5 Gear material        | Bronze / composite |           |
| 6 Voltage              | <b>V</b>           | 12 - 48   |
| 7 Speed                | <b>rpm</b>         | 53 - 320  |
| 8 Recommended motor(s) | PBL70              |           |

## Featured product **PM11-GB28**



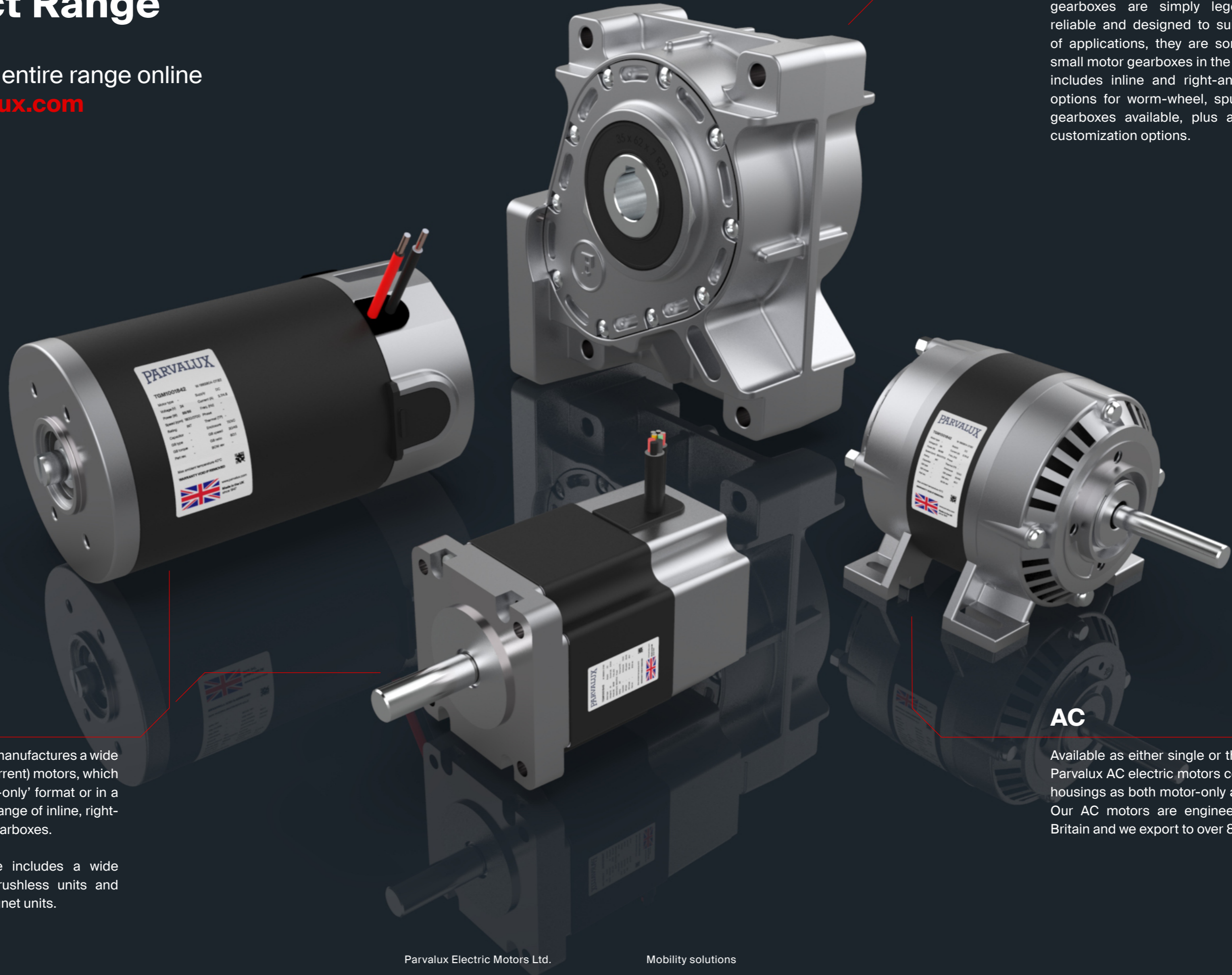
| Technical data          |             |     |                           |                        |    |
|-------------------------|-------------|-----|---------------------------|------------------------|----|
| 1 Drive pinion diameter | <b>mm</b>   | 75  | 6 Motor type              | PMDC                   |    |
| 2 Lifting speed         | <b>cm/s</b> | 3.5 | 7 Motor peak efficiency   | %                      | 82 |
| 3 Lifting weight        | <b>Kg</b>   | 284 | 8 Gearbox type            | Right-angle worm wheel |    |
| 4 Speed at output shaft | <b>rpm</b>  | 58  | 9 Gearbox peak efficiency | %                      | 75 |
| 5 Load at output shaft  | <b>Nm</b>   | 19  | 10 System efficiency      | %                      | 62 |

# Parvalux Product Range

Discover the entire range online  
[www.parvalux.com](http://www.parvalux.com)

## Gearboxes

Parvalux British-made electric motor gearboxes are simply legendary; rugged, reliable and designed to suit a wide choice of applications, they are some of the finest small motor gearboxes in the world. Our range includes inline and right-angle output, with options for worm-wheel, spur and planetary gearboxes available, plus a wide range of customization options.



## DC

Parvalux designs and manufactures a wide range of DC (Direct Current) motors, which are available in 'motor-only' format or in a combination with our range of inline, right-angle and planetary gearboxes.

Our DC motor range includes a wide selection of BLDC brushless units and PMDC permanent magnet units.

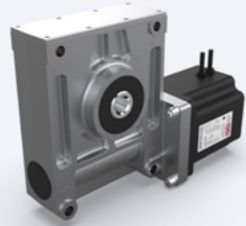
## AC

Available as either single or three phase units, Parvalux AC electric motors come in aluminum housings as both motor-only and geared units. Our AC motors are engineered and built in Britain and we export to over 80 countries.



## Stairlifts

Parvalux has been working with the leading stairlift manufacturers for many years. We understand the complex operational and safety demands that both manufacturers and their end customers require. Our geared stairlift motor combinations are suitable for all types of stairlift, straight or curved, and can provide motors for both the main drive and seat levelling requirements of your stairlift.



| GB9                    |            |                    |
|------------------------|------------|--------------------|
| 1 Gear ratio           | :1         | 12.5 - 75          |
| 2 Continuous torque    | <b>Nm</b>  | Up to 50           |
| 3 Intermittent torque  | <b>Nm</b>  | Up to 120          |
| 4 Gearbox efficiency   | %          | Up to 90           |
| 5 Gear material        |            | Bronze / composite |
| 6 Voltage              | <b>V</b>   | 12 - 220           |
| 7 Speed                | <b>rpm</b> | 40 - 320           |
| 8 Recommended motor(s) |            | BRx90 / PBL86      |



| GB65                   |            |                |
|------------------------|------------|----------------|
| 1 Gear ratio           | :1         | 60 - 160       |
| 2 Continuous torque    | <b>Nm</b>  | Up to 120      |
| 3 Intermittent torque  | <b>Nm</b>  | Up to 300      |
| 4 Gearbox efficiency   | %          | Up to 75       |
| 5 Gear material        |            | Steel / bronze |
| 6 Voltage              | <b>V</b>   | 12 - 220       |
| 7 Speed                | <b>rpm</b> | 19 - 67        |
| 8 Recommended motor(s) |            | BRx90 / PBL86  |

## Featured product **BRx90-GB65**



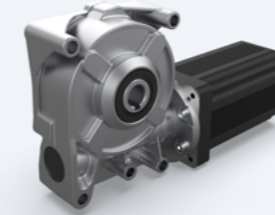
| Technical data                       |             |     |                            |                        |
|--------------------------------------|-------------|-----|----------------------------|------------------------|
| 1 Drive pinion diameter              | <b>mm</b>   | 120 | 7 Motor type               | PMDC                   |
| 2 Angle of stairs                    | °           | 50  | 8 Motor peak efficiency    | %                      |
| 3 Carriage speed                     | <b>cm/s</b> | 11  | 9 Gearbox type             | Right-angle worm wheel |
| 4 Total carriage weight <sup>1</sup> | <b>Kg</b>   | 227 | 10 Gearbox peak efficiency | %                      |
| 5 Speed at output shaft              | <b>rpm</b>  | 18  | 11 System efficiency       | %                      |
| 6 Load at output shaft               | <b>Nm</b>   | 114 |                            |                        |

<sup>1</sup> Including user



## Step actuators

Motorised electronic side steps make a huge difference to the passenger experience on any journey. They need to be simple to operate and totally reliable, every time they're used. Parvalux geared motors are specified by the leading step actuator manufacturers to power units on a range of different vehicles.



| GB12                   |           |               |
|------------------------|-----------|---------------|
| 1 Gear ratio           | :1        | 12.5 - 25     |
| 2 Continuous torque    | <b>Nm</b> | Up to 20      |
| 3 Intermittent torque  | <b>Nm</b> | Up to 32      |
| 4 Gearbox efficiency   | %         | Up to 85      |
| 5 Recommended motor(s) |           | BRx70 / PBL70 |

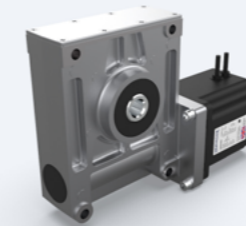


| GB66                   |           |               |
|------------------------|-----------|---------------|
| 1 Gear ratio           | :1        | 12 - 219      |
| 2 Continuous torque    | <b>Nm</b> | Up to 15      |
| 3 Intermittent torque  | <b>Nm</b> | Up to 30      |
| 4 Gearbox efficiency   | %         | Up to 75      |
| 5 Recommended motor(s) |           | BRx42 / PBL42 |



## Lifts, VPLs and ramps

Whether it's for access to a building or vehicle, Parvalux geared motors are hugely popular with manufacturers of wheelchair lifts and ramps. Compact, reliable, and quiet, our drives can be specified to meet a wide range of requirements for lifts and ramps of all shapes and sizes, with our ability to offer fully custom units ensuring you get the perfect solution every time.



| GB9                    |           |               |
|------------------------|-----------|---------------|
| 1 Gear ratio           | :1        | 12.5 - 75     |
| 2 Continuous torque    | <b>Nm</b> | Up to 50      |
| 3 Intermittent torque  | <b>Nm</b> | Up to 120     |
| 4 Gearbox efficiency   | %         | Up to 90      |
| 5 Recommended motor(s) |           | BRx90 / PBL86 |



| GB65                   |           |               |
|------------------------|-----------|---------------|
| 1 Gear ratio           | :1        | 60 - 160      |
| 2 Continuous torque    | <b>Nm</b> | Up to 120     |
| 3 Intermittent torque  | <b>Nm</b> | Up to 300     |
| 4 Gearbox efficiency   | %         | Up to 75      |
| 5 Recommended motor(s) |           | BRx90 / PBL86 |



## Mobility solutions

It's a fact of life that advances in healthcare mean people are now living longer and as we age, we become more reliant on mobility products to support independent living. Our ability to travel, go shopping, take outdoor recreation and even play sports can be extended with the help of a range of mobility solutions.

Parvalux has demonstrable experience providing reliable and robust drive systems for a range of mobility products, from electric wheelchairs and mobility scooters to personnel lifts and patient hoists. Manufacturers benefit from our ability to customise our geared motor products to meet their specific need and our willingness to develop fully custom solutions, where required.

Parvalux geared motor products are valued by mobility product manufacturers and their customers in over 80 countries for their reliability and durability. Our AC, brushed and brushless DC motors and our legendary gearboxes, are available, right now.

Sold & Serviced By:



Toll Free Phone (877) SERV098

Toll Free Fax (877) SERV099

[www.electromate.com](http://www.electromate.com)

[sales@electromate.com](mailto:sales@electromate.com)

