

Sold & Serviced By:



**parvalux**  
by **maxon**

Toll Free Phone (877) SERV098

Toll Free Fax (877) SERV099

[www.electromate.com](http://www.electromate.com)

[sales@electromate.com](mailto:sales@electromate.com)

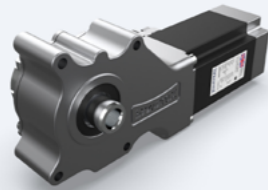
## Materials handling solutions



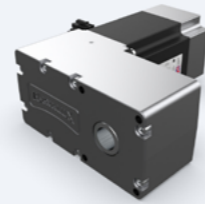


## Storage & retrieval systems

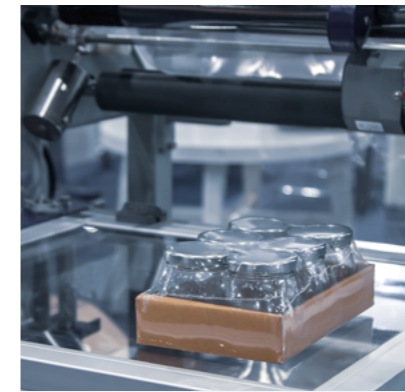
Up, down and across; storage retrieval systems operate between shelving units in factories and warehouses to automatically 'pick' stock from various locations. This is achieved via bar codes placed on the packaging. Our motors power the movement of these systems along the rails between the rows of shelves.



BLx60-GB60		
1 Voltage	V	48
2 Output speed	rpm	340
3 Power	W	313.9
4 Continuous torque	Nm	7.0
5 Intermittent torque	Nm	12.0

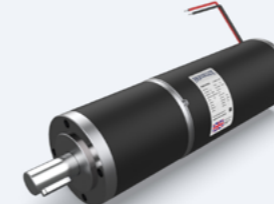


BLx70-GB59		
1 Voltage	V	48
2 Output speed	rpm	500
3 Power	W	393.0
4 Continuous torque	Nm	7.0
5 Intermittent torque	Nm	12.0

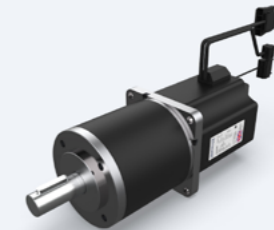


## Automated shrink wrapping

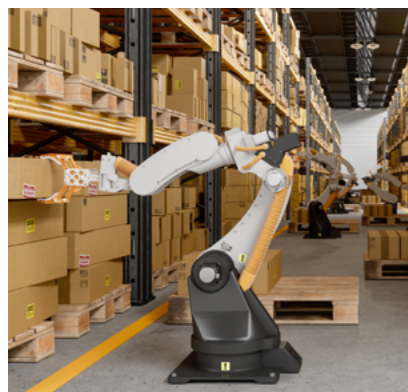
Shrink wrapping is used on thousands of consumable products found in supermarkets all over the world. The high quantity of products packaged in this way means the machines that perform this vital task need to run almost continuously, a feature which makes Parvalux units so perfect for this application.



BRx63-PGS62		
1 Voltage	V	12 - 48
2 Output speed	rpm	20 - 1000
3 Power	W	85.0
4 Continuous torque	Nm	0.7 - 26.7
5 Intermittent torque	Nm	1.2 - 44.6



PBL86-PGS90		
1 Voltage	V	48
2 Output speed	rpm	8 - 211
3 Power	W	586.1
4 Continuous torque	Nm	30.0 - 150.0
5 Intermittent torque	Nm	38.0 - 225.0



## Automated guided vehicles

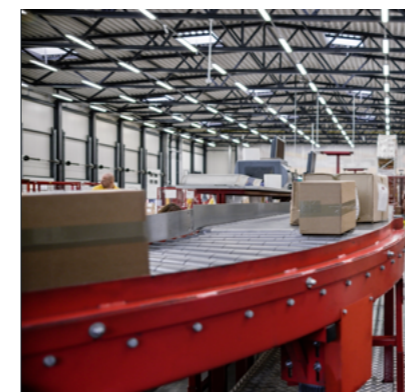
Parvalux geared motors provide reliable power to automated guided vehicles (AGVs), enabling them to transport materials of all shapes and sizes around factories and warehouses. Guided by tape, wire or sensors, the geared motors we provide need to be smart enough to react instantaneously to system control instructions.



BLx60-GB12		
1 Voltage	V	12 - 48
2 Output speed	rpm	40 - 240
3 Power	W	110.4
4 Continuous torque	Nm	3.7 - 13.1
5 Intermittent torque	Nm	6.4 - 22.5

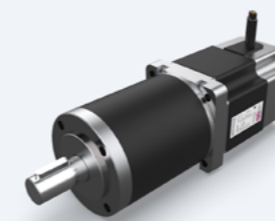


maxon Wheel Drives		
maxon wheel drives are designed for autonomous mobile robots (AMR) or other self-driving systems such as Automated Guided Vehicles (AGVs), LGVs, etc. Such systems are typically used in logistic applications, agriculture and other field / service robots. Technical details available on request.		



## Conveyors

Production downtime caused by faulty conveyor motors leads to financial loss, therefore your choice of drive system is important. Parvalux designs and manufactures both AC and DC geared motors with industry-leading reliability and durability, perfect for conveyor systems that work continuously, sometimes for decades at a time.



BLx60-PGS62		
1 Voltage	V	12 - 48
2 Output speed	rpm	20 - 1000
3 Power	W	110.4
4 Continuous torque	Nm	0.9 - 35.0
5 Intermittent torque	Nm	1.6 - 59.4



PBL86		
1 Voltage	V	48
2 Output speed	rpm	4000
3 Power	W	753.9
4 Continuous torque	Nm	1.8
5 Intermittent torque	Nm	3.1

# Parvalux Product Range

Discover the entire range online  
[www.parvalux.com](http://www.parvalux.com)

## Gearboxes

Parvalux British-made electric motor gearboxes are simply legendary; rugged, reliable and designed to suit a wide choice of applications, they are some of the finest small motor gearboxes in the world. Our range includes inline and right-angle output, with options for worm-wheel, spur and planetary gearboxes available, plus a wide range of customization options.

## DC

Parvalux designs and manufactures a wide range of DC (Direct Current) motors, which are available in 'motor-only' format or in a combination with our range of inline, right-angle and planetary gearboxes.

Our DC motor range includes a wide selection of BLDC brushless units and PMDC permanent magnet units.

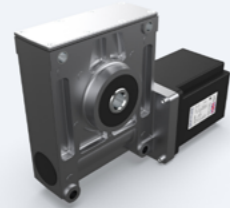
## AC

Available as either single or three phase units, Parvalux AC electric motors come in aluminum housings as both motor-only and geared units. Our AC motors are engineered and built in Britain and we export to over 80 countries.

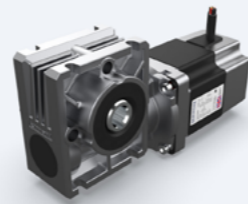


## Pallet and tray shuttles

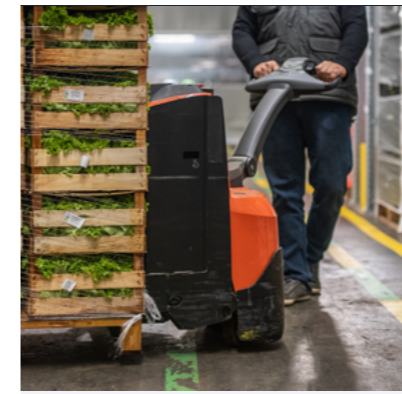
Ideal for companies that store large quantities of pallets and trays, automated shuttles are driven by electric motors along rails inside warehouses. This removes the need for forklifts to drive up and down lanes, increases storage capacity and creates a more modern and flexible automated warehouse operation.



PBL86-GB9		
1 Voltage	<b>V</b>	48
2 Output speed	<b>rpm</b>	67 - 267
3 Power	<b>W</b>	753.9
4 Continuous torque	<b>Nm</b>	22.0 - 60.0
5 Intermittent torque	<b>Nm</b>	38.0 - 90.0

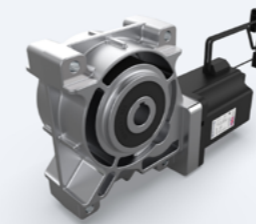


BLx60-GB28		
1 Voltage	<b>V</b>	12 - 48
2 Output speed	<b>rpm</b>	50 - 200
3 Power	<b>W</b>	110.4
4 Continuous torque	<b>Nm</b>	3.9 - 11.0
5 Intermittent torque	<b>Nm</b>	6.8 - 22.0

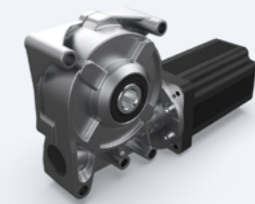


## Warehouse tugs

Tow tugs are used to transport materials and goods throughout warehouses and factories. The use of Parvalux geared motor drive systems ensures reliability and high-performance. Tow tugs reduce the need for any heavy lifting, reducing the risk of injury and improving productivity.



PBL86-GB65		
1 Voltage	<b>V</b>	48
2 Output speed	<b>rpm</b>	33
3 Power	<b>W</b>	753.9
4 Continuous torque	<b>Nm</b>	120.0
5 Intermittent torque	<b>Nm</b>	200.0

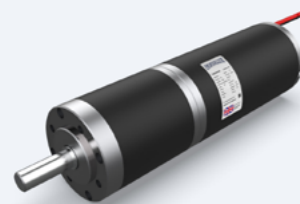


PBL70-GB12		
1 Voltage	<b>V</b>	48
2 Output speed	<b>rpm</b>	67 - 267
3 Power	<b>W</b>	231.9
4 Continuous torque	<b>Nm</b>	7.0 - 20.0
5 Intermittent torque	<b>Nm</b>	12.0 - 32.0

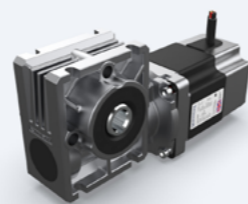


## Sorting machines

Through use of conveyor belts, in-line weighing, dimensioning and label application technology, sorting systems sort packages, parcels and letters of all shapes and sizes into specified locations, ready for distribution. The reliability of Parvalux drive systems makes them perfect for use in any 24/7 operation.



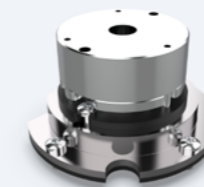
BRx42-PGH42		
1 Voltage	<b>V</b>	12 - 48
2 Output speed	<b>rpm</b>	2 - 200
3 Power	<b>W</b>	20.1
4 Continuous torque	<b>Nm</b>	0.7 - 14.0
5 Intermittent torque	<b>Nm</b>	1.1 - 21.0



BLx60-GB28		
1 Voltage	<b>V</b>	12 - 48
2 Output speed	<b>rpm</b>	50 - 200
3 Power	<b>W</b>	110.4
4 Continuous torque	<b>Nm</b>	3.9 - 11.0
5 Intermittent torque	<b>Nm</b>	6.8 - 22.0

## Accessories

### Brakes



Technical data		
1 Torque	<b>lb-in</b>	2.0
2 Voltage	<b>V</b>	24
3 Resistance (at 20 °C)	<b>Ω</b>	71.5

### Encoders



Technical data		
1 Power supply	<b>VDD</b>	3.6 - 5.5
2 Output current	<b>mA</b>	2
3 Channels		2
4 Quadrature resolutions	<b>PPR</b>	48 - 2048
5 Accuracy	<b>°</b>	0.25

### Controllers



Technical data		
1 Nominal supply power voltage +V <sub>cc</sub>	<b>V</b>	12 - 50
2 Absolute supply voltage +V <sub>min</sub> / +V <sub>max</sub>	<b>V</b>	10 - 56
3 Output voltage (max)	<b>V</b>	0.98 x +V <sub>cc</sub>
4 Output current I <sub>cont</sub> / I <sub>max</sub>	<b>A</b>	15 / 30
5 Pulse width modulation frequency	<b>kHz</b>	53.6



## Materials handling solutions

The modern warehouse sector has embraced motorized automated material handling equipment to support employee safety and drive efficiency. Parvalux has significant experience supporting some of the largest and most innovative intralogistics equipment manufacturers.

Since the start of the pandemic, there has been significant growth in online shopping, most of this being fulfilled via large, complex warehousing and distribution hub facilities. Parvalux was able to react quickly with standard and custom gear motor designs for conveyor belt systems, picking systems, parcel sorting equipment, pallet shuttles and automated storage and retrieval systems (ASRS).

An effective, reliable and efficient drive system is essential to any material handling equipment, whether it's a motor-assisted tow truck, a barrel lifter, a robotic vehicle or a complete high-capacity parcel sorting hub; Parvalux designs and manufactures an extensive range of AC, DC brushless and brushed motors and our drives are known for their performance and reliability.

Sold & Serviced By:



Toll Free Phone (877) SERV098

Toll Free Fax (877) SERV099

[www.electromate.com](http://www.electromate.com)

[sales@electromate.com](mailto:sales@electromate.com)

