

Configuration & Tuning Software

GalilSuite

Product Description

GalilSuite is the newest software for Galil's RIO PLC's and motion controllers. GalilSuite replaces GalilTools and the WSDK Tuning software with powerful software tools for Galil controllers. An improved user-interface, enhanced servo tuning capabilities with multiple tuning methods, real-time scopes, multiple device management and simplified communications utilities are just a fraction of the feature set provided by GalilSuite.

A new, comprehensive GUI with a tool-bar presentation provides an easy way to manage your complete system. It uses tabs to organize multiple connections, and allows all of GalilSuite's tools to act as a seamless single-application that is easy to manage and maintain.

The new Scope Tool is ideal for system analysis as it captures numerous types of data for each axis in real-time. Multiple controllers and multiple channels of data can be displayed at once permitting all vital data to be graphed and analyzed during a single data capture sequence. A powerful trigger feature allows for the precise capture of data.

GalilSuite's Tuner Tool now provides four methods for tuning, with a graphical view of multiple tuning responses. A customizable Watch Tool simplifies debug-

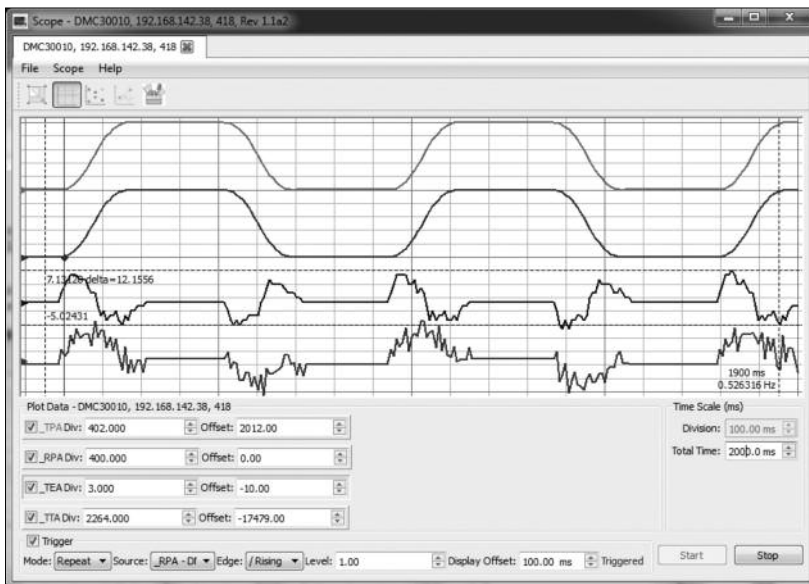
ging through a single view showing data-records, variables and arrays of any controller on the system.

GalilSuite runs on Microsoft Windows XP Service Pack 3, Windows 7 and Windows 8 as standard, with other platforms available on request. Support for Linux is expected in Q1 2013, and Q2 2013 for Mac.

GalilSuite-Lite is available at no charge and contains all Tools except the Scope Tool and Tuner Tool. A software license is required to use the complete GalilSuite tool set.

Features

- *Launcher Tool with the ability to create custom profiles to manage controller connections*
- *Terminal Tool for sending and receiving Galil commands*
- *Editor Tool to easily create and work on multiple Galil programs simultaneously*
- *Viewer Tool to see a complete status of all controllers on a single screen*
- *Scope Tool for viewing and manipulating data for multiple controllers real-time*
- *Watch Tool for simplified debugging of any controller on the system and a display of I/O and motion status*
- *Tuner Tool with up to four methods for automatic and manual PID tuning of servo systems*
- *Configuration Tool for modifying controller settings, backup/restore and firmware download*



GalilSuite provides multiple tools for easy set-up and tuning of motion systems. This picture shows the multichannel Scope tool capturing the actual position, command position, position error and motor torque.

Sold & Serviced By:

 **ELECTROMATE**

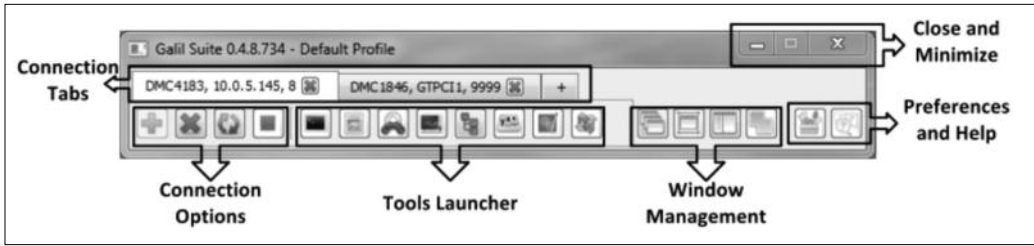
Toll Free Phone (877) SERV098

Toll Free Fax (877) SERV099

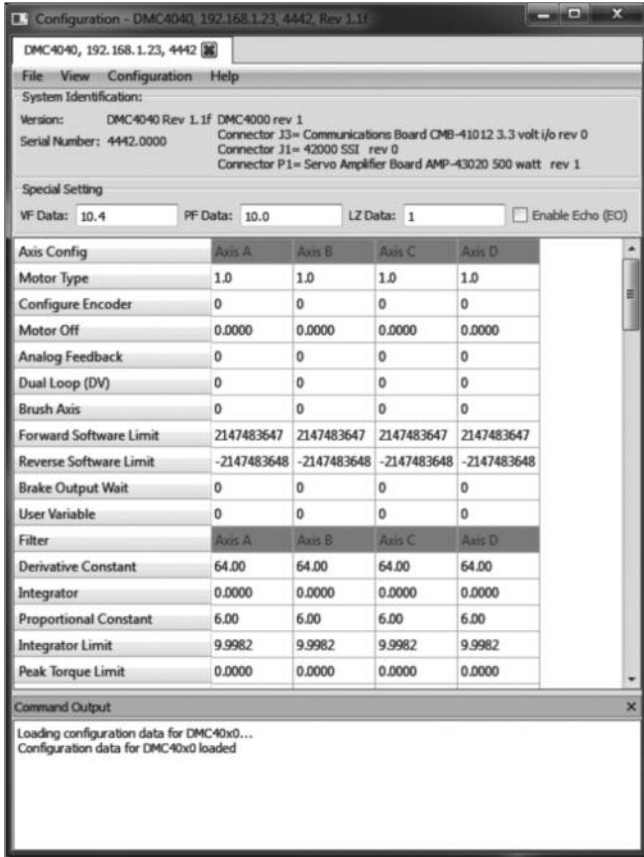
www.electromate.com

sales@electromate.com

GalilSuite

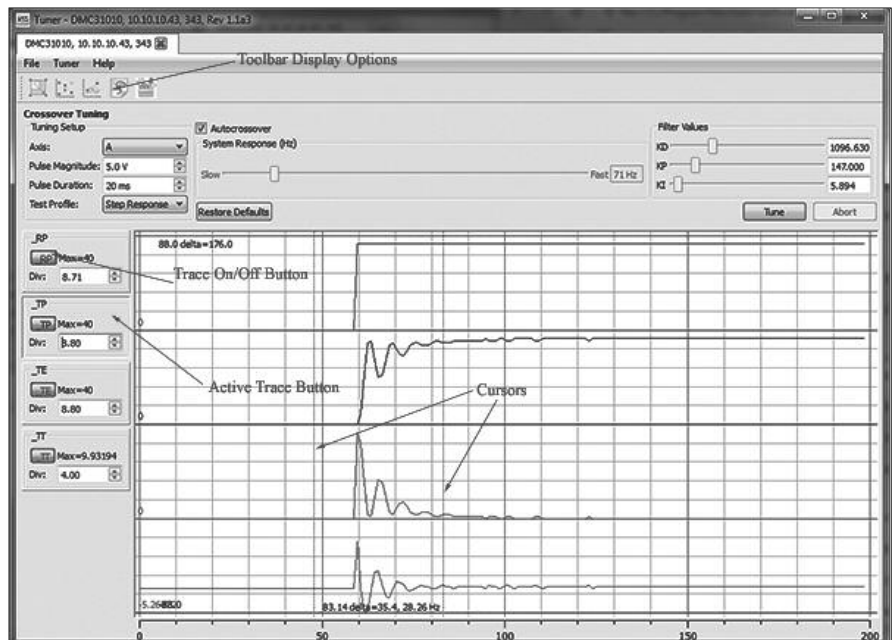


Launcher tool bar allows easy management of controller connections and display of the other GalilSuite tools.



Configuration tool allows various controller parameters to be defined.

Tuner tool provides four methods for automatic and PID tuning of servo-systems.



SOFTWARE

Sold & Serviced By:

ELECTROMATE

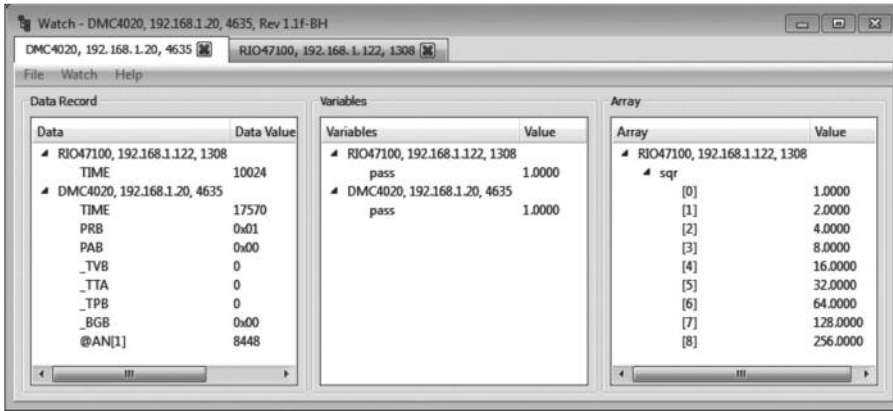
Toll Free Phone (877) SERV098

Toll Free Fax (877) SERV099

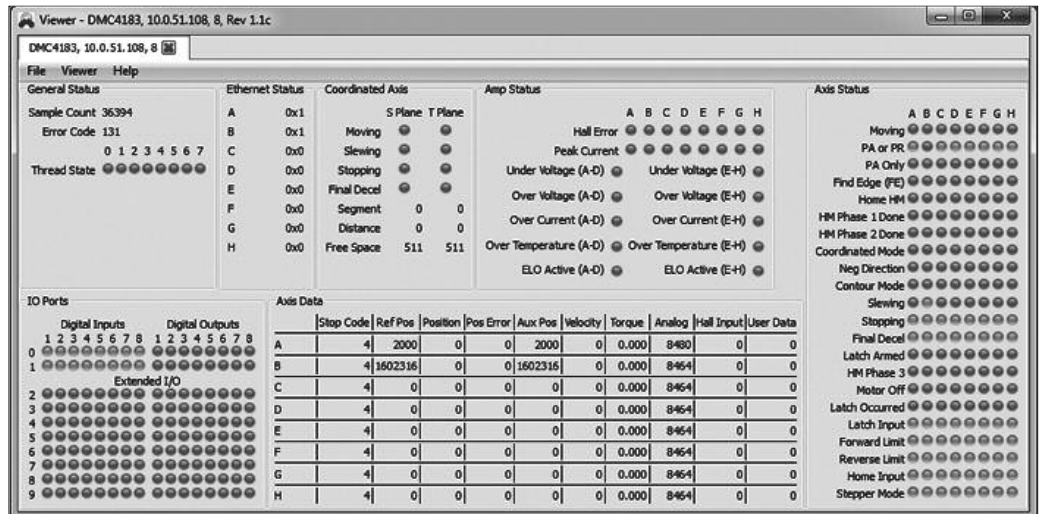
www.electromate.com

sales@electromate.com

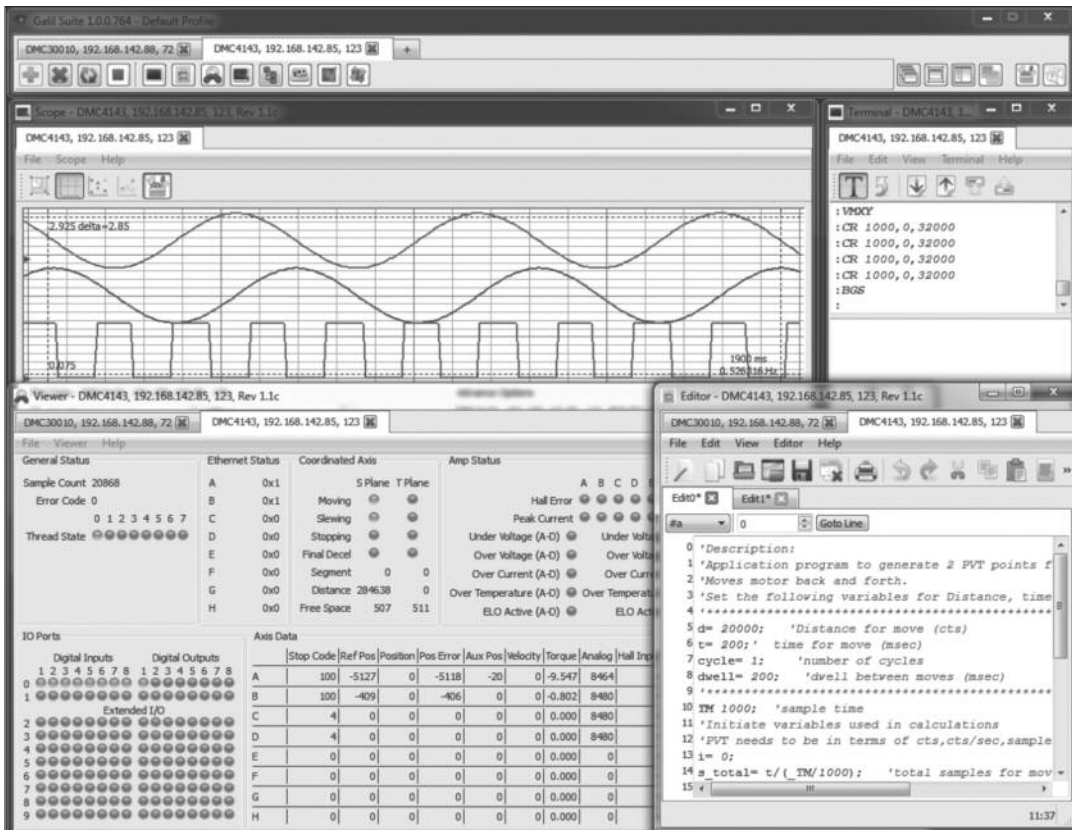
GalilSuite



Watch tool displays the I/O and motion status in tabular format of all devices in the system.



Viewer tool provides a graphical display of controller I/O and status.



GalilSuite allows multiple tools to be displayed and used simultaneously tool displays the I/O and motion status in tabular format of all devices in the system.

Sold & Serviced By:
ELECTROMATE

Toll Free Phone (877) SERV098
 Toll Free Fax (877) SERV099
www.electromate.com
sales@electromate.com

SOFTWARE