

# CORVINA CLOUD



# EXOR

Sold & Serviced By:



Canadian and International Sales

**ELECTROMATE**

877-737-8698

[sales@electromate.com](mailto:sales@electromate.com)

[www.electromate.com](http://www.electromate.com)

U.S. Sales

**SERVO2GO.com**

877-378-0240

[sales@servo2go.com](mailto:sales@servo2go.com)

[www.servo2go.com](http://www.servo2go.com)

# Corvina Cloud 1.0

## Key Features for Industrial Remote Access



### No Hidden Costs

- All EXOR HMIs come equipped with a Corvina VPN Client included at no extra cost
- Enterprise level account management that includes many suborganizations that are configurable



### Scalability

- A simple web based interface allows extreme scalability
- Worldwide server installations continuing to offer you global coverage
- Addition of more users and hardware to your Corvina Cloud account



### IT Approved

- Outbound connection built on Open VPN that utilizes ports 1194 "UDP & 443 TCP (HTTPS)"
- Corvina utilizes open SSL & TLS encryption for secure access along with SL3 security level standards to protect against outside threats



### Security Incorporated

- Restricted access based on user, group, site for all or single devices
- End to end encrypted sessions using algorithms that are part of the SSL/TLS Protocol Cipher Suite
- SOC1, SC02/SSAE 16 and ISO 27002:2005 certified



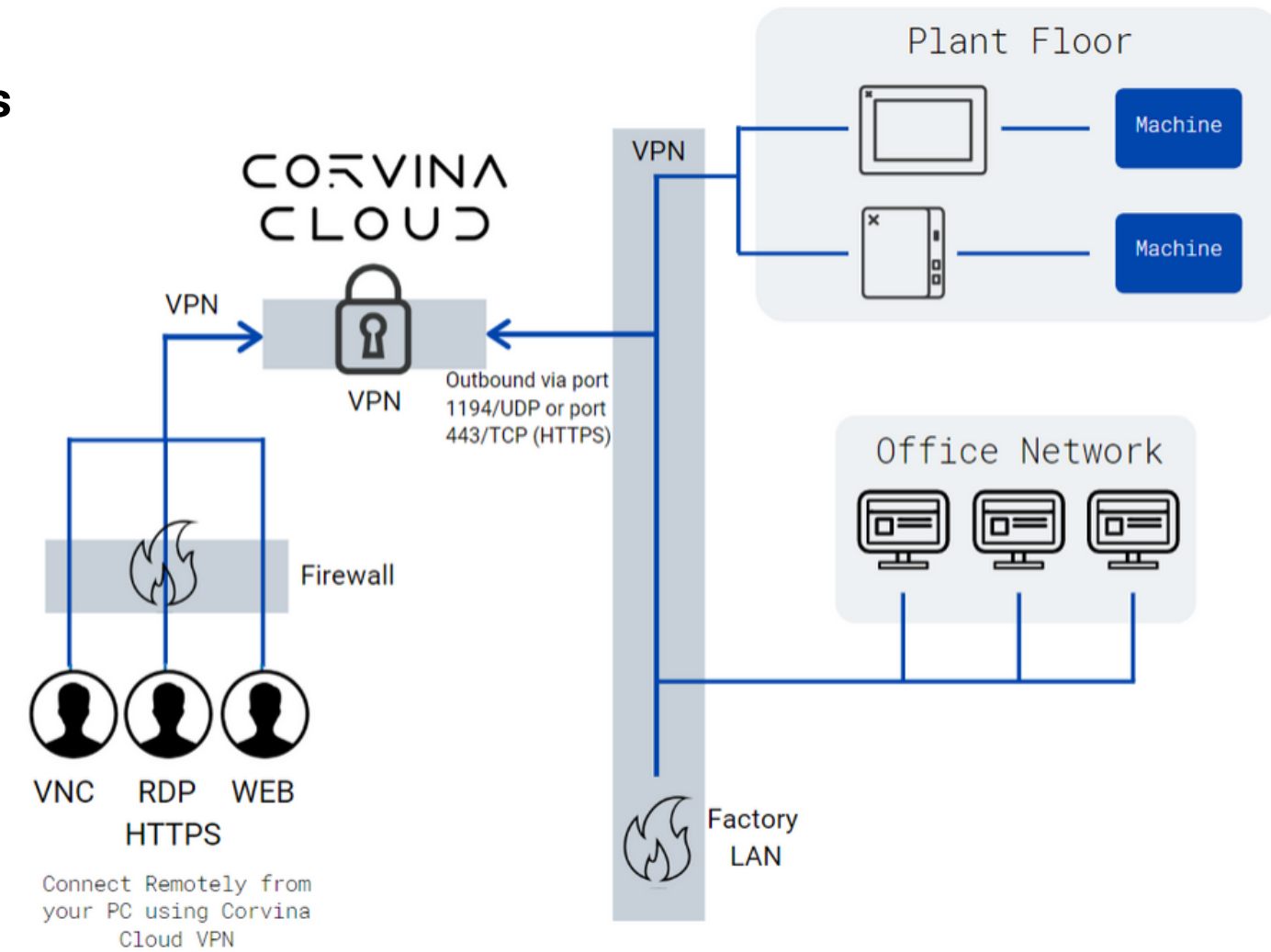
### Layered Security

EXOR's approach to security is based on the international guidelines set out in:

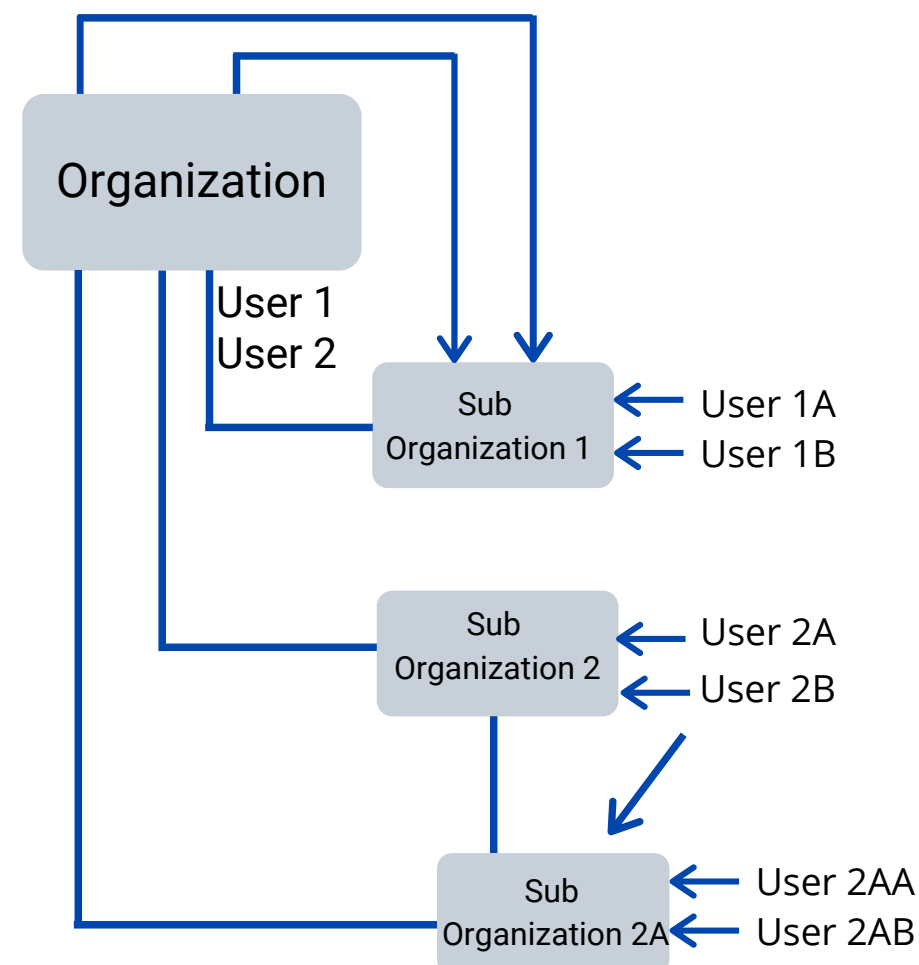
- ISO27002
- IEC 62443-2-4
- NIST Cyber Security
- Framework 1.0

Akin to the nascent industry standard, EXOR has multiple layers of security that allow as much as possible for our clients to be protected. At the same time, clients can also go about their business. The security has to be present and robust, but not impede operational needs. This is the delicate balancing point which we work with each of our clients to achieve.

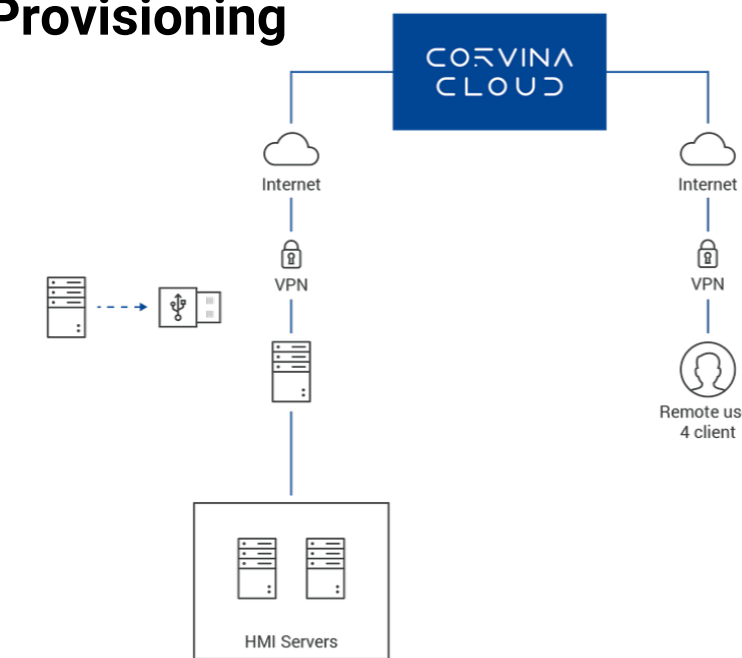
## Remote Access



## Organization








## USB Provisioning



## Multi Plug Protocol and Play Use



|  | eX700 Series   | JSmart Series   | eXware   | eSMART Series  |
|--|--|---|--|--|
|  |   |    |    |   |
| <b>EXOR Products Compatible with Corvina Cloud 1.0</b>                           | eX705<br>eX707<br>eX710<br>eX715<br>eX721<br>*Other dedicated eX700 solutions  | JSmart707<br>JSmart710<br>JSmart715<br>JSmart721  | eXware 703<br>eXware 707<br>eXware 707Q  | eSMART107  |
| <b>WAN Connectivity</b>  | LAN & LTE  | WiFi 802.11 b/g/n   | LAN & LTE  | LAN  |
| <b>Ethernet</b>  | Port 0 - 10/100/1000<br>Port 1 & 2 - 10/100  | 10/100 PoE  | 10/100<br>*707Q Port 0 - 10/100/1000<br>Port 1&2 - 10/100  | Port 0 & 1 - 10/100  |
| <b>USB</b>   | Yes  | Only with Cable   | Yes  | Yes  |
| <b>SD Card</b>   | Yes  | No  | Yes  | No   |
| <b>Serial Port</b>   | Yes  | No  | Yes  | Yes  |
| <b>Temperature Range</b>   | -20° to +60 °C (vertical installation) Plug-in modules and USB devices may limit max temperature to +50 °C   | -20° to +55° C (vertical installation)  | -20°C to +60°C Plug-in modules and USB devices may limit max temperature to +50 °C.  | 0 to 50 °C (vertical installation)   |
| <b>Protection Class</b>  | IP66 (front), IP20 (rear)  | IP67 (requires appropriate accessories and cables)  | IP20   | IP66 (front); IP20 (rear)  |
| <b>Approval</b>  | CE: Emission EN 61000-6-4, Immunity EN 61000-6-2 for installation in industrial environments<br>UL: cULus: UL61010-1 / UL61010-2-201<br>UL: cULus: Class 1 Div 2<br>IECEX: Zone 2/22: Ex nA IIC T5 Gc, Ex tc IIIC T95°C Dc<br>ATEX: Zone 2/22: II 3 G Ex nA IIC T5 Gc, II 3 D Ex tc IIIC T95°C Dc<br>DNV-GL: Yes<br>LR: Yes<br>EU RO MR: Yes<br>RCM: Yes | CE: Emission EN 61000-6-4, Immunity EN 61000-6-2 for installation in industrial environment<br>UL: cULus: UL61010-1 / UL61010-2-201 | CE: Emission EN 61000-6-4 Immunity EN 61000-6-2 for installation in industrial environments Emission EN 61000-6-3, Immunity EN 61000-6-1 for installation in residential environments EN 60945, EMC Emissions and Immunity for marine applications<br>UL: cULus: UL61010-1 / UL61010-2-201v<br>UL: cULus: Class 1 Div 2<br>IECEX: Zone 2: Ex nA IIC T5 Gc / -20°C ≤ Tamb ≤ +60°C. Limited to 0°C ≤ Tamb ≤ +50°C with PLIO03<br>ATEX: Zone 2: II 3 G Ex nA IIC T5 Gc / -20°C ≤ Tamb ≤ +60°C. Limited to 0°C ≤ Tamb ≤ +50°C with PLIO03<br>DNV-GL: Yes<br>RCM: Yes | CE: Emission EN 61000-6-4, Immunity EN 61000-6-2 for installation on in industrial environments<br>CE: Emission EN 61000-6-3, Immunity EN 61000-6-1 for installation in residential environments<br>DNV-GL: Yes<br>EU RO MR: Yes |
| <b>Warranty</b>  | 5 years  | 2 years   | 5 years  | 2 years  |